

# LEASE

**1022 TWELVE OAKS DR.**

1022 Twelve Oaks Dr. Watkinsville, GA 30677



## PROPERTY DESCRIPTION

Available are 3 separate office spaces totaling 3,561 SF. Suite 101 on the main floor is 1650 SF of rentable space and on the second floor there is one available executive office, Suite 202 as well as Suite 201 which is 1,650 SF of rentable space. These units can be leased separately or can be combined for tenant use. The rental rate of Suite 202 includes taxes, insurance, common area maintenance as well as power and water.

The building is a two-story brick building with an open foyer upon entry. Each level has a restroom within the common space in addition to the ones within the suites. There is a well-maintained courtyard at the rear of the building, and the second level has a large, shared deck overlooking the grounds.

## LOCATION DESCRIPTION

Superb Oconee County location on the corner of Hog Mountain Rd. and Twelve Oaks Dr. between Presbyterian Village, Highway 441, and the Butler's Crossing Shopping Center. A very distinctive and attractive office with the rear overlooking UGA's Horticulture pasturelands.

## OFFERING SUMMARY

Lease Rate:	\$16.00 - 34.48 SF/yr (NNN; MG)
Available SF:	261 - 1,650 SF
Lot Size:	0.85 Acres
Building Size:	5,476 SF

SPACES	LEASE RATE	SPACE SIZE
Suite 101	\$17.00 SF/yr	1,650 SF
Suite 201	\$16.00 SF/yr	1,650 SF
Suite 202	\$750 per month	261 SF

**Roby Redwine**  
(706) 207-2942

**Katie Reeves**  
(706) 254-3446

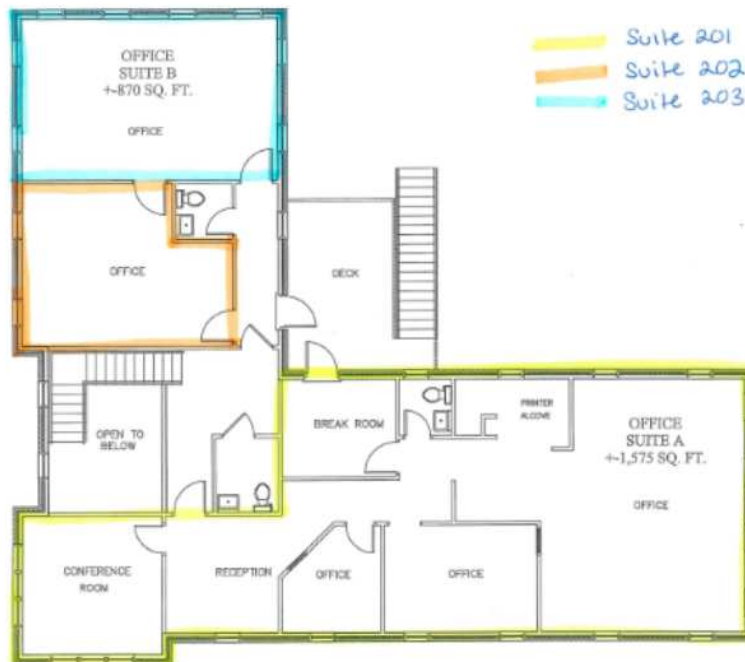
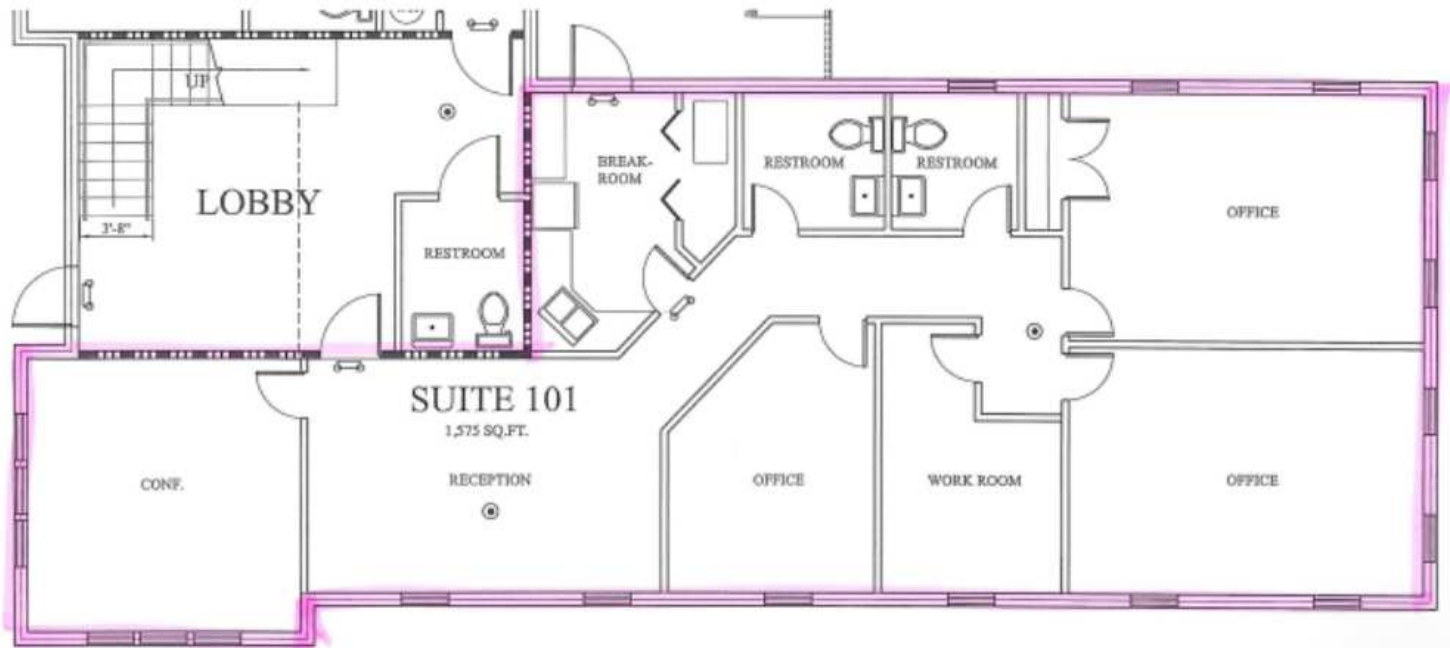


**COLDWELL BANKER  
COMMERCIAL**  
UPCHURCH REALTY

# LEASE

## FLOOR PLANS

1022 Twelve Oaks Dr. Watkinsville, GA 30677



**Roby Redwine**  
(706) 207-2942

**Katie Reeves**  
(706) 254-3446

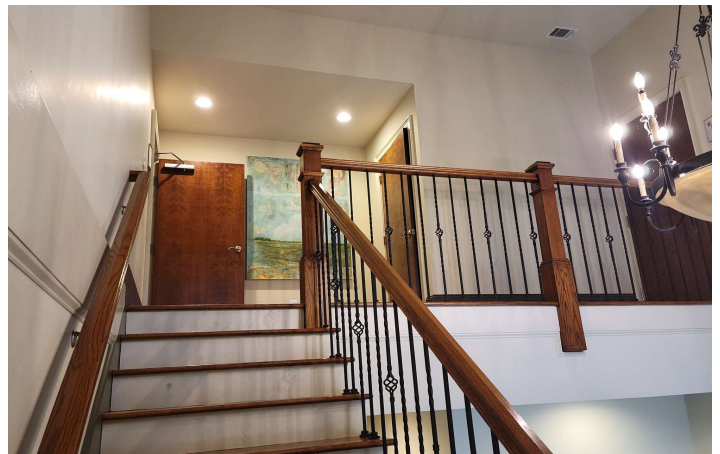
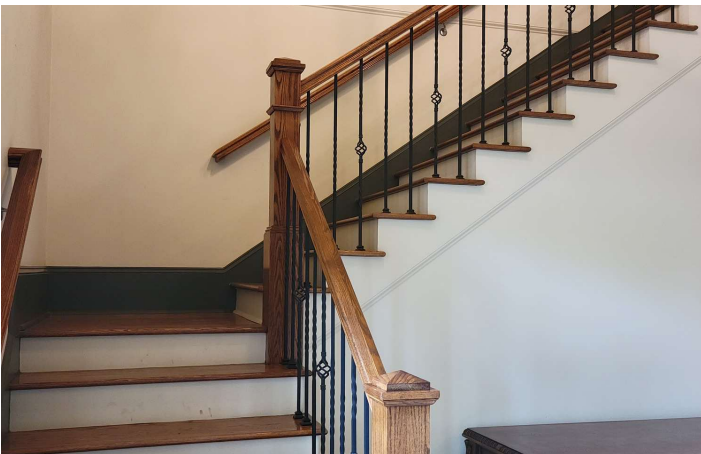


**COLDWELL BANKER  
COMMERCIAL**  
UPCHURCH REALTY



# LEASE

**1022 TWELVE OAKS DR.**  
1022 Twelve Oaks Dr. Watkinsville, GA 30677



**Roby Redwine**  
(706) 207-2942

**Katie Reeves**  
(706) 254-3446

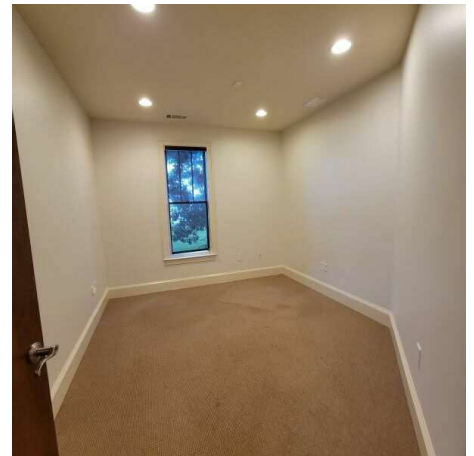
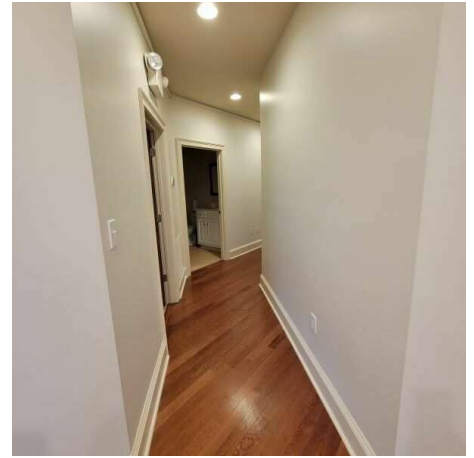


**COLDWELL BANKER  
COMMERCIAL**  
UPCHURCH REALTY

# LEASE

**SUITE 101**

1022 Twelve Oaks Dr. Watkinsville, GA 30677



**Roby Redwine**  
(706) 207-2942

**Katie Reeves**  
(706) 254-3446



**COLDWELL BANKER  
COMMERCIAL**  
UPCHURCH REALTY



# LEASE

**SUITE 201**

1022 Twelve Oaks Dr. Watkinsville, GA 30677



**Roby Redwine**  
(706) 207-2942

**Katie Reeves**  
(706) 254-3446



**COLDWELL BANKER  
COMMERCIAL**  
UPCHURCH REALTY

# LEASE

## SUITES 202 AND 203

1022 Twelve Oaks Dr. Watkinsville, GA 30677



**Roby Redwine**  
(706) 207-2942

**Katie Reeves**  
(706) 254-3446

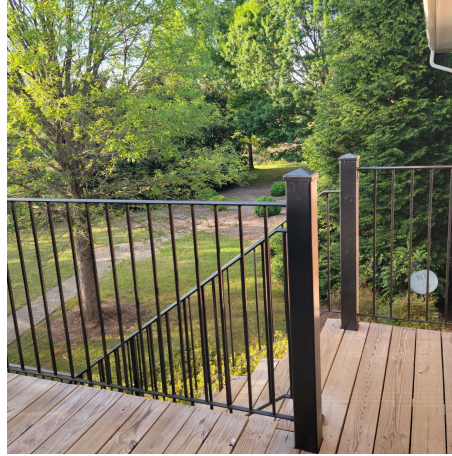


**COLDWELL BANKER  
COMMERCIAL**  
UPCHURCH REALTY



# LEASE

**1022 TWELVE OAKS DR.**  
1022 Twelve Oaks Dr. Watkinsville, GA 30677



**Roby Redwine**  
(706) 207-2942

**Katie Reeves**  
(706) 254-3446

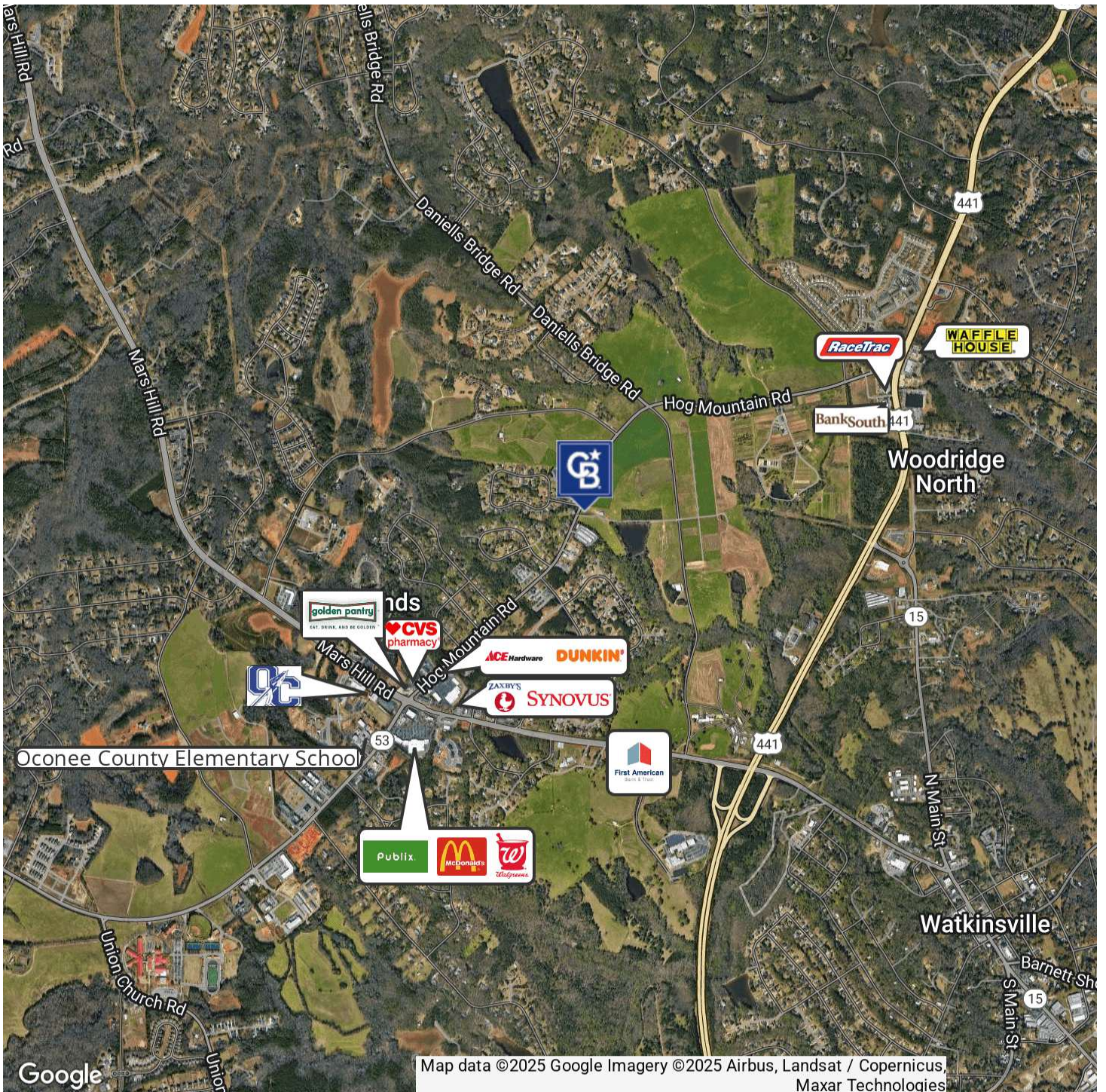


**COLDWELL BANKER  
COMMERCIAL**  
UPCHURCH REALTY



# LEASE

1022 TWELVE OAKS DR.  
1022 Twelve Oaks Dr. Watkinsville, GA 30677



**Roby Redwine**  
(706) 207-2942

**Katie Reeves**  
(706) 254-3446

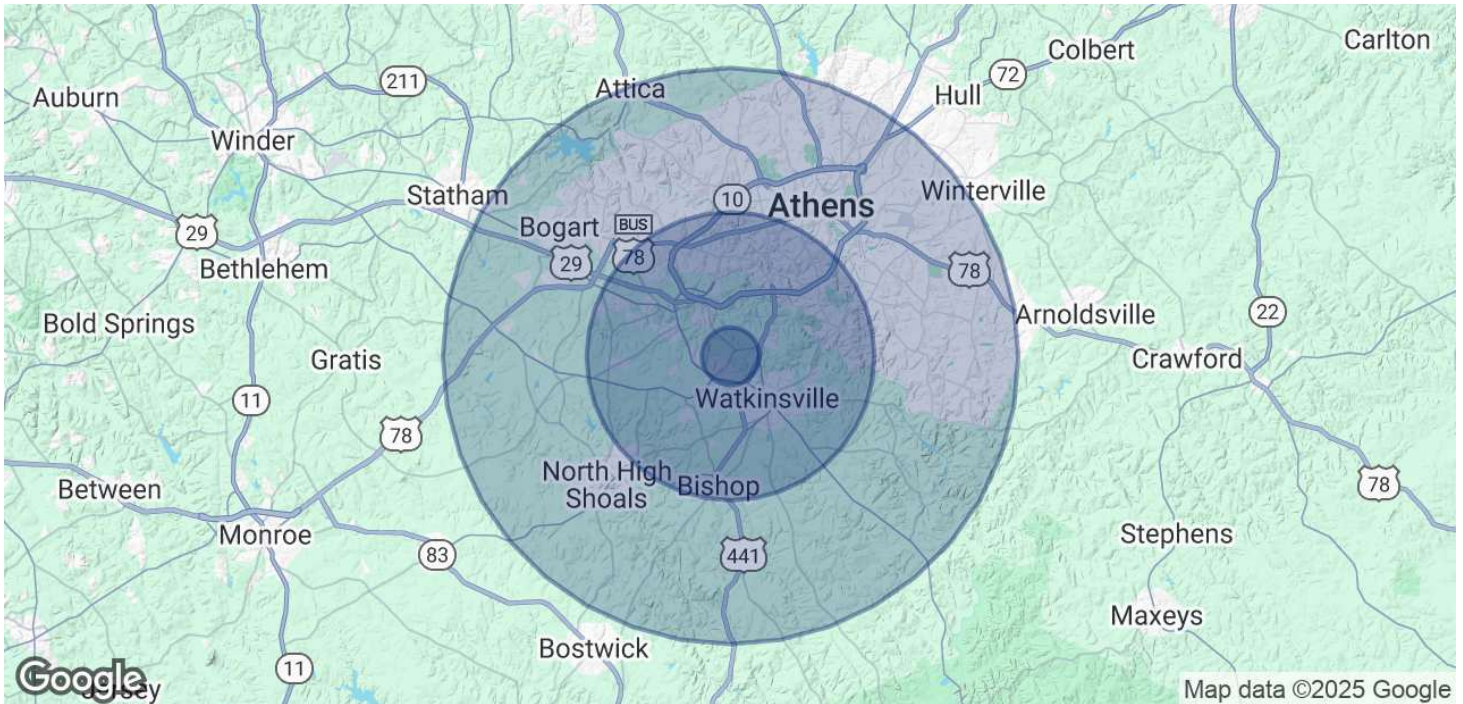


**COLDWELL BANKER  
COMMERCIAL**  
UPCHURCH REALTY



# LEASE

**1022 TWELVE OAKS DR.**  
1022 Twelve Oaks Dr. Watkinsville, GA 30677



POPULATION	1 MILE	5 MILES	10 MILES
Total Population	1,872	54,949	161,842
Average Age	35.8	35.9	34.4
Average Age (Male)	27.2	34.2	33.3
Average Age (Female)	42.7	39.1	35.9

HOUSEHOLDS & INCOME	1 MILE	5 MILES	10 MILES
Total Households	662	23,422	66,409
# of Persons per HH	2.8	2.3	2.4
Average HH Income	\$95,266	\$94,038	\$74,246
Average House Value	\$298,827	\$273,528	\$211,163

2020 American Community Survey (ACS)

**Roby Redwine**  
(706) 207-2942

**Katie Reeves**  
(706) 254-3446



**COLDWELL BANKER  
COMMERCIAL**  
UPCHURCH REALTY