

retail FOR LEASE

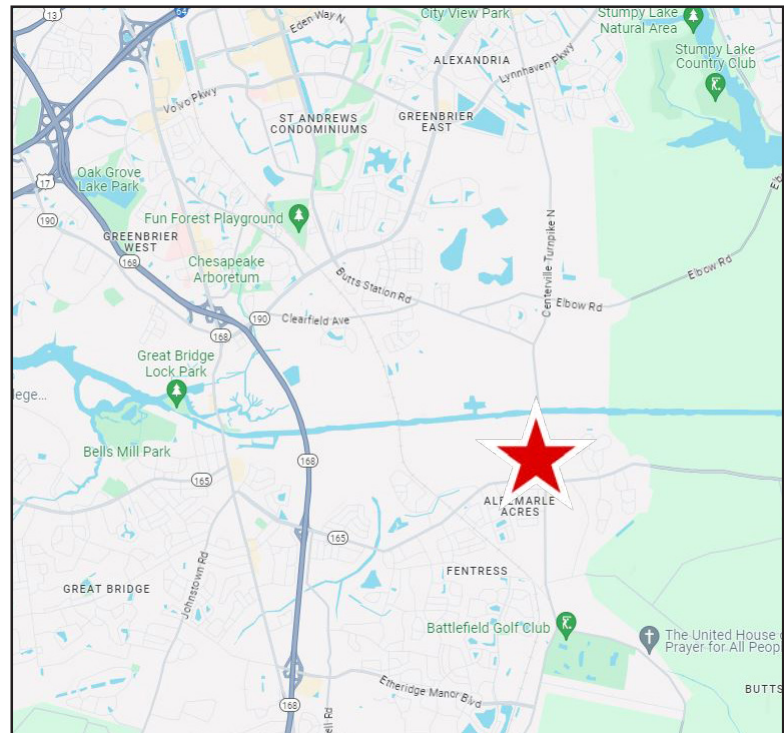


Retail Building (former Rite Aid) | 1458 Mount Pleasant Road, Chesapeake, Virginia

PROPERTY FEATURES:

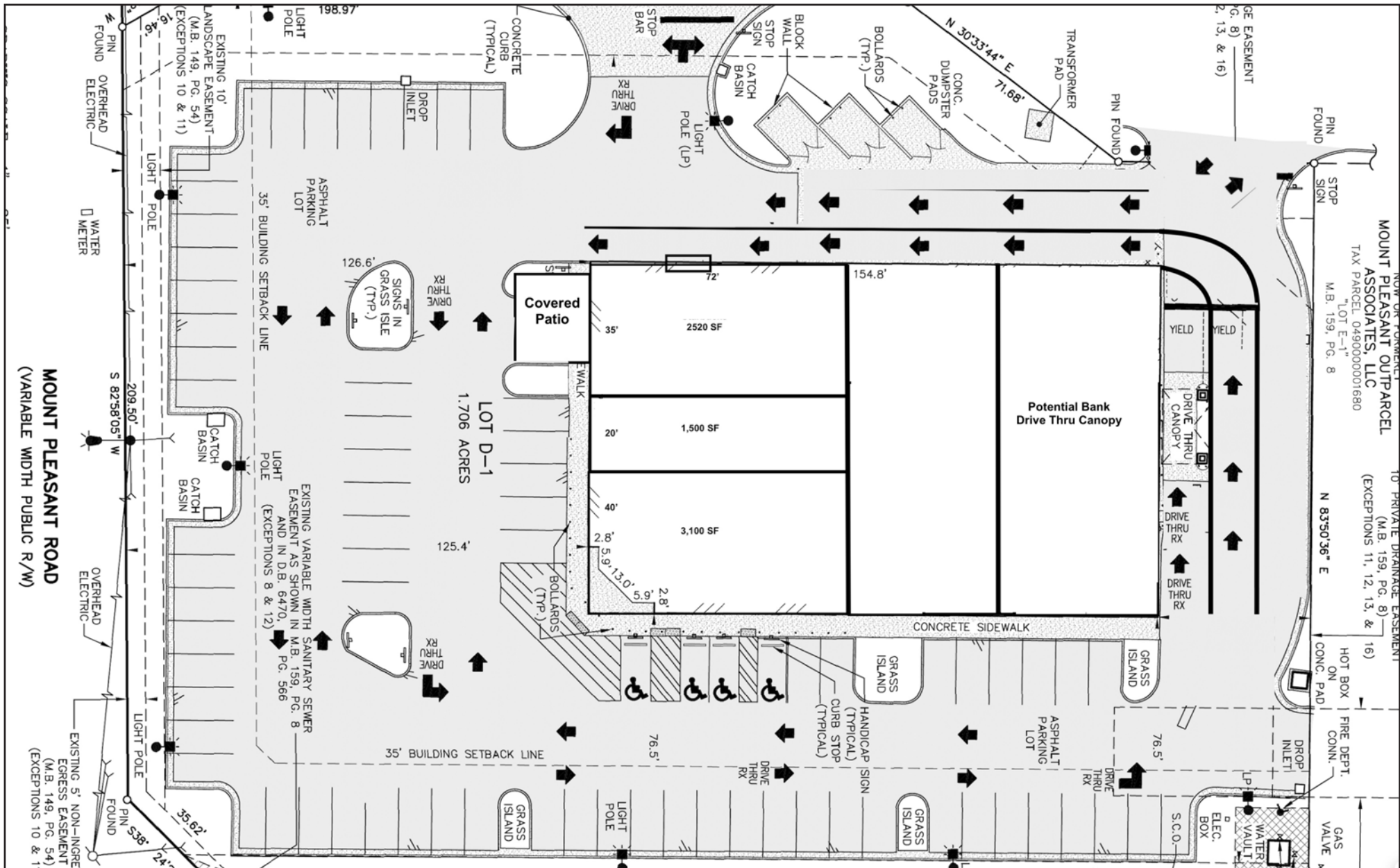
- **±1,500 - 14,618 SF available!** Brand new shopping center (former Rite Aid) located at a fully signalized intersection at Mount Pleasant Road & Centerville Turnpike.
- **One (1) endcap drive-thru available** and one (1) endcap banking drive-thru or pick-up window available.
- **Located in front of Mt. Pleasant Marketplace**, which contains Kroger, Wendy's, Taco Bell & more; Food Lion center across the street!
- **Monument signage with excellent visibility;** over 16K VPD along Mount Pleasant Road & 14K VPD on Centerville Turnpike.
- **Strong Population, Avg HH Income & Households** within a 5 mile radius!

DEMOGRAPHICS	1 MILE	3 MILES	5 MILES
Est. Population	5,033	32,374	116,786
Avg HH Income	\$177,235	\$166,703	\$146,688
Households	1,699	11,534	42,987



Troy Parker
o: 757.222.0111 x204
m: 757.407.9499
troy@parkerburnell.com

SITE PLAN



RENDERINGS



AERIAL

