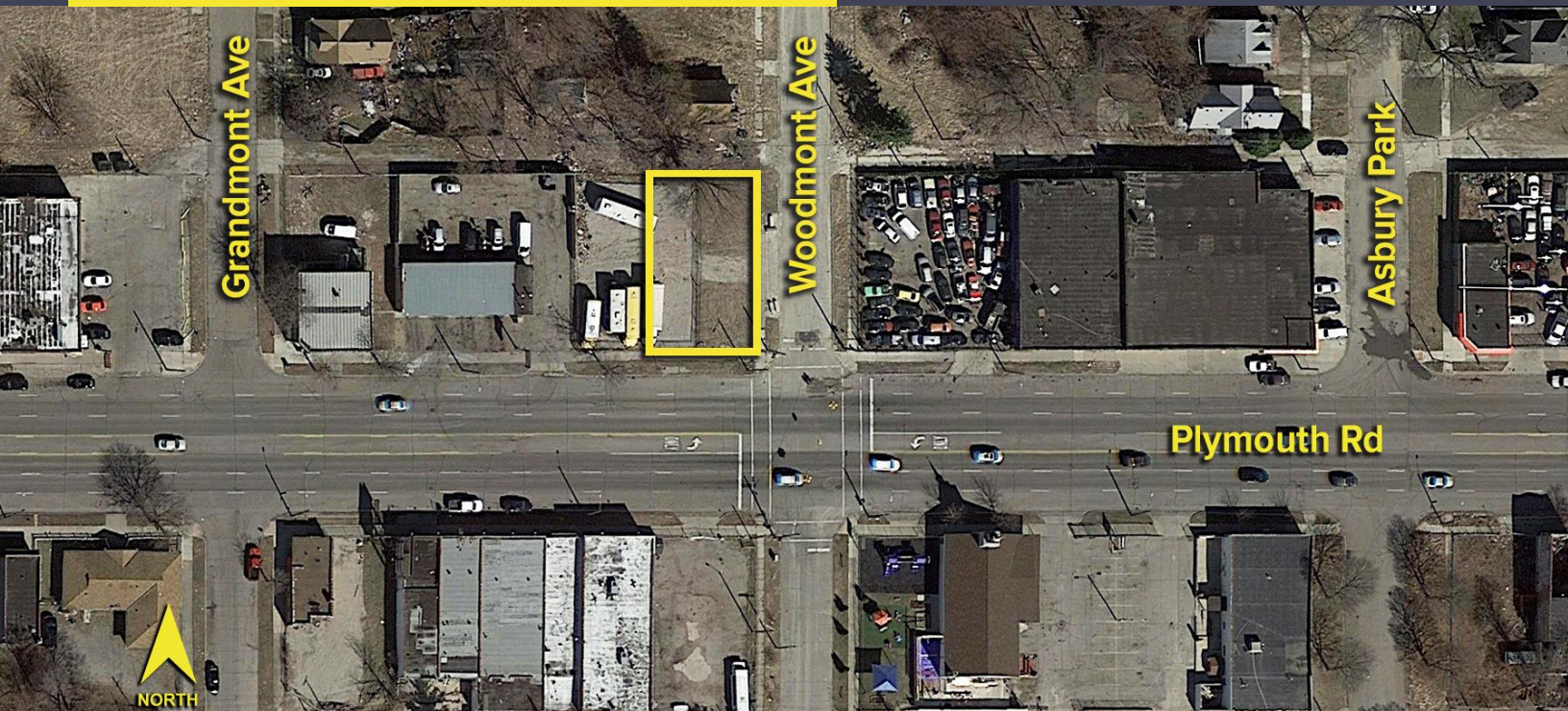


16500 PLYMOUTH ROAD  
DETROIT, MICHIGAN

LAND FOR SALE  
0.15 Acre Available



**SIGNATURE  
ASSOCIATES**  
KNOW SIGNATURE | KNOW RESULTS



## PROPERTY FEATURES

- 0.15 acre available
- Two lots included: 16500 Plymouth Road and 16510 Plymouth Road
- Zoned B4
- Water and gas utilities on site
- Outside storage available
- Asking Price: \$89,000.00



For more information, please contact:

**JOE STACK**  
(248) 359 0615  
jstack@signatureassociates.com

**CHRIS MONSOUR**  
(248) 948 0107  
cmonsour@signatureassociates.com

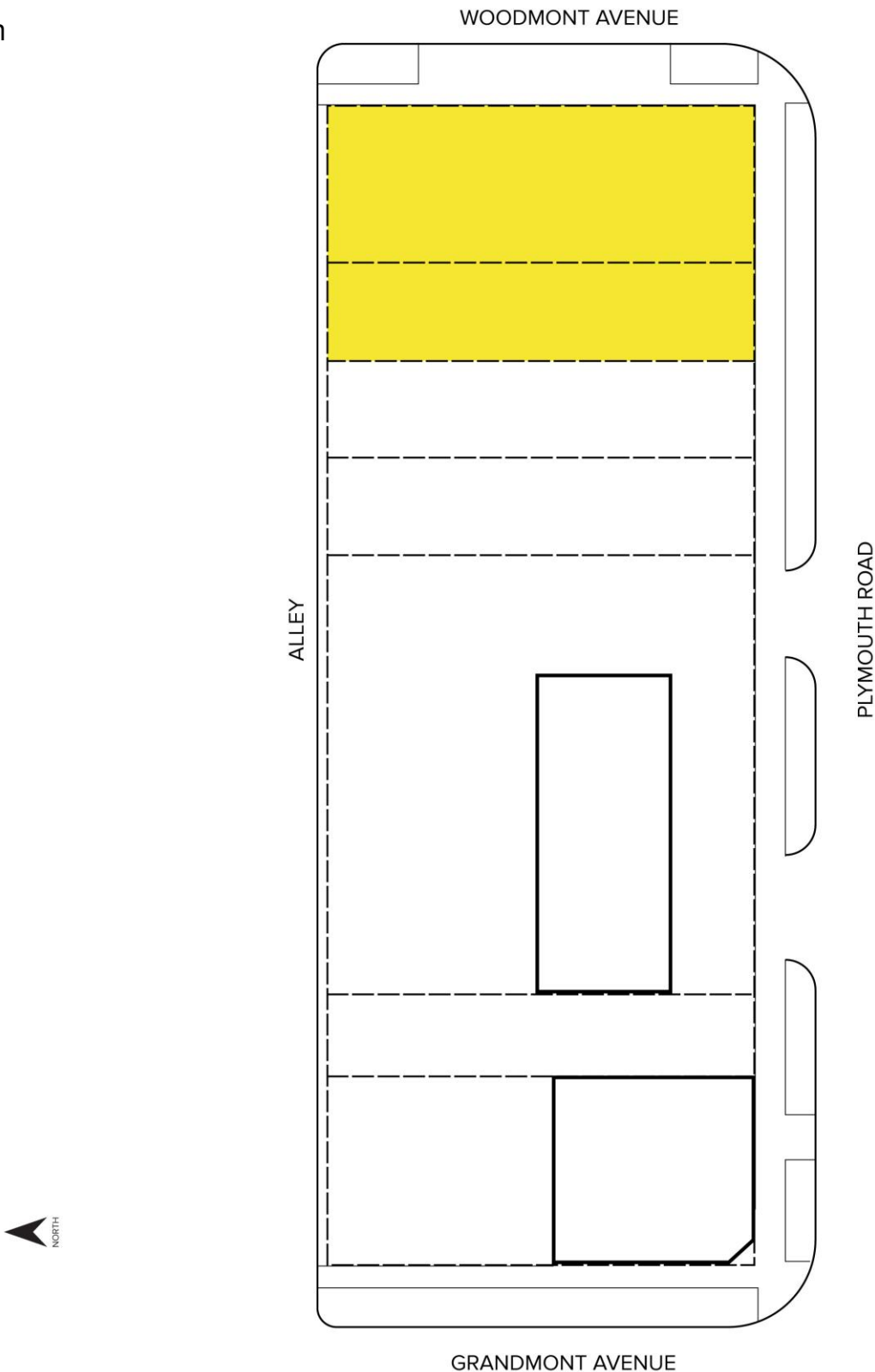
**SIGNATURE ASSOCIATES**  
One Towne Square, Suite 1200  
Southfield, MI 48076  
www.signatureassociates.com

Information is subject to verification and no liability for errors or omissions is assumed. Price is subject to change and listing withdrawal.

16500 Plymouth Road – Detroit, Michigan  
Land For Sale

.15  
Acre  
AVAILABLE

Site Plan



For more information, please contact:

**JOE STACK**  
(248) 359 0615  
jstack@signatureassociates.com

**CHRIS MONSOUR**  
(248) 948 0107  
cmonsour@signatureassociates.com

**SIGNATURE ASSOCIATES**  
One Towne Square, Suite 1200  
Southfield, MI 48076  
www.signatureassociates.com

Information is subject to verification and no liability for errors or omissions is assumed. Price is subject to change and listing withdrawal.