



## 6639 Centurion Dr

Lansing, Michigan 48917

### Property Highlights

- Suite 140 - 1,672 SF
- Suite 150 - 1,535 SF
- Suite 200 - 1,573 SF - LEASED
- Impressive entry and landscaping
- Ample parking
- Located at the I-496 & Creyts Rd interchange

### Offering Summary

Lease Rate:	\$16.00 SF/yr (MG)
Building Size:	15,779 SF
Available SF:	1,535 - 1,672 SF
Lot Size:	1.56 Acres

### For More Information



#### Steve Slater

Associate Broker

O: 517 487 9222 | C: 517 749 7914

steveslater@naimidmichigan.com

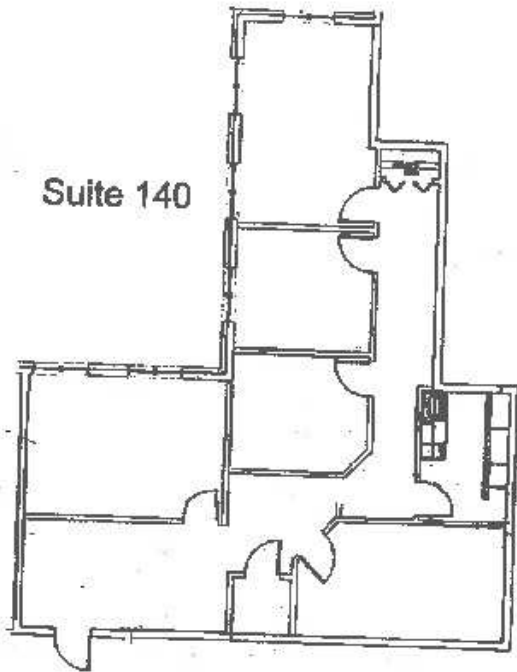




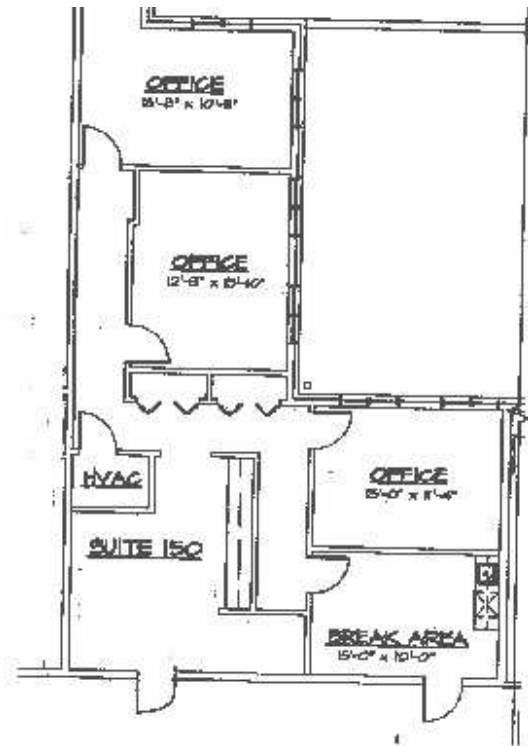
South Facing Aerial



East Facing Aerial

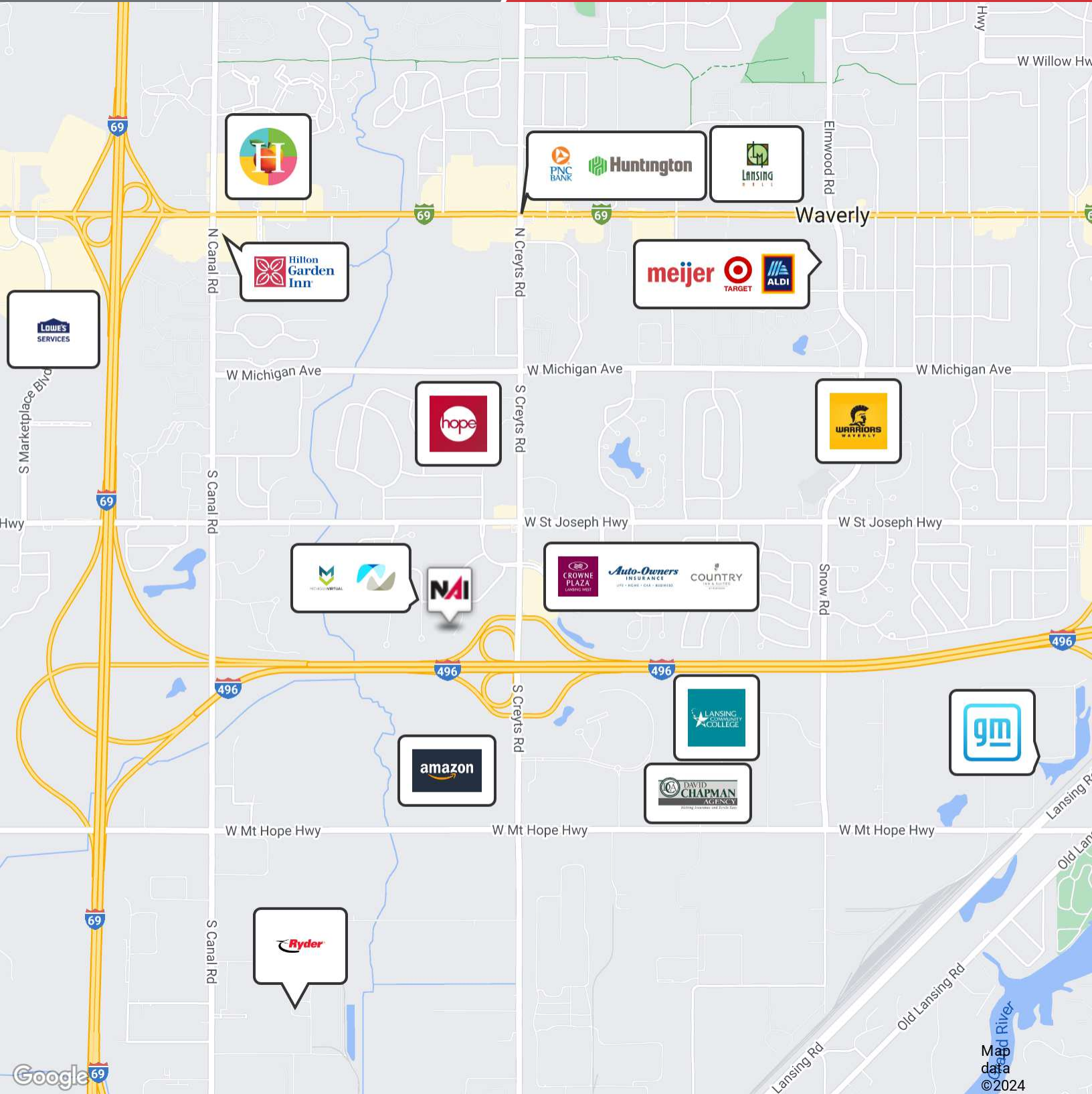


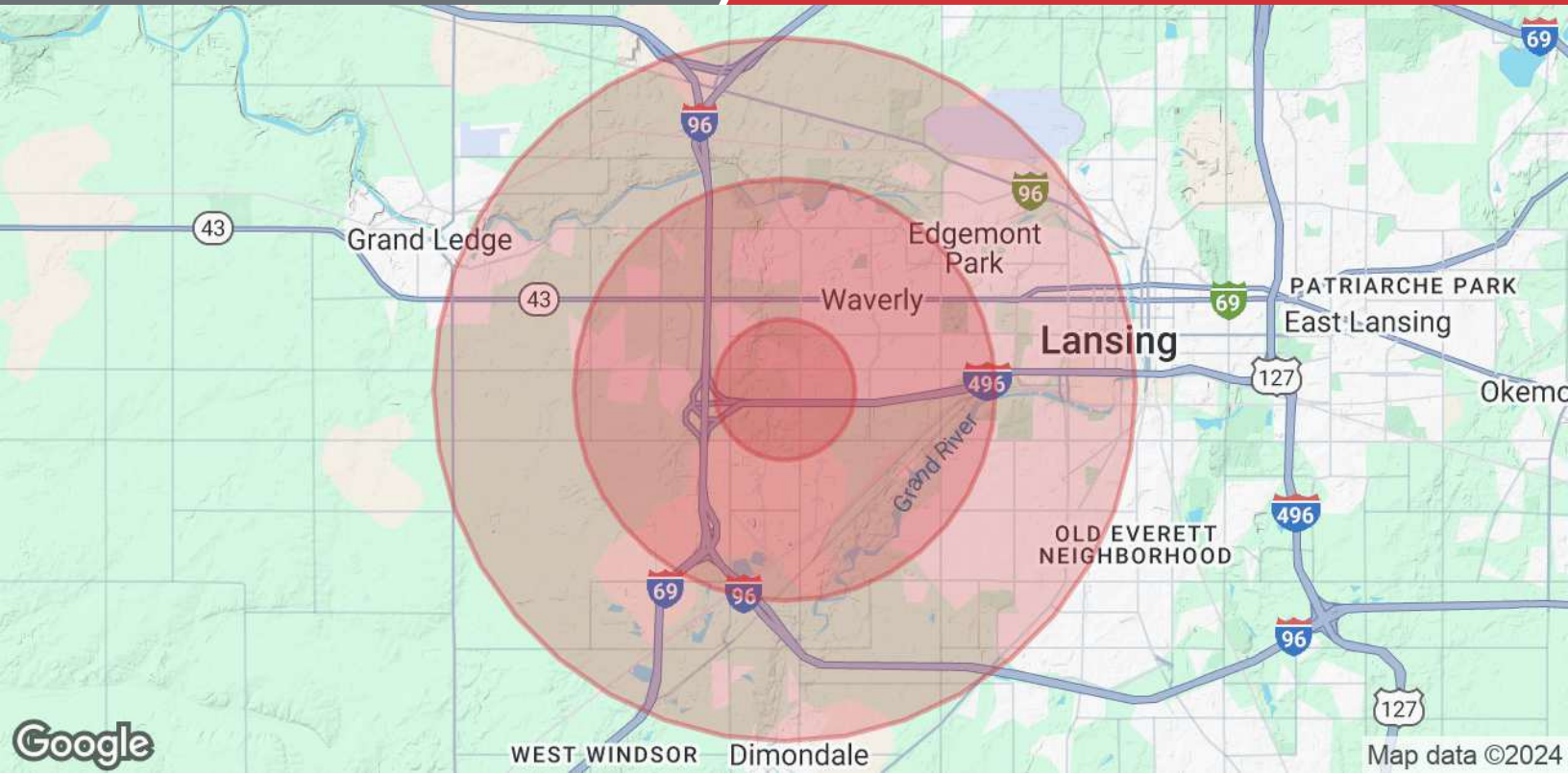
Suite 140 Floor Plan



Suite 150 Floor Plan







<b>Population</b>	<b>1 Mile</b>	<b>3 Miles</b>	<b>5 Miles</b>
Total Population	3,525	35,395	93,819
Average Age	48	43	41
Average Age (Male)	45	41	39
Average Age (Female)	50	45	42
<b>Households &amp; Income</b>	<b>1 Mile</b>	<b>3 Miles</b>	<b>5 Miles</b>
Total Households	1,632	16,069	41,123
# of Persons per HH	2.2	2.2	2.3
Average HH Income	\$101,971	\$93,392	\$83,588
Average House Value	\$231,127	\$243,065	\$199,781

Demographics data derived from AlphaMap