

# 604 COURTLAND ST.

■ 945 - 6,595 SF AVAILABLE





# PROPERTY INFORMATION

604 Courtland is a 3-story office building with excellent access and visibility from I-4. There are numerous restaurants, retail, and amenities nearby.

- 72,214 SF Building
- Easy access to I-4, minutes to Downtown Orlando, Winter Park, and Maitland Center
- Ample Parking - 4/1,000 Ratio

SUITE	RSF
121	945
131	1,504
180	4,229
250	6,595
300	2,639





604 COURTLAND ST.



172,000 VEHICLES PER DAY





# AMENITIES

## FOOD & DRINK

1. Christner's Prime Steak & Lobster
2. Starbucks
3. Denny's
4. Blaze Pizza
5. Miller's Ale House
6. Fleming's Prime Steakhouse
7. Light on the Sugar Bakery Cafe
8. The Acre
9. Tornatore's
10. LaSpada's Original Cheesesteaks
11. La Campana Mexican Restaurant
12. 4 Rivers Original Smokehouse
13. Mooyah Burgers
14. Hunger Street Tacos
15. Hillstone
16. Bar Italia
17. The Hangry Bison
18. Crumbl Cookies
19. Mediterranean Deli
20. Tap Room at Dubsdread
21. Quesa Loco
22. Jeff's Bagels
23. Oh Hey Cafe

## HOTELS

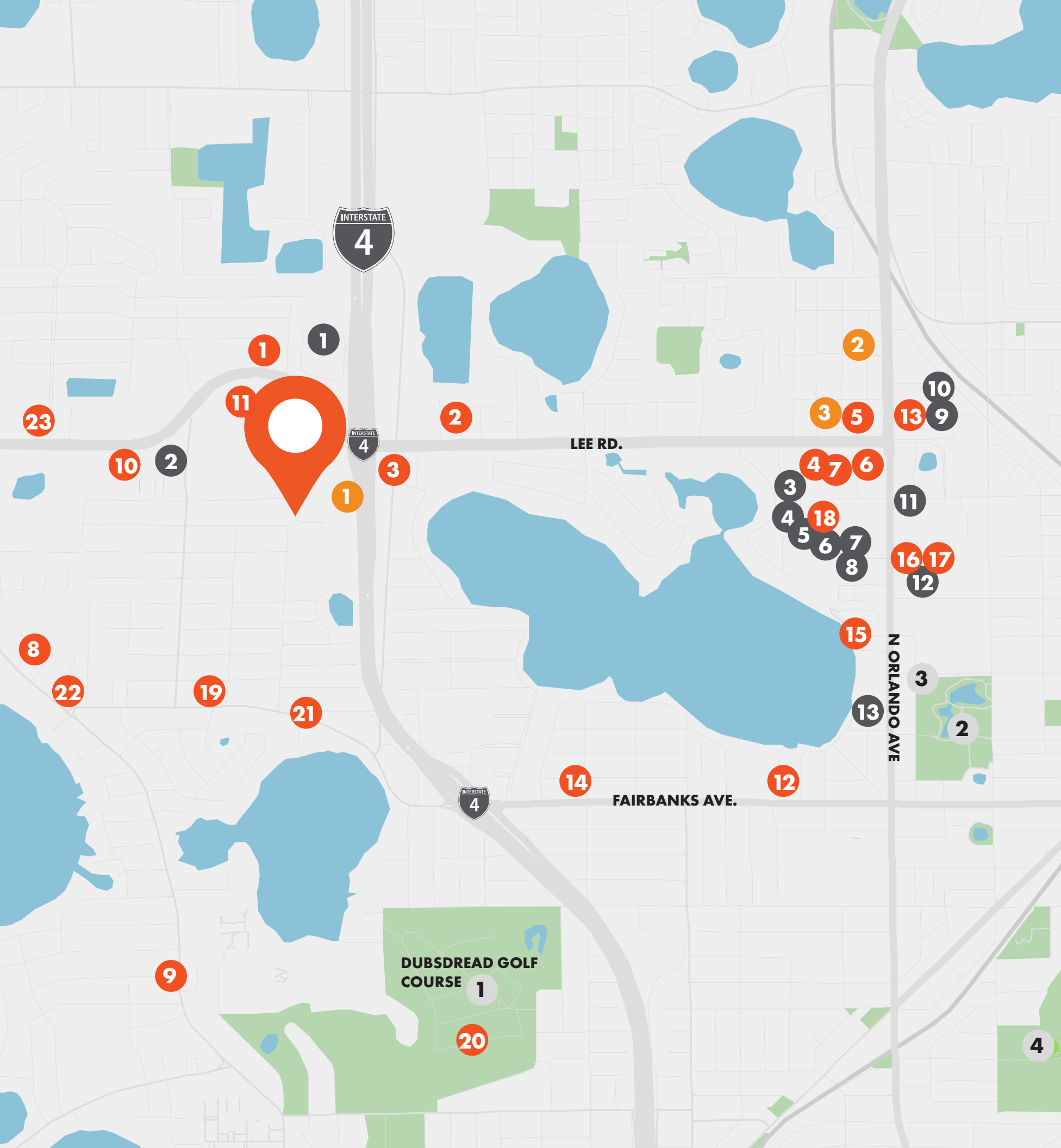
1. Countryside Inn & Suites
2. SpringHill Suites by Marriott
3. Hilton Garden Inn

## RETAIL

1. The Home Depot
2. Walmart Neighborhood Market
3. LA Fitness
4. Five Below
5. Marshall's
6. Home Goods
7. Office Depot
8. Michael's
9. Whole Foods
10. Nordstrom Rack
11. Chase Bank
12. Publix
13. Trader Joe's

## PLACES

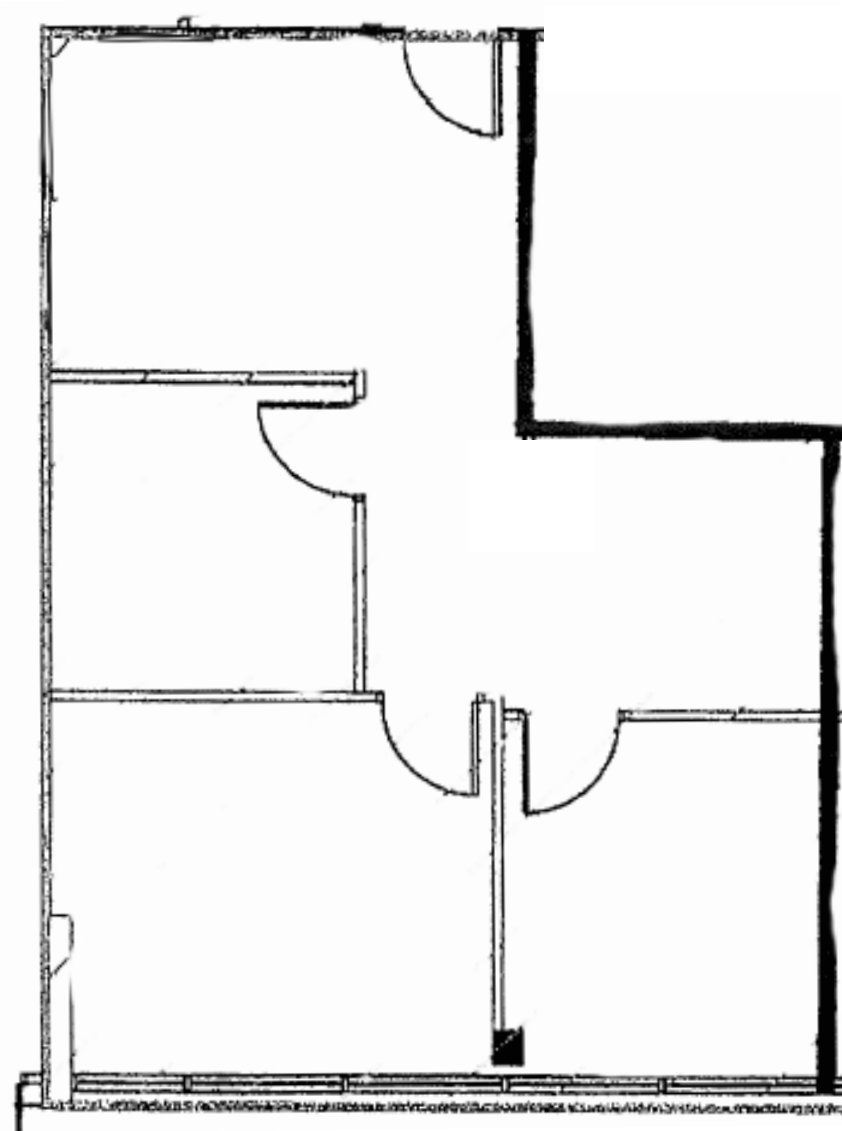
1. Dubsdread Golf Course
2. Martin Luther King Jr. Park
3. Winter Park Public Library
4. Mead Botanical Garden



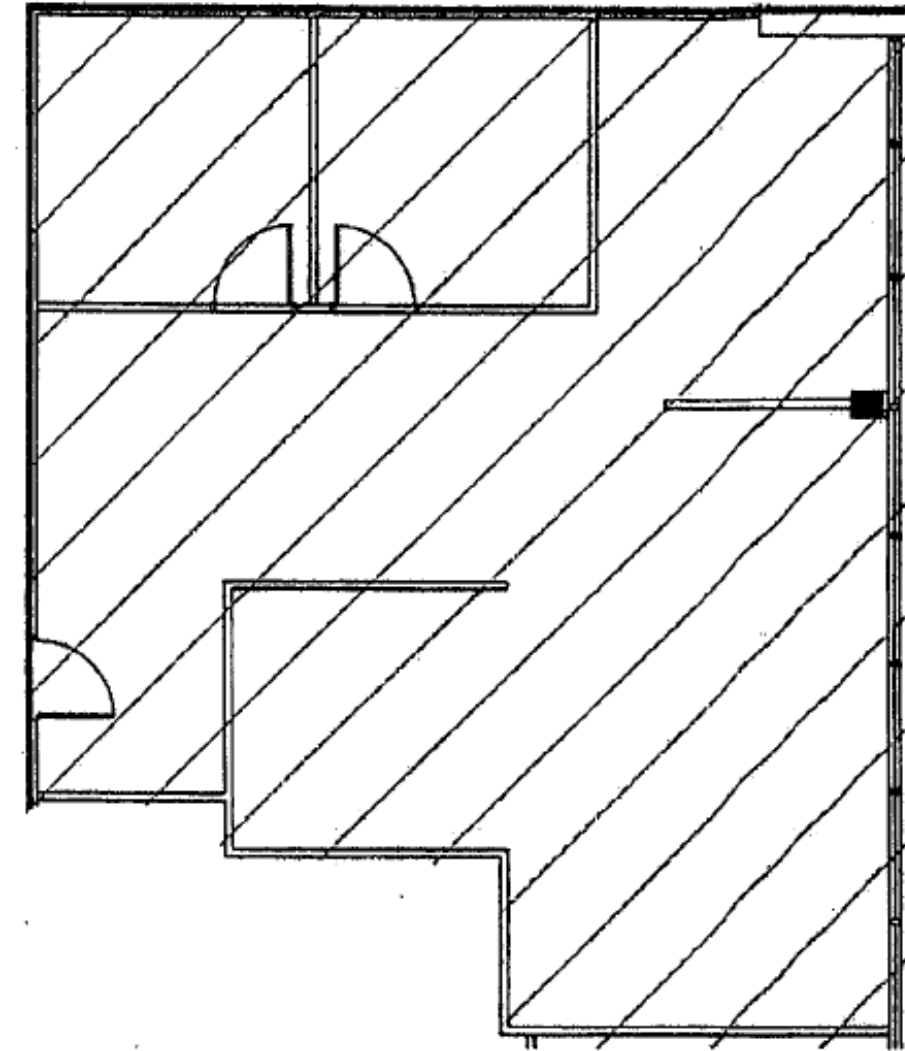


# FLOOR PLANS

**SUITE 121**  
945 SF AVAILABLE



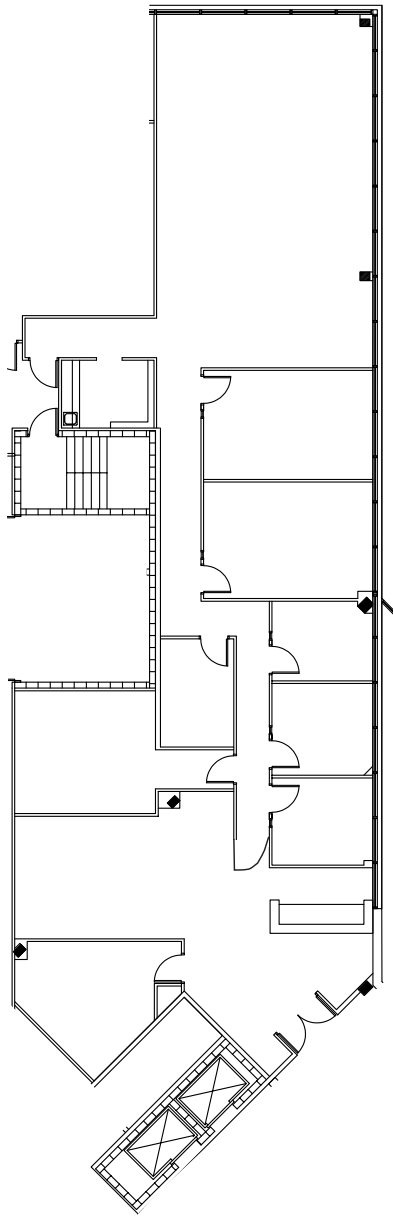
**SUITE 131**  
1,504 SF AVAILABLE 3/1/2026



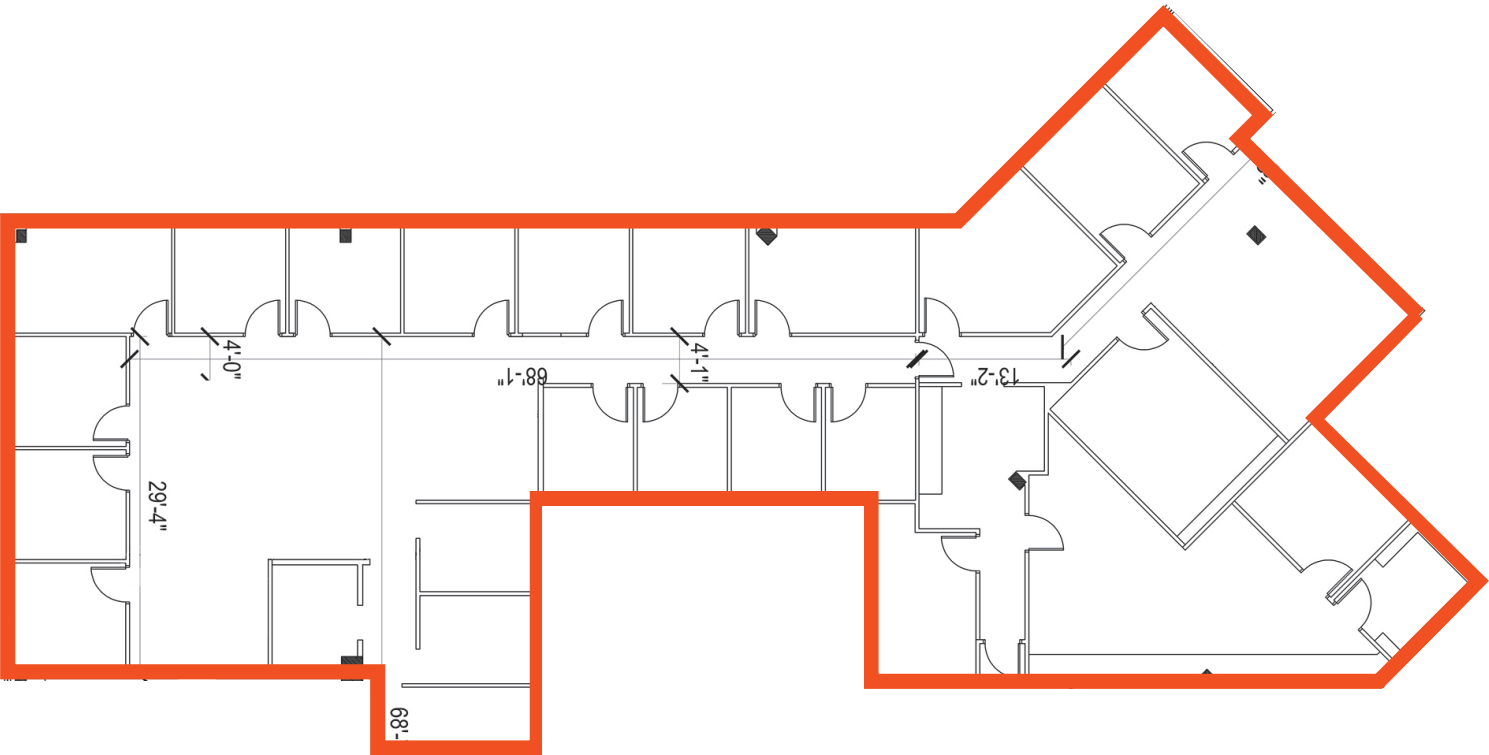


# FLOOR PLANS

**SUITE 180**  
4,229 SF AVAILABLE



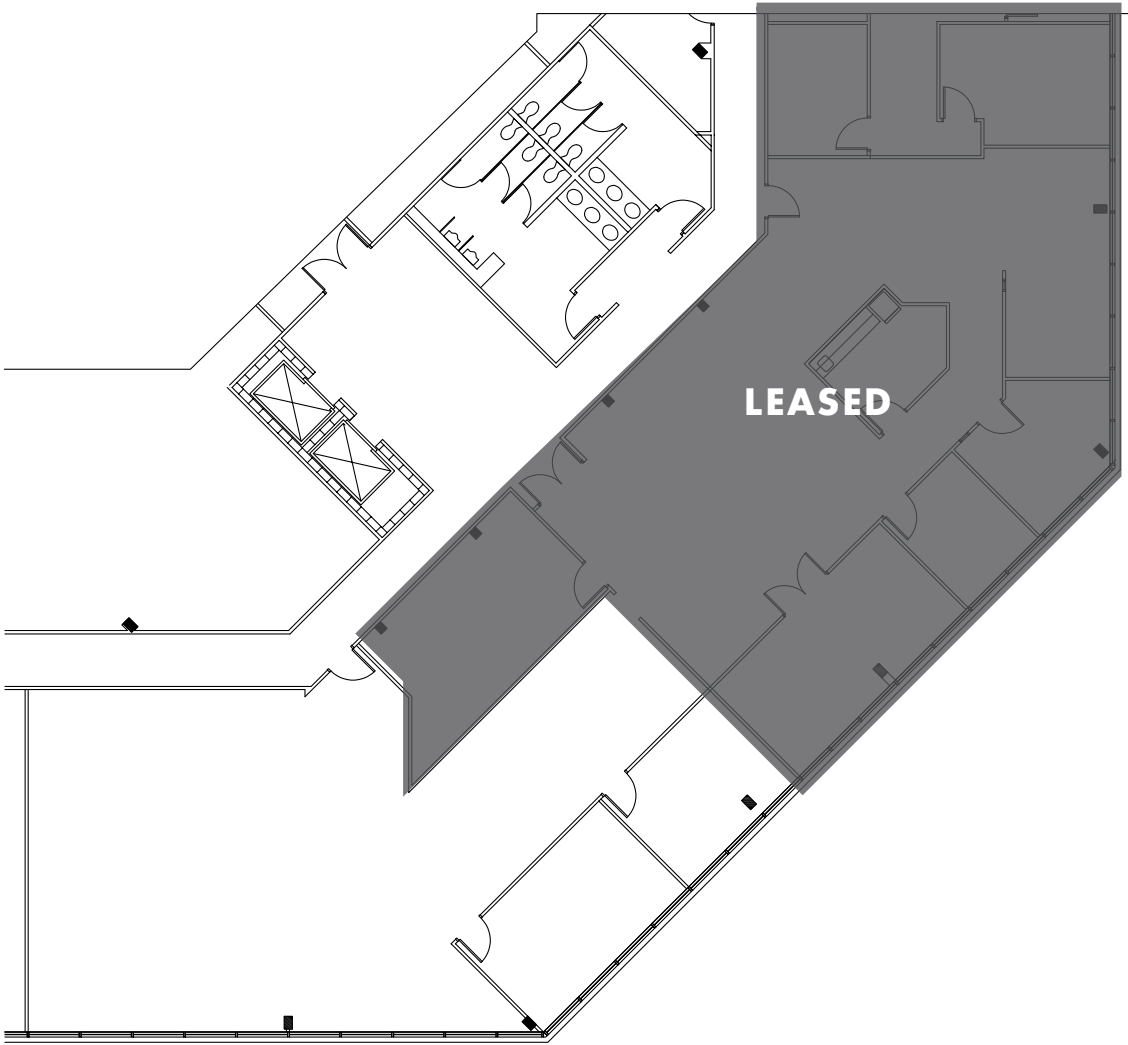
**SUITE 250**  
6,595 SF AVAILABLE





# FLOOR PLANS

**SUITE 300**  
2,639 SF AVAILABLE





# PHOTOS







## FOR MORE INFORMATION:

### **KEVIN WILL**

Vice President

407.458.5888

[kevin.will@foundrycommercial.com](mailto:kevin.will@foundrycommercial.com)

### **NICK HEEB**

Senior Associate

772.631.1258

[nick.heeb@foundrycommercial.com](mailto:nick.heeb@foundrycommercial.com)

**FOUNDRY**  
COMMERCIAL