



## Eden North Centre

1021 Eden Way N  
Chesapeake, Virginia 23320

### Property Highlights

- Modern commercial property with exceptional curb appeal
- Convenient access to major transportation routes
- Ample parking for clients and employee

### Property Overview

Discover an exceptional leasing opportunity at this prominent address in Chesapeake, VA. This modern commercial property boasts a prime location with easy access to major transportation routes, making it convenient for both clients and employees. Ample parking, and customizable office spaces make this property an ideal choice for discerning tenants. With its sleek design and impressive curb appeal, the property offers a prestigious image for businesses and is ready to accommodate the unique requirements of its future occupants.

### Offering Summary

|                       |                               |
|-----------------------|-------------------------------|
| <b>Lease Rate:</b>    | \$2,790/month, net janitorial |
| <b>Building Size:</b> | 15,000 SF                     |
| <b>Available SF:</b>  | 1,674 SF                      |
| <b>Lot Size:</b>      | 1.522 AC                      |

| Spaces           | Lease Rate        | Space Size |
|------------------|-------------------|------------|
| <b>Suite 116</b> | \$2,790 per month | 1,674 SF   |

### For More Information

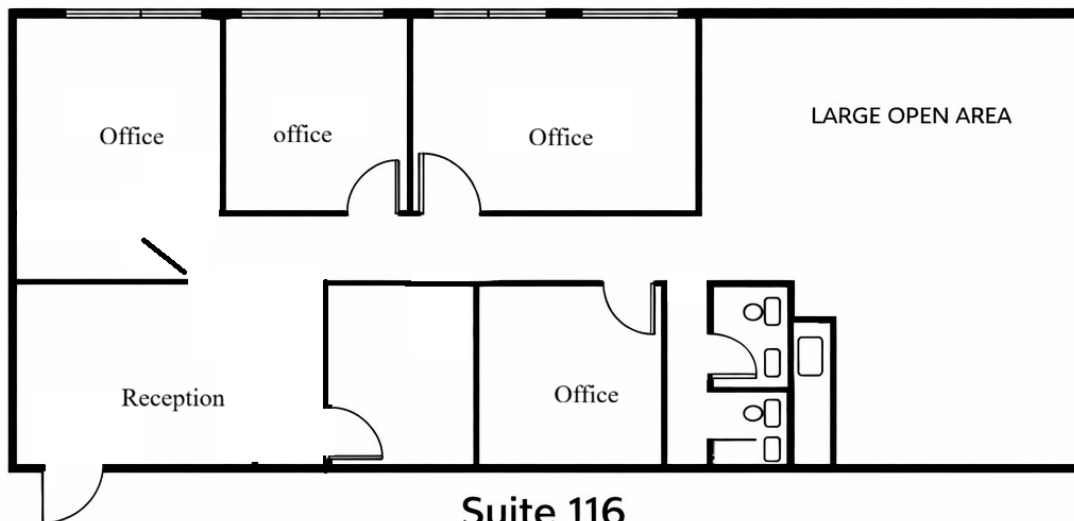
**Patrick L. Reynolds, CCIM, SIOR**

O: 757 216 8438  
patrickreynolds@naidominion.com

**Matt Wilbricht**

O: 757 216 8438  
mattwilbricht@naidominion.com

**1021 Eden Way N, Chesapeake, VA 23320**



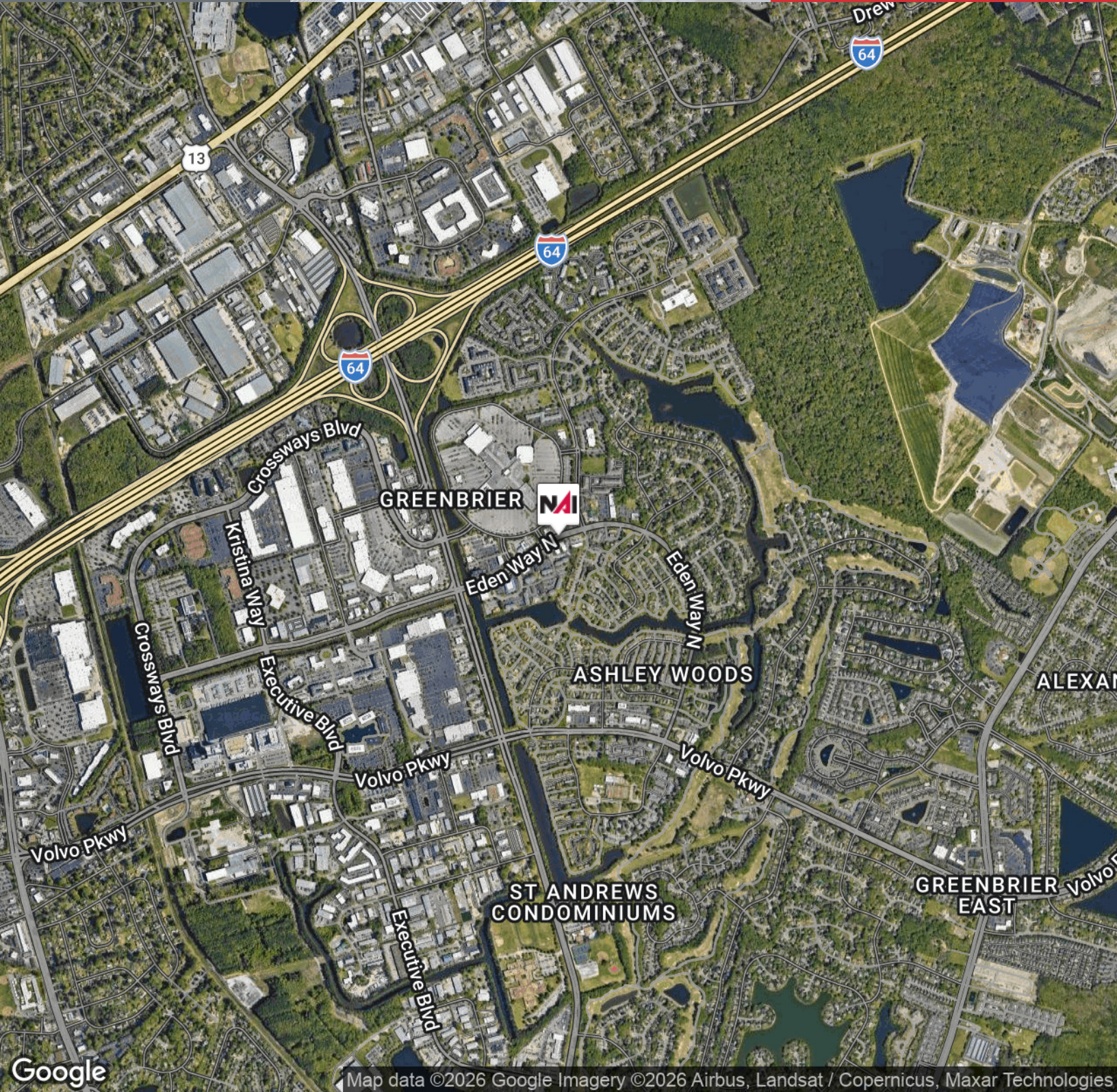
**Suite 116**  
1,674 RSF

1021 Eden Way North  
Chesapeake, VA 23320

Add text here...

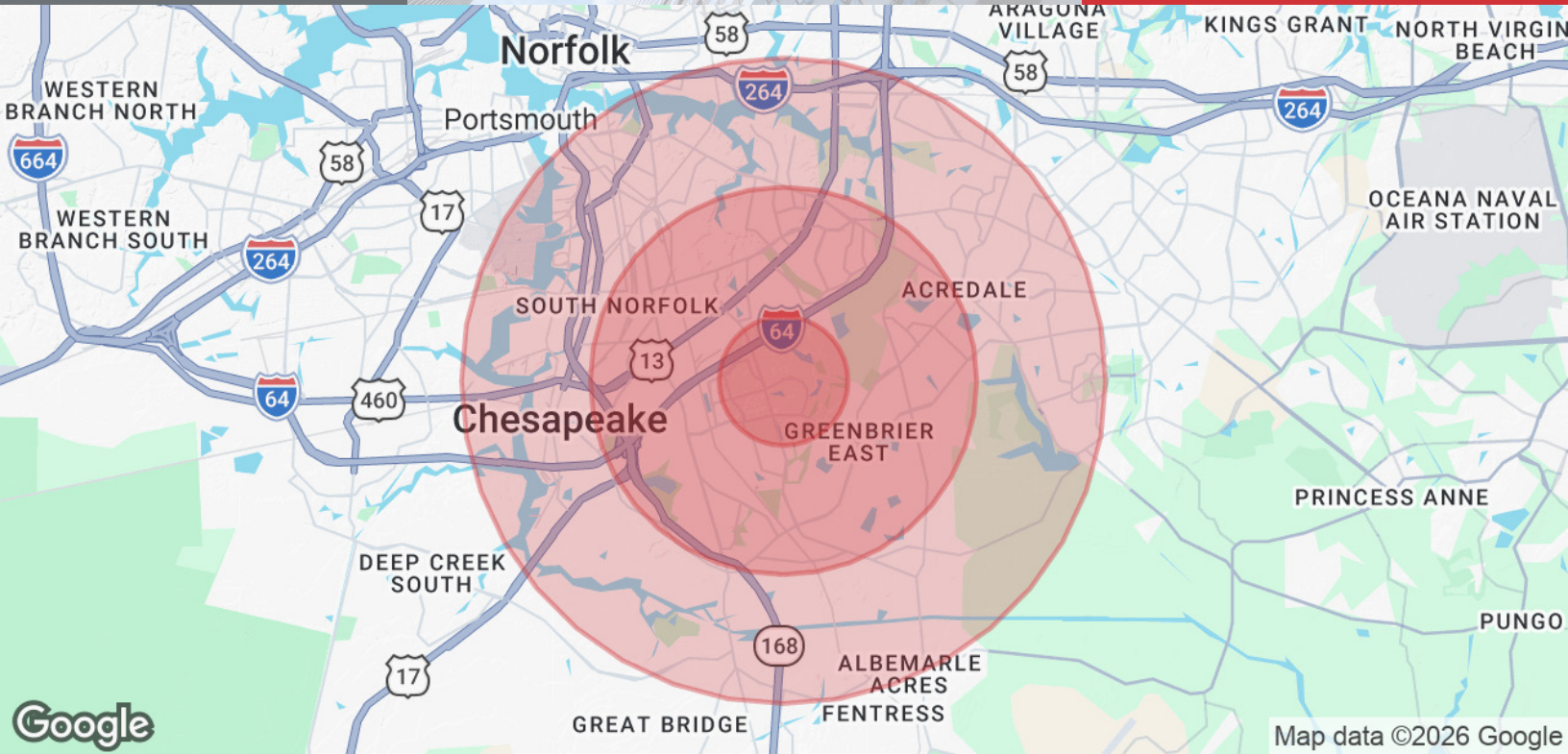
1021 Eden Way N, Chesapeake, VA 23320

We obtained the information above from sources we believe to be reliable. However, we have not verified its accuracy and make no guarantee, warranty or representation about it. It is submitted subject to the possibility of errors, omissions, change of price, rental or other conditions, prior sale, lease or financing, or withdrawal without notice. We include projections, opinions, assumptions or estimates for example only, and they may not represent current or future performance of the property. You and your tax and legal advisors should conduct your own investigation of the property and transaction.



1021 Eden Way N, Chesapeake, VA 23320

We obtained the information above from sources we believe to be reliable. However, we have not verified its accuracy and make no guarantee, warranty or representation about it. It is submitted subject to the possibility of errors, omissions, change of price, rental or other conditions, prior sale, lease or financing, or withdrawal without notice. We include projections, opinions, assumptions or estimates for example only, and they may not represent current or future performance of the property. You and your tax and legal advisors should conduct your own investigation of the property and transaction.



**Population**

**1 Mile**

**3 Miles**

**5 Miles**

|                             |        |         |         |
|-----------------------------|--------|---------|---------|
| <b>Total Population</b>     | 10,327 | 100,384 | 211,200 |
| <b>Average Age</b>          | 39     | 40      | 40      |
| <b>Average Age (Male)</b>   | 37     | 38      | 38      |
| <b>Average Age (Female)</b> | 41     | 42      | 41      |

**Households & Income**

**1 Mile**

**3 Miles**

**5 Miles**

|                            |           |           |           |
|----------------------------|-----------|-----------|-----------|
| <b>Total Households</b>    | 4,873     | 40,630    | 81,870    |
| <b># of Persons per HH</b> | 2.1       | 2.5       | 2.6       |
| <b>Average HH Income</b>   | \$93,971  | \$100,147 | \$105,547 |
| <b>Average House Value</b> | \$266,386 | \$317,934 | \$340,548 |

*Demographics data derived from AlphaMap*

**1021 Eden Way N, Chesapeake, VA 23320**

We obtained the information above from sources we believe to be reliable. However, we have not verified its accuracy and make no guarantee, warranty or representation about it. It is submitted subject to the possibility of errors, omissions, change of price, rental or other conditions, prior sale, lease or financing, or withdrawal without notice. We include projections, opinions, assumptions or estimates for example only, and they may not represent current or future performance of the property. You and your tax and legal advisors should conduct your own investigation of the property and transaction.