

Professional Office for Lease

2,417± SF 2nd Floor Space with Private Offices
9108 US Highway 19, Port Richey, FL 34668

**BERKSHIRE
HATHAWAY** | FLORIDA
HOMESERVICES | PROPERTIES
GROUP

COMMERCIAL DIVISION



For Lease

- 2,417± SF 2nd floor office space; **Can Be Divided!!**
- Floorplan includes 7 private offices, a large conference room, breakroom, storage and 2 restrooms
- Elevator and stairwell accessible
- Excellent visibility and exposure
- 55,000 Daily Traffic on US Highway 19
- Lease Rate: \$14.00 PSF NNN



Kristy Marcelle
Sales & Leasing Associate
727-239-9424
kmarcelle@bhhsflpg.com

Awarded #2 Producing Berkshire Hathaway Commercial Real Estate Company 2019

Teamwork | Integrity | Passion | Excellence

4950 West Kennedy Boulevard, Suite 300, Tampa, FL 33609 | 7916 Evolutions Way, Suite 210, Trinity, FL 34655

PH 813.739.5700 | bhhsflpgcommercial.com

.....

Professional Office for Lease

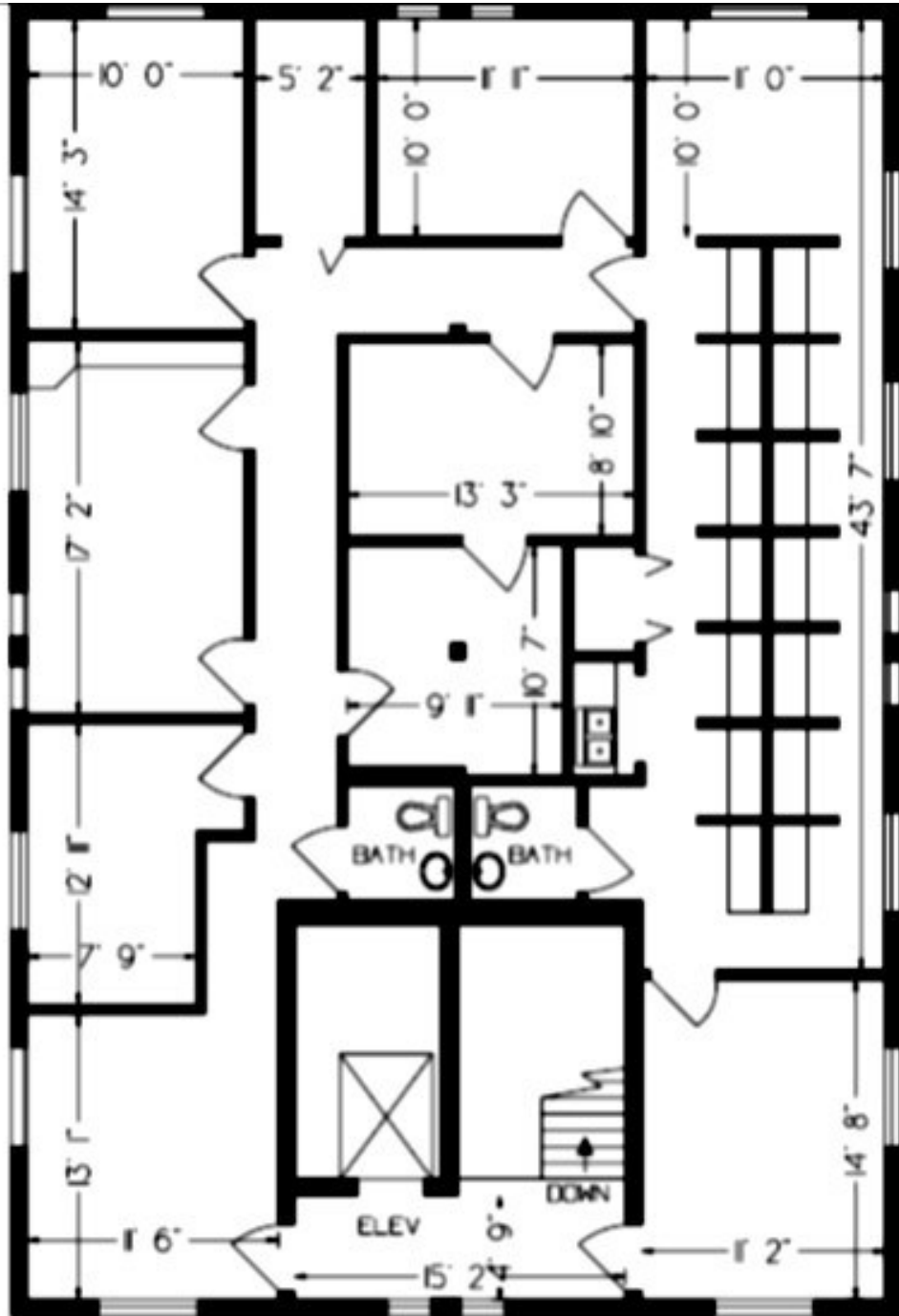
2,417± SF 2nd Floor Space with Private Offices

9108 US Highway 19, Port Richey, FL 34668

.....

**BERKSHIRE
HATHAWAY** | FLORIDA
HOMESERVICES | PROPERTIES
GROUP

COMMERCIAL DIVISION



2ND FLOOR

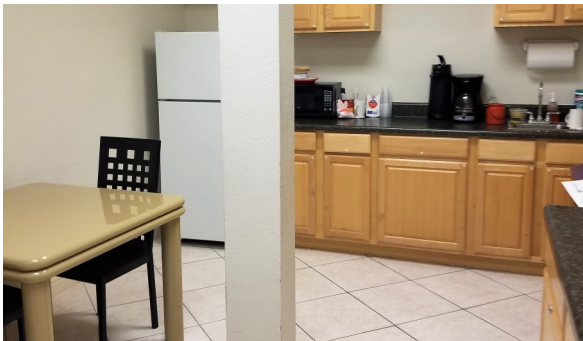
This information is from sources deemed to be reliable. We are not responsible for misstatements of facts, errors or omissions, prior sale, change of price, and/or terms or withdrawal from the market without notice. Buyer should verify all information with its' own representatives as well as state and local agencies. Brokers please note that a variable rate commission may exist on this offering that might result in a lower commission cost to the Seller if a Buyer's broker is not involved in the transaction. ©2022 BHH Affiliates, LLC. An independently owned and operated franchisee of BHH Affiliates, LLC. Berkshire Hathaway HomeServices and the Berkshire Hathaway HomeServices symbol are registered service marks of Columbia Insurance Company, a Berkshire Hathaway affiliate. EHO.

Professional Office for Lease

2,417± SF 2nd Floor Space with Private Offices
 9108 US Highway 19, Port Richey, FL 34668

BERKSHIRE HATHAWAY | FLORIDA PROPERTIES GROUP
 HOMESERVICES

COMMERCIAL DIVISION



AREA DEMOGRAPHICS (5 MILE RADIUS)

KEY FACTS

124,910
Population

51.0

Median Age

2.2

Average Household Size

120,479

Daytime Population

ANNUAL HOUSEHOLD SPENDING



\$1,320
Apparel & Services



\$105
Computers



\$2,376
Eating Out



\$3,618
Groceries



\$4,388
Health Care

INCOME



\$42,083
Median Household Income



\$25,663
Per Capita Income



\$92,859
Median Net Worth

EMPLOYMENT



63%
White Collar



22%
Blue Collar



15%
Services

4.9%

Unemployment Rate

This information is from sources deemed to be reliable. We are not responsible for misstatements of facts, errors or omissions, prior sale, change of price, and/or terms or withdrawal from the market without notice. Buyer should verify all information with its' own representatives as well as state and local agencies. Brokers please note that a variable rate commission may exist on this offering that might result in a lower commission cost to the Seller if a Buyer's broker is not involved in the transaction. ©2022 BHH Affiliates, LLC. An independently owned and operated franchisee of BHH Affiliates, LLC. Berkshire Hathaway HomeServices and the Berkshire Hathaway HomeServices symbol are registered service marks of Columbia Insurance Company, a Berkshire Hathaway affiliate. EHO.