



FOR SALE OR LEASE | ±32,937 SF

1101 W THORNDALE AVENUE

ITASCA, IL

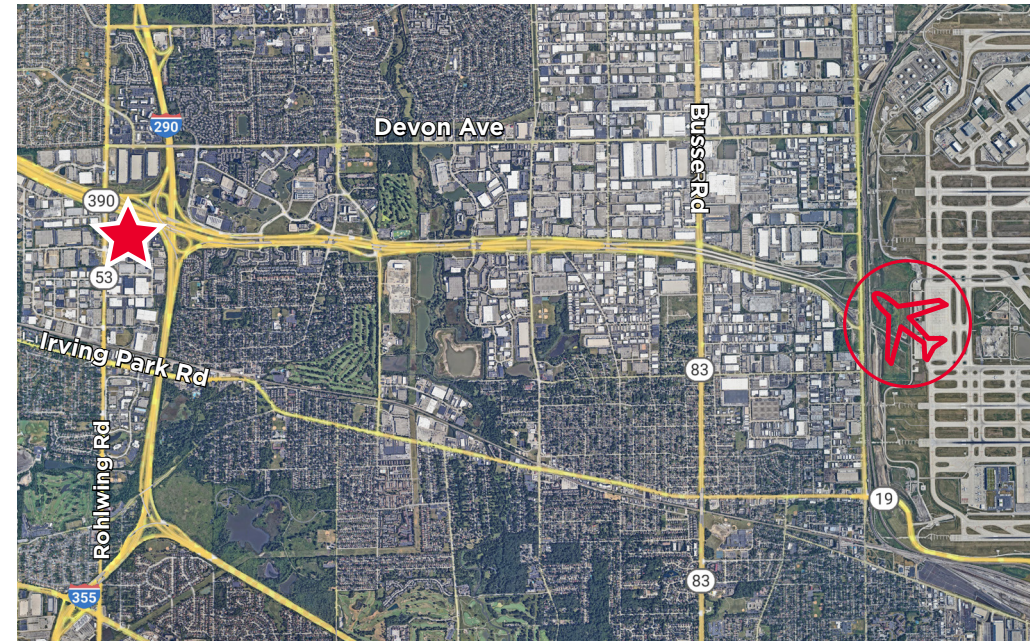


**CUSHMAN &
WAKEFIELD**

1101 W THORNDALE AVENUE | ITASCA, IL

BUILDING SPECIFICATIONS

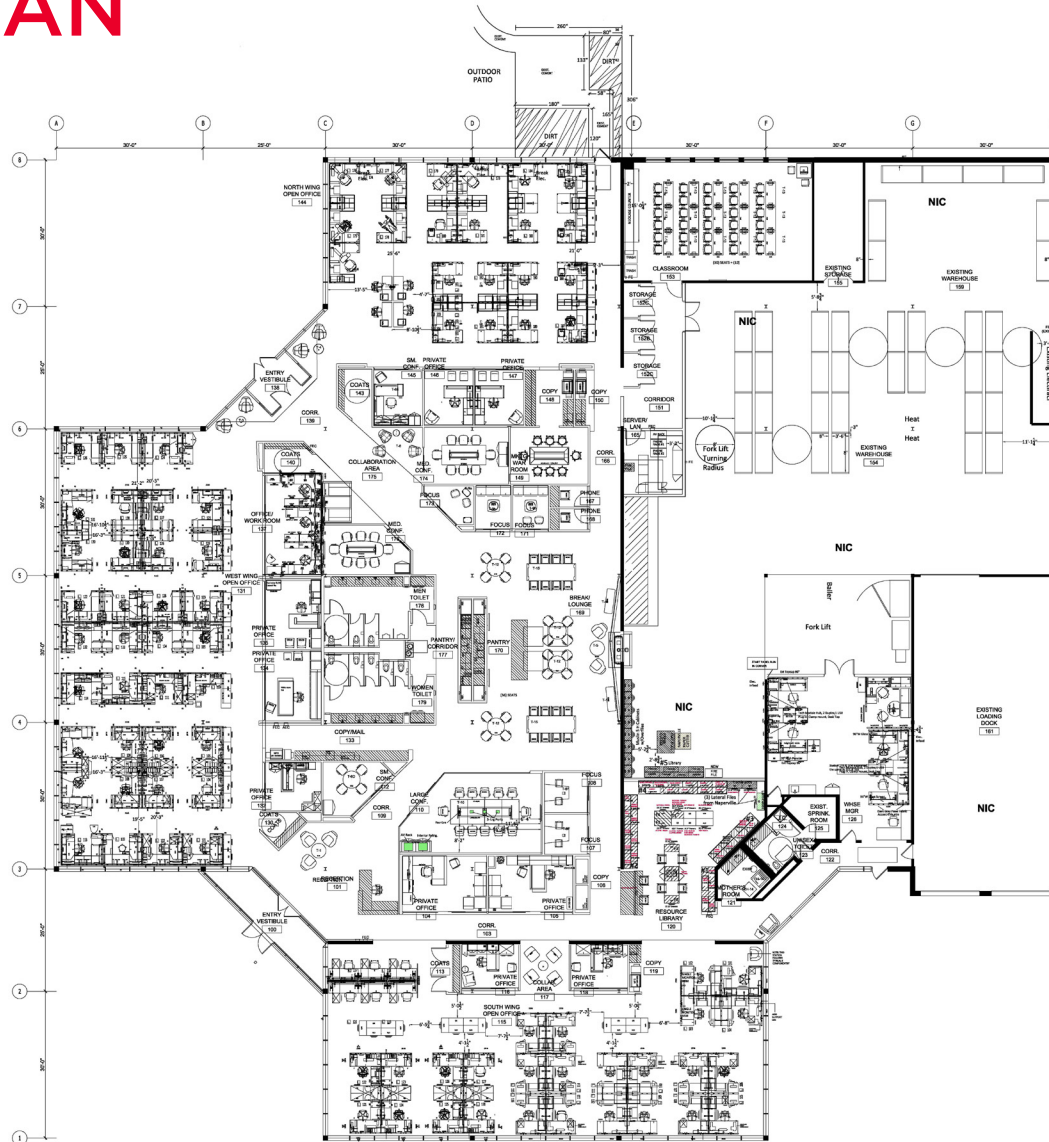
TOTAL BUILDING SIZE:	±32,937 SF
LAND AREA:	2.74 Acres
OFFICE:	±15,954 SF (can be reduced to ±7,500 SF)
CLEAR HEIGHT:	14'
LOADING:	1 Exterior dock 1 Drive-in-door
PARKING:	100 Cars
SPRINKLERED:	Yes
POWER:	1,200 Amps, 277/480 Volts
YEAR BUILT:	1980
SALE PRICE:	Subject to Offer



AERIAL MAP

- Exposure on Rohlwing Road
 - Large outside patio area
- Close proximity to I-290 & 390 interchanges
- Located in DuPage County

FLOOR PLAN



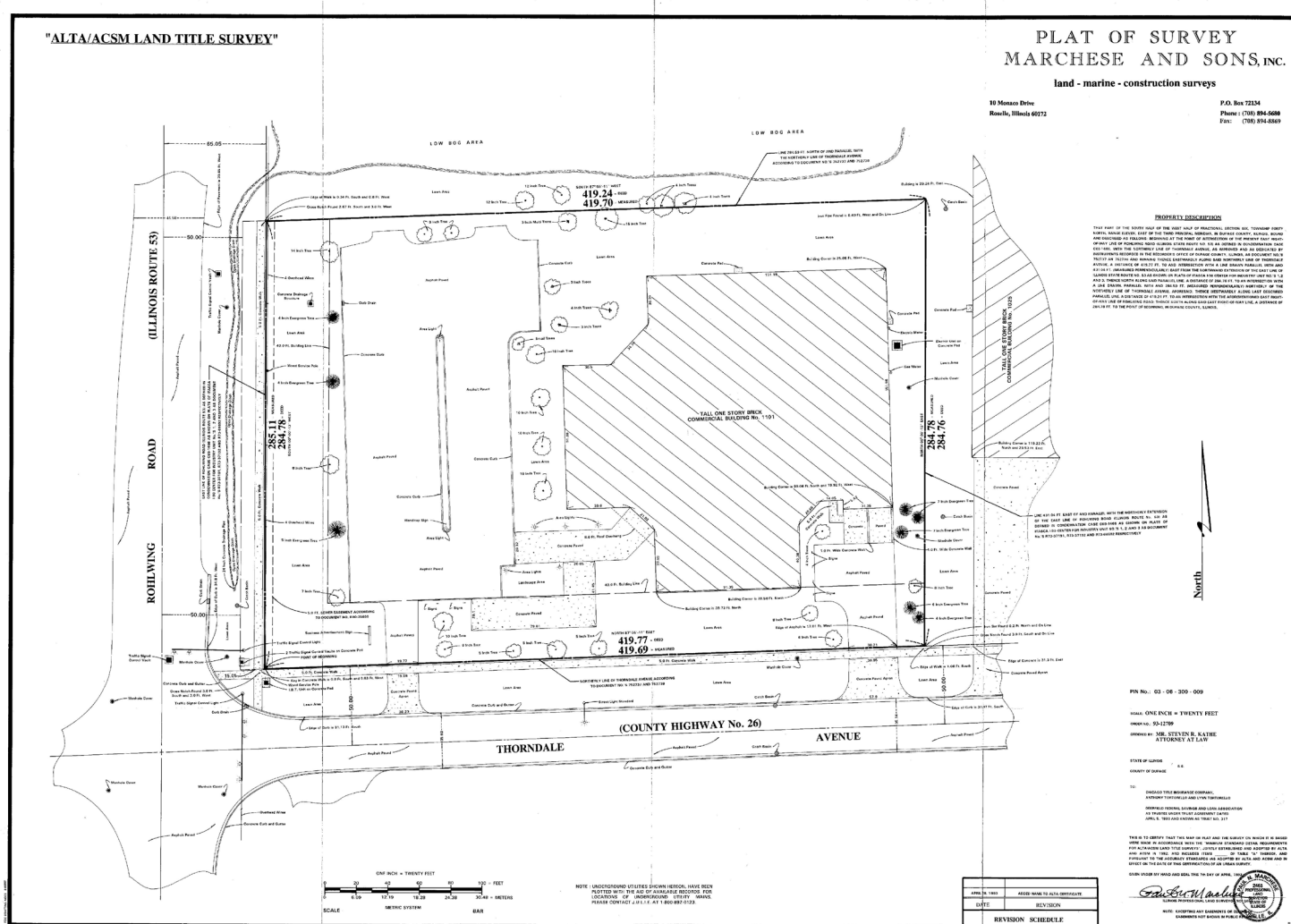
ERIC FISCHER
Executive Managing Director
+1 847 720 1369
eric.fischer@cushwake.com

STEVE STONE
Managing Director
+1 847 720 1364
steve.stone@cushwake.com

GABRIEL STRAUSS
Associate
+1 847 518 3226
gabriel.strauss@cushwake.com



SURVEY



ERIC FISCHER
 Executive Managing Director
 +1 847 720 1369
 eric.fischer@cushwake.com

STEVE STONE
 Managing Director
 +1 847 720 1364
 steve.stone@cushwake.com

GABRIEL STRAUSS
 Associate
 +1 847 518 3226
 gabriel.strauss@cushwake.com



1101 W THORNDALE AVENUE | ITASCA, IL

INTERIOR PHOTOS



ERIC FISCHER
Executive Managing Director
+1 847 720 1369
eric.fischer@cushwake.com

STEVE STONE
Managing Director
+1 847 720 1364
steve.stone@cushwake.com

GABRIEL STRAUSS
Associate
+1 847 518 3226
gabriel.strauss@cushwake.com





FOR MORE INFORMATION:

ERIC FISCHER

Executive Managing Director
+1 847 720 1369
eric.fischer@cushwake.com

STEVE STONE

Managing Director
+1 847 720 1364
steve.stone@cushwake.com

GABRIEL STRAUSS

Associate
+1 847 518 3226
gabriel.strauss@cushwake.com

