



# Santa Rosa's Airport Sub-Market Industrial Opportunity

## ±8,773 SF of Versatile Industrial Space

### Rent Negotiable

**3130 Regional Parkway, Suite A**  
**Santa Rosa | CA**

**NEWMARK**

For Sublease

**±8,773 RSF**

**RON REINKING**

Managing Director

707-583-8423 | [ron.reinking@nmrk.com](mailto:ron.reinking@nmrk.com) | CA RE LIC # 00931004



# Building Highlights

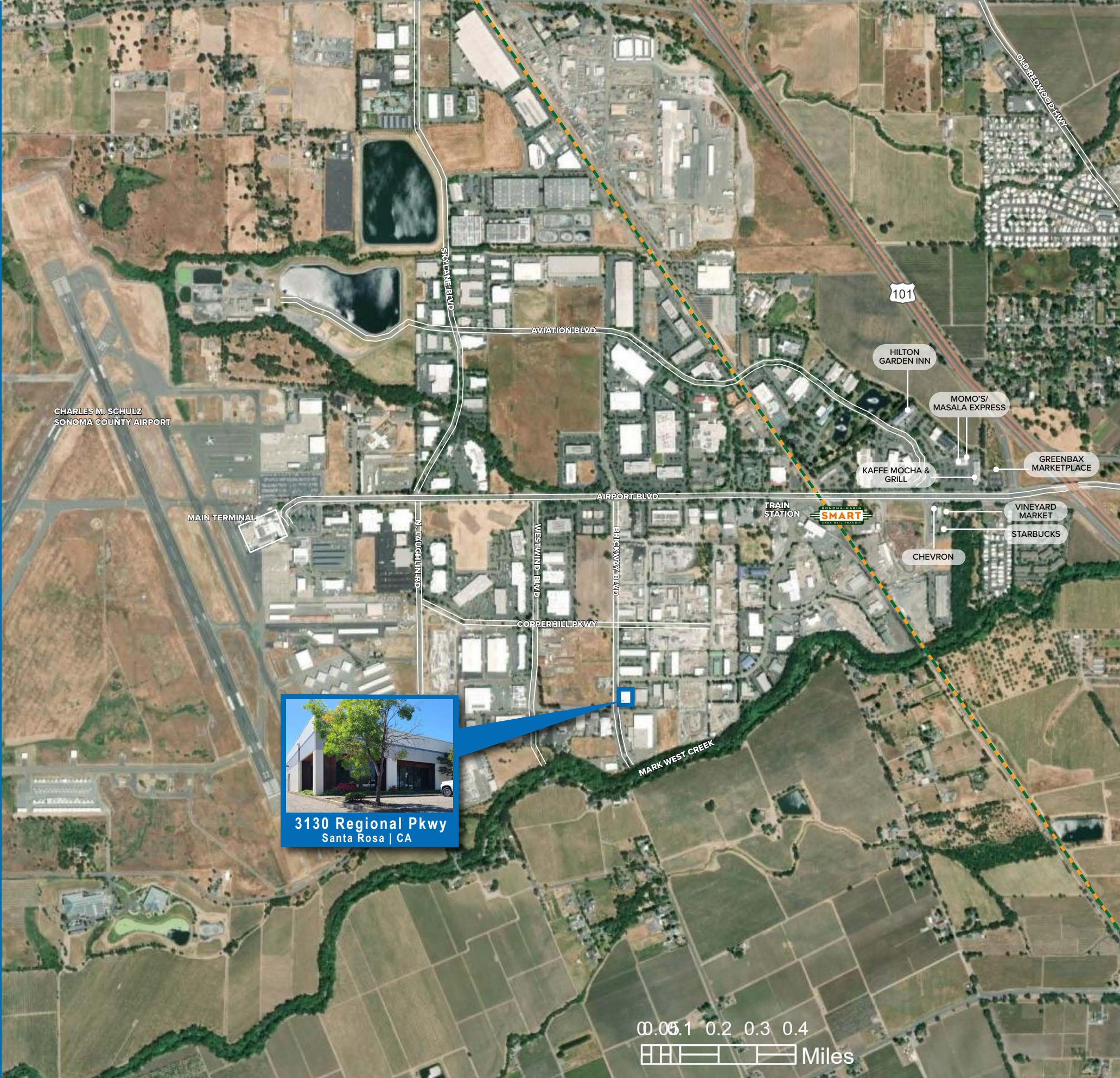
- ±8,773 RSF Available for Sublease
- Sublease Through May 31, 2027
- Rent Negotiable

WAREHOUSE: ±8,523 RSF  
OFFICE: ±250 RSF

- One restroom
- Three Grade-Level Doors (1) 10x14 (2) 10x10
- Fire Sprinklers
- Skylights
- Insulated Ceiling in Warehouse
- Concrete Construction
- 480/208v; 225 AMP Electrical Service
- Drive Around Delivery Access
- ±16' Clear Height / Span
- Parking: 11 Stalls Front; 5 Stalls Rear

# Location Highlights

- Located Blocks From Charles M. Schulz - Sonoma County Airport
- 5 Minutes From US Hwy-101 Allowing Ease of Access
- Walking Distance to SMART Station
- Food Services Nearby



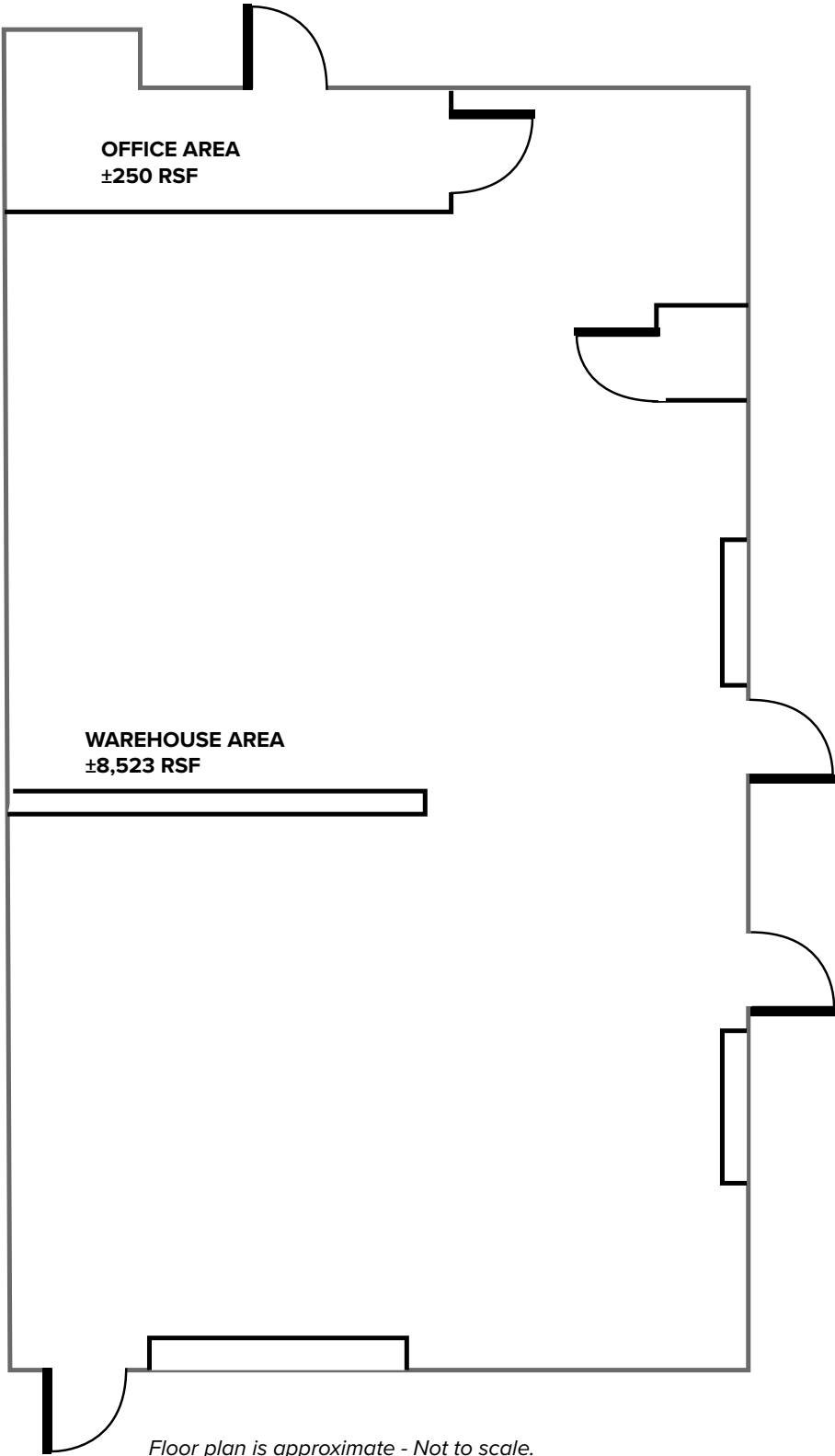


# Floor Plan

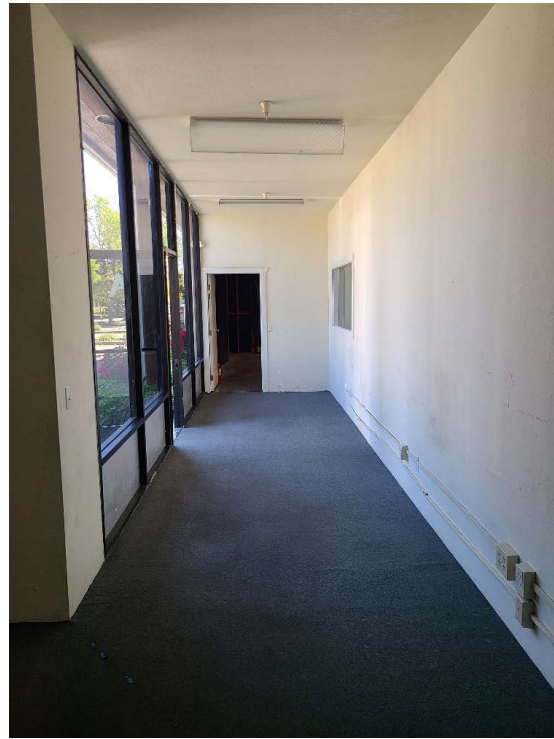
**±8,773 RSF**  
TOTAL SQUARE FOOTAGE

**±8,523 RSF**  
WAREHOUSE AREA

**±250 RSF**  
OFFICE AREA



Floor plan is approximate - Not to scale.





# Santa Rosa's Airport Sub-Market Industrial Opportunity

## ±8,773 SF of Versatile Industrial Space

### Rent Negotiable



±8,773 RSF

3130 Regional Parkway, Suite A  
Santa Rosa | CA

**NEWMARK**

**RON REINKING**

Managing Director

707-583-8423 | [ron.reinking@nmrk.com](mailto:ron.reinking@nmrk.com)

CA RE LIC #00931004

1101 Fifth Avenue, Suite 370, San Rafael, CA 94901 707-583-8400  
[nmrk.com](http://nmrk.com)

The distributor of this communication is performing acts for which a real estate license is required. The information contained herein has been obtained from sources deemed reliable but has not been verified and no guarantee, warranty or representation, either express or implied, is made with respect to such information. Terms of sale or lease and availability are subject to change or withdrawal without notice. Last updated: January 16, 2026 2:45 PM