

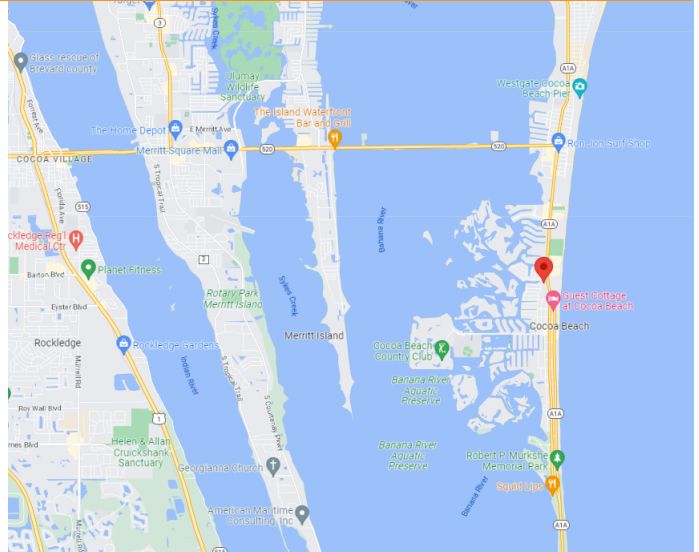
FOR LEASE OFFICE

ESO EQUITY GROUP PLAZA

150 Cocoa Isles Blvd., Cocoa, FL 32931



- Beautifully Landscaped and Well Appointed Office Building in Cocoa Beach!
- Located Directly on A1A and only 5.7 Miles to Cape Canaveral. High Traffic A1A - 28,500 Vehicles Daily
- Excellent Location for High Tech and Professional Office Users, 2 Available Suites and a Variety of Floorplans for Individual Needs
- Suite 201, 1,950 SF - Suite 304, 1,447 SF, Each Suite is Unique
- Monument Signage Directly on A1A
- Elevator Building, Common Restrooms on Each Floor, Plentiful Parking, Peaceful Outdoor Areas
- \$17/SF/YR + \$6.78/SF/YR NNN



JMREALESTATE.COM



COMMERCIAL
MANAGEMENT
LEASING
SALES

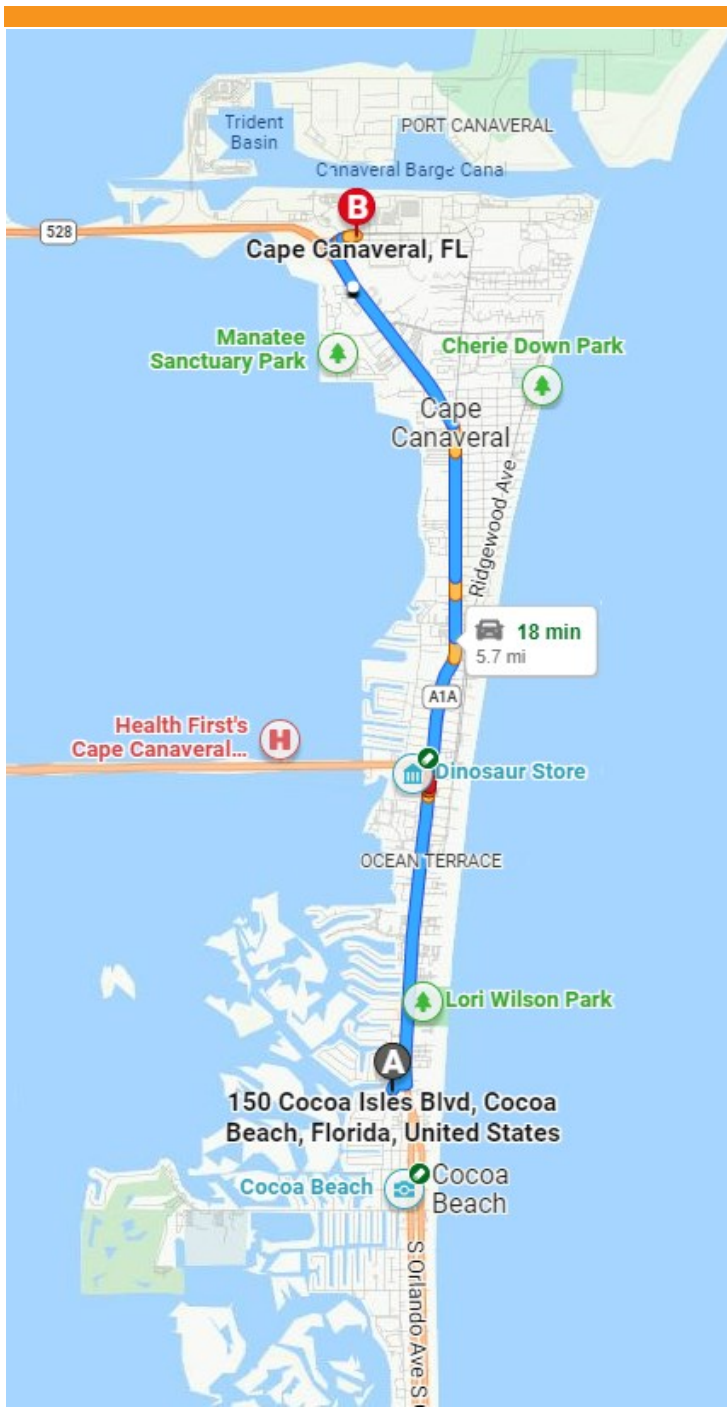
Courtney Smith
JM Real Estate, Inc.
321.242.2882
Cell: 321.423.4305
Courtney@JMRealEstate.com

Information contained herein has been obtained from others and is considered to be reliable; however, a prospective purchaser, agent, or lessee is expected to verify all information to their satisfaction. We make no guarantee, warranty, or representations herein. Licensed Real Estate Broker.

FOR LEASE OFFICE

ESO EQUITY GROUP PLAZA

150 Cocoa Isles Blvd., Cocoa, FL 32931



DEMOGRAPHICS	1 mile	3 mile	5 mile
2022 Population	4,152	13,432	36,634
2027 Pop Projection	4,413	14,335	39,114
Growth 2022-2027	0.4%	0.6%	0.7%
Median Age	62.2	61.3	56.3
Bachelor's or Higher	42%	40%	37%
Average Income	\$101,47	\$91,760	\$91,214

JMREALESTATE.COM



COMMERCIAL
MANAGEMENT
LEASING
SALES

Courtney Smith
JM Real Estate, Inc.
321.242.2882
Cell: 321.423.4305
Courtney@JMRealEstate.com

Information contained herein has been obtained from others and is considered to be reliable; however, a prospective purchaser, agent, or lessee is expected to verify all information to their satisfaction. We make no guarantee, warranty, or representations herein. Licensed Real Estate Broker.

FOR LEASE OFFICE

ESO EQUITY GROUP PLAZA

150 Cocoa Isles Blvd., Cocoa, FL 32931



JMREALESTATE.COM



COMMERCIAL
MANAGEMENT
LEASING
SALES

Courtney Smith
JM Real Estate, Inc.
321.242.2882
Cell: 321.423.4305
Courtney@JMRealEstate.com

Information contained herein has been obtained from others and is considered to be reliable; however, a prospective purchaser, agent, or lessee is expected to verify all information to their satisfaction. We make no guarantee, warranty, or representations herein. Licensed Real Estate Broker.

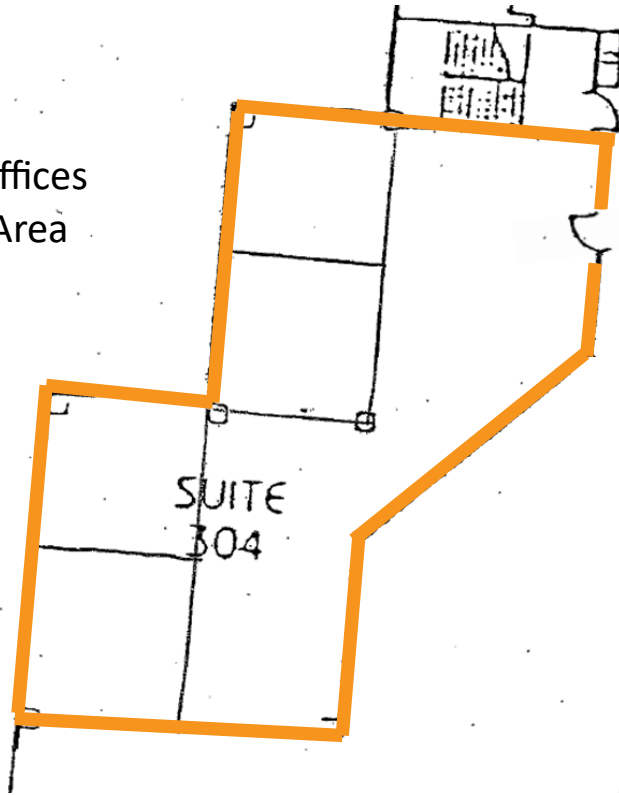
FOR LEASE OFFICE

ESO EQUITY GROUP PLAZA

150 Cocoa Isles Blvd., Cocoa, FL 32931

Suite 304
1,447 SF

Multiple Private Offices
Lobby/Reception Area
Open Work Area



JMREALESTATE.COM



COMMERCIAL
MANAGEMENT
LEASING
SALES

Courtney Smith
JM Real Estate, Inc.
321.242.2882
Cell: 321.423.4305
Courtney@JMRealEstate.com

Information contained herein has been obtained from others and is considered to be reliable; however, a prospective purchaser, agent, or lessee is expected to verify all information to their satisfaction. We make no guarantee, warranty, or representations herein. Licensed Real Estate Broker.