

63 GREAT ROAD

MAYNARD, MA

**BRICK AND
BEAM SPACE**

millpondsquare

FOR LEASE

SUITE 106 . 1,600 SF

SUITE 204 . 3,408 SF



COMMERCIAL
O'BRIEN
PROPERTIES, INC.

PROPERTY SUMMARY/SPECIFICATIONS

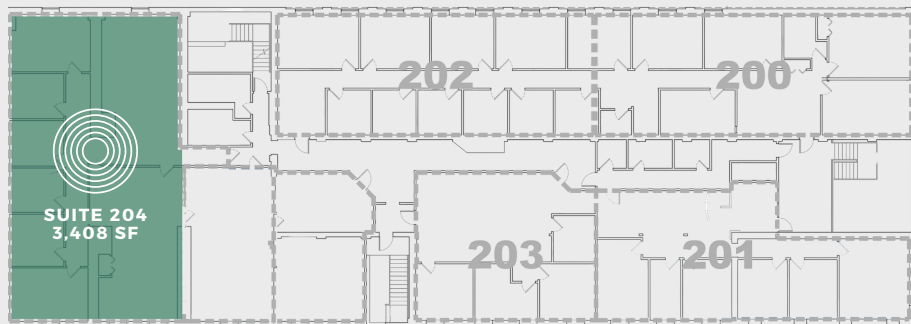
SUMMARY

Mill Pond Square, a two-story brick and beam office building located at the intersection of Route 117 and Main Street, offers high-tech tenants a Cambridge feel with the convenience of a suburban location. Boasting spacious lobbies, brick and beam construction and a multitude of local amenities, the building has a unique high-end character and image rarely found. Just a few minutes walk from Maynard center, where you'll find cafes, restaurants, and business services.

1ST FLOOR
1,600 SF



2ND FLOOR
3,408 SF

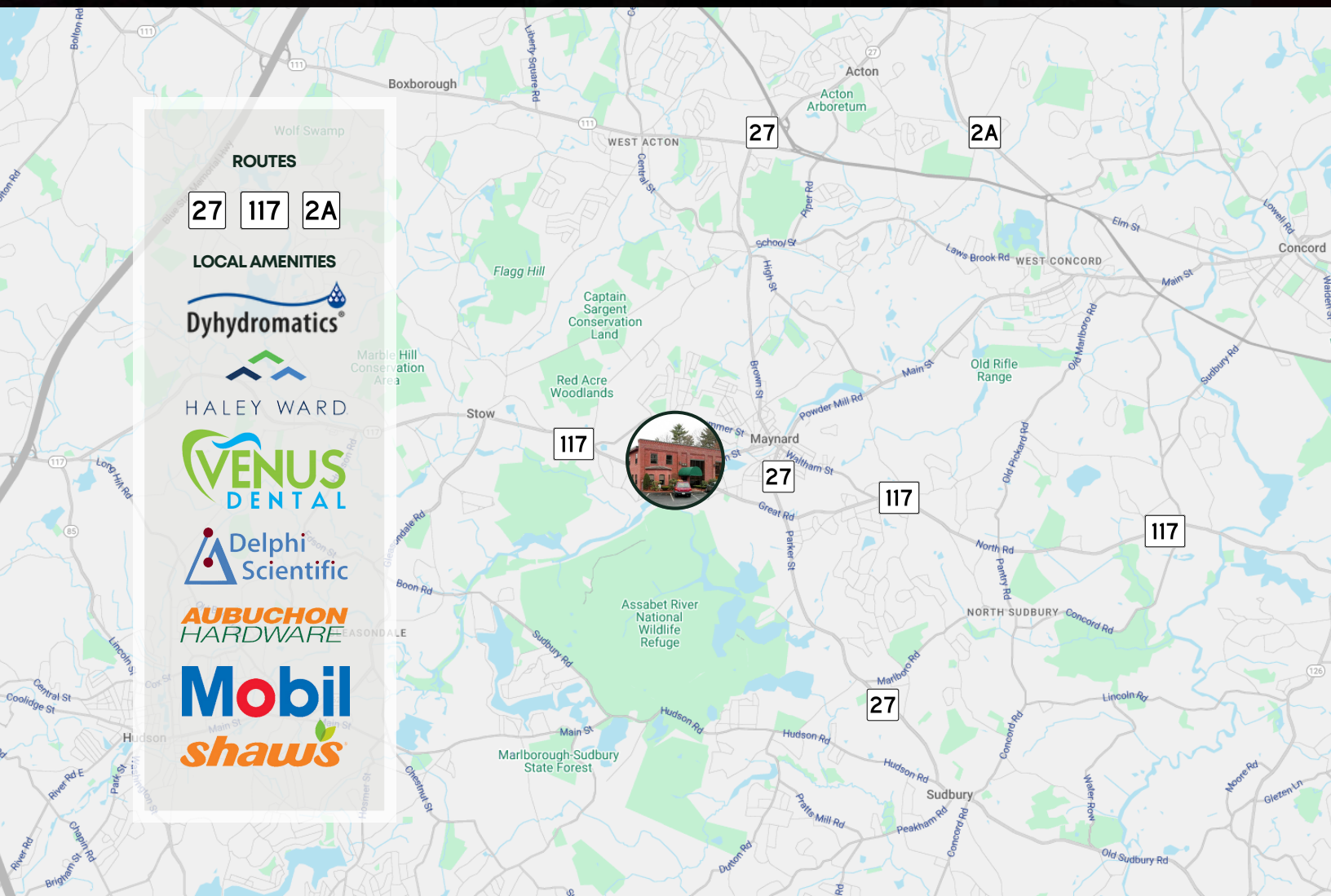
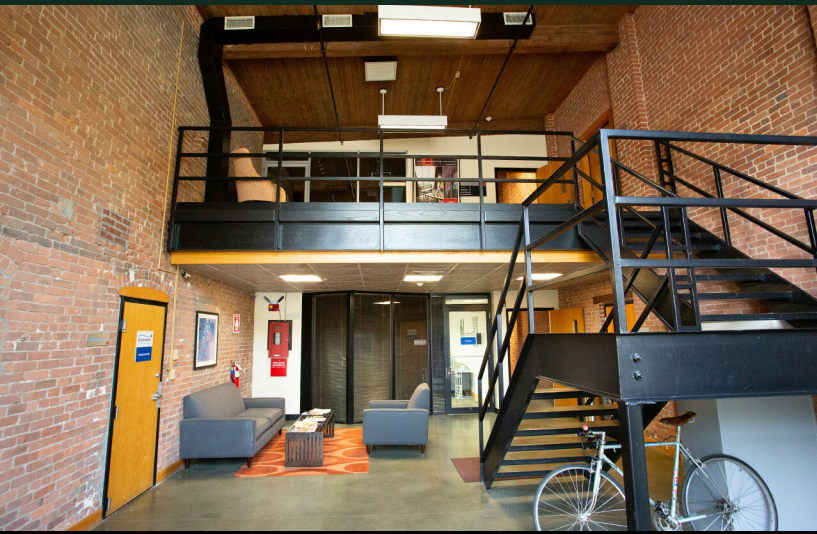


SPECIFICATIONS

- Type: 2 Story office/ R & D Building
- Year Built: 1902, renovated 1985, upgraded 2008
- Zoning: Industrial
- Construction: Brick
- Roof: Rubber membrane
- Ceiling: 14' High Bay drop ceilings
- HVAC: Rooftop units, split units, split ductless units
- Floor: VCT and carpet
- Fire Suppression: Wet sprinkler system
- Utilities: Phone, Data: Verizon, Comcast
- Gas: NSTAR (separately metered)
- Water: Municipal
- Sewer: Municipal
- Power: 1200 amp, 3 phase, 208/110 V 400 amp Kohler backup generator

MILL POND SQUARE WAS FORMERLY THE TROLLEY HOUSE FOR DOWNTOWN MAYNARD

THE PROPERTY/LOCATION



MILL POND SQUARE WAS FORMERLY THE TROLLEY HOUSE FOR DOWNTOWN MAYNARD

63 GREAT ROAD

MAYNARD, MA

**BRICK AND
BEAM SPACE**

millpondsquare

FOR LEASE

SUITE 106 . 1,600 SF

SUITE 204 . 3,408 SF



COMMERCIAL
O'BRIEN
PROPERTIES, INC

KEITH GURTLE
SENIOR CONSULTANT

978.346.3098
keith@obriencommercial.com