



1623 Chicago Drive

Wyoming, MI, 49519

Standalone industrial building featuring a newly updated showroom. Ample parking and multiple overhead doors provide convenient access for loading and unloading. Situated in a high-traffic area, ensuring excellent visibility and easy accessibility. Ideal for a variety of commercial uses with a mix of potential showroom and warehouse.

Highlights

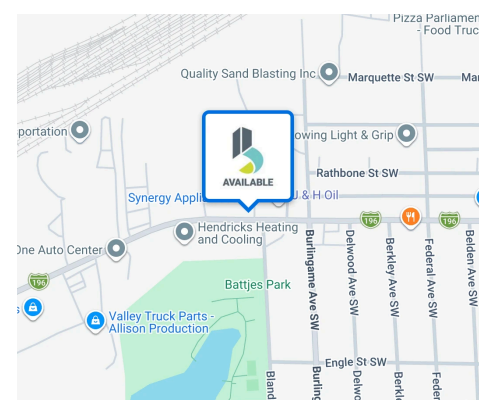
- Stand alone Industrial Building with a modernized showroom
- Former Hardware Store and Appliance Store
- Ability to be a single tenant or multi-tenant building
- Plenty of Parking

Sale Price \$1,279,290

Building Size 16,208 sqft

Price Per SF \$78.93/SF

Acreage 0.662 AC



Kevin VanHaitsma
Vice President
kvanhaitsma@bradleyco.com
c 616.308.1727

Case Overweg
Vice President
coverweg@bradleyco.com
c 616.540.4924

www.bradleyco.com

For Sale

1623 Chicago Drive , Wyoming, MI 49519



Lease Overview

Sale Price	\$1,279,290
Price Per SF	\$78.93/SF
Acreage	0.662 AC
Lease Type	NNN
Lease Expiration	September 30th, 2031
Annual Escalation	3%

Tenant VS Landlord Responsibilities

Property Taxes	Tenant
Insurance	Tenant
Utilities	Tenant
Roof & Structure	Tenant
Parking Lot	Tenant
HVAC	Tenant

Exterior Photos

1623 Chicago Drive , Wyoming, MI 49519



Interior Photos

1623 Chicago Drive , Wyoming, MI 49519



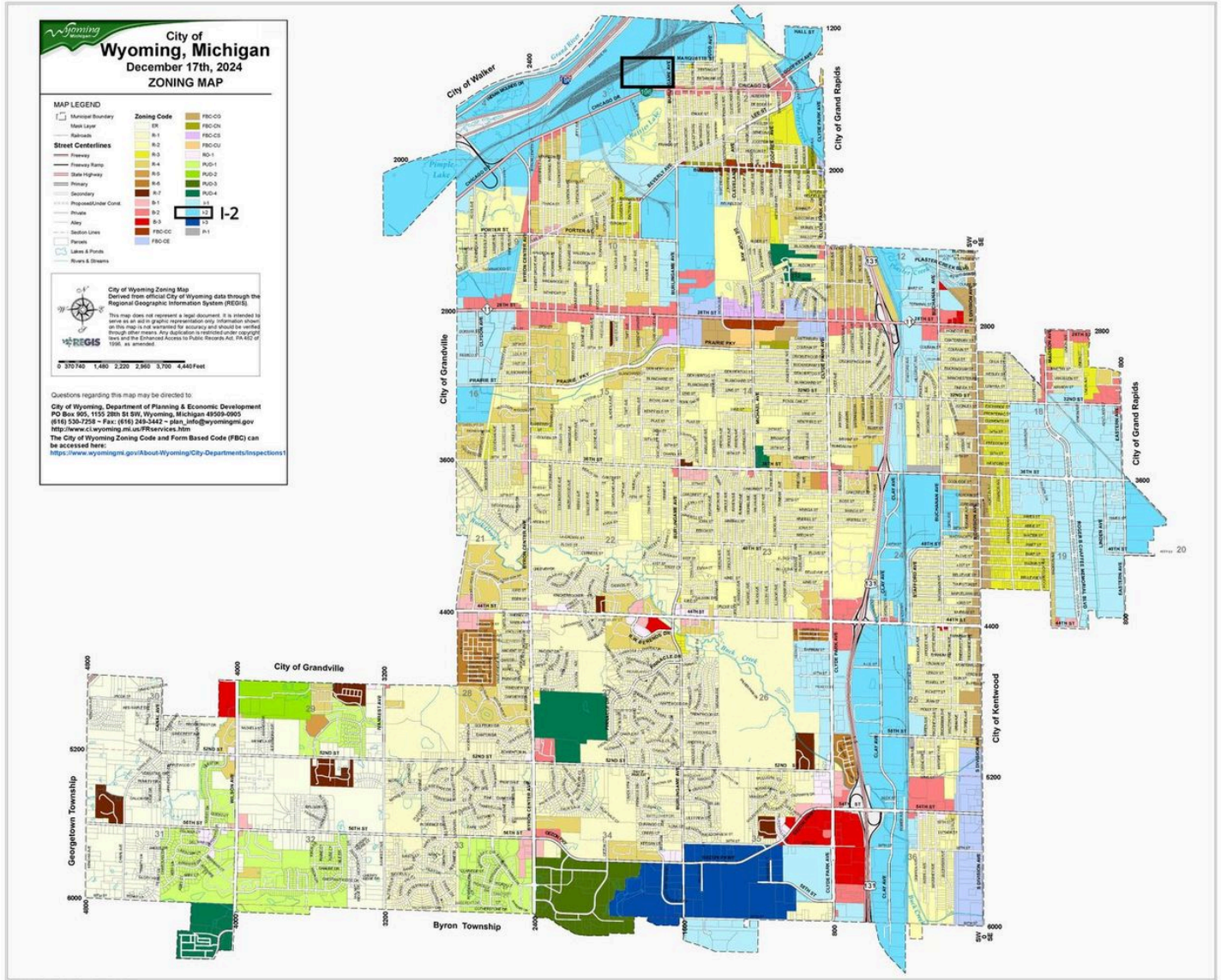
Interior Photos

1623 Chicago Drive , Wyoming, MI 49519



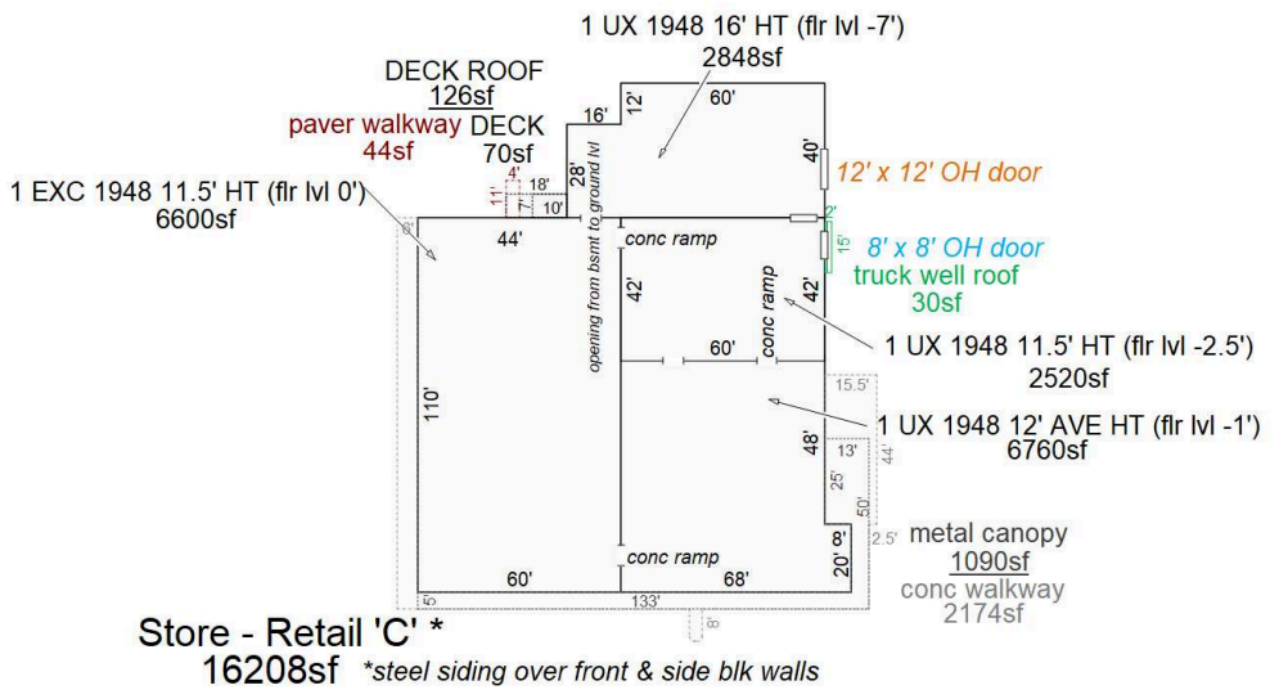
Zoning Map

1623 Chicago Drive , Wyoming, MI 49519



Floorplan

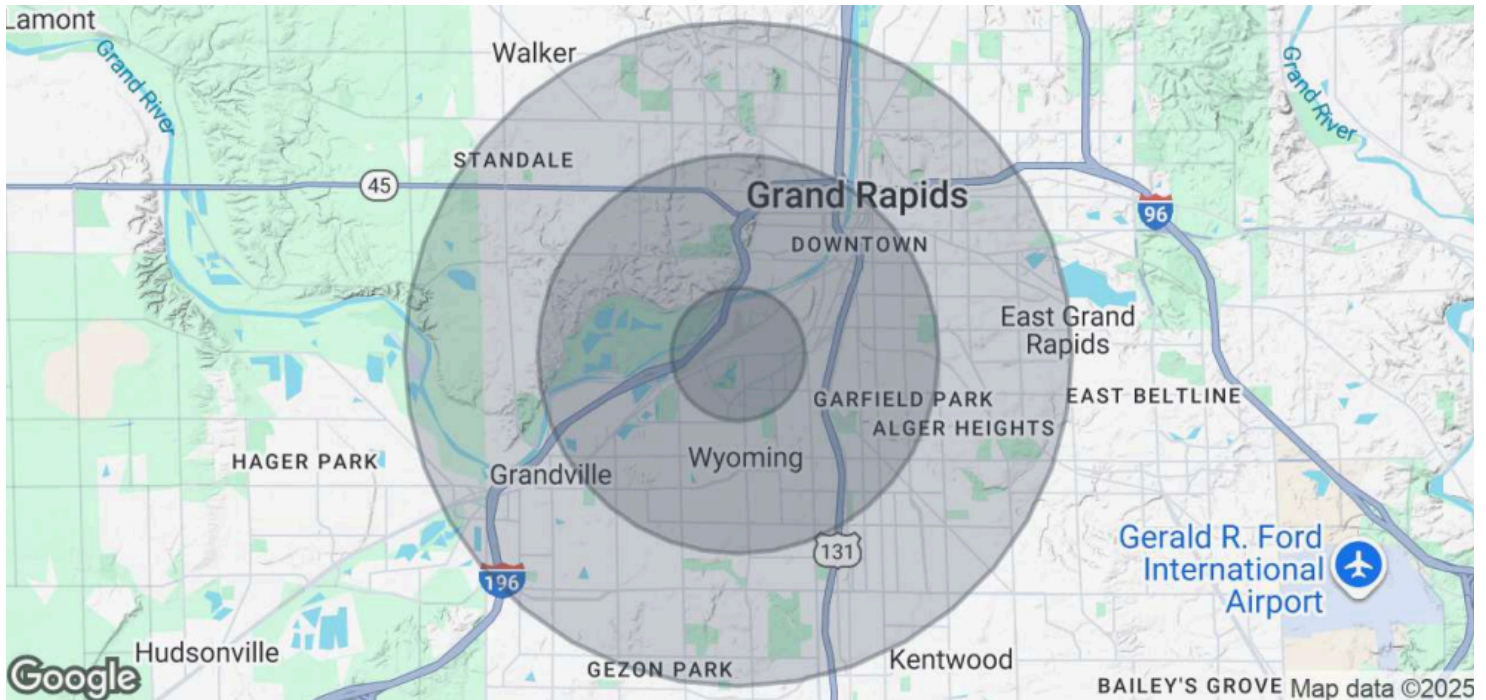
1623 Chicago Drive , Wyoming, MI 49519



Sketch by Apex Sketch

Demographics

1623 Chicago Drive , Wyoming, MI 49519



Demographics

	1 Miles	3 Miles	5 Miles
Total Population	7,495	53,213	97,753
Average Age	42	40	39
Average Age (Male)	41	38	38
Average Age (Female)	44	41	40
Total Households	2,893	19,621	35,802
# of Persons per HH	2.6	2.7	2.7
Average HH Income	\$101,467	\$111,398	\$112,872
Average House Value	\$314,150	\$344,965	\$353,560