



OFFICE FOR LEASE MID-CENTURY MODERN BUILDING

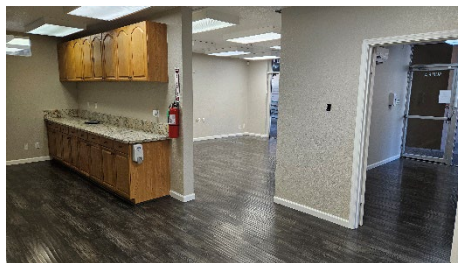
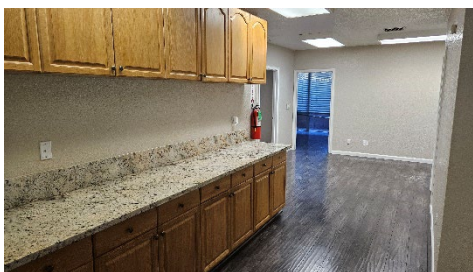
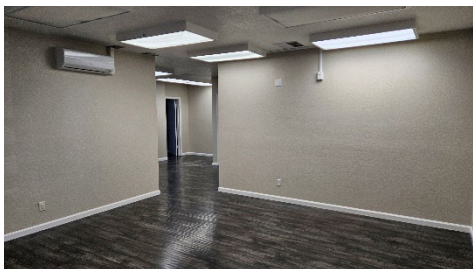
739, 1,287, & 2,026 sq ft suites

Lease Rate: \$1.63 psf

1301 K Street

Modesto, CA 95354

- Landmark office building located in Downtown Modesto
- Gated parking with 2 spaces
- Plenty of street parking
- Elevator access
- New in-suite remote controlled AC/heating units
- Immediate access to CA Highway 99 and Central Modesto
- Near coffee shop, sandwich shop, restaurants and financial institutions



PMZ
SINCE 1957

COMMERCIAL
REAL ESTATE

Josh Bower
Senior Associate
+1 209 988 8428
jbower@pmz.com
BRE#01911219

David Quiñonez
Broker
+1 209 614 5653
davidq@pmz.com
BRE#01853323

Photos

Unit E

Size:	739 SF
Lease Rate:	\$1,200.00 (\$1.63) per Month Gross
Description:	<ul style="list-style-type: none"> • Reception/admin area • 1 large private office can accommodate desk, small round table and lounge/seating area • Break room with sink and upper/lower cabinets • 1 parking space in gated parking lot for Tenants



