

CENTRAL VALLEY COOLER SPACE FOR LEASE

37,064 Square Feet (Divisible)
with Heavy Trailer Parking
Dinuba, California



1900 EAST DAVIS DRIVE, DINUBA, CALIFORNIA

- Total Available: 37,064 Square Feet (SF)
- Refrigerated Storage: 28,596 SF
- Refrigerated Dock: 2,508 SF
- Dry Storage: 5,960 SF
- +/-18'-22' Ceiling
- 8 Dock Doors
- Large Yard for Heavy Parking
- Fenced with Security-Controlled Access
- SR-99 Access
- Divisible

Scott Delphey, Founder | Food Properties Group

Lic. #01488628 | Corp. #02024720

M: 626.590.0490 | E: scott.delphey@foodpropertiesgroup.com

Matthew Delphey, CPA | Food Properties Group

Lic. #02036100 | Corp. #02024720

M: 626.716.0675 | E: matthew.delphey@foodpropertiesgroup.com

James Griffin, Director

Cushman & Wakefield

Lic. #01211790

M: 559.213.3531

E: james.griffin@cushwake.com

CENTRAL VALLEY COOLER SPACE FOR LEASE

37,064 Square Feet (Divisible)
with Heavy Trailer Parking
Dinuba, California



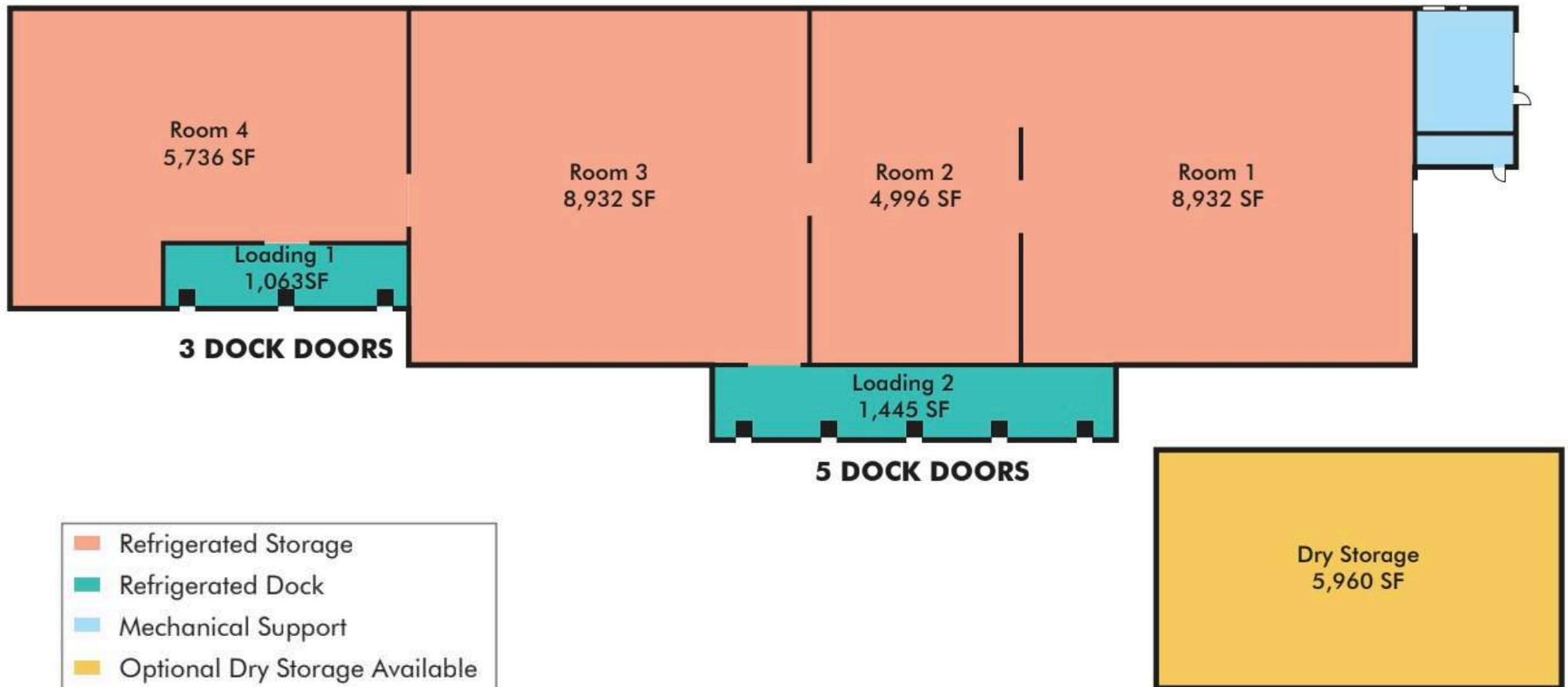
FOOD PROPERTIES
GROUP



CUSHMAN &
WAKEFIELD

SQUARE FOOTAGE ITEMIZATION

- Four (4) storage rooms (three have doors between)
- Two (2) refrigerated dock areas
- Eight (8) dock doors, all with levelers
- 36° capable
- Ammonia system
- Fully-sprinklered
- Partially racked
- Fully-fenced site with security guard gate control
- Additional trailer parking available



CENTRAL VALLEY COOLER SPACE FOR LEASE

37,064 Square Feet (Divisible)
with Heavy Trailer Parking
Dinuba, California



FOOD PROPERTIES
GROUP



CUSHMAN &
WAKEFIELD



CENTRAL VALLEY COOLER SPACE FOR LEASE

37,064 Square Feet (Divisible)
with Heavy Trailer Parking
Dinuba, California



CENTRAL VALLEY COOLER SPACE FOR LEASE

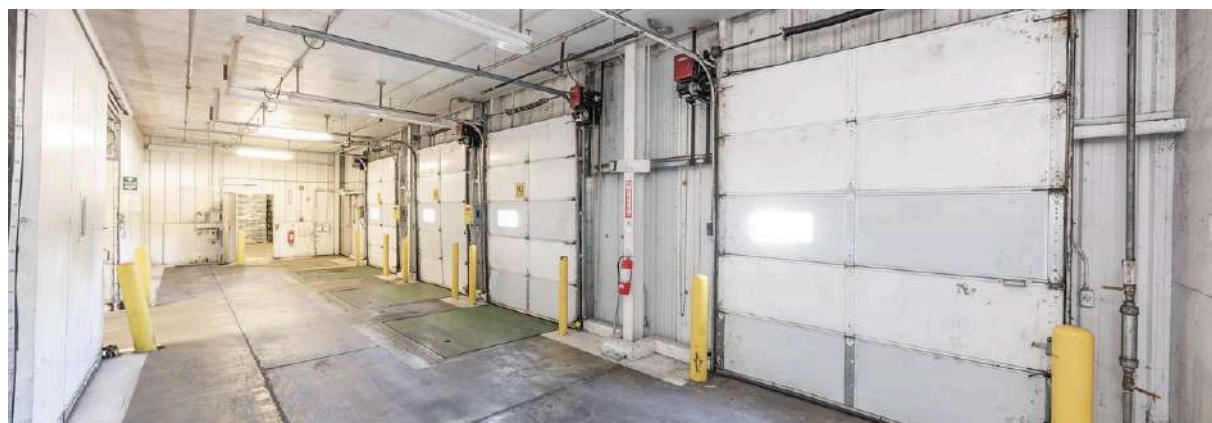
37,064 Square Feet (Divisible)
with Heavy Trailer Parking
Dinuba, California



FOOD PROPERTIES
GROUP



CUSHMAN &
WAKEFIELD



Scott Delphey, Founder | Food Properties Group

Lic. #01488628 | Corp. #02024720

M: 626.590.0490 | E: scott.delphey@foodpropertiesgroup.com

Matthew Delphey, CPA | Food Properties Group

Lic. #02036100 | Corp. #02024720

M: 626.716.0675 | E: matthew.delphey@foodpropertiesgroup.com

James Griffin, Director

Cushman & Wakefield

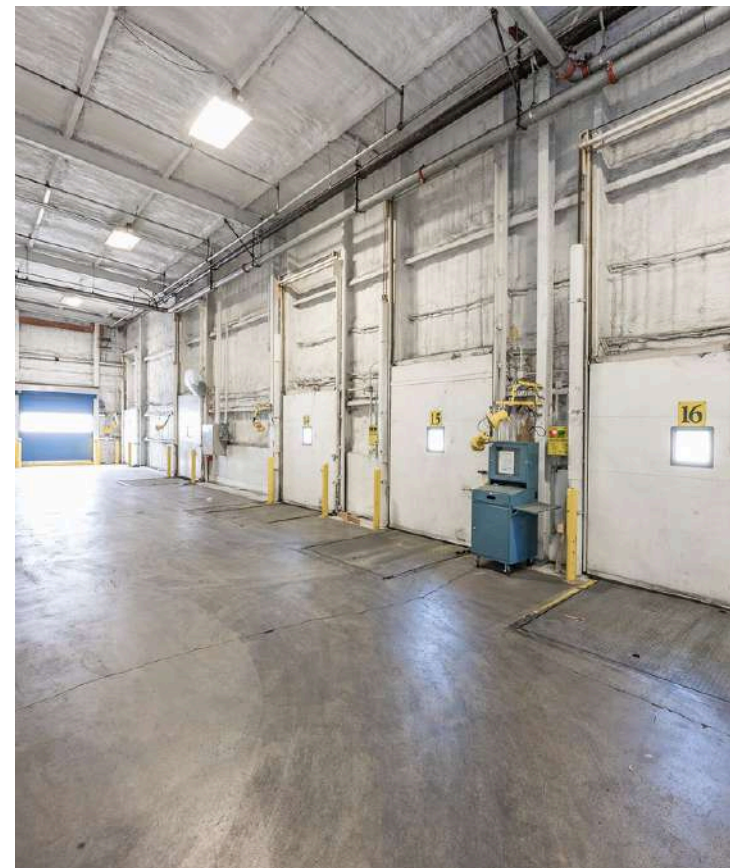
Lic. #01211790

M: 559.213.3531

E: james.griffin@cushwake.com

CENTRAL VALLEY COOLER SPACE FOR LEASE

37,064 Square Feet (Divisible)
with Heavy Trailer Parking
Dinuba, California



Scott Delphey, Founder | Food Properties Group

Lic. #01488628 | Corp. #02024720

M: 626.590.0490 | E: scott.delphey@foodpropertiesgroup.com

Matthew Delphey, CPA | Food Properties Group

Lic. #02036100 | Corp. #02024720

M: 626.716.0675 | E: matthew.delphey@foodpropertiesgroup.com

James Griffin, Director

Cushman & Wakefield

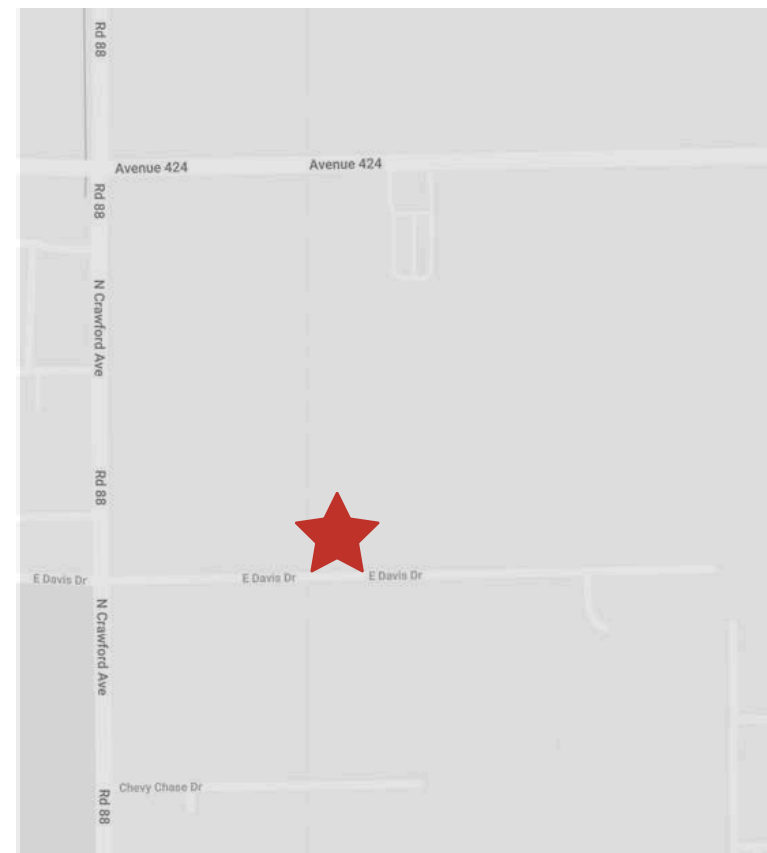
Lic. #01211790

M: 559.213.3531

E: james.griffin@cushwake.com

CENTRAL VALLEY COOLER SPACE FOR LEASE

37,064 Square Feet (Divisible)
with Heavy Trailer Parking
Dinuba, California



Scott Delphey, Founder | Food Properties Group

Lic. #01488628 | Corp. #02024720

M: 626.590.0490 | E: scott.delphey@foodpropertiesgroup.com

Matthew Delphey, CPA | Food Properties Group

Lic. #02036100 | Corp. #02024720

M: 626.716.0675 | E: matthew.delphey@foodpropertiesgroup.com

**James Griffin, Director
Cushman & Wakefield**

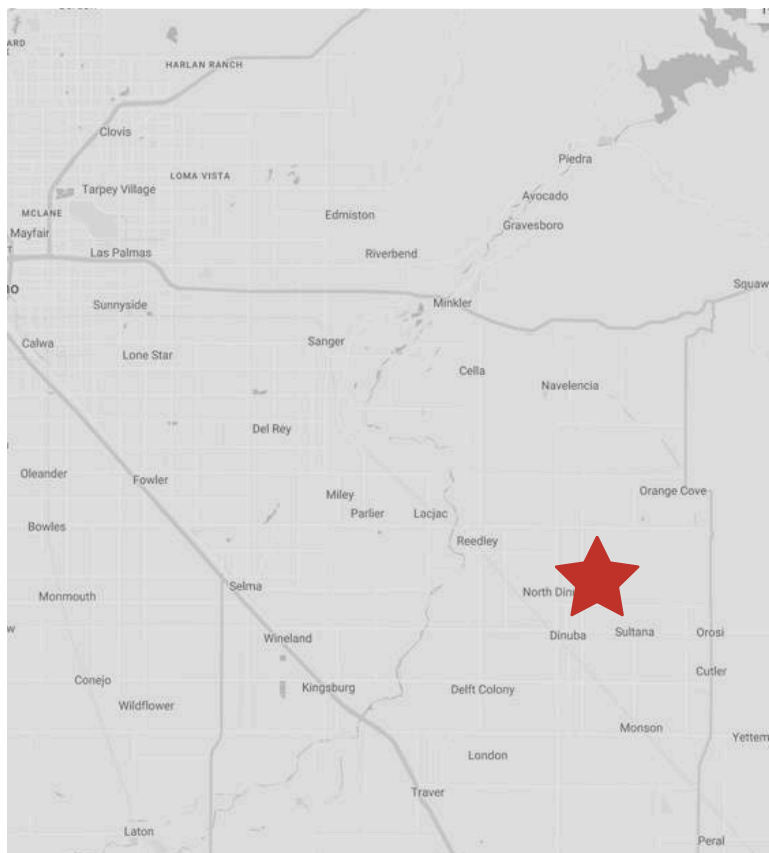
Lic. #01211790

M: 559.213.3531

E: james.griffin@cushwake.com

CENTRAL VALLEY COOLER SPACE FOR LEASE

37,064 Square Feet (Divisible)
with Heavy Trailer Parking
Dinuba, California



Scott Delphey, Founder | Food Properties Group

Lic. #01488628 | Corp. #02024720

M: 626.590.0490 | E: scott.delphey@foodpropertiesgroup.com

Matthew Delphey, CPA | Food Properties Group

Lic. #02036100 | Corp. #02024720

M: 626.716.0675 | E: matthew.delphey@foodpropertiesgroup.com

James Griffin, Director

Cushman & Wakefield

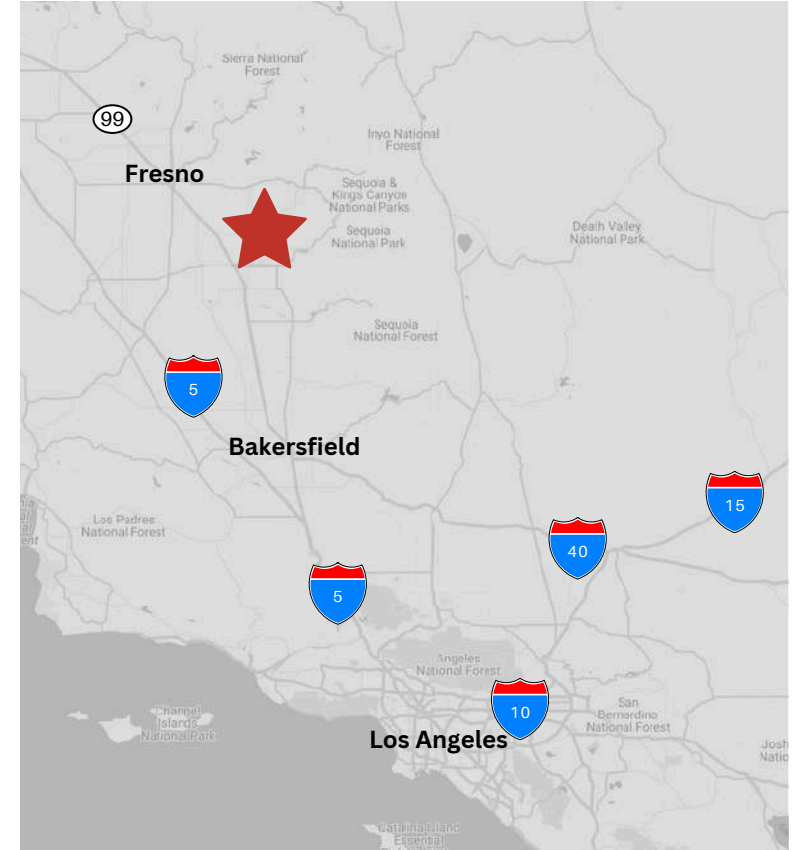
Lic. #01211790

M: 559.213.3531

E: james.griffin@cushwake.com

CENTRAL VALLEY COOLER SPACE FOR LEASE

37,064 Square Feet (Divisible)
with Heavy Trailer Parking
Dinuba, California



Scott Delphey, Founder
Food Properties Group

Lic. #01488628 | Corp. #02024720

M: 626.590.0490

E: scott.delphey@foodpropertiesgroup.com

DISCLAIMER: © 2024 Food Properties Group Inc. This information has been obtained from sources believed reliable. We have not verified it and make no guarantee, warranty or representation about it. Any projections, opinions, assumptions or estimates used are for example only and do not represent the current or future performance of the property. You and your advisors should conduct a careful, independent investigation of the property to determine to your satisfaction the suitability of the property for your needs.