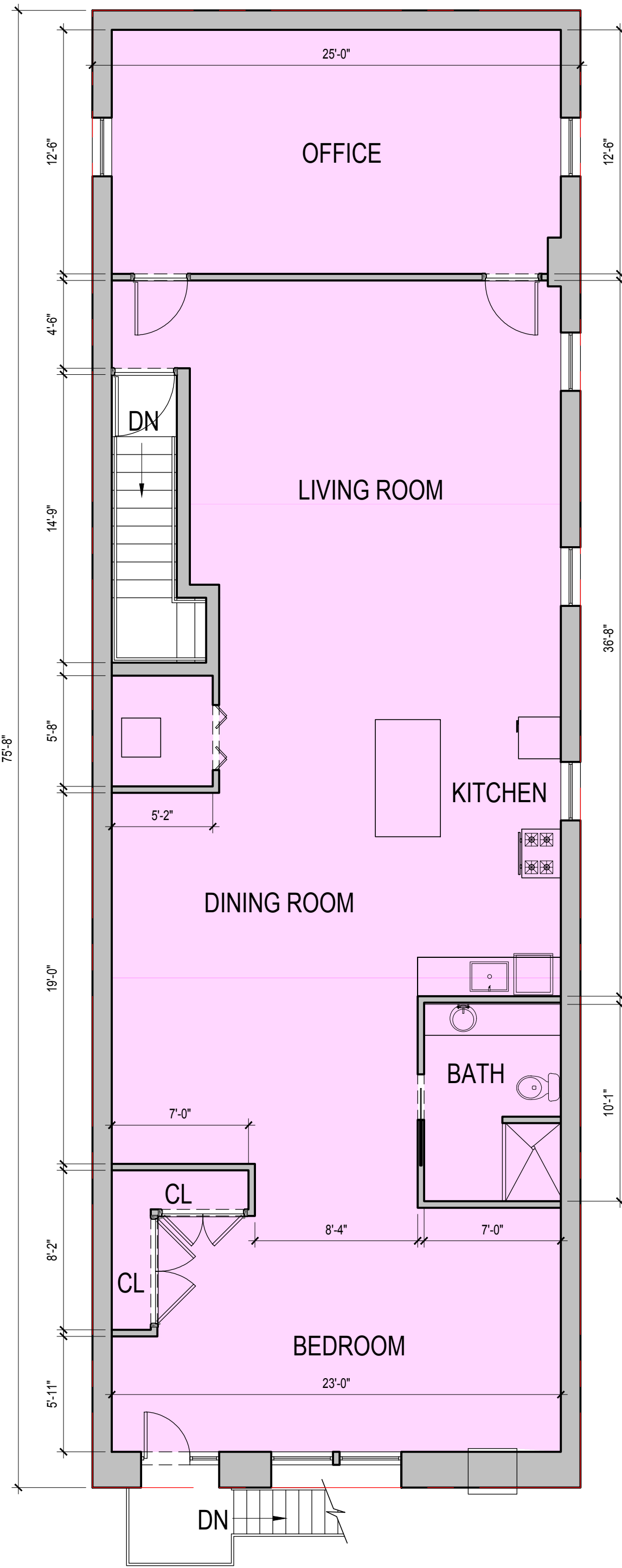
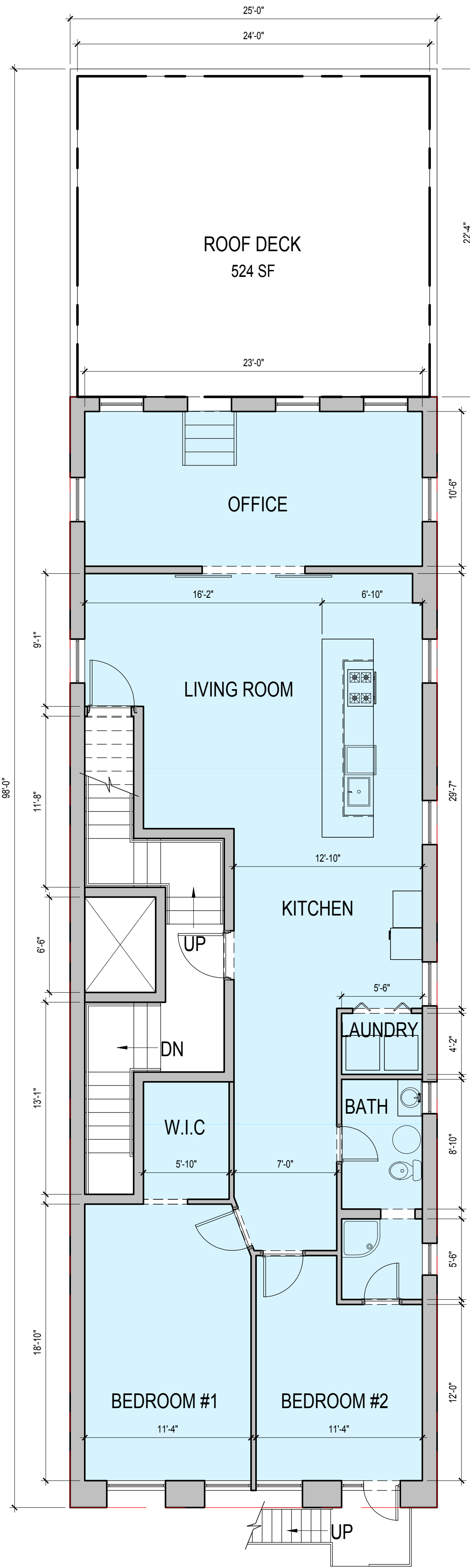
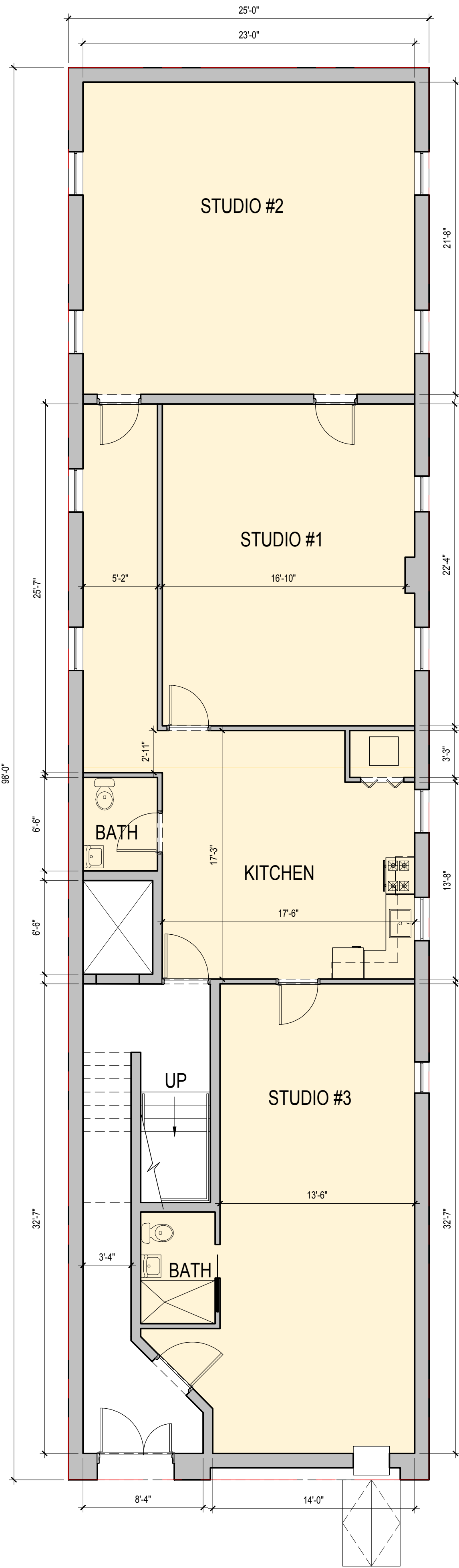


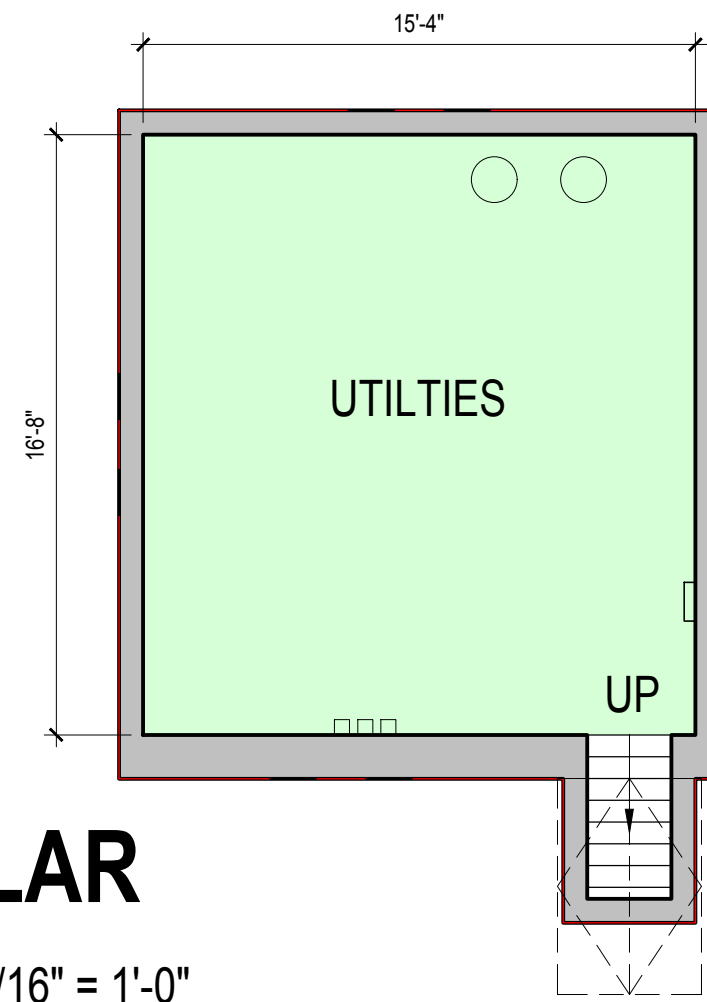


NORTH



CELLAR

SCALE: 3/16" = 1'-0"



AREA TAKEOFF (GROSS & NET)

TOTAL AREA		GROSS	NET	LOSS FACTOR
		6556 SF	5062 SF	23%
LOCATION		GROSS	NET	LOSS FACTOR
1ST FLOOR		2450 SF	1852 SF	24%
2ND FLOOR		1891 SF	1391 SF	26%
3RD FLOOR		1891 SF	1563 SF	17%
CELLAR		324 SF	256 SF	21%

LEGEND

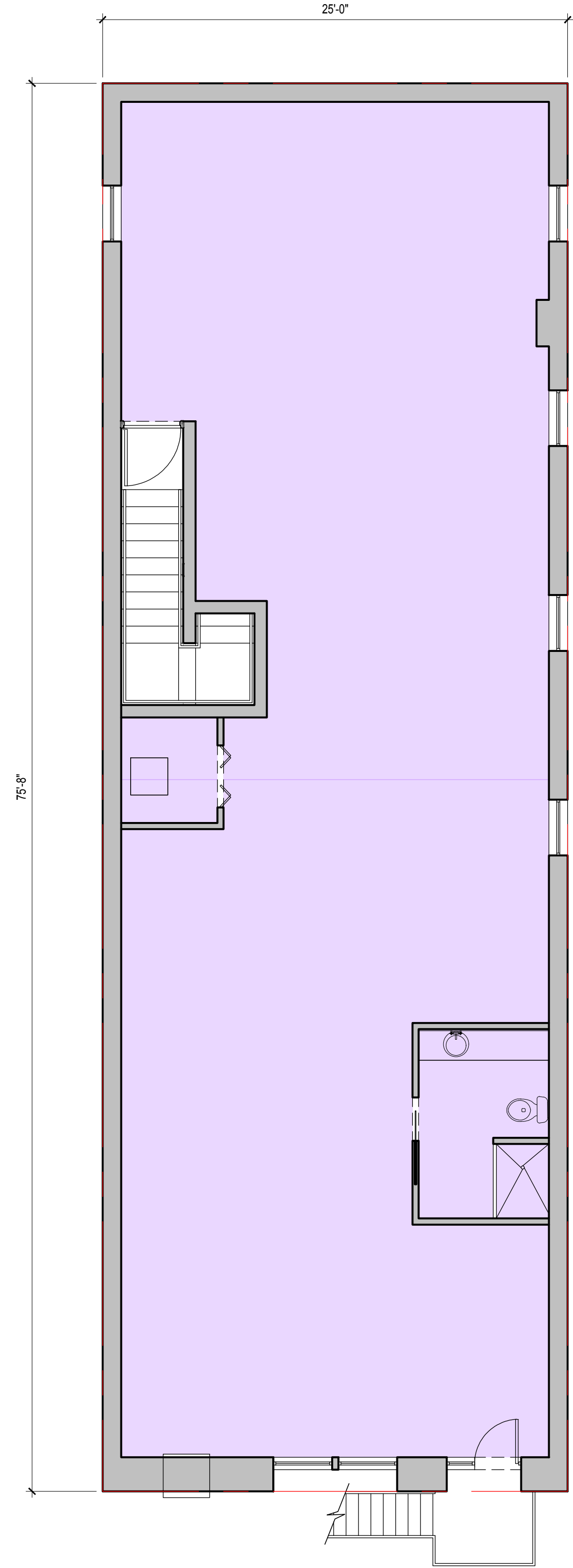
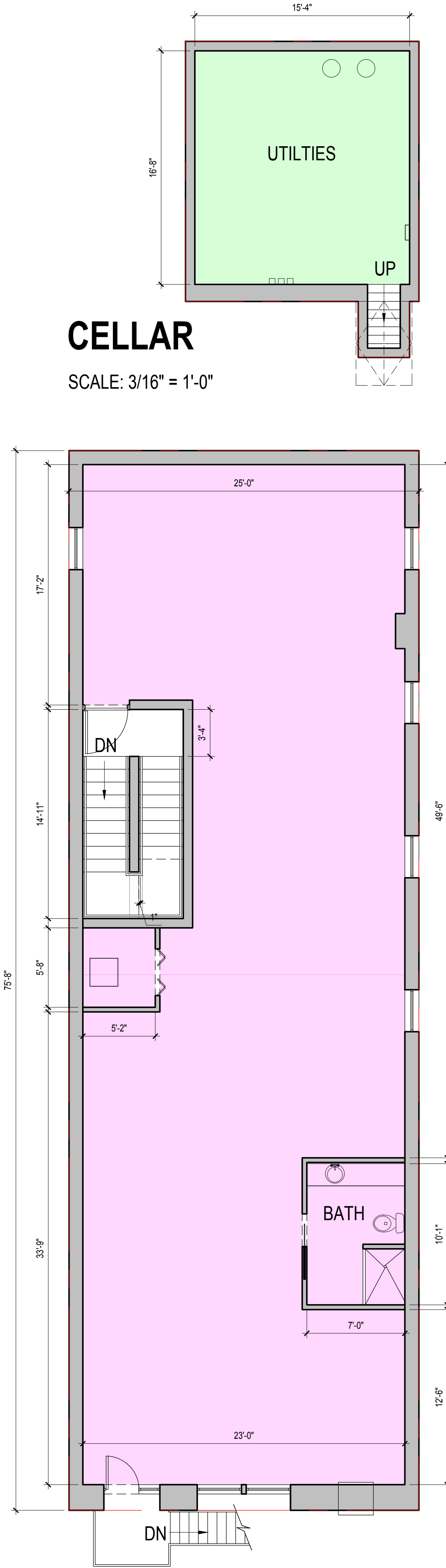
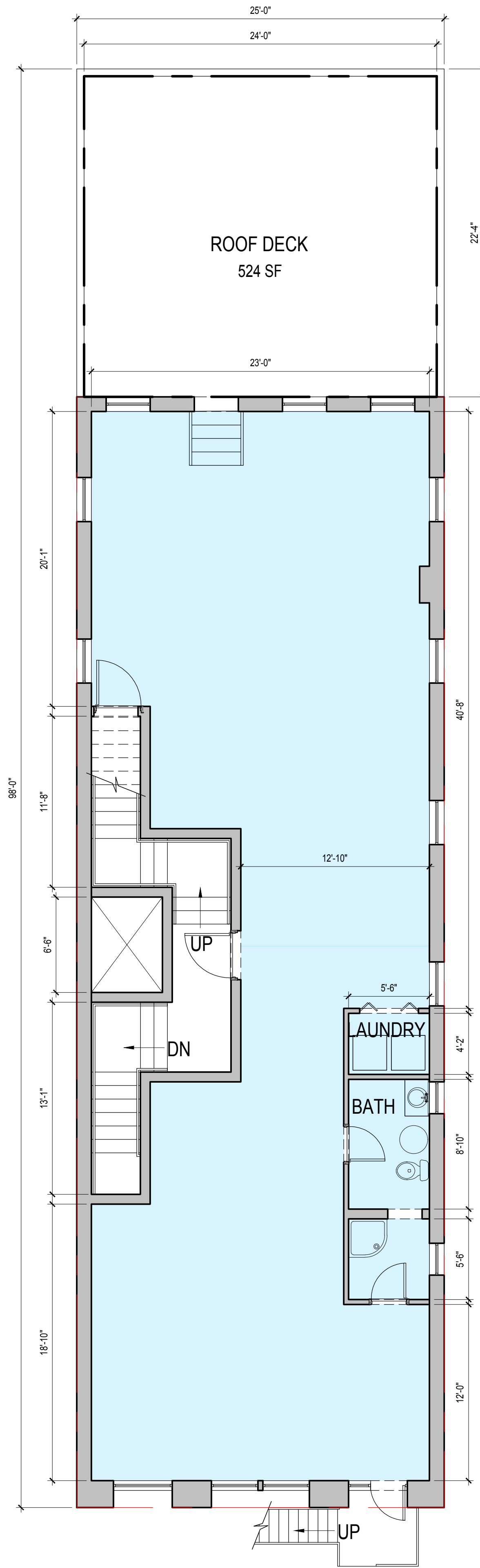
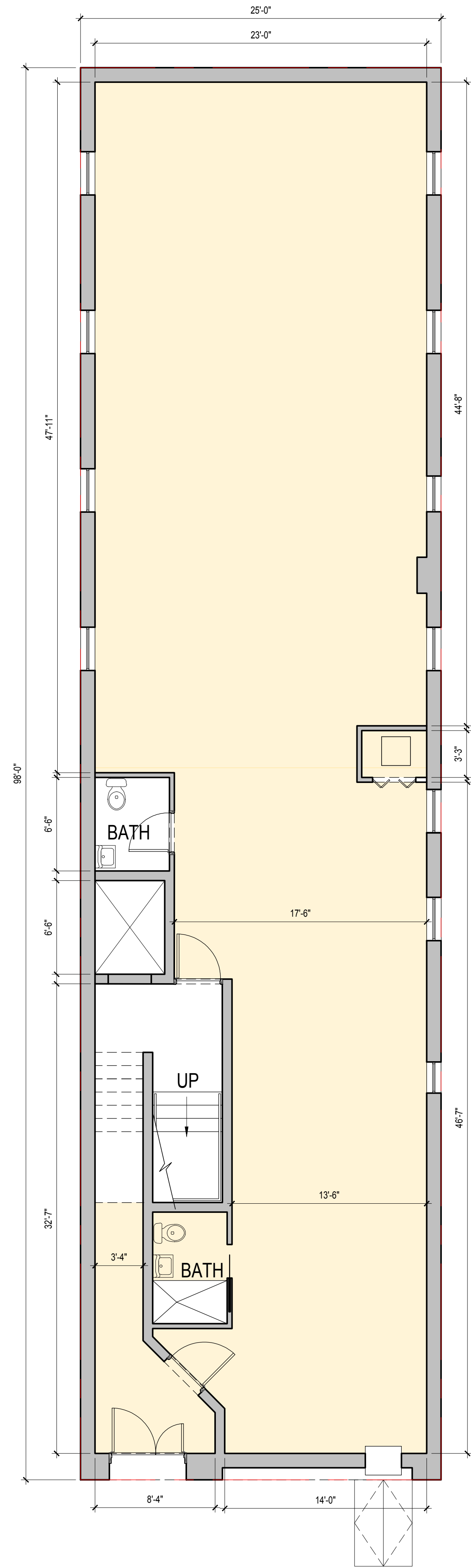
- EXISTING BUILDING
- GROSS AREA
- NET AREA (SEE ABOVE)

A1.11.1

[EXISTING]
CELLAR - 3RD FLOOR
SCALE: 3/16" = 1'-0"
196 MORGAN ST
JERSEY CITY, NJ
ISSUE DATE: 06/17/2025

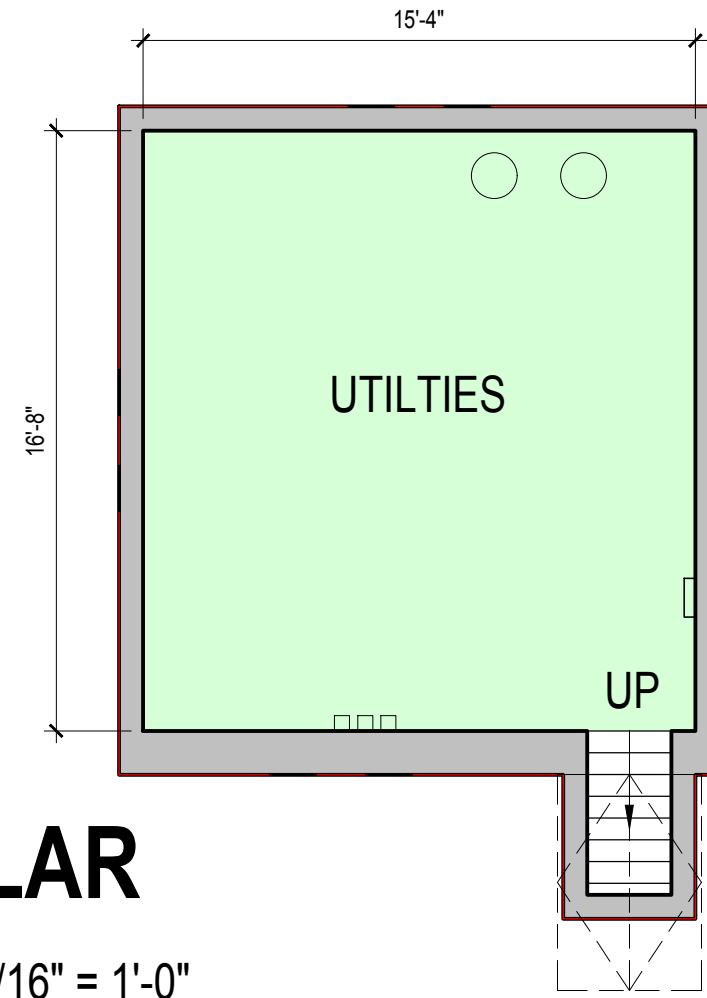
AREA TAKEOFF (GROSS & NET)

TOTAL AREA		GROSS	NET	LOSS FACTOR
		8447 SF	6707 SF	21%
LOCATION		GROSS	NET	LOSS FACTOR
<div></div>	1ST FLOOR	2450 SF	1954 SF	20%
<div></div>	2ND FLOOR	1891 SF	1415 SF	25%
<div></div>	3RD FLOOR	1891 SF	1522 SF	20%
<div></div>	4TH FLOOR	1891 SF	1560 SF	18%
<div></div>	CELLAR	324 SF	256 SF	21%



CELLAR

SCALE: 3/16" = 1'-0"



LEGEND

- EXISTING BUILDING
- GROSS AREA
- NET AREA (SEE ABOVE)

A1.11.2

[4TH FLOOR ALT]
CELLAR - 4TH FLOOR
SCALE: 3/16" = 1'-0"
196 MORGAN ST
JERSEY CITY, NJ
ISSUE DATE: 06/17/2025