

FOR LEASE | ±95,348 SF

Colliers

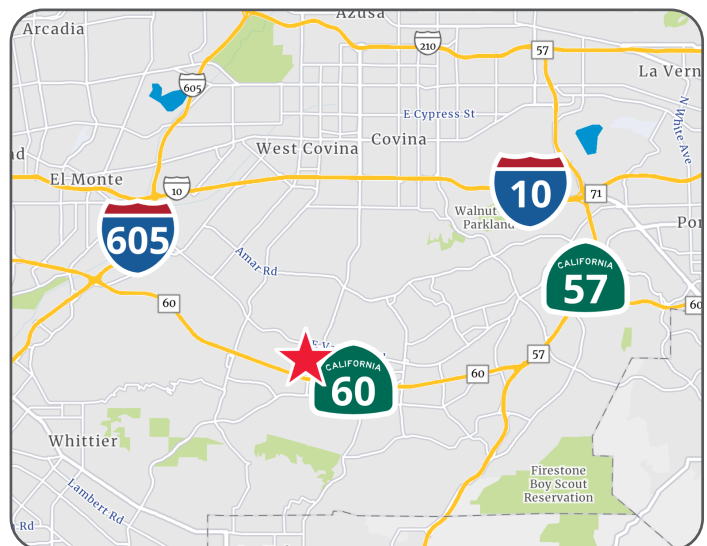
929-930 SOUTH AZUSA AVENUE

CITY OF INDUSTRY, CA 901748



Building Amenities:

- > ±95,348 SF (Divisible)
- > ±750 SF of Office
- > 26 Dock High Loading Positions
- > 2 Ground Level Doors
- > ESFR Sprinkler System
- > Excellent Central City of Industry Location
- > Immediate Access to Pomona (60) Freeway Via Azusa Avenue



TONY T. PHU

LICENSE NO. 01129178

626 283 4560

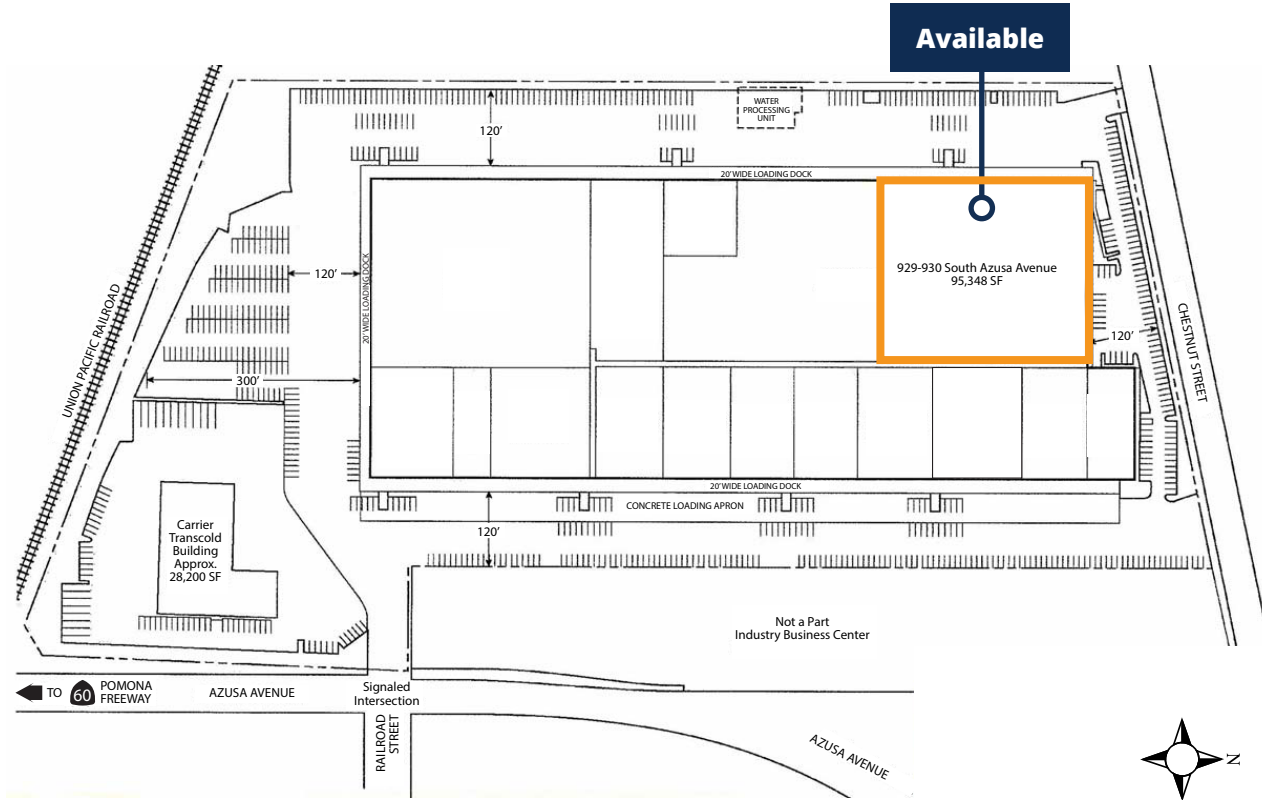
tony.phu@colliers.com

COLLIERS INTERNATIONAL
17800 Castleton Street, Suite 495
City of Industry, CA 91748
www.colliers.com

FOR LEASE | ±95,348 SF



929-930 SOUTH AZUSA AVENUE CITY OF INDUSTRY, CA 91748



TONY T. PHU
LICENSE NO. 01129178
626 283 4560
tony.phu@colliers.com

COLLIERS INTERNATIONAL
17800 Castleton Street, Suite 495
City of Industry, CA 91748
www.colliers.com