

915 Pennsylvania Avenue, Trenton, NJ



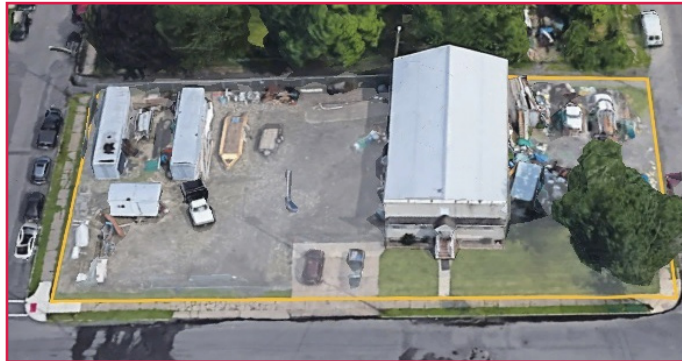
This well maintained 3,200 sq.ft Office-Flex property is located on a spacious .46 acre lot with land area for parking, vehicle storage and possible building expansion. Located in the Trenton "MU" Mixed Use zoning district offering a wide range of permitted uses including office, light industrial, commercial, warehousing, medical, retail and residential. This property is ideal for a business needing off street parking, contractors/service companies, light manufacturing or fabrication.

Features:

- Built in 1950 and renovated in 2006 with the office area substantially upgraded.
- 1,200 sq. ft of office area 2,000 sq. ft. of open storage-manufacturing area.
- Building is masonry construction with steel trusses and a pitched metal roof
- Ceiling heights range from 10'-16'
- Loading: 2 drive-in doors
- Large, fenced yard
- Easy access to several road networks



Information contained herein has been obtained from sources deemed reliable and is subject to errors and omissions.



For Information Contact

Michael Briehtler

609.658.6423

MichaelBriehtler@kwCommercial.com

Office ■ Industrial ■ Warehouse
Research ■ Medical ■ Land ■ Retail
Investments ■ Development

TO: