

FOR SALE

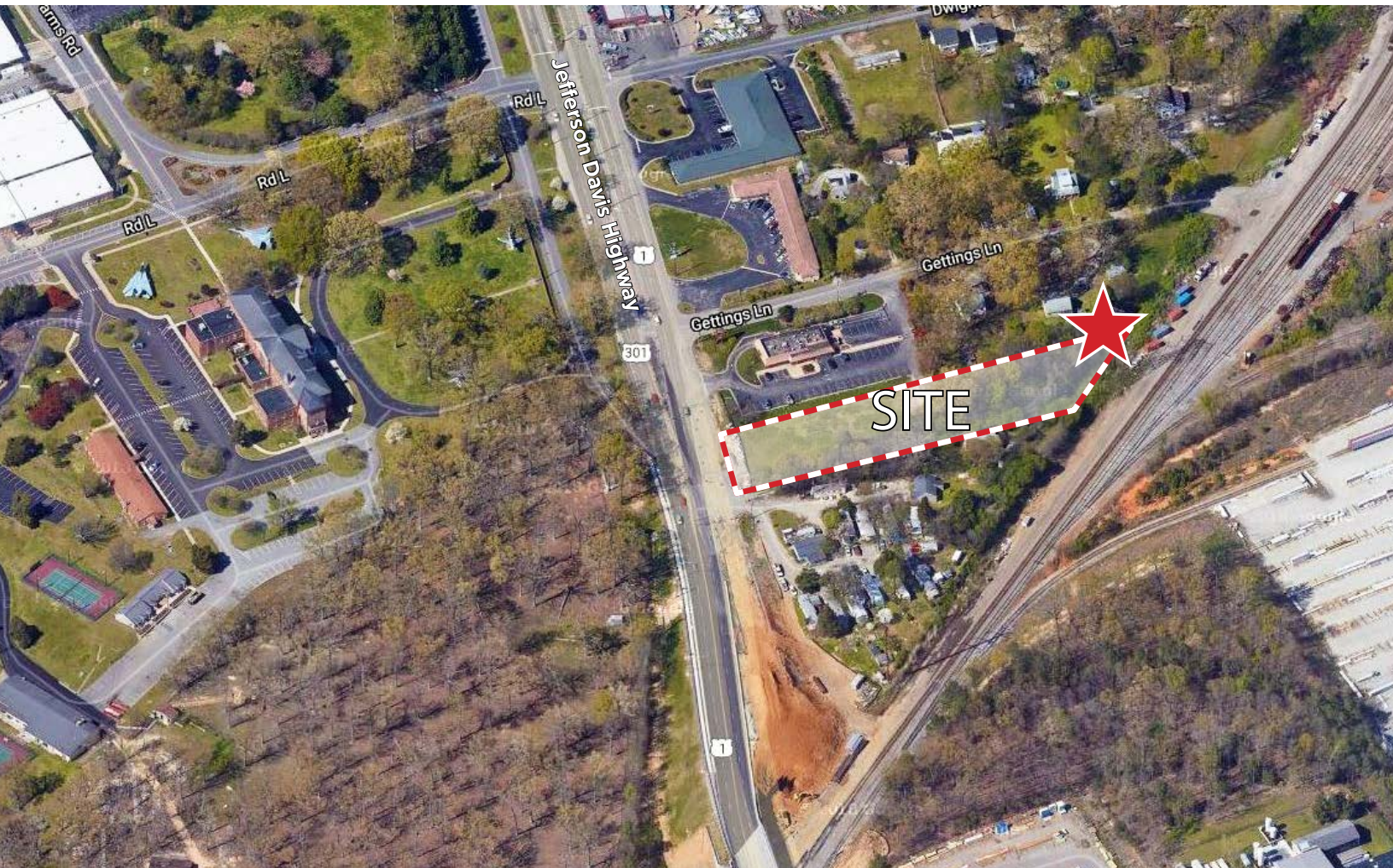
FLEXIBLE ZONING

Urban Land

8211 Jefferson Davis Highway | Richmond, VA 23237



COMMONWEALTH
COMMERCIAL
Comprehensive Property Solutions



PROPERTY HIGHLIGHTS

- › 1.156± acres
- › Flexible C-5 Zoning
- › Close proximity to Interstate-95 on busy Jefferson-Davis Highway
- › Traffic count: 21,200± VPD
- › Sale Price: \$525,000

DEMOGRAPHICS	1 MILE	3 MILE	5 MILE
TOTAL POPULATION	2,770	39,313	100,015
AVERAGE HH INCOME	\$60,832	\$88,876	\$88,499
DAYTIME EMPLOYEES	4,525	11,627	34,042

FOR MORE INFORMATION:

JIM MCVEY

Senior Vice President | Partner
804-433-1824
jmcvey@commonwealthcommercial.com

MICHAEL MORRIS

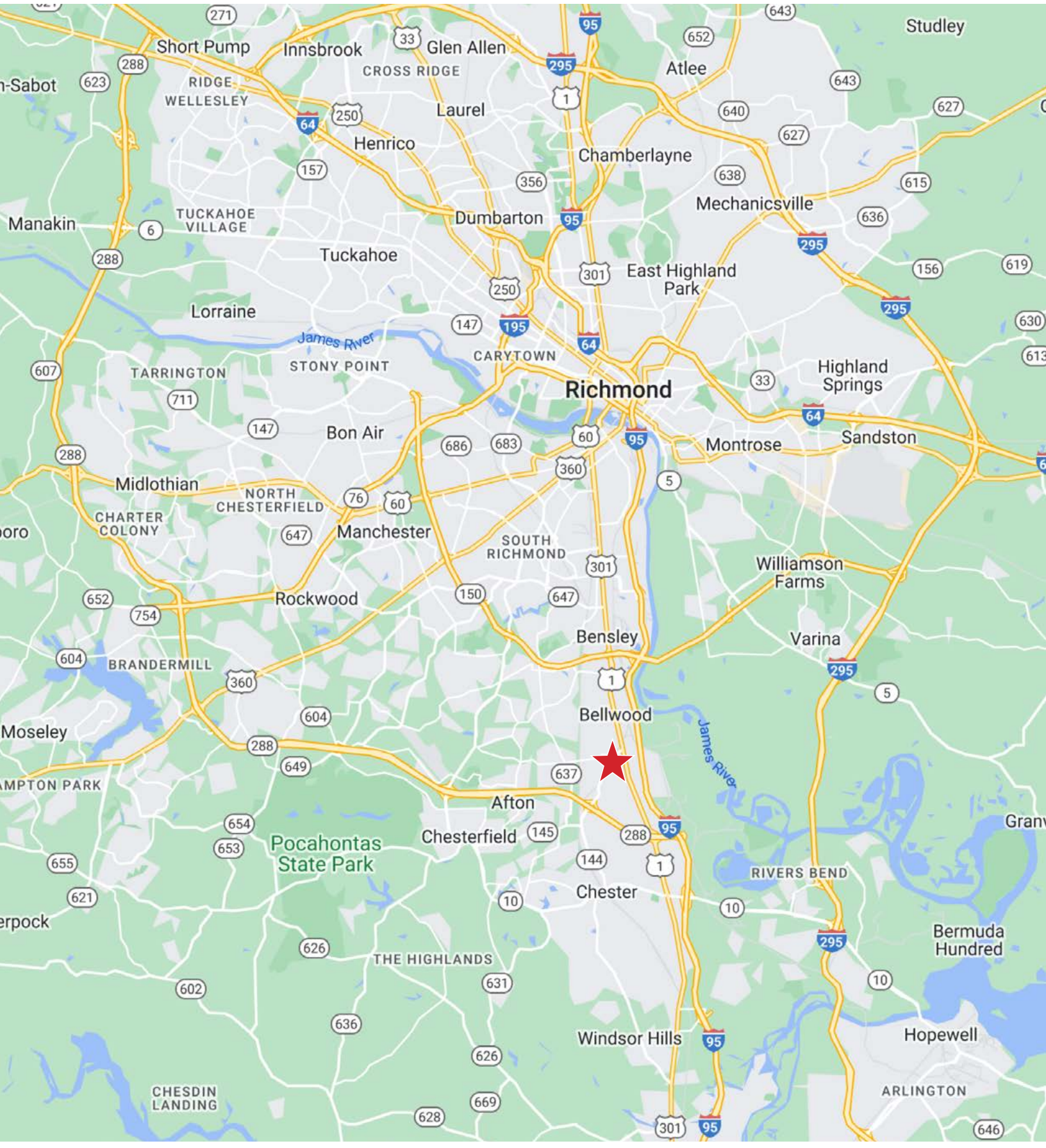
First Vice President
804-793-0053
mmorris@commonwealthcommercial.com

TODD BUTTNER

Senior Associate
804-793-0059
tbuttner@commonwealthcommercial.com

Commonwealth Commercial Partners, LLC represents the Owner of this property. Information contained herein is deemed reliable but is not guaranteed.

PROXIMITY MAP



FOR SALE | 8211 JEFFERSON DAVIS HIGHWAY | RICHMOND, VA 23237