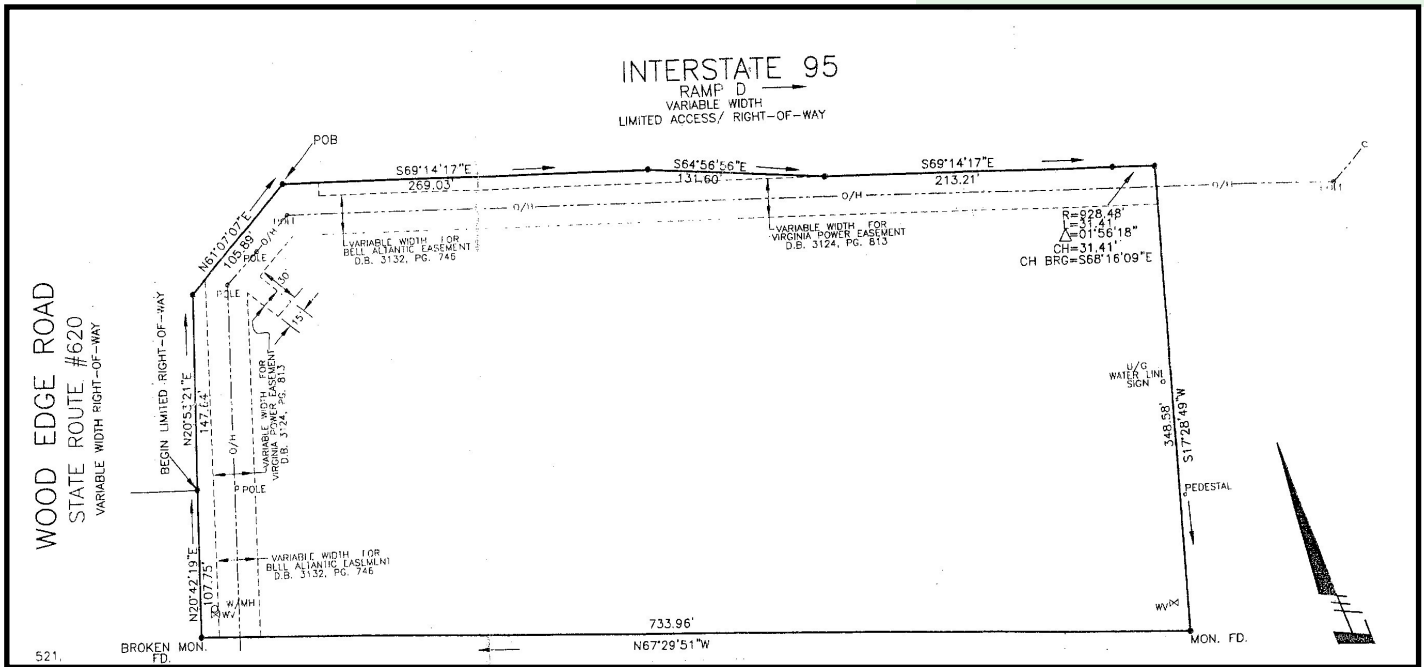


15701 Woods Edge Road

Chesterfield, VA

For Sale



Ideal for hotel, restaurant and other development

Features

- Lot size —5.63 +/- acres
- Easy on/off access to I-95
- Traffic count—I-95 is 100,000 MPSI estimate
- Conveniently located near McDonalds, hotels, convenience stores, automobile dealerships and industrial area.
- **Sale price \$1,600,000**



Specter

Properties, Inc.

P.O. Box 2455
Chesterfield, VA 23832
(804) 777-7070

Principal Broker

Mark B. Specter

mspecter@specterproperties.com

Associate Broker

Kevin Y. Specter

kspecter@specterproperties.com

All information furnished to Specter Properties, Inc. is from sources judged to be reliable. However, no warranty or representation is made as to its accuracy or completeness. This applies to all pages within this document.