

NORTH SCOTTSDALE CORPORATE CENTER

**CORNER SUITE OF APPROXIMATELY 1,768 RSF
NOW AVAILABLE FOR LEASE**



**SMALLER SUITE OF
1,768 RSF AVAILABLE**

6910 E. Chauncey Lane

Located just east of Scottsdale
Road and South of Mayo Blvd.
in Phoenix, Arizona 85054

- **HARD TO FIND SMALLER SUITE OF 1,768 RSF NOW AVAILABLE**
- Beautiful two (2) story, elevator served office building located at Chauncey Ranch with numerous local amenities on Mayo Blvd. and Scottsdale Road;
- Excellent North Scottsdale location with great accessibility to the Loop 101 Freeway;



For Additional Information, contact:

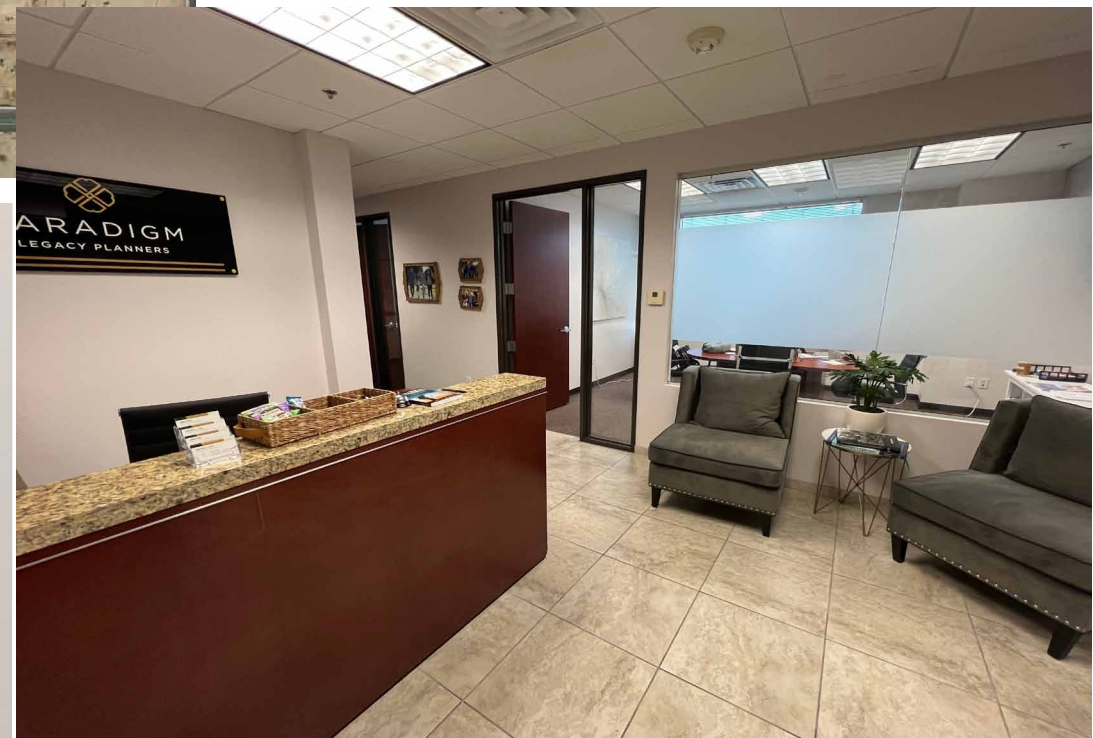
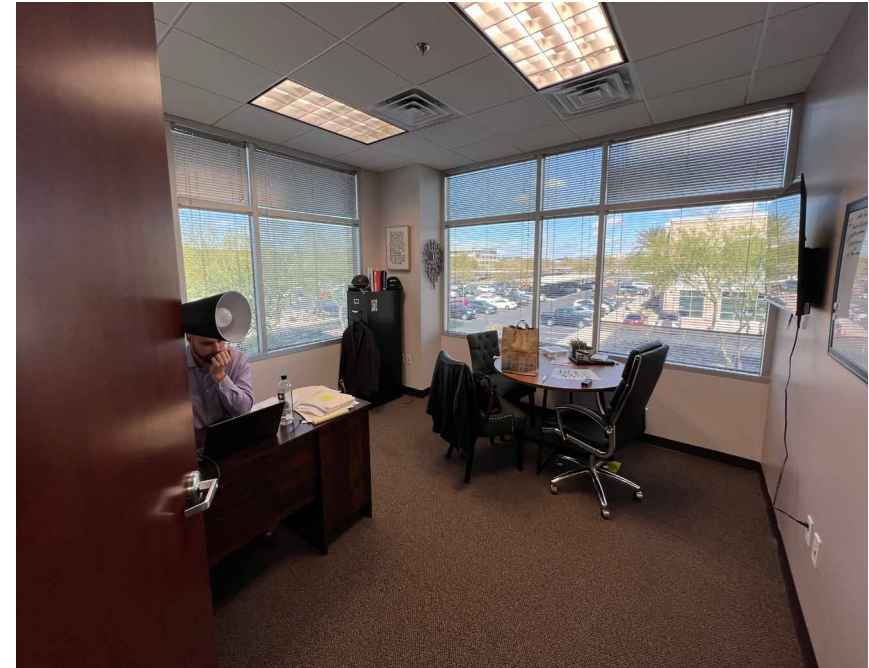
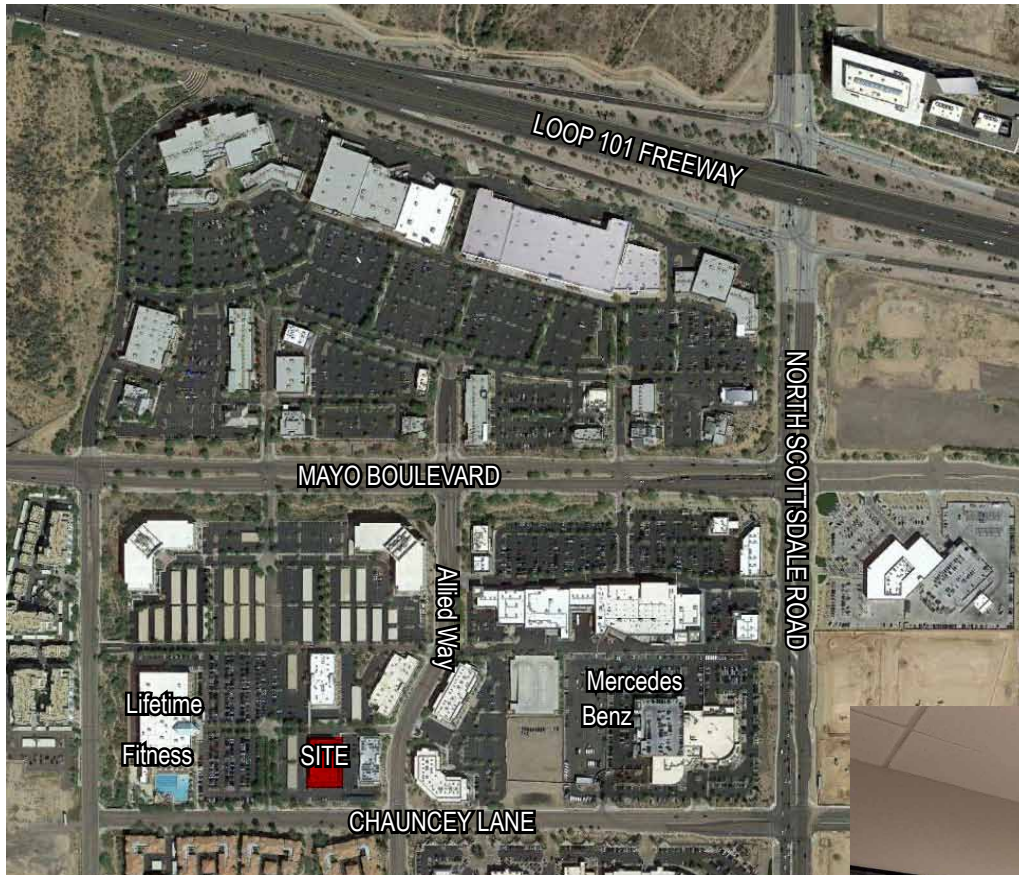
Francis J. Marotta

MarCor Commercial Real Estate Services

9383 E. Bahia Drive, Ste. 150; Scottsdale, AZ 85260

Email: fmarotta@marcorcre.com

(480)607-9997



NORTH SCOTTSDALE CORPORATE CENTER

Smaller Suite - AVAILABLE FOR LEASE

6910 E. Chauncey Lane; Phoenix, Arizona

Total SF and Location: Approximately 30,000 rentable square feet of office space in a two (2) story, elevator served office building.

| | | |
|------------------|----------------|-----------------------|
| Available Space: | <u>SUITE #</u> | <u>SQUARE FOOTAGE</u> |
| | 205 | 1,768 |

Zoning: I-1, City of Scottsdale

Lease Rate: \$27.50 per square foot.

Lease Services: Full Service

Tenant Improvements: Suite built out to attached floorplan.

Parking: 4.6 / 1,000 overall parking ratio with covered, canopy parking available.

- ***LAST SUITE OF 1,768 RSF IMMEDIATELY AVAILABLE***
- *Located at the Mayo / 101 Freeway intersection*
- Great Corner Suite of approximately 1,768 RSF with 4 offices, conference room, kitchen, open areas and a server room
- *Located withing ½ mile of the Loop 101 freeway*
- ***ALL OFFICES LOCATED ON GLASS***
- *Walking distance to Lifetime Fitness and Whole Foods and numerous restaurants and amenities*

For Additional Information, Contact:

Francis J. Marotta
480-607-0320

MarCor Commercial Real Estate Services

9383 E. Bahia Drive, Ste. 150
Scottsdale, Arizona 85260

Phone 480-607-9997

Fax 480-452-0350

The MarCor logo features the word "MarCor" in a stylized, italicized serif font. The "Mar" is in black and the "Cor" is in red. The logo is set against a background of two solid red rectangular blocks, one above and one below the text.

THE INFORMATION ABOVE WAS FURNISHED BY THE OWNER OR OBTAINED FROM SOURCES DEEMED TO BE RELIABLE. HOWEVER NO WARRANTIES OR REPRESENTATIONS, EITHER EXPRESSED OR IMPLIED IS MADE AS TO THE ACCURACY THEREOF AND SAME IS SUBMITTED SUBJECT TO ERRORS, OMISSIONS, CHANGE OF RENTAL OR OTHER CONDITIONS, PRIOR SALE, LEASE OR FINANCING OR WITHDRAWAL WITHOUT NOTICE. NO LIABILITY OF ANY KIND SHALL BE IMPOSED ON THE BROKER HEREIN.

SUITE 205 - Approximately 1,768 RSF

