

333 Gellert Blvd.

Daly City, CA 94015

PERFECT PENINSULA OFFICE BUILDING

FRANK VELLA

Broker Associate

frank@starboardcre.com

CELL: 650.464.8062

OFC. PHONE: 415.765.6900

BRE # 01104977

[View Online](#)



STARBOARD CRE
LOCAL • INDEPENDENT • ENTREPRENEURIAL

STARBOARDCRE.COM
OFC. PHONE 415.765.6900
49 POWELL STREET, SAN FRANCISCO, CA 94102

BUILDING SIZE: ± 61,557 SF SF

YEAR BUILT: 1977

ZONING: C2

TERM: 3 - 5 YEARS

NO OF FLOORS: 2

HIGHLIGHTS

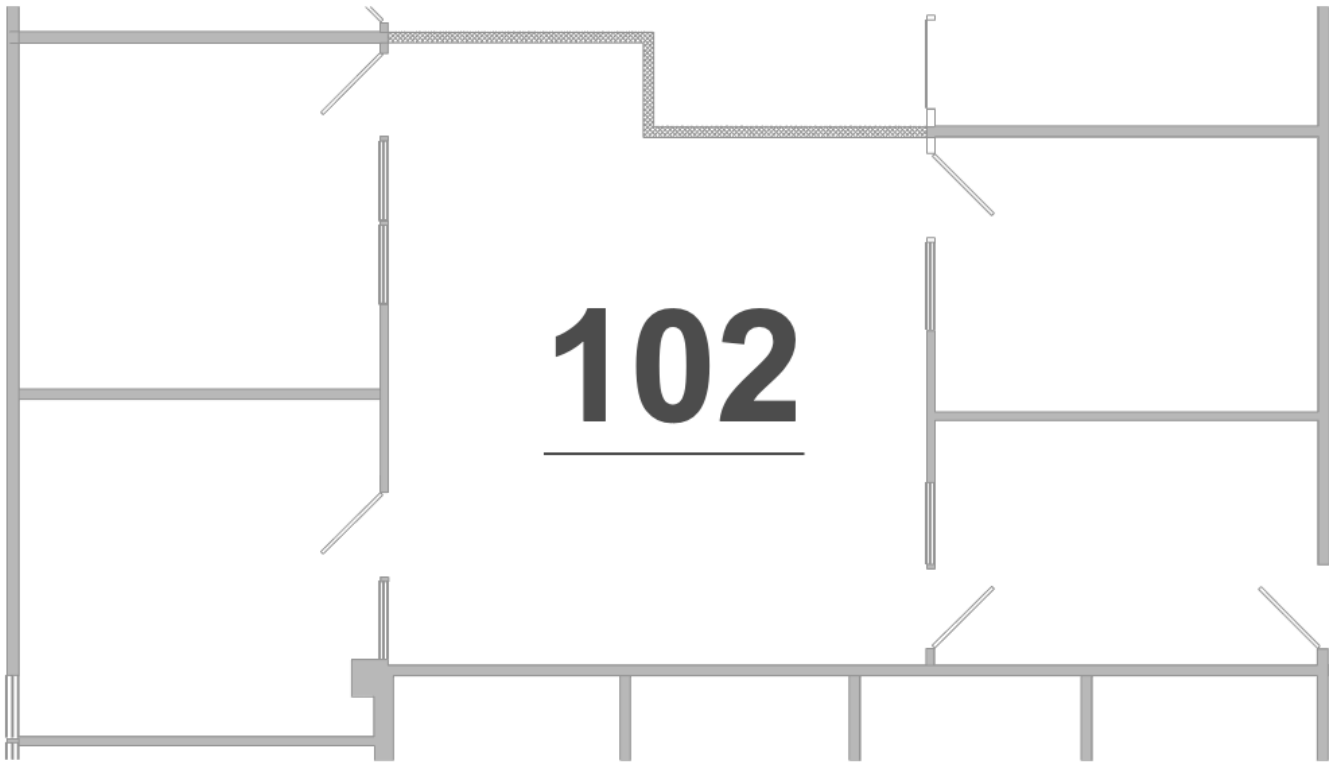
- Strategically located close to Highway 280, BART, and SamTrans
- General office Space. Great for attorney, tech or various other office uses.
- Medical use allowed
- Beautifully landscaped atrium
- Tenant conference room
- 1,000 to 3,000 Sq. ft. suites available



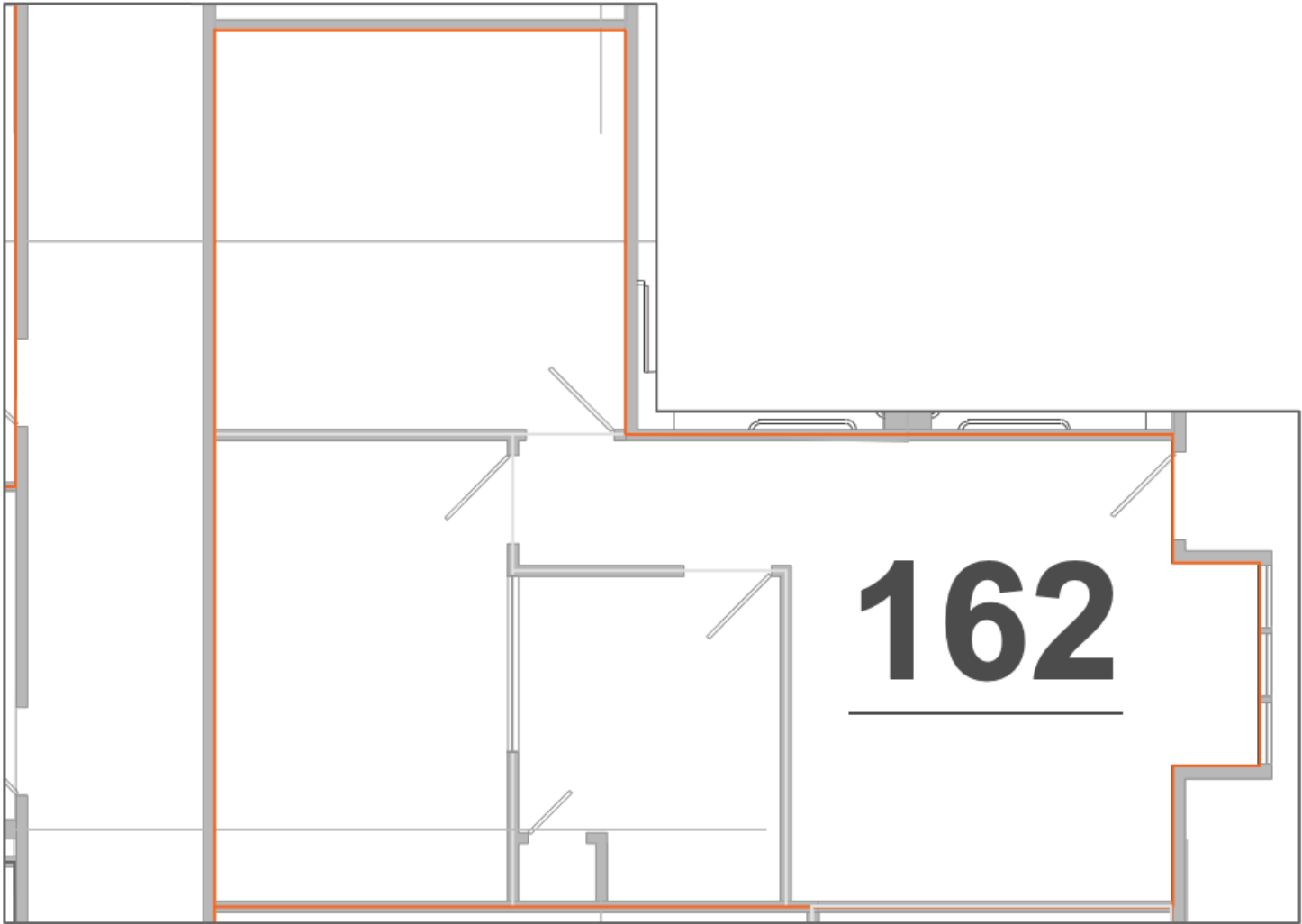
AVAILABLE SPACES

FLOORS	SUITE	USE	SF AVAILABLE	RENT	TERM
1st	102	Office	1,257 SF	\$2.85/MG	3 - 5 Years
1st	132	Office	650 SF	\$2.85/MG	3 - 5 Years
1st	140	Office	732 SF	\$2.85/MG	3 - 5 Years
1st	162	Office	922 SF	\$2.85/MG	3 - 5 Years
2nd	210 B	Office	490 SF	\$2.85/MG	3 - 5 Years
2nd	214	Office	407 SF	\$2.85/MG	3 - 5 Years
2nd	218	Office	787 SF	\$2.85/MG	3 - 5 Years













STARBOARD CRE
LOCAL • INDEPENDENT • ENTREPRENEURIAL

STARBOARDCRE.COM
OFC. PHONE 415.765.6900
49 POWELL STREET, SAN FRANCISCO, CA 94102



333 Gellert Blvd.

The largest, independently -owned commercial real estate firm in San Francisco.

Unique Vision

We see what others miss

Local Market Leader

No one knows Northern California like we do

Full Service Firm

We do it all

FRANK VELLA
Broker Associate
frank@starboardcre.com
CELL: 650.464.8062
OFC. PHONE: 415.765.6900
BRE # 01104977

Locally based, technology forward, our brokers are highly qualified experts backed by a full-service, in-house support team who understand the intricacies of San Francisco real estate. Starboard CRE brings decades of brokerage experience representing over 600 million square feet of space with an aggregate lease value of over 10 billion and investments sold over 3 billion.

BRE# 01103056

