

CHRISTIE'S
INTERNATIONAL REAL ESTATE
GROUP

FIRST CHOICE
INCOME TAX
168 8th Ave.

TAX PREP
JCPRINTING & ADVERTISING

DESIGN • PRINT • PROMOTE

SIGNS DESIGNS BANNERS T-SHIRTS AD JOURNALS LOGOS CUSTOM LOGOS

GRAPHIC DESIGN BUSINESS CARDS INVITES

© 1973 801-8812 @art@jcpriotinginc.com jcpriotinginc

BUSINESS CARDS FLYERS SIGNS OBITUARIES INVOICES

BANNERS T-SHIRTS LOGOS

JCPRINTING & ADVERTISING
INCORPORATED

WWW.JCPRINTINGINC.COM

USE OUR SAFE & SECURE CLIENT PORTAL: 1040TAXINFO.SECUREFILEPRO.COM

WORRY FREE TAX PREP

SECURE UPLOADS
1040 & 1099S

1040 FEDERAL & STATE RETURNS

PERSONAL TAXES
SMALL BUSINESS
RENTAL REAL ESTATE

CHERYL CHAPPELL, IRS RTRP
SINCE 1984

FREE TODAY
It's Easy, Safe & Secure!

FOR INFO CALL 877-311-880-3116 EMAIL US AT: 1040TAXINFO@GMAIL.COM

347 EAST 22ND STREET | PATERSON, NEW JERSEY

347 EAST 22ND STREET

PATTERSON | OFFERED AT: \$3,500,000

This 18,872 square feet mixed zone property located in Paterson, New Jersey, is an exceptional investment or end user opportunity for individuals looking for a versatile property with the potential for industrial and residential use. The property is situated on a lot size of approximately 0.53 acres, making it an excellent option for individuals who require ample space for their operations. The property features 2 loading docks and 16 feet ceiling height, providing ample space for large equipment and machinery. The asking price for this property is \$3.5 million, making it a competitive opportunity for individuals looking to invest in a mixed-zone property.

zoned use: mixed
INDUSTRIAL & RESIDENTIAL

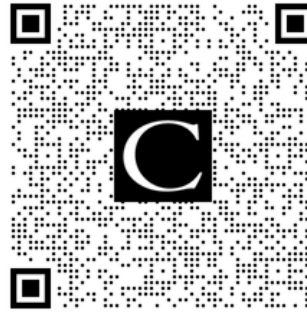
ceiling height
~16 FEET

lot size
0.52 ACRES

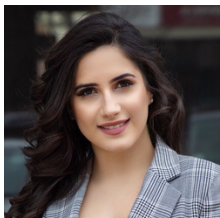
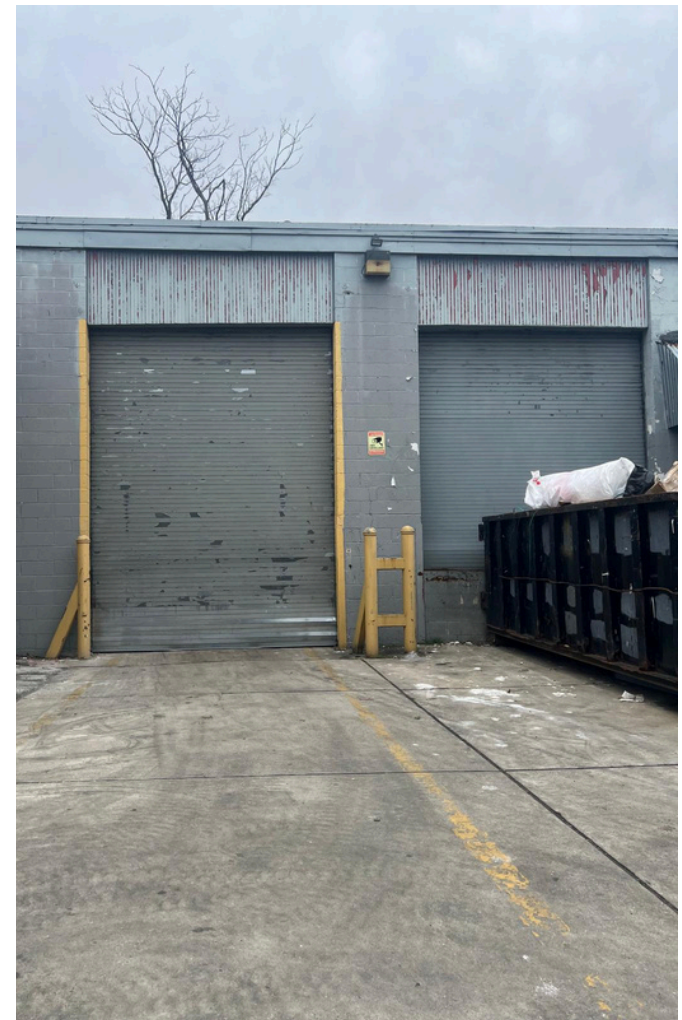
taxes
\$60,000

loading docks
2 WITH GARAGES

warehouse size
~18,872 SQFT



Scan the QR Code **HERE**
to Learn More About or
Schedule a Private Tour!
347 E 22ND STREET



Hadin Abreu
Realtor-Associate®

C +1 201 268 4866
Hadin.Abreure@gmail.com

CHRISTIE'S
INTERNATIONAL REAL ESTATE
GROUP

Christie's International Real Estate Group
4 Pembroke Place, Suite 2 | Edgewater, NJ 07020
O +1 201 547 1500 | christiesrealestate.com