

The Shops At Chestnut Green

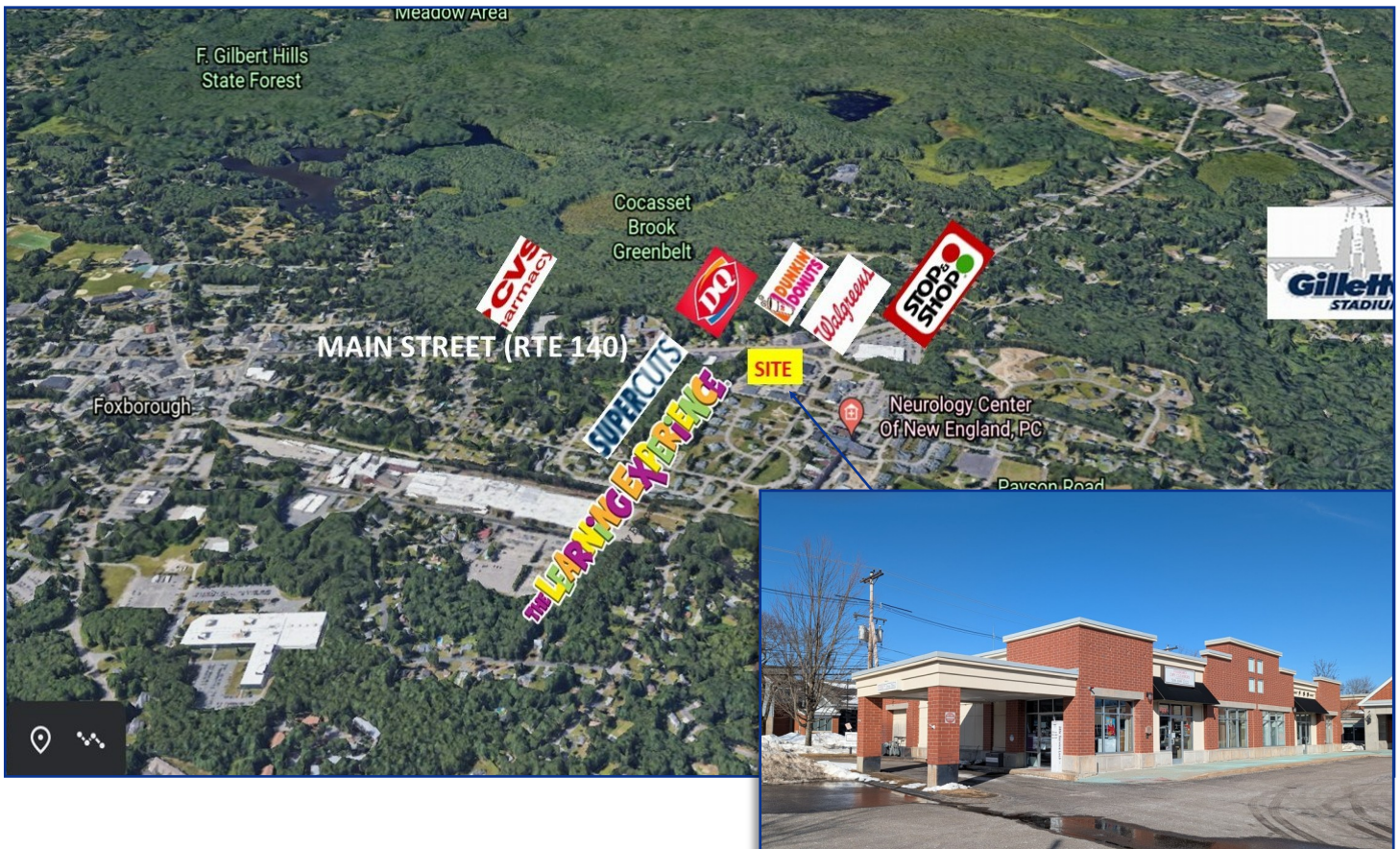
Retail Endcap w/ Drive-thru

121 Main St. (Rt. 140), Foxboro, MA

2,375 SF Available

Highlights

- 2,375 SF Retail Endcap Available
- Outstanding Parking (250 Spaces)
- Nearby Retailers Include Stop & Shop, CVS, Dunkin' Donuts and Walgreens
- Located at the Intersection of Main St. (Rt. 140), North St. and Chestnut St.
- Close Access to Rt. 95, 1, 140, I-495 and Gillette Stadium
- Dense Local Population: 25,027 (3 Miles), 74,195 (5 Miles)
- High Average HH Income: \$154,364 (3 Miles), \$162,487 (5 Miles)



The Shops At Chestnut Green

121 Main St. | Foxboro, MA



2025 Demographics	2 Mile	3 Mile	5 Mile
Population	12,407	25,027	74,195
Average HH Income	\$137,397	\$154,364	\$162,487

- Landlord Can Deliver Vanila Box Or Turn Key
- Pylon Signage
- Join Walgreens, Sharon Credit Union, Conrad's, Supercuts, Tanorama, 45 Fitness, FS 8 Yoga, The Learning Experience, and Stop & Shop
- Patio Or Drive-thru Available
- Large Kitchen, List Of Equipment To Be Provided

Contact Us

American Commercial Real Estate
 11 Apex Drive, Suite 300A #200, Marlborough, Massachusetts 01752
 Tel: (508) 735-6378 | Email: dusty@acreco.com | www.acreco.com



Bobby Burke
 508-479-5294
bobby.acreco@gmail.com