

33 WEST 55TH STREET

BETWEEN 5TH & 6TH AVENUES | MIDTOWN



33 WEST 55TH STREET

BETWEEN 5TH & 6TH AVENUES | MIDTOWN

PROPERTY DETAILS

SIZE: 1,300 SF Ground Floor

FRONTAGE: 10'

CEILING HEIGHT: 9' (approx)

POSSESSION: Immediate

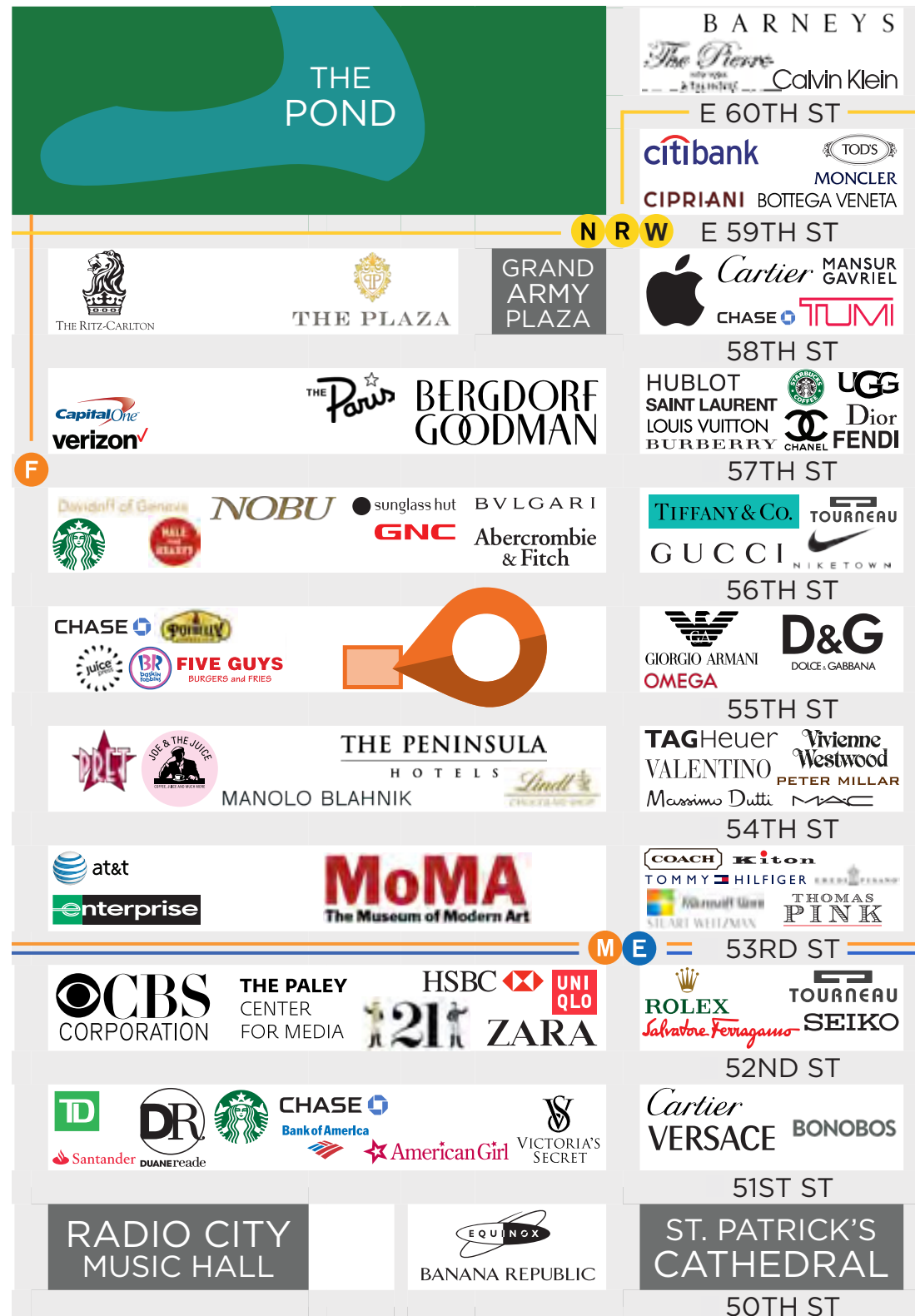
TRANSPORTATION: **1 2 6 B D F R W**

HIGHLIGHTS

- Situated at the base of the Shoreham Hotel
- All non-vented uses considered
- Neighboring tenants include:
MoMA, The Modern, Michael's New York, Le Bernardin, Mastro's Steakhouse, Benjamin Steakhouse Prime, The Peninsula New York, St. Patrick's Cathedral, Rockefeller Center, Radio City Music Hall, Saks Fifth Avenue, Bergdorf Goodman, Fifth Avenue flagship shopping, Apple Store (5th Ave), Starbucks, Pret A Manger, Sweetgreen, Equinox, Chase Bank, TD Bank, Duane Reade / Walgreens & many more!



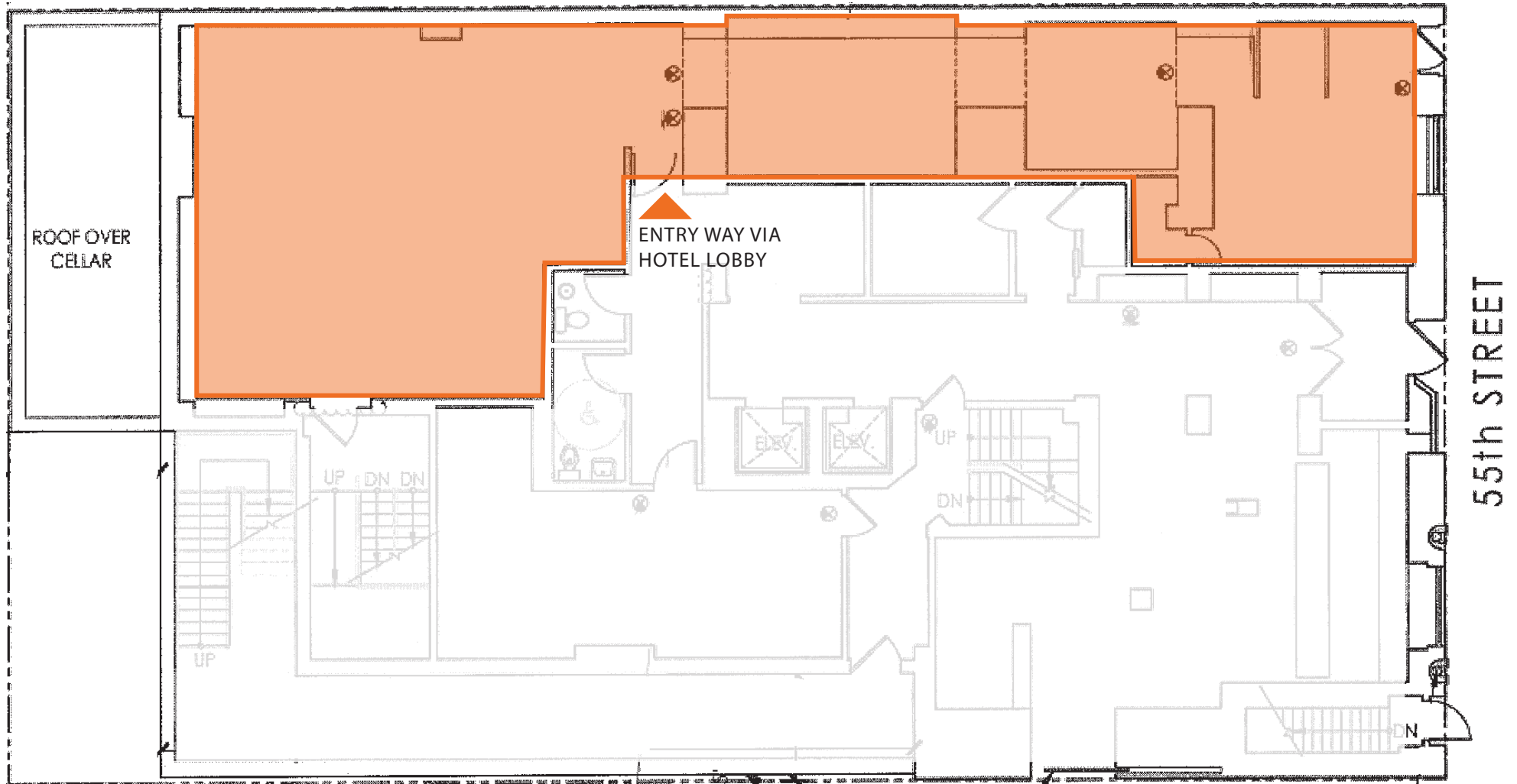
All information supplied in this marketing presentation and/or flyer is from sources deemed reliable and is furnished subject to errors, omissions, modifications, removal of listings from sale/lease and to any listing condition. Any square footage, dimensions, floor plans and/or technical data set forth are approximations and are subject to further elaboration/confirmation.



33 WEST 55TH STREET

BETWEEN 5TH & 6TH AVENUES | MIDTOWN

FLOOR PLANS:
GROUND FLOOR - 1,300 SF



FOR MORE INFORMATION, PLEASE CONTACT:

SOPHIA GAINES

M: 917.902.6352

SGaines@ksrny.com

ALBERT J. MANOPLA

M: 212.380.8369

AManopla@ksrny.com



1385 Broadway

New York, NY 10018

212.417.9217 | ksrny.com

