

COMMERCIAL PROPERTY FOR SALE

±5.5 ACRES

12001 & 12009 MIDLOTHIAN TURNPIKE • MIDLOTHIAN, VA

HIGHLIGHTS

SALES PRICE: Contact Broker for Price

ZONING: A - Agricultural

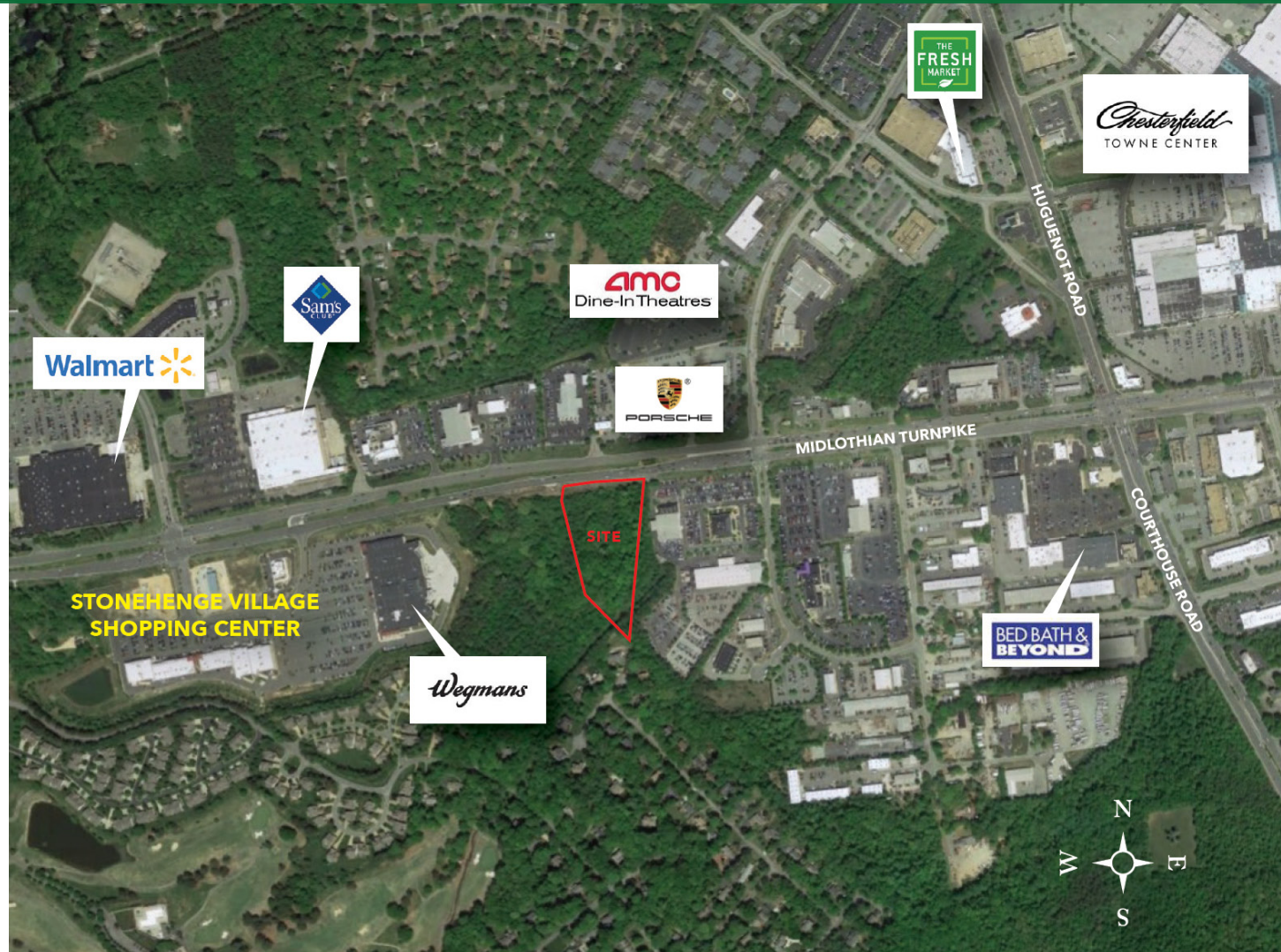
FRONTAGE: ±415 feet along
Midlothian Turnpike

LAND SIZE: Combined ±5.5 Acres

TRAFFIC COUNT: ±43,000 vehicles per day
along Midlothian Turnpike.

PROPERTY FEATURES

- Property is comprised of two parcels with a combined acreage of ±5.5 acres.
- Located on Midlothian Turnpike less than half a mile west of Chesterfield Towne Center, the largest enclosed shopping center in the Richmond Area with ±1,000,000 square feet of restaurants, shopping and services.
- Excellent opportunity for development next to Stonehenge Village anchored by Wegmans across from Walmart and Sam's Club.



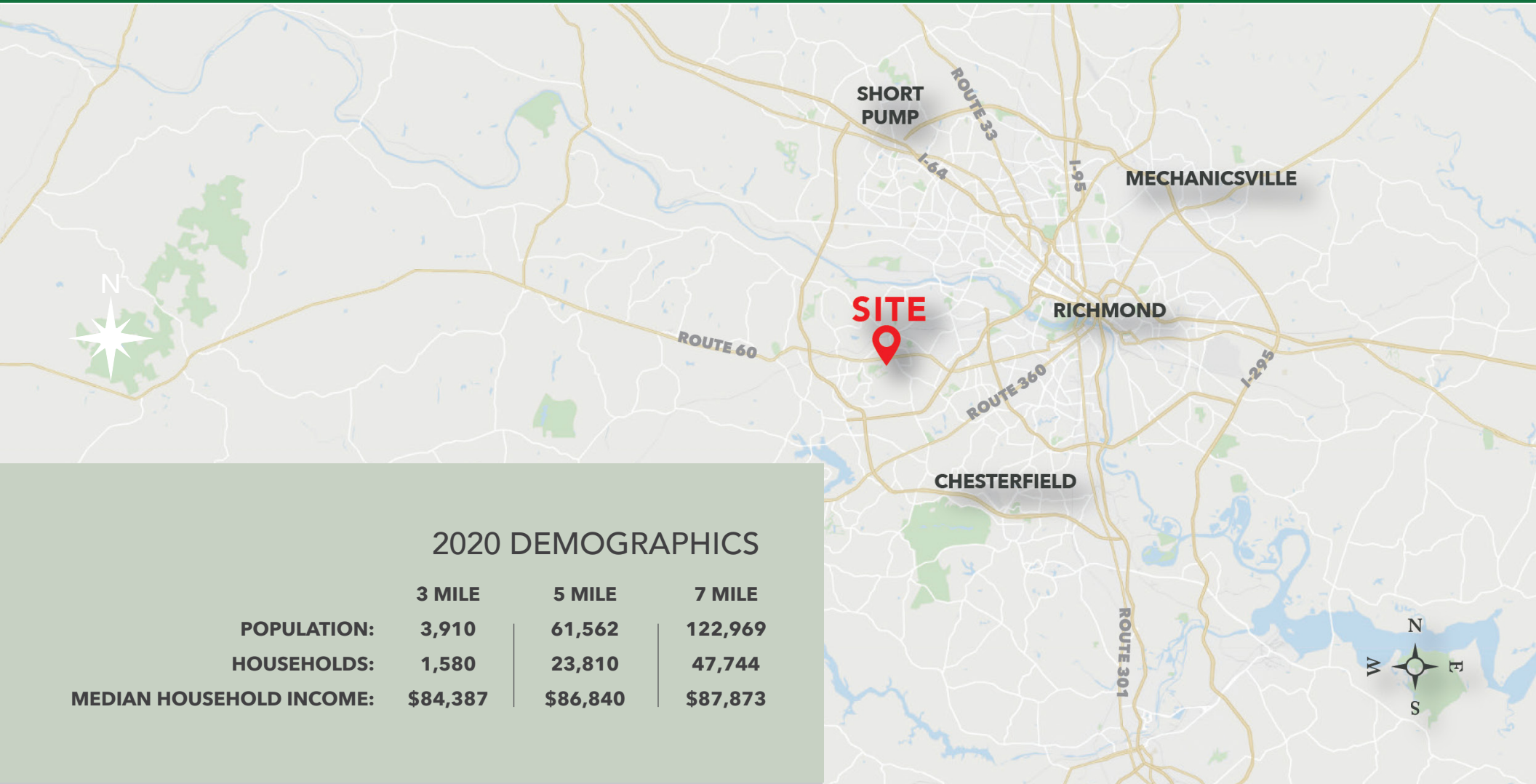
Commercial Real Estate Brokerage
423 N. Boundary Street, Suite 200
Williamsburg, VA 23185
www.rjsassocs.com

Robert J. Singley Jr. CCIM
P / 757.229.3139
E / rjsjr@rjsassocs.com

COMMERCIAL PROPERTY FOR SALE

±5.5 ACRES

12001 & 12009 MIDLOTHIAN TURNPIKE • MIDLOTHIAN, VA



Commercial Real Estate Brokerage
423 N. Boundary Street, Suite 200
Williamsburg, VA 23185
www.rjsassocs.com

Robert J. Singley Jr. CCIM
P / 757.229.3139
E / rjsjr@rjsassocs.com

COMMERCIAL PROPERTY FOR SALE

±5.5 ACRES

12001 & 12009 MIDLOTHIAN TURNPIKE • MIDLOTHIAN, VA



Commercial Real Estate Brokerage
423 N. Boundary Street, Suite 200
Williamsburg, VA 23185
www.rjsassocs.com

Robert J. Singley Jr. CCIM
P / 757.229.3139
E / rjsjr@rjsassocs.com