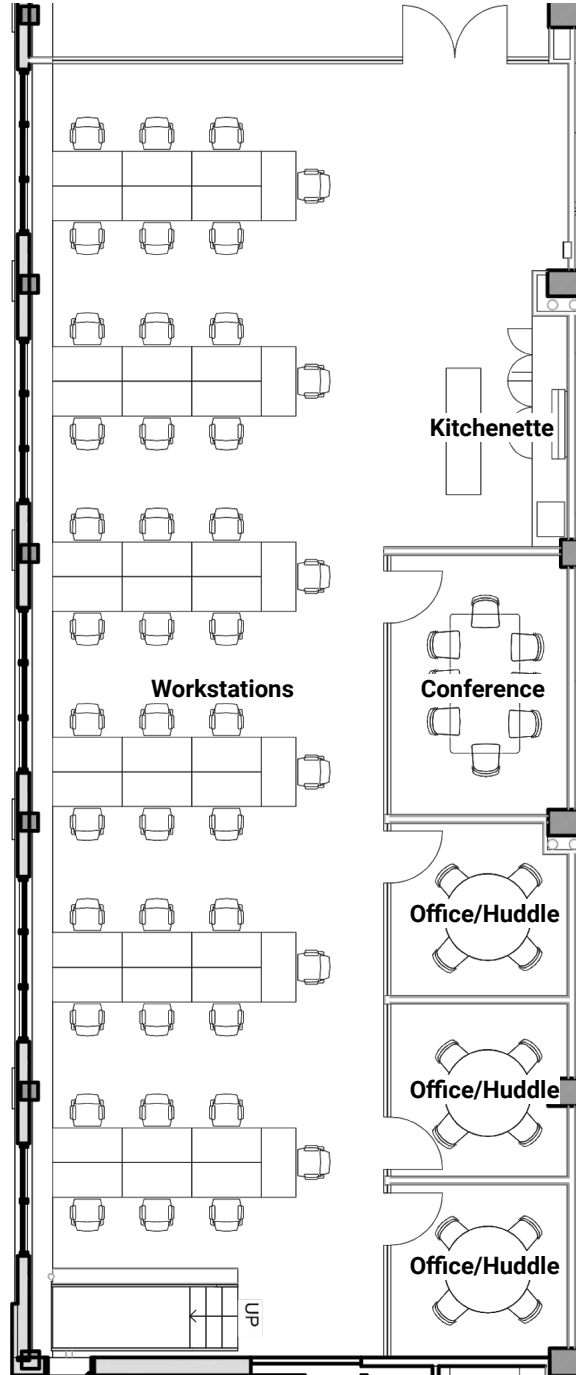
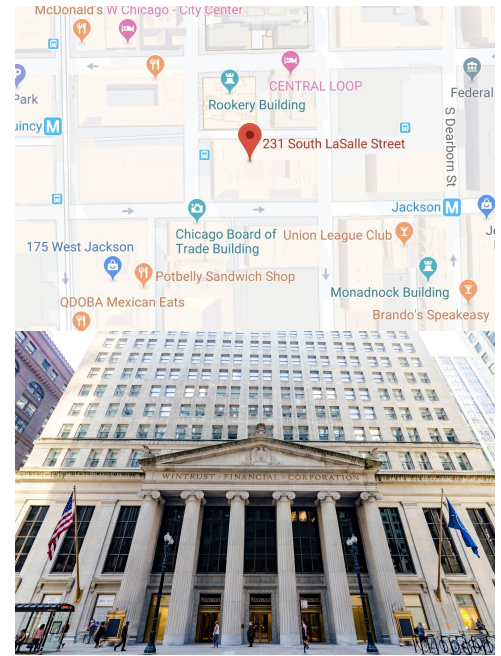


Suite A

Standard Features	
Workstations for up to 49	
Conference Room	
Office/Huddle Rooms	
Kitchenette	
Branding & Signage	
Accessories Package	
AV, Data, and Power	
Optional Features	
Prep Counter, Refrigerator, Microwave	
Phone Booths	
Soft Seating	
Communal Work/Cafe Seating	
Decor (Art & Greenery)	
Carpeting	
Sound Masking System	





Opening Date - September 2019

Neighborhood

- Ideally located in the The Loop — a vibrant area featuring eclectic eateries, shops, theaters, and parks
- The Loop is the second largest commercial business district in the United States
- Comprised mostly of high-rises, it's also home to the 108-story Willis Tower



Building Amenities

- 7,000 square foot state of the art fitness center
- Rooftop deck with views of the Chicago skyline
- Secured bike room
- Starbucks on-site
- Conference Center and tenant lounge



Transportation

- Short walk from major commuter train & several CTA elevated rail stations
- Direct access to five different CTA lines & numerous bus stops