



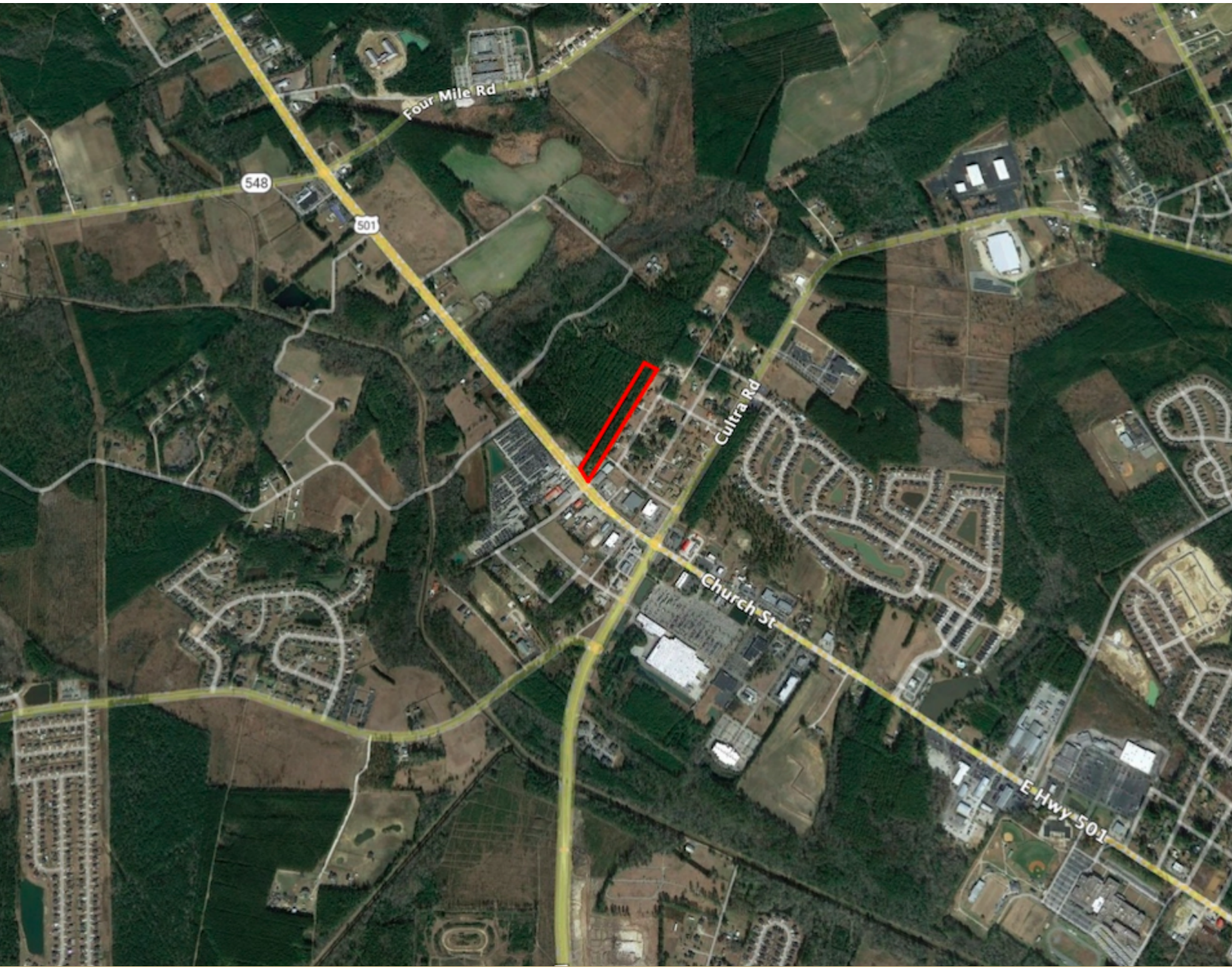
KEYSTONE
COMMERCIAL REALTY

LAND FOR SALE



Davis 501 Tract

2964 HIGHWAY 501 W CONWAY, SC 29526-4409



DREW LANGWAY

843.626.3400

drew@keystonecommercial.com

4706 Oleander Drive, Myrtle Beach, SC 29577-3537

www.keystonecommercial.com



Davis 501 Tract

2964 W HWY 501, CONWAY, SC 29526



OFFERING SUMMARY

Sale Price:	\$749,900
Lot Size:	3.57 Acres
Price / Acre:	\$210,056
Zoning:	Highway Commercial (HC) & Commercial Forest/Agricultural (CFA)

PROPERTY OVERVIEW

OFFERED FOR SALE: Approximately 3.57 Acres with Approximately +/- 106' of frontage on US Highway 501 in Conway, SC. This location is ideal for a future commercial development. Easily accessible via US-501, US-701 and US-378.

PROPERTY HIGHLIGHTS

- Approximately 3.57 Acres.
- Located Outside the City Limits of Conway, SC.
- Approximately +/- 106' Frontage on US-501.
- Approximately +/- 1,470' Depth.
- Tract A Identified as TMS#1220003010 and PIN# 33703010014, County of Horry, SC.
- Tract B Identified as TMS# 1220003062 and PIN# 32614040009, County of Horry, SC.
- Annual Real Estate Taxes 2021: \$1,070.30, County of Horry, SC.
- Average Daily Traffic Count: 20,000 (Source: SCDOT 2019).
- Approx. 1,398 SF Residential Building on Tract A.
- Underground Utilities.
- Curb Cut on Highway 501.
- Additional Ingress/Egress from Mercedes Drive.

DREW LANGWAY
843.626.3400
drew@keystonecommercial.com



2964 HIGHWAY 501 W

CONWAY, SC 29526-4409

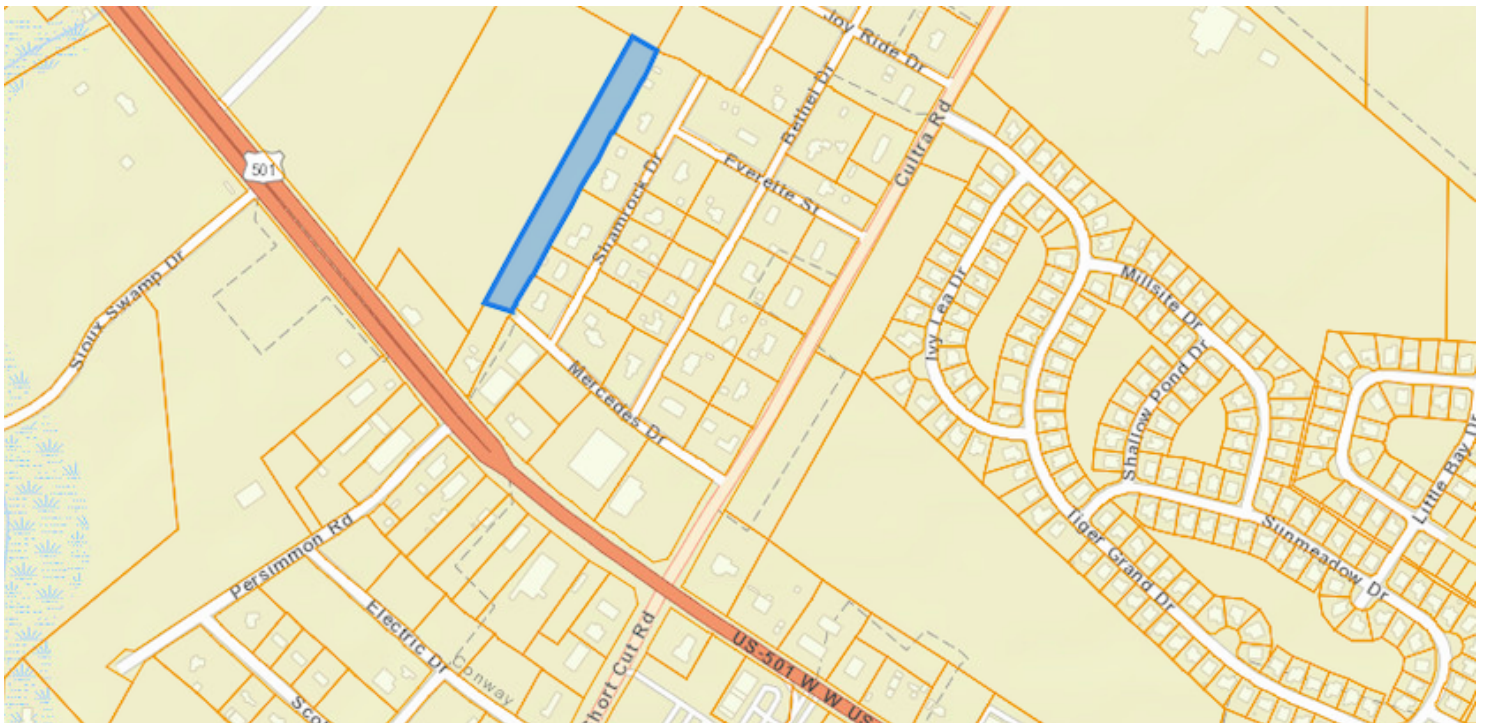
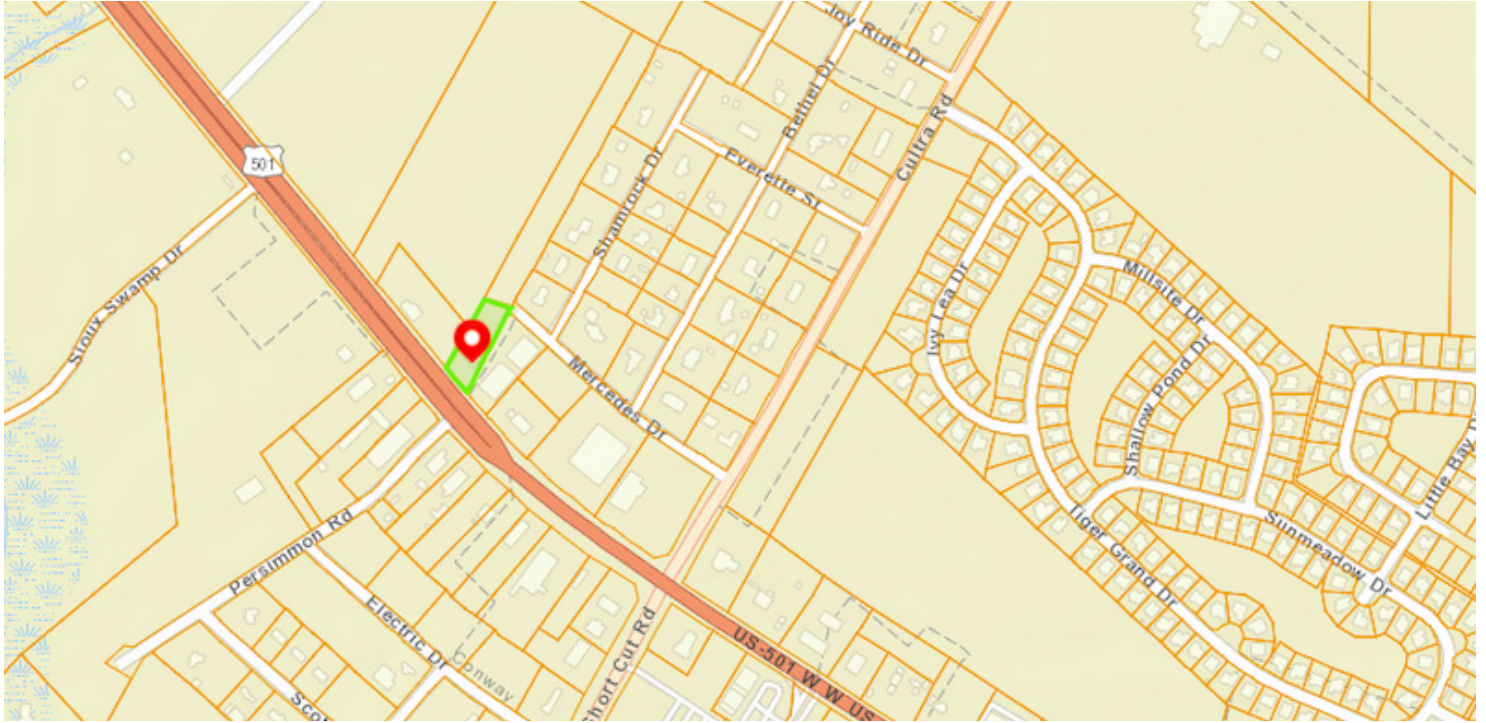


DREW LANGWAY
843.626.3400
drew@keystonecommercial.com



2964 HIGHWAY 501 W

CONWAY, SC 29526-4409

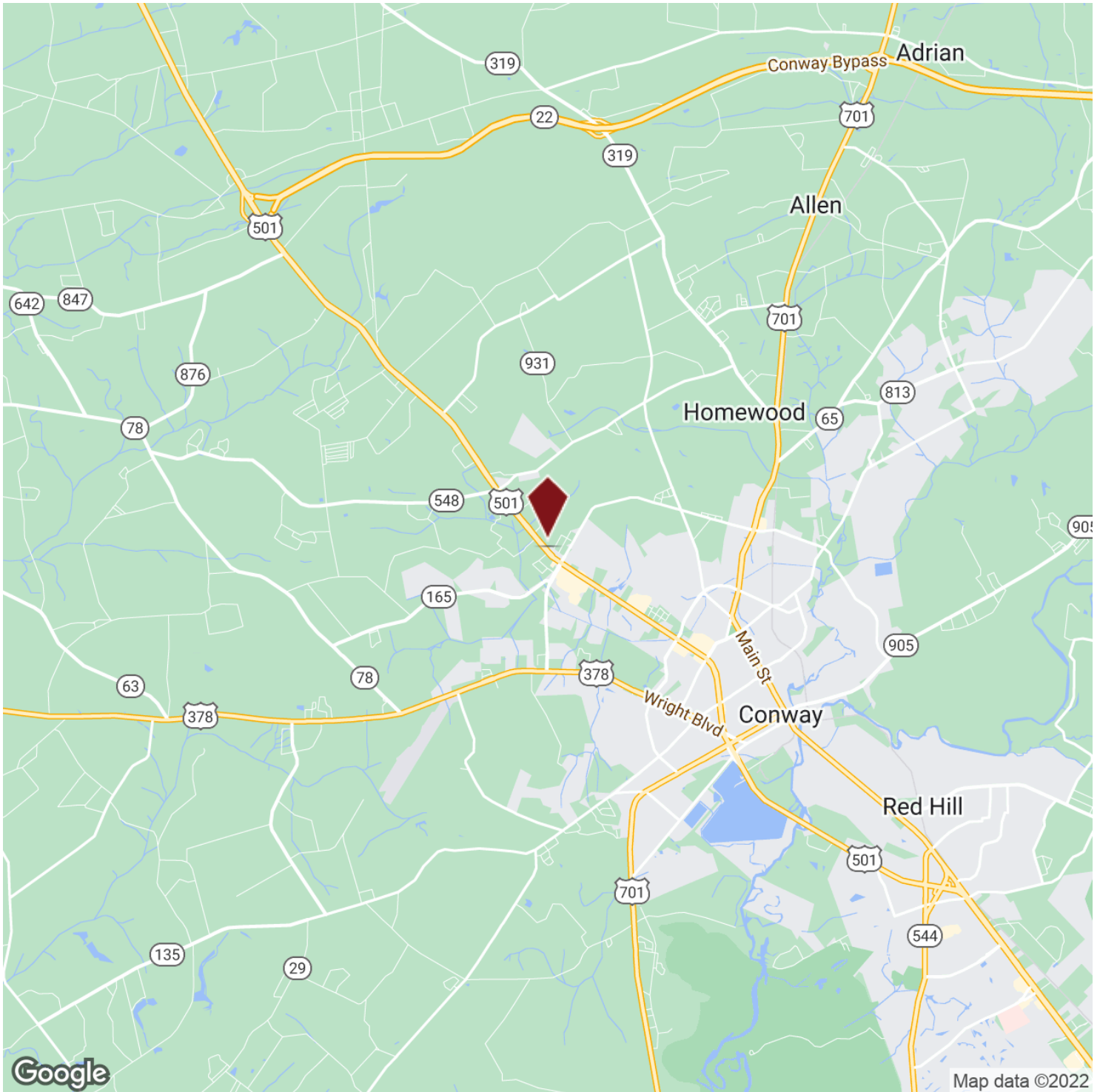


DREW LANGWAY
843.626.3400
drew@keystonecommercial.com



2964 HIGHWAY 501 W

CONWAY, SC 29526-4409



DREW LANGWAY
843.626.3400
drew@keystonecommercial.com