

JEWELL PLAZA SHOPPING CENTER

10815 W. Jewell Ave, Lakewood, CO 80232

FOR LEASE



PROPERTY HIGHLIGHTS

- 7-Eleven anchored retail center located in the heart of Lakewood
- Across from Walgreens and Safeway anchored centers
- NEC of Jewell Ave & South Kipling Parkway
- Ample parking
- Monument signage
- New paint and newly sealed/striped parking lot
- **UNIT B - AVAILABLE - 2,044 SF - Operational liquor store - business, lease, license available**
- **UNIT C - AVAILABLE - 922 SF - former salon**
- **Unit F - AVAILABLE - 1,300 SF - former tattoo**
- **UNIT G - H - AVAILABLE - 2,600 SF - Turn-key martial arts/fitness space**
- **UNIT M - AVAILABLE -1,040 SF - Open retail with back storage area and one large private office**
- **UNIT P - AVAILABLE - 1,304 SF - Vanilla shell,**

OFFERING SUMMARY

Lot Size:	2.35 Acres
Building Size:	21,800 SF
Lease Rate:	\$16.00 SF/YR (NNN \$10.54)



CHARLES NUSBAUM

Antonoff & Co. Brokerage, Inc.
CO #EA040028301
303.454.5420
cnusbaum@antonoff.com

CHRIS VINCENT

303.407.6388
chris@denverofficespace.com

The information above was obtained from sources we deem reliable; however, no warranty or representation, expressed or implied, is made as to the accuracy of the information contained herein. Any reliance on this information is solely at your own risk.

ANTONOFF
& CO. BROKERAGE INC.

JEWELL PLAZA SHOPPING CENTER

10815 W. Jewell Ave, Lakewood, CO 80232

FOR LEASE



	1 MILE	3 MILE	5 MILE
2025 Total Population	11,054	96,131	269,810
2025 Average Household Income	\$131,569	\$121,979	\$115,443
Businesses	312	5,728	13,494
Employees	2,116	38,952	107,587

TRAFFIC COUNTS

S. Kipling Pkwy. N of W. Jewell Ave.	39,331/vpd
S. Kipling Pkwy. S of W. Jewell Ave.	38,395/vpd
W. Jewell Ave. W of S. Kipling Pkwy.	18,890/vpd

* Demographics provided by CoStar

CHARLES NUSBAUM

Antonoff & Co. Brokerage, Inc.
CO #EA040028301
303.454.5420
cnusbaum@antonoff.com

CHRIS VINCENT

303.407.6388
chris@denverofficespace.com

ANTONOFF
& CO. BROKERAGE INC.

The information above was obtained from sources we deem reliable; however, no warranty or representation, expressed or implied, is made as to the accuracy of the information contained herein. Any reliance on this information is solely at your own risk.

JEWELL PLAZA SHOPPING CENTER

10815 W. Jewell Ave., Lakewood, CO 80232

FOR LEASE



CHARLES NUSBAUM

Antonoff & Co. Brokerage, Inc.
CO #EA040028301
303.454.5420
cnusbaum@antonoff.com

CHRIS VINCENT

303.407.6388
chris@denverofficespace.com

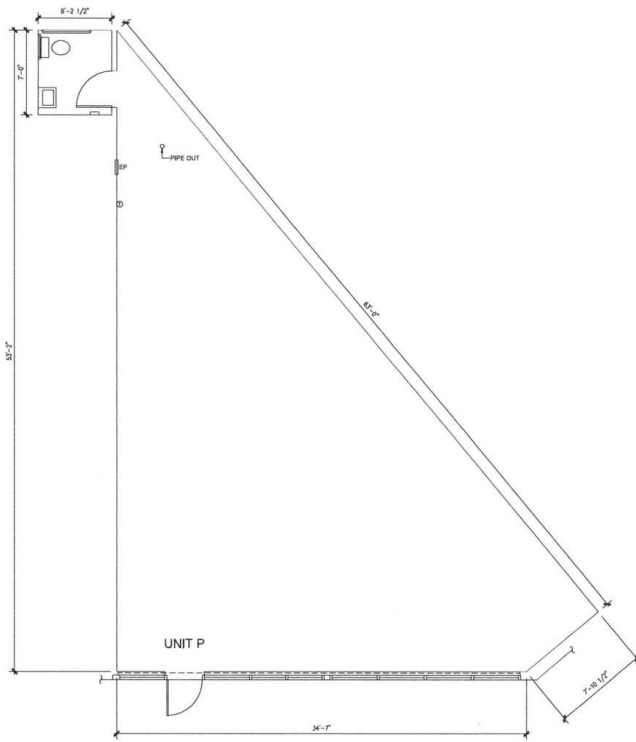
ANTONOFF
& CO. BROKERAGE INC.

The information above was obtained from sources we deem reliable; however, no warranty or representation, expressed or implied, is made as to the accuracy of the information contained herein. Any reliance on this information is solely at your own risk.

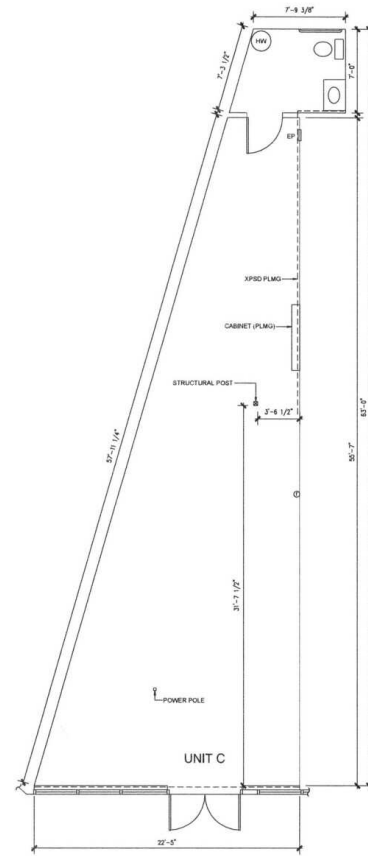
JEWELL PLAZA SHOPPING CENTER

10815 W. Jewell Ave, Lakewood, CO 80232

FOR LEASE



EXISTING FLOOR PLAN, UNIT P
SCALE: 1/4"=1'-0"



EXISTING FLOOR PLAN, UNIT C
SCALE: 1/4"=1'-0"

CHARLES NUSBAUM

Antonoff & Co. Brokerage, Inc.
CO #EA040028301
303.454.5420
cnusbaum@antonoff.com

CHRIS VINCENT

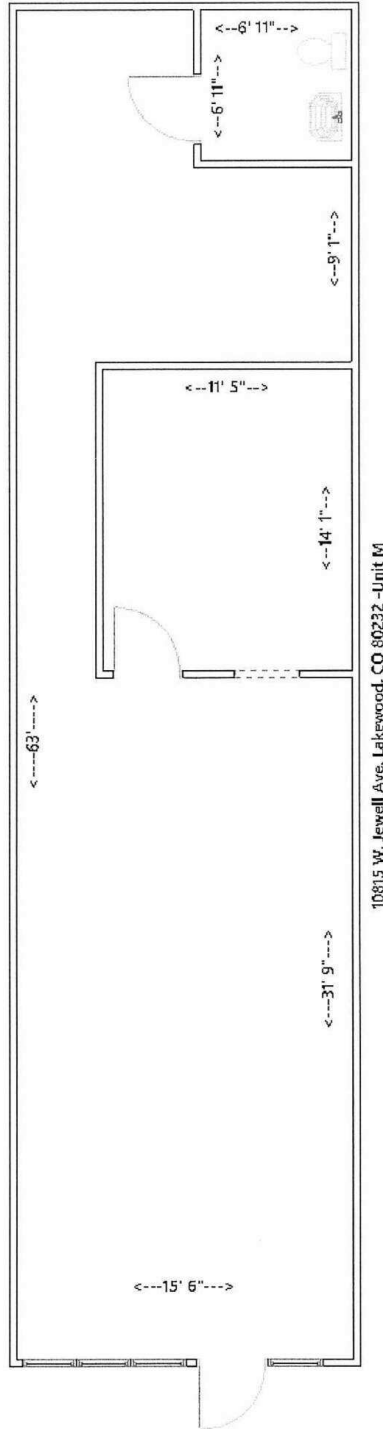
303.407.6388
chris@denverofficespace.com

ANTONOFF
& CO. BROKERAGE INC.

JEWELL PLAZA SHOPPING CENTER

10815 W. Jewell Ave, Lakewood, CO 80232

FOR LEASE



CHARLES NUSBAUM

Antonoff & Co. Brokerage, Inc.
CO #EA040028301
303.454.5420
cnusbaum@antonoff.com

CHRIS VINCENT

303.407.6388
chris@denverofficespace.com

ANTONOFF
& CO. BROKERAGE INC.

The information above was obtained from sources we deem reliable; however, no warranty or representation, expressed or implied, is made as to the accuracy of the information contained herein. Any reliance on this information is solely at your own risk.

JEWELL PLAZA SHOPPING CENTER

10815 W. Jewell Ave., Lakewood, CO 80232

FOR LEASE



<u>UNIT</u>	<u>TENANT</u>
A	7 ELEVEN
B	2,044 SF LIQUOR STORE Currently Operating
C	922 SF AVAILABLE (former salon)
D & E	H & R BLOCK
F	1,300 SF AVAILABLE – Former Tattoo
G – H	2,600 SF AVAILABLE – Former martial arts/fitness space
J	MASSAGE
K	CROWN JEWELL VAPES & SMOKES
L	DENTIST
M	1,040 SF AVAILABLE (former retail & insurance)
N	NAIL SALON
P	1,304 SF AVAILABLE – Vanilla Shell
Q	BAR & GRILL

CHARLES NUSBAUM

Antonoff & Co. Brokerage, Inc.
CO #EA040028301
303.454.5420
cnusbaum@antonoff.com

CHRIS VINCENT

303.407.6388
chris@denverofficespace.com

ANTONOFF
& CO. BROKERAGE INC.

The information above was obtained from sources we deem reliable; however, no warranty or representation, expressed or implied, is made as to the accuracy of the information contained herein. Any reliance on this information is solely at your own risk.

DIFFERENT BROKERAGE RELATIONSHIPS ARE AVAILABLE WHICH INCLUDE LANDLORD AGENCY, TENANT AGENCY OR TRANSACTION-BROKERAGE.

BROKERAGE DISCLOSURE TO TENANT

DEFINITIONS OF WORKING RELATIONSHIPS

For purposes of this document, landlord includes sublandlord and tenant includes subtenant.

Landlord's Agent: A landlord's agent works solely on behalf of the landlord to promote the interests of the landlord with the utmost good faith, loyalty and fidelity. The agent negotiates on behalf of and acts as an advocate for the landlord. The landlord's agent must disclose to potential tenants all adverse material facts actually known by the landlord's agent about the property. A separate written listing agreement is required which sets forth the duties and obligations of the broker and the landlord.

Tenant's Agent: A tenant's agent works solely on behalf of the tenant to promote the interests of the tenant with the utmost good faith, loyalty and fidelity. The agent negotiates on behalf of and acts as an advocate for the tenant. The tenant's agent must disclose to potential landlords all adverse material facts actually known by the tenant's agent, including the tenant's financial ability to perform the terms of the transaction and, if a residential property, whether the tenant intends to occupy the property. A separate written tenant agency agreement is required which sets forth the duties and obligations of the broker and the tenant.

Transaction-Broker: A transaction-broker assists the tenant or landlord or both throughout a real estate transaction by performing terms of any written or oral agreement, fully informing the parties, presenting all offers and assisting the parties with any contracts, including the closing of the transaction, without being an agent or advocate for any of the parties. A transaction-broker must use reasonable skill and care in the performance of any oral or written agreement, and must make the same disclosures as agents about all adverse material facts actually known by the transaction-broker concerning a property or a tenant's financial ability to perform the terms of a transaction and, if a residential property, whether the tenant intends to occupy the property. No written agreement is required.

Customer: A customer is a party to a real estate transaction with whom the broker has no brokerage relationship because such party has not engaged or employed the broker, either as the party's agent or as the party's transaction-broker.

RELATIONSHIP BETWEEN BROKER AND TENANT

Broker and Tenant referenced below have NOT entered into a tenant agency agreement. The working relationship specified below is for a specific property described as:

[10815 W. Jewell Ave., Lakewood, CO 80232 - Jewell Plaza Shopping Center](#)

or real estate which substantially meets the following requirements:

Tenant understands that Tenant is not liable for Broker's acts or omissions that have not been approved, directed, or ratified by Tenant.

CHECK ONE BOX ONLY:

Multiple-Person Firm. Broker, referenced below, is designated by Brokerage Firm to serve as Broker. If more than one individual is so designated, then references in this document to Broker shall include all persons so designated, including substitute or additional brokers. The brokerage relationship exists only with Broker and does not extend to the employing broker, Brokerage Firm or to any other brokers employed or engaged by Brokerage Firm who are not so designated.

One-Person Firm. If Broker is a real estate brokerage firm with only one licensed natural person, then any references to Broker or Brokerage Firm mean both the licensed natural person and brokerage firm who shall serve as Broker.

CHECK ONE BOX ONLY:

Customer. Broker is the landlord’s agent landlord’s transaction-broker and Tenant is a customer. Broker intends to perform the following list of tasks: Show the premises Prepare and Convey written offers, counteroffers and agreements to amend or extend the contract. Broker is not the agent or transaction-broker of Tenant.

Customer for Broker’s Listings – Transaction-Brokerage for Other Properties. When Broker is the landlord’s agent or landlord’s transaction-broker, Tenant is a customer. When Broker is not the landlord’s agent or landlord’s transaction-broker, Broker is a transaction-broker assisting Tenant in the transaction. Broker is not the agent of Tenant.

Transaction-Brokerage Only. Broker is a transaction-broker assisting the Tenant in the transaction. Broker is not the agent of Tenant.

If Broker is acting as a transaction-broker, Tenant consents to Broker’s disclosure of Tenant’s confidential information to the supervising broker or designee for the purpose of proper supervision, provided such supervising broker or designee shall not further disclose such information without consent of Tenant, or use such information to the detriment of Tenant.

THIS IS NOT A CONTRACT.

If this is a residential transaction, the following provision applies:

MEGAN’S LAW. If the presence of a registered sex offender is a matter of concern to Tenant, Tenant understands that Tenant must contact local law enforcement officials regarding obtaining such information.

TENANT ACKNOWLEDGMENT:

Tenant acknowledges receipt of this document on _____.

Tenant

Tenant

Tenant

Tenant

BROKER ACKNOWLEDGMENT:

On _____, Broker provided _____ (Tenant) with this document via _____ and retained a copy for Broker’s records.

Brokerage Firm’s Name: Antonoff & Co. Brokerage Inc.

Charles Nusbaum 06/03/2025
Broker Antonoff & Co. Brokerage, Inc.
By Charles Nusbaum