



Office Building For Lease

St. Petersburg Professional Office

1212 66th St N, Saint Petersburg, FL 33710

For More Information:

813-254-6756 | EXT 42

Michael Braccia, P.A. | mike@baystreetcommercial.com





St. Petersburg Professional Office

1212 66th St N, Saint Petersburg, FL 33710

Executive Summary



OFFERING SUMMARY

Available SF:	3,273 SF
Lease Rate:	\$12.50 - 16.50 SF/yr (NNN)
Lot Size:	27,373 SF
Year Built:	1967
Building Size:	10,920 SF
Renovated:	1976
Zoning:	B1
Market:	Tampa-St Petersburg- Clearwater
Traffic Count:	39,000

PROPERTY OVERVIEW

Joslin Plaza is a quaint and highly visible medical / professional office center located on busy 66th Street North in the heart of Pinellas County. This single story, 7 tenant building totals approximately 11,000 SF with 44 parking spaces in the front and rear of the building.

Estimated CAM: \$6.46

Suite 1212 - 963 SF - Professional office space just renovated. 12 person waiting room, 3-4 station reception office, glass-walled copy/work room, 2 restrooms, break room, data room, 4 large executive offices, large conference room. Initial estimated monthly rent: 963 SF: \$1,843 (base rate and CAM) plus applicable tax - 3,273 SF: \$5,171 (base rate and CAM) plus applicable tax (Includes a discount for both spaces - Calculated at \$12.50 NNN)

Suite 1214 - 2,310 SF - Initial estimated monthly rent: 2,310 SF: \$3,650 (base rate + CAM) plus applicable tax - 3,273 SF: \$5,171 (base rate + CAM) plus applicable tax (Includes a discount for renting both spaces - Calculated at \$12.50 NNN)

LOCATION OVERVIEW

Located in St. Petersburg close to St. Petersburg College and just west of Alt-19 and I-275, offering easy access to all surrounding areas.



St. Petersburg Professional Office

1212 66th St N, Saint Petersburg, FL 33710

Additional Photos



Bay Street Commercial | 611 West Bay Street | Tampa, FL 33606 | 813.625.2375 | www.baystreetcommercial.com

3

For More Information:

813-254-6756 | EXT 42

Property Webpage: www.properties.baystreetcommercial.com/307194-lease

Michael Braccia, P.A. | mike@baystreetcommercial.com





St. Petersburg Professional Office

1212 66th St N, Saint Petersburg, FL 33710

Suite 1212 - 1214



Bay Street Commercial | 611 West Bay Street | Tampa, FL 33606 | 813.625.2375 | www.baystreetcommercial.com

4

For More Information:

813-254-6756 | EXT 42

Property Webpage: www.properties.baystreetcommercial.com/307194-lease

Michael Braccia, P.A. | mike@baystreetcommercial.com

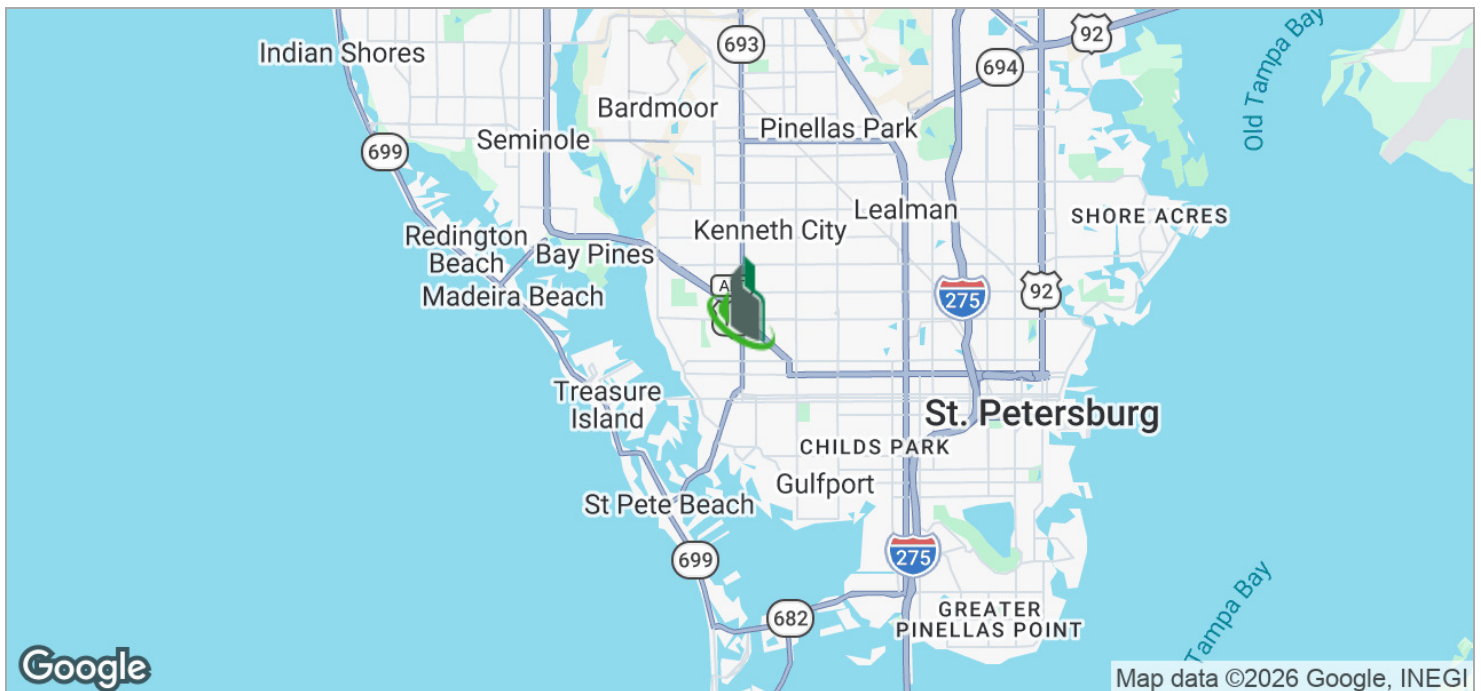
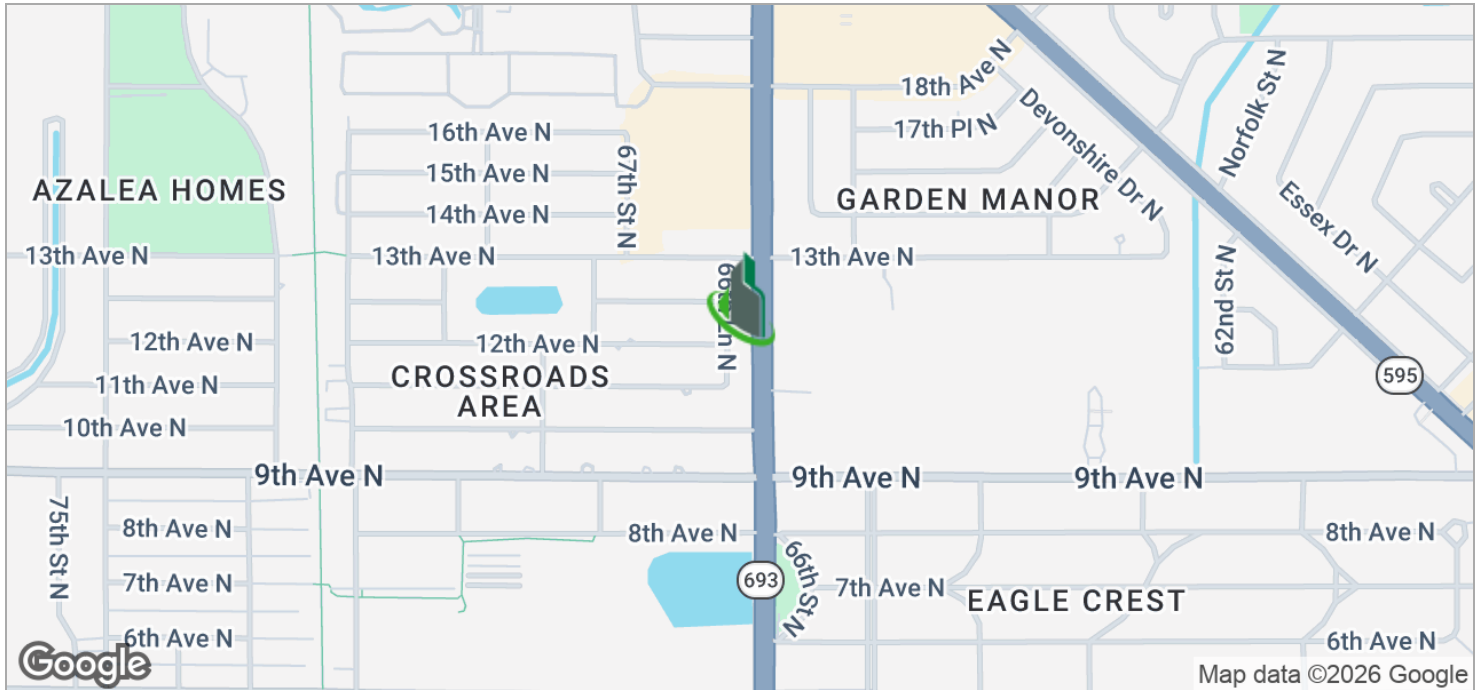




St. Petersburg Professional Office

1212 66th St N, Saint Petersburg, FL 33710

Location Maps





St. Petersburg Professional Office

1212 66th St N, Saint Petersburg, FL 33710

Retailer Map

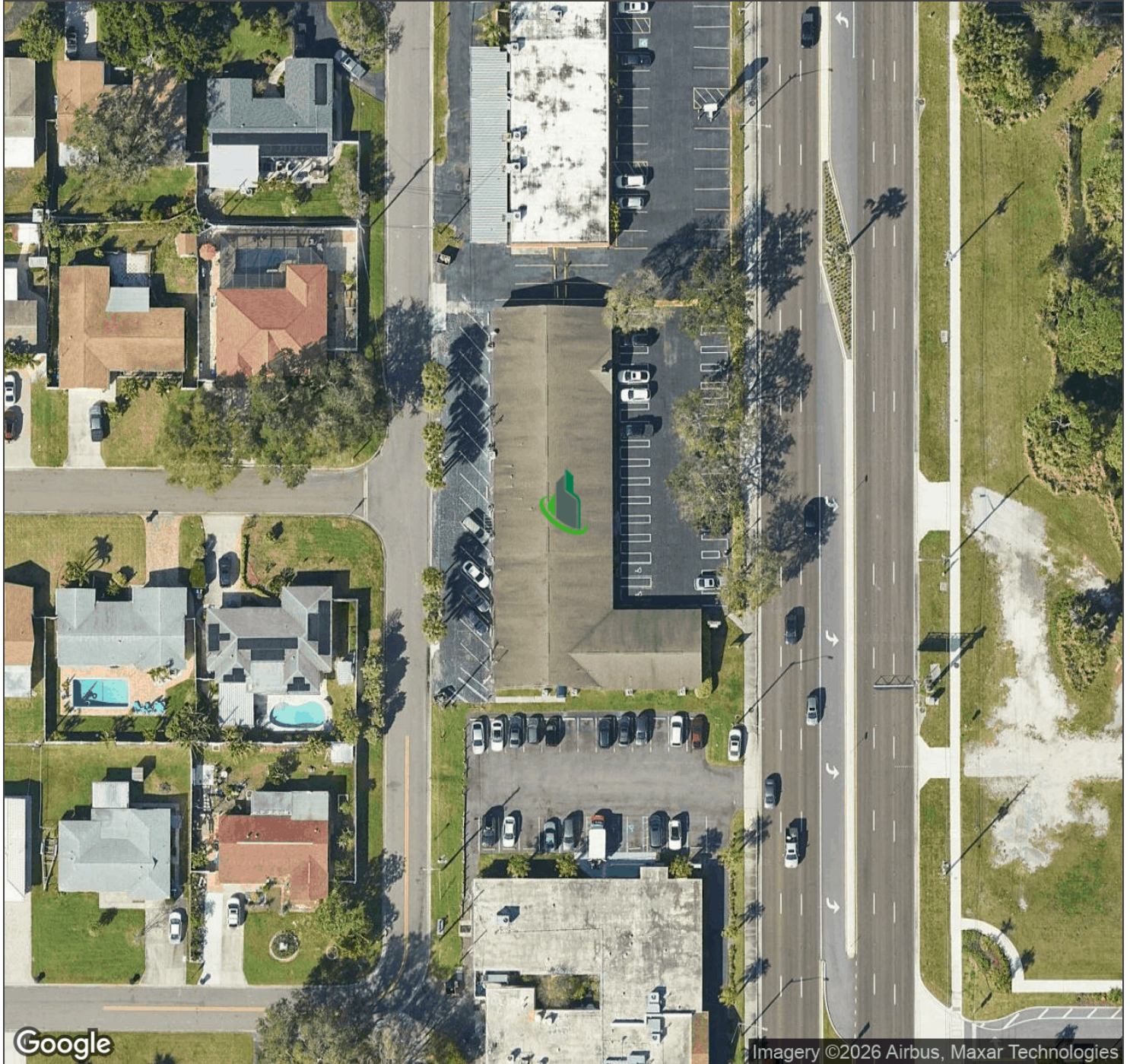




St. Petersburg Professional Office

1212 66th St N, Saint Petersburg, FL 33710

Aerial Map



Bay Street Commercial | 611 West Bay Street | Tampa, FL 33606 | 813.625.2375 | www.baystreetcommercial.com

7

For More Information:

813-254-6756 | EXT 42

Property Webpage: www.properties.baystreetcommercial.com/307194-lease

Michael Braccia, P.A. | mike@baystreetcommercial.com

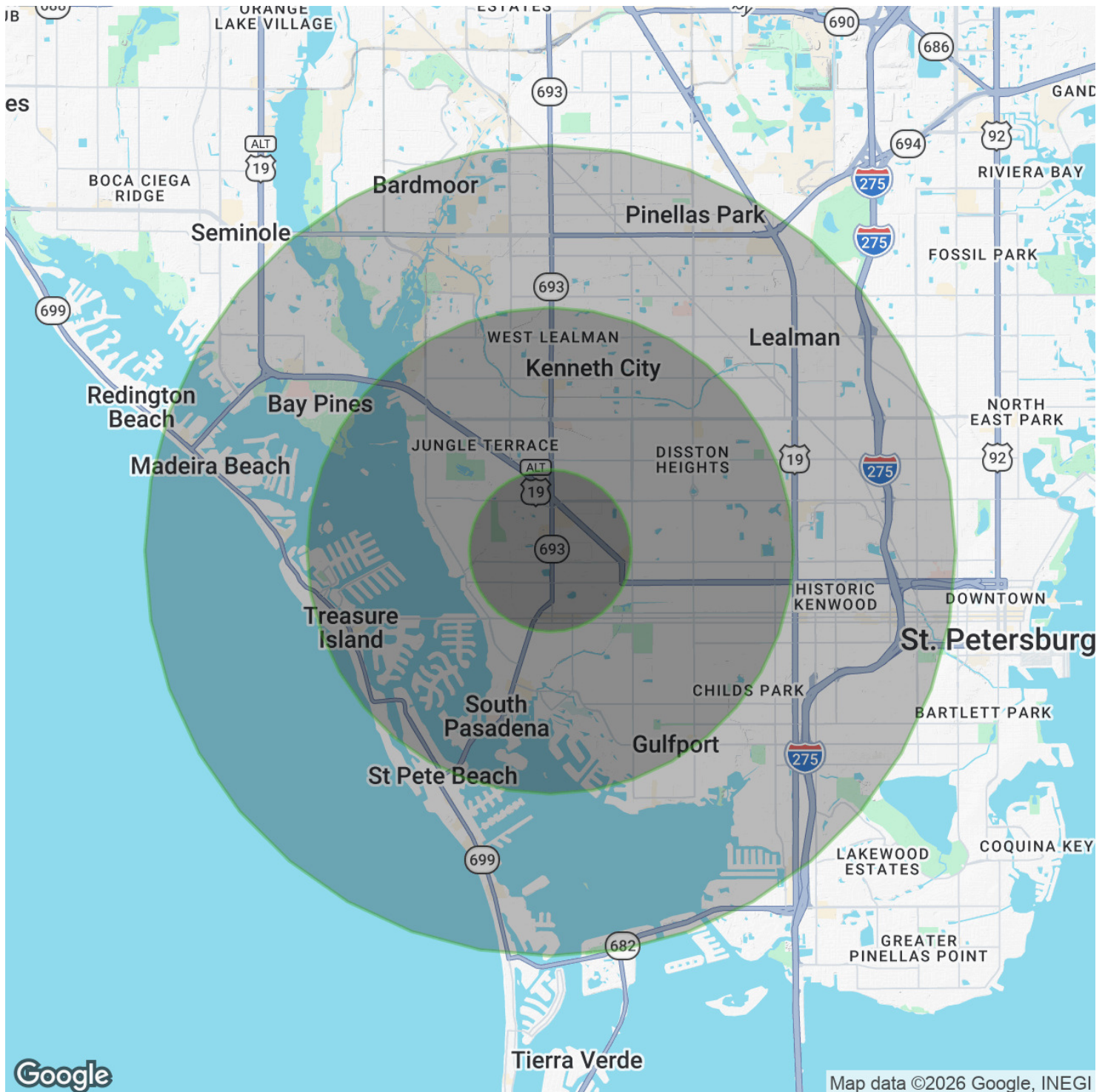




St. Petersburg Professional Office

1212 66th St N, Saint Petersburg, FL 33710

Demographics Map & Report



For More Information:

813-254-6756 | EXT 42

Property Webpage: www.properties.baystreetcommercial.com/307194-lease

Michael Braccia, P.A. | mike@baystreetcommercial.com



St. Petersburg Professional Office

1212 66th St N, Saint Petersburg, FL 33710

Demographics Map & Report

POPULATION

	1 MILE	3 MILES	5 MILES
Total Population	12,600	101,428	229,218
Average Age	42.6	45.3	44.2
Average Age (Male)	37.8	43.8	42.8
Average Age (Female)	45.7	46.8	45.4

HOUSEHOLDS & INCOME

	1 MILE	3 MILES	5 MILES
Total Households	5,177	44,843	100,057
# of Persons per HH	2.4	2.3	2.3
Average HH Income	\$55,296	\$57,193	\$55,916
Average House Value	\$185,717	\$200,807	\$213,484

ETHNICITY (%)

	1 MILE	3 MILES	5 MILES
Hispanic	6.4%	6.2%	6.4%

RACE

	1 MILE	3 MILES	5 MILES
Total Population - White	11,106	85,164	180,086
% White	88.1%	84.0%	78.6%
Total Population - Black	754	8,534	31,465
% Black	6.0%	8.4%	13.7%
Total Population - Asian	426	4,096	9,850
% Asian	3.4%	4.0%	4.3%
Total Population - Hawaiian	0	7	113
% Hawaiian	0.0%	0.0%	0.0%
Total Population - American Indian	13	231	587
% American Indian	0.1%	0.2%	0.3%
Total Population - Other	85	1,459	2,678
% Other	0.7%	1.4%	1.2%

TRAFFIC COUNTS

66th St N & 9th Ave N	39,000/day
-----------------------	------------

** Demographic data derived from 2020 ACS - US Census*

For More Information:

813-254-6756 | EXT 42

Property Webpage: www.properties.baystreetcommercial.com/307194-lease

Michael Braccia, P.A. | mike@baystreetcommercial.com