

For Lease

5,000 Sq. Ft.

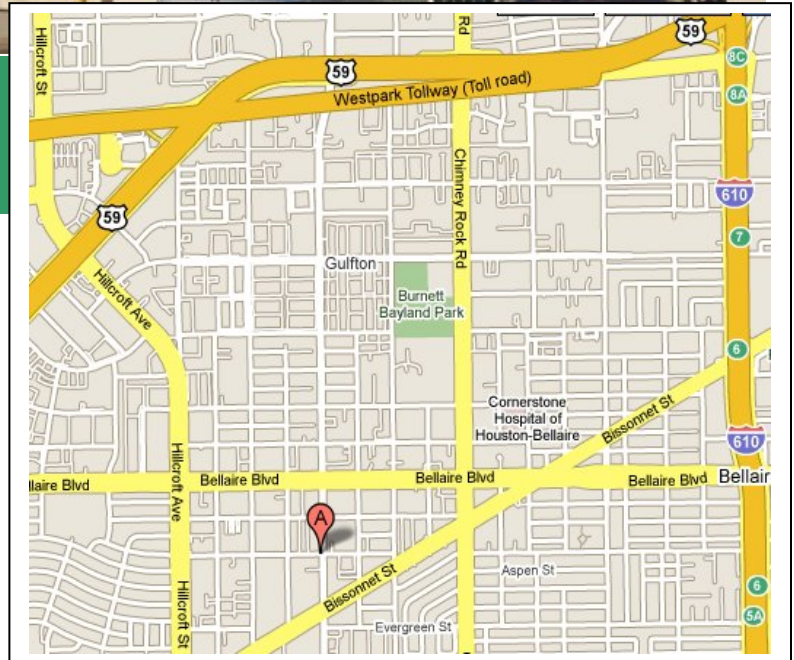


5906 Jessamine, B-4  
Houston, Texas

- Key Map: **531J**
- Square Feet: **5,000**
- Offices/RR: **4 Office, 2 RR**
- Overhead Doors: **Three 12' X 14'**
- Electrical Service: 3 phase

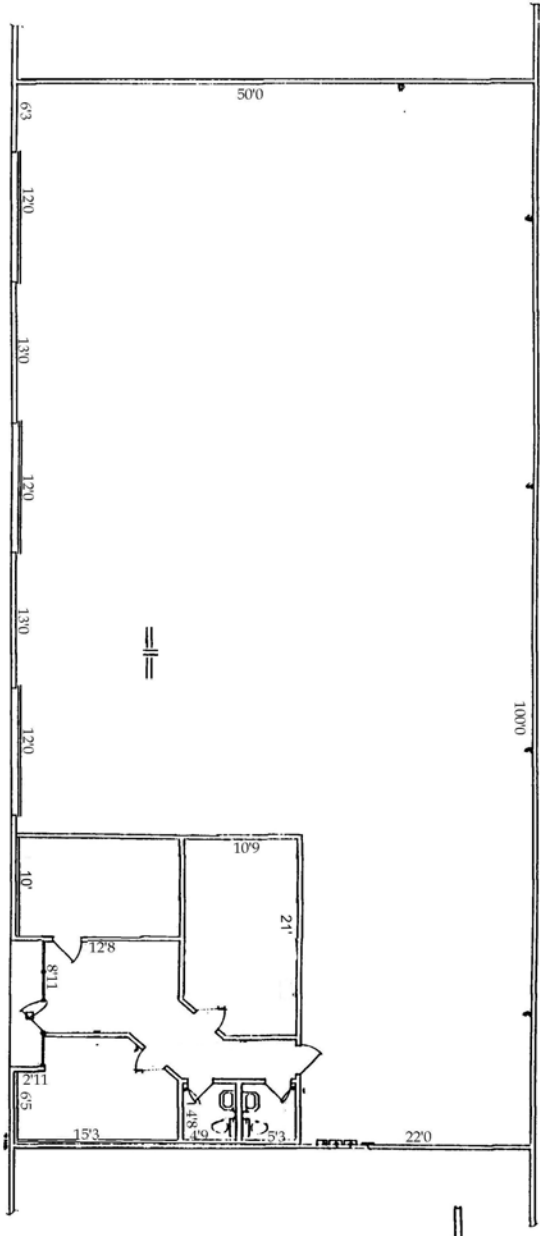
Great location in Southwest Houston with easy access to HWY 59, and 610 Loop.

**Samuel L. Bryant Investments**  
Office Warehouse for Lease



**FOR ADDITIONAL INFORMATION OR TO  
SCHEDULE A TOUR, PLEASE CONTACT:**

**Wayne F. Wilcox or Jeremy Bryant**  
[info@slbinvestments.com](mailto:info@slbinvestments.com)  
**713-660-6000**



FLOOR PLAN / ELECTRICAL - AC

**5906 JESSAMINE, B-4**

SAUEL - BRYANT INVESTMENTS	DATE	BY
FLOOR PLAN / ELECTRICAL - AC		
SITE: 5906 JESSAMINE		