

For Lease

THE CARPENTER VILLAGE

RETAIL SHOPPING CENTER FOR LEASE!

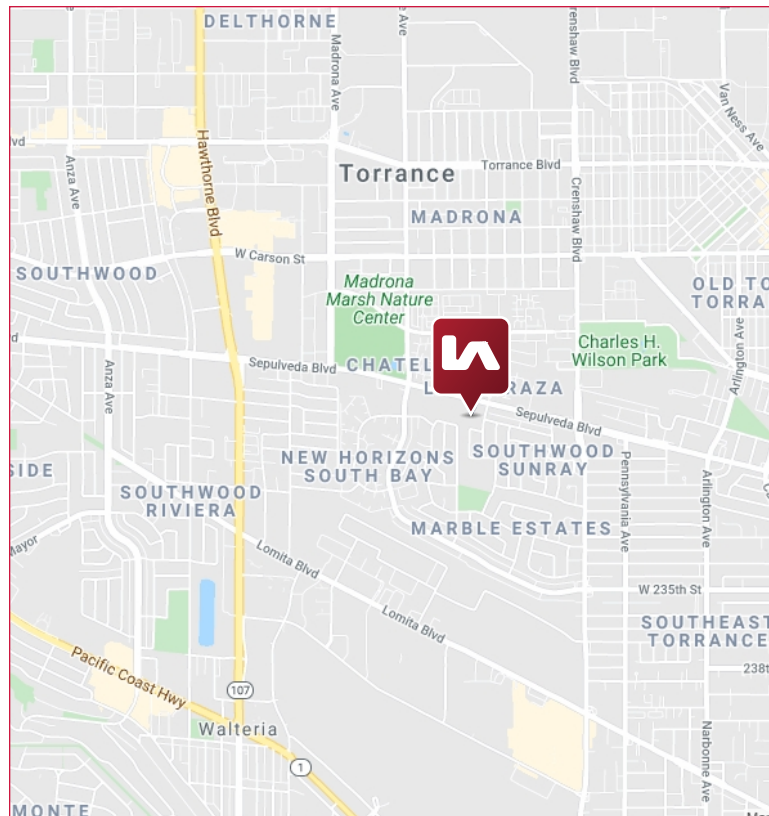


PROPERTY FEATURES

2808-2844 Sepulveda Blvd | Torrance, CA 90505

RATE: \$1.45 / SF + ± \$0.55 / SF NNN

- ▶ Excellent Retail, Office & Medical Space Available
- ▶ Spaces Range From ± 4,000 SF to ± 8,200 SF For Immediate Occupancy
- ▶ High Traffic Counts & Strong Demographics
- ▶ Aggressive Terms & Rates
- ▶ Ample Free Parking
- ▶ Sepulveda Blvd. Frontage
- ▶ Monument Sign In Front Of Center



FOR MORE INFORMATION, PLEASE CONTACT:

LEE & ASSOCIATES
COMMERCIAL REAL ESTATE SERVICES

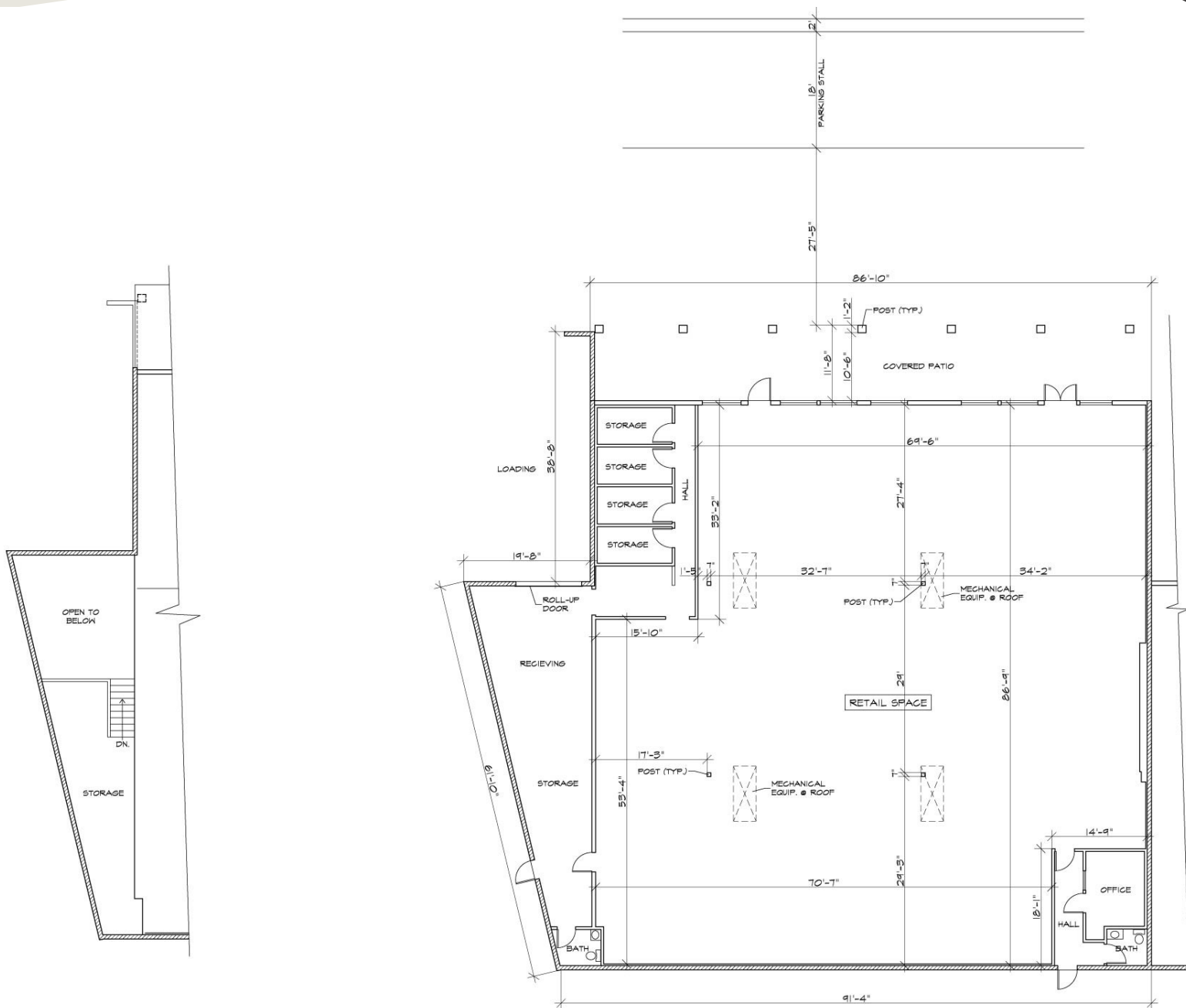
TOM TORABI PH: 310.965.1754
Principal | Lic ID# 00936845 E: ttorabi@leelalb.com

For Lease

THE CARPENTER VILLAGE

RETAIL SHOPPING CENTER FOR LEASE!

FLOOR PLAN



FOR MORE INFORMATION, PLEASE CONTACT:

LEE & ASSOCIATES
COMMERCIAL REAL ESTATE SERVICES

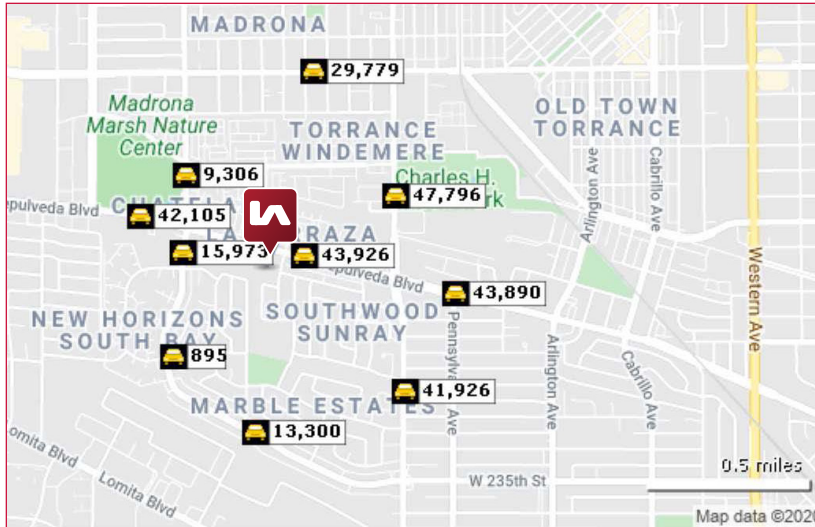
TOM TORABI PH: 310.965.1754
Principal | Lic ID# 00936845 E: ttorabi@leelalb.com

For Lease

THE CARPENTER VILLAGE

RETAIL SHOPPING CENTER FOR LEASE!

DEMOGRAPHICS



2019 SUMMARY	1 MILE	3 MILES	5 MILES
POPULATION	26,358	214,881	530,871
HOUSEHOLDS	10,489	78,996	189,002
AVG HOUSEHOLD SIZE	2.50	2.70	2.80
MEDIAN HOUSEHOLD INCOME	\$89,023	\$83,288	\$85,899
AVERAGE HOUSEHOLD INCOME	\$110,840	\$108,233	\$111,754
AVERAGE AGE	42.60	40.60	40.10
OWNER OCCUPIED HOUSING	6,488	43,670	106,753
RENTER OCCUPIED HOUSING	4,001	35,326	82,249



FOR MORE INFORMATION, PLEASE CONTACT:

LEE & ASSOCIATES
COMMERCIAL REAL ESTATE SERVICES

TOM TORABI PH: 310.965.1754
Principal | Lic ID# 00936845 E: ttorabi@leelalb.com