



354

254 UNION AVE

5 DEVELOPMENT OPPORTUNITY

326

316

254

**PROPERTY SUMMARY**

254 Union Ave NE

Address: 254 & 316 Union Ave NE  
Renton, WA 98059

Style: Mixed Use  
Commercial on the 1st floor  
Apartments on floors 2-5

Zoning CA—Commercial Arterial

Lot Size 73,694 square feet / 1.69 Acres

Current Use Single Family , 2 homes on property

Proposed use: Mixed Use  
7,458 square feet of commercial space on main floor,

96 Residential units consisting of  
8 units of 400+ square feet,  
60 units of 500+ square feet,  
8 units of 600+ square feet,  
4 units of 700+ square feet  
8 units of 800+ square feet  
4 units of 900+ square feet  
4 units of 1200+ square feet

Total residential square footage: 58,680

Parking: 116 parking spaces consisting of  
76 in building and underground  
40 uncovered parking



ESTIMATED VALUE OF	EACH UNIT	TOTAL VALUE
8 UNITS OF 400+ SQUARE FEET,	250K / UNIT	\$ 2 M
60 UNITS OF 500+ SQUARE FEET,	265K / UNIT	\$ 15.9 M
8 UNITS OF 600+ SQUARE FEET,	280K / UNIT	\$ 2.24 M
4 UNITS OF 700+ SQUARE FEET	350K / UNIT	\$ 1.4 M
8 UNITS OF 800+ SQUARE FEET	375K / UNIT	\$ 3 M
4 UNITS OF 900+ SQUARE FEET	400K / UNIT	\$ 1.6 M
4 UNITS OF 1200+ SQUARE FEET	470K / UNIT	\$ 1.88 M
COMMERCIAL SPACE		\$ 2.6M

**TOTAL VALUE OF COMPLETED UNITS \$ 30.62 MILLION**

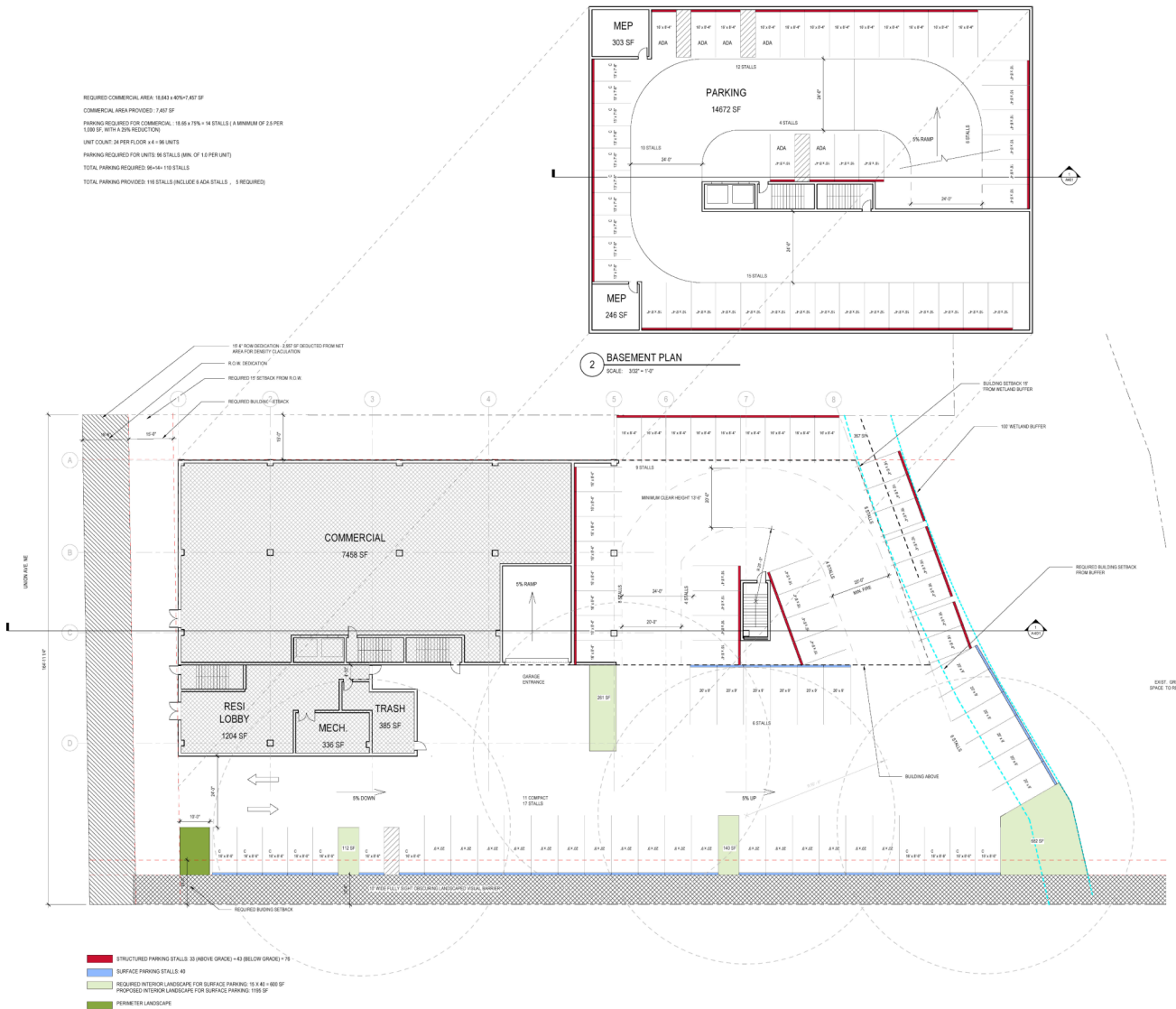
**Please Note: these figures are conservative. The asking / sale price could be higher.**



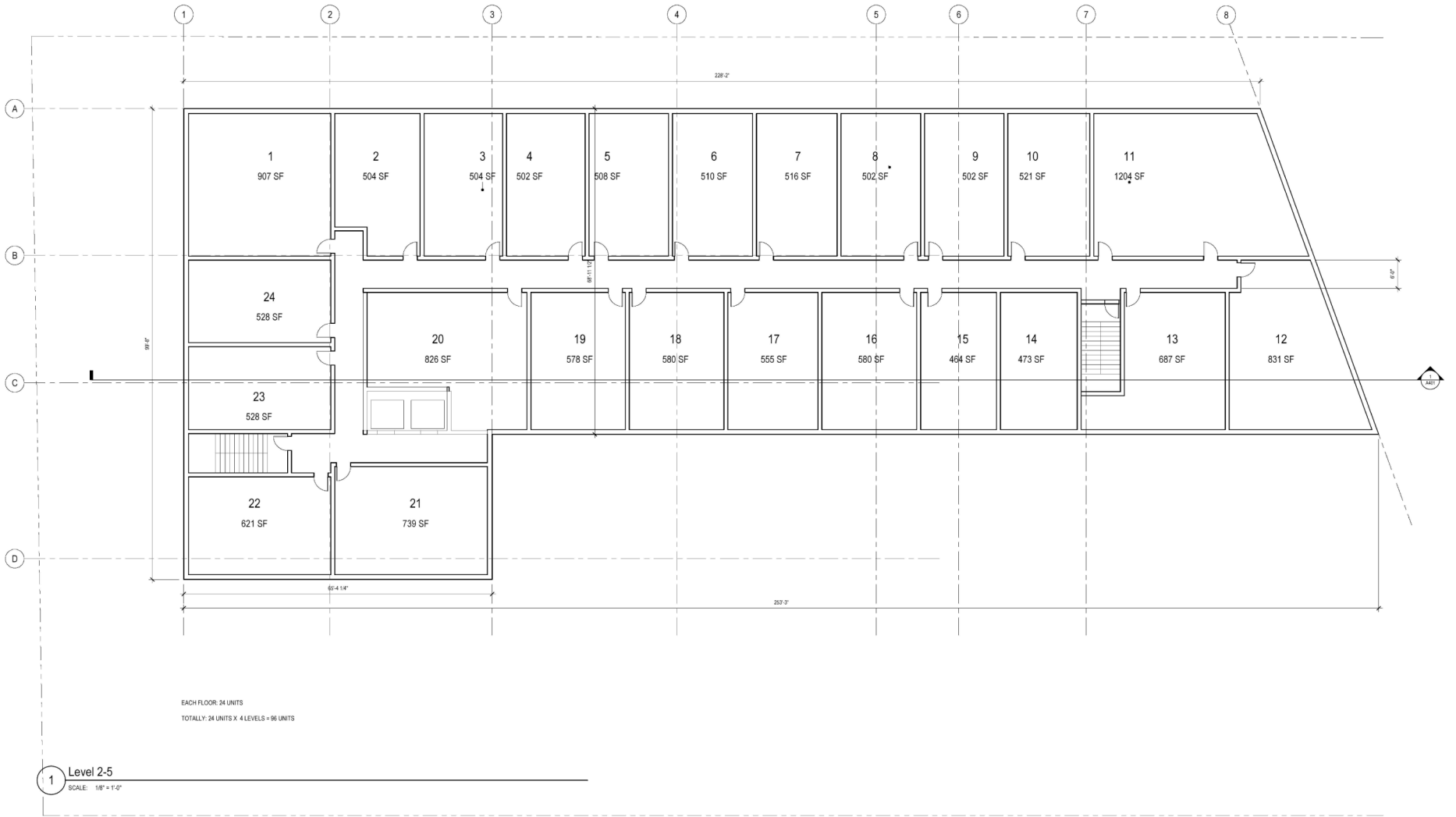
# Zoning

## CA / Commercial Arterial

The purpose of the Commercial Arterial Zone (CA) is to make the transition from Residential to Commercial zones. As such the property allows a mixed use of the property to be commercial and residential or pure commercial. The commercial aspect allows a wide variety of retail sales, services and other commercial activities.

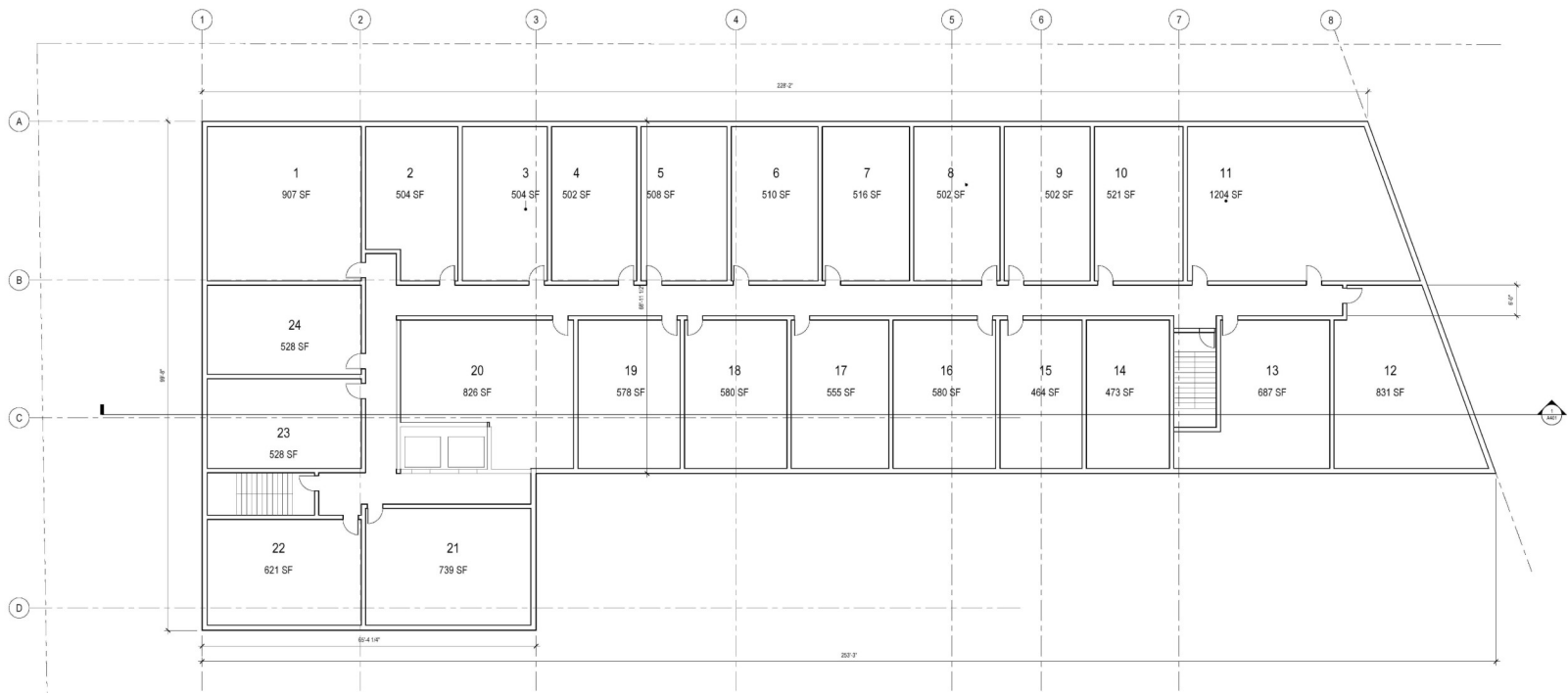


GROUND FLOOR PLAN AND  
BASEMENT PARKING FLOOR  
PLAN



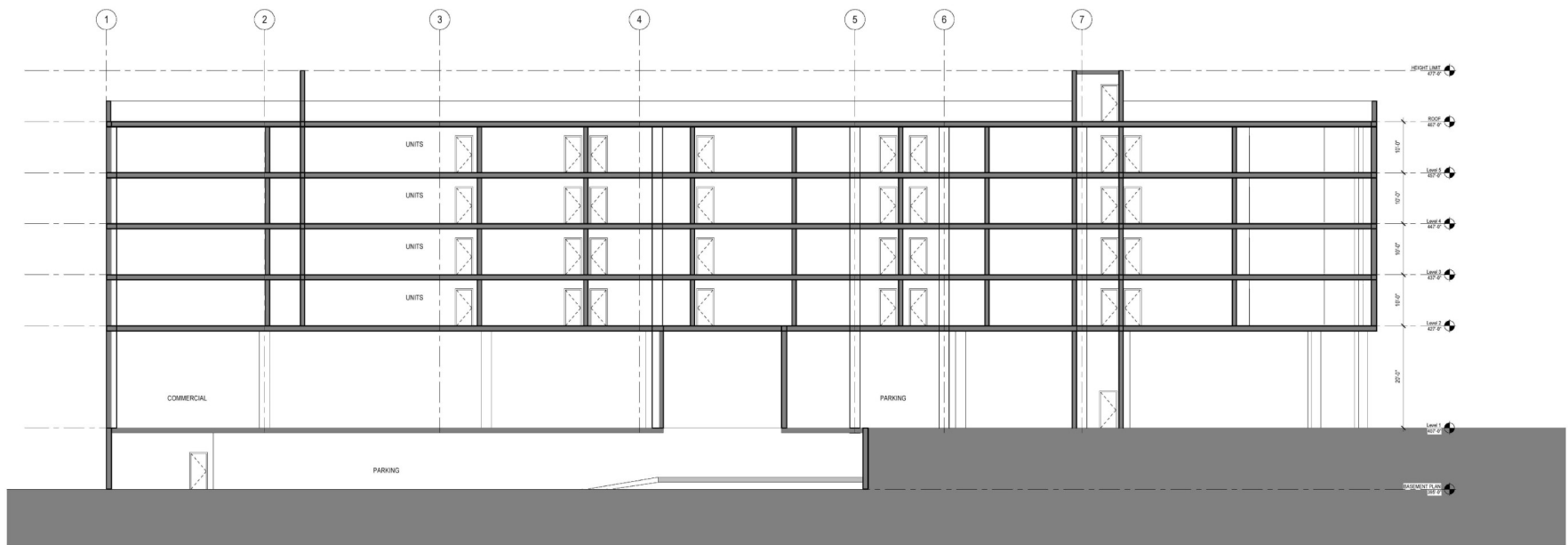
FLOOR PLANS FOR FLOORS 2-5





EACH FLOOR: 24 UNITS  
 TOTALLY: 24 UNITS X 4 LEVELS = 96 UNITS

1 Level 2-5  
 SCALE: 1/8" = 1'-0"



1 Section 1  
SCALE: 1/8" = 1'-0"

**For Further Information call**

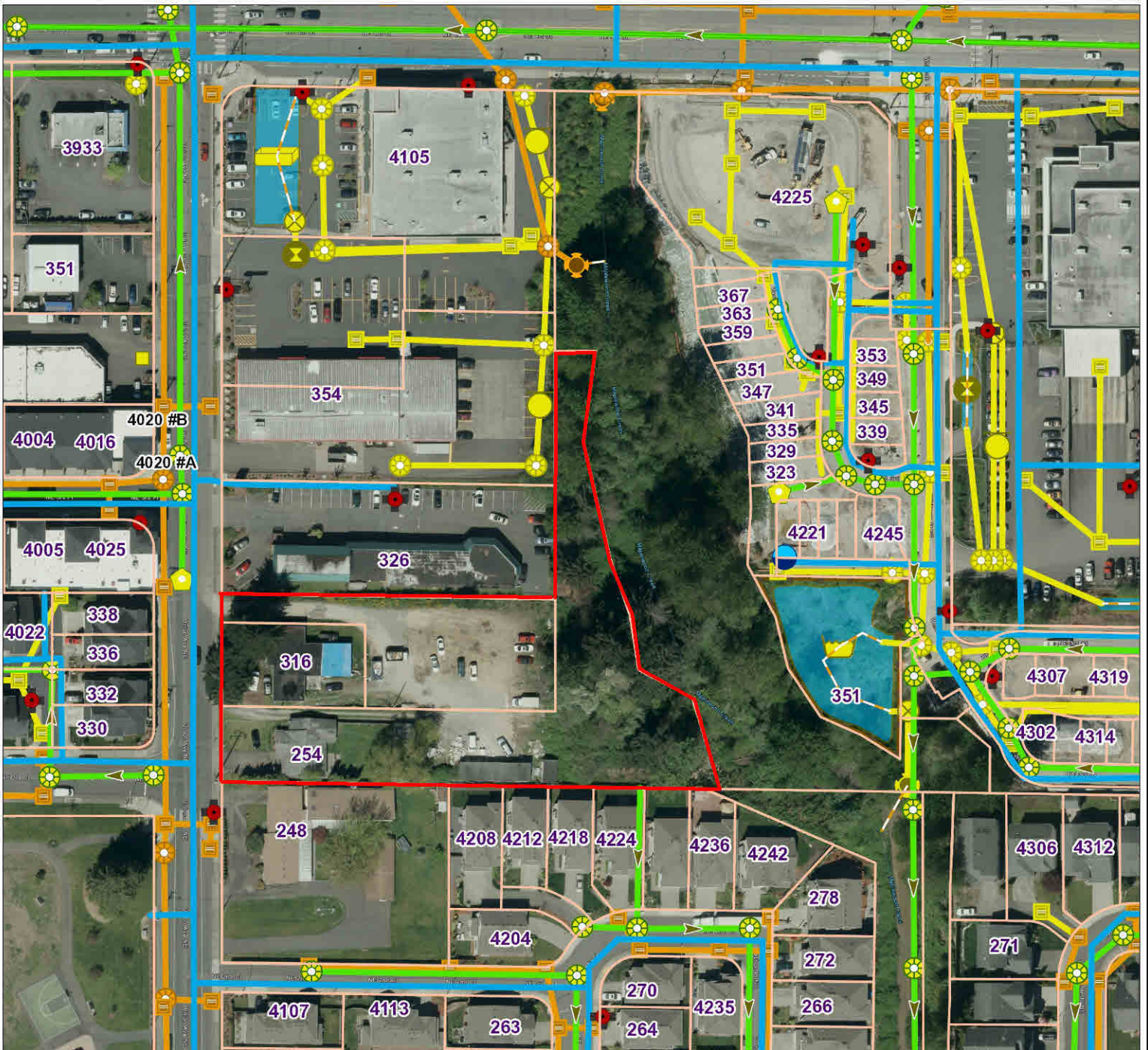
**Dien Le**

**Cell 425-652-6987**

**[dien@skylineproperties.com](mailto:dien@skylineproperties.com)**



# City of Renton Print map Template



## Notes

None



128 0 64 128 Feet

WGS\_1984\_Web\_Mercator\_Auxiliary\_Sphere

## Legend

- City and County Boundary
- Addresses
- Parcels
- Renton Fire Hydrant
- Hydrant Other System
- Control Valve
- Water Gravity Pipe
- Water Main
- Lift Station
- Clean Outs

- Renton
- Private
- Gravity Mains**
- Renton
- Private
- KC Metro Manholes
- KC Pressurized Mains
- KC Gravity Mains
- Network Structures**
- Inlet





# NEIGHBORHOOD PROFILE

# Demographics Report

## Subject Property Location

**Property Address** 254 UNION AVE NE  
**City, State & Zip** RENTON, WA 98059-5033  
**County** KING COUNTY  
**Mailing Address** 3435 122ND PL NE, BELLEVUE, WA 98005-1237

Report Date: 11/15/2024  
 Order ID: R166270798

**Property Use** Religious, Church, Worship  
 (synagogue, temple, parsonage)  
**Parcel Number** 518210-0012

Population		
Year	Zip 98059	National
2011	35,562	306,603,772
2020	40,693	326,569,308
Growth Rate	14.4%	6.5%
Growth Centile	76.4%	62.5%

Households		
Year	Zip 98059	National
2011	12,722	114,761,359
2020	14,016	122,354,219
Household Growth Rate	10.2%	6.6%
Average Household Size	2.9	2.6

Families		
Year	Zip 98059	National
2011	9,502	76,507,230
2020	10,847	79,849,830
Family Growth Rate	14.2%	4.4%

Age Distribution/Gender Ratio		
Age	Zip 98059	National
0-4	5.8%	6.0%
5-9	7.0%	6.1%
10-14	8.1%	6.5%
15-19	6.9%	6.5%
20-24	5.4%	6.7%
25-44	26.6%	26.5%
45-64	27.8%	25.6%
65-84	11.2%	14.1%
85+	1.3%	2.0%
Gender Ratio		
Male Ratio	49.2%	49.2%
Female Ratio	50.8%	50.8%

Household Income		
Income	Zip 98059	National
% < \$25K	6.7%	18.4%
% \$25K-50K	11.4%	20.6%
% \$50K-100K	27.1%	30.0%
% \$100K-150K	17.2%	15.6%
% >\$150K	14.2%	7.1%

Median Household Income		
Year	Zip 98059	National
2020	\$109,565.00	\$64,994.00
Per Capita Income	\$50,437.35	\$34,299.49

Household Income Centile		
National		94.1%
State		92.2%

## Nearby Neighbors Report

### Subject Property Location

**Property Address** 254 UNION AVE NE  
**City, State & Zip** RENTON, WA 98059-5033  
**County** KING COUNTY  
**Mailing Address** 3435 122ND PL NE, BELLEVUE, WA 98005-1237

Report Date: 11/15/2024  
 Order ID: R166270799

**Property Use** Religious, Church, Worship  
 (synagogue, temple, parsonage)  
**Parcel Number** 518210-0012

Subject Property					
<b>Address</b>	254 UNION AVE NE, RENTON, WA 98059		<b>APN</b>	518210-0012	
<b>Owner</b>	UNION AND 3RD LLC		<b>Lot Size (SF/AC)</b>	44,736/1.03	
<b>Bedrooms</b>	3	<b>Year Built</b>	1950	<b>Living Area (SF)</b>	1,560
<b>Bathrooms/Partial</b>	1	<b>Garage/No. of Cars</b>		<b>Phones</b>	

Nearby Neighbor #1					
<b>Address</b>	354 UNION AVE NE, RENTON, WA 98059		<b>APN</b>	518210-0010	
<b>Owner</b>	LS PROPDROP LLC		<b>Lot Size (SF/AC)</b>	33,613/ 77	
<b>Bedrooms</b>	0	<b>Year Built</b>	1988	<b>Living Area (SF)</b>	13,300
<b>Bathrooms/Partial</b>		<b>Garage/No. of Cars</b>		<b>Phones</b>	

Nearby Neighbor #2					
<b>Address</b>	359 VASHON CT NE, RENTON, WA 98059		<b>APN</b>	937400-0180	
<b>Owner</b>	OREGAS RAMIL		<b>Lot Size (SF/AC)</b>	1,075/ .02	
<b>Bedrooms</b>	2	<b>Year Built</b>	2016	<b>Living Area (SF)</b>	1,310
<b>Bathrooms/Partial</b>	1/2	<b>Garage/No. of Cars</b>	Underground/Basement/2	<b>Phones</b>	

Nearby Neighbor #3					
<b>Address</b>	363 VASHON CT NE, RENTON, WA 98059		<b>APN</b>	937400-0190	
<b>Owner</b>	NGUYEN QUANG VAN		<b>Lot Size (SF/AC)</b>	1,050/ .02	
<b>Bedrooms</b>	2	<b>Year Built</b>	2016	<b>Living Area (SF)</b>	1,310
<b>Bathrooms/Partial</b>	1/2	<b>Garage/No. of Cars</b>	Underground/Basement/2	<b>Phones</b>	

Nearby Neighbor #4					
<b>Address</b>	355 VASHON CT NE, RENTON, WA 98059		<b>APN</b>	937400-0170	
<b>Owner</b>	REYES REALTY LLC,		<b>Lot Size (SF/AC)</b>	1,060/ .02	
<b>Bedrooms</b>	2	<b>Year Built</b>	2016	<b>Living Area (SF)</b>	1,310
<b>Bathrooms/Partial</b>	1/2	<b>Garage/No. of Cars</b>	Underground/Basement/2	<b>Phones</b>	

Nearby Neighbor #5					
<b>Address</b>	367 VASHON CT NE, RENTON, WA 98059		<b>APN</b>	937400-0200	
<b>Owner</b>	LOZIER AT WHITMAN COURT LLC		<b>Lot Size (SF/AC)</b>	1,215/ .03	
<b>Bedrooms</b>	2	<b>Year Built</b>	2016	<b>Living Area (SF)</b>	1,340
<b>Bathrooms/Partial</b>	1/2	<b>Garage/No. of Cars</b>	Underground/Basement/2	<b>Phones</b>	(425) 289-8056

Nearby Neighbor #6					
<b>Address</b>	351 VASHON CT NE, RENTON, WA 98059		<b>APN</b>	937400-0160	
<b>Owner</b>	KIM JEONG MI		<b>Lot Size (SF/AC)</b>	1,070/ .02	
<b>Bedrooms</b>	2	<b>Year Built</b>	2016	<b>Living Area (SF)</b>	1,310
<b>Bathrooms/Partial</b>	1/2	<b>Garage/No. of Cars</b>	Underground/Basement/2	<b>Phones</b>	

Nearby Neighbor #7					
<b>Address</b>	347 VASHON CT NE, RENTON, WA 98059		<b>APN</b>	937400-0150	
<b>Owner</b>	SAKALA SHARAT V		<b>Lot Size (SF/AC)</b>	1,675/ .04	
<b>Bedrooms</b>	2	<b>Year Built</b>	2016	<b>Living Area (SF)</b>	1,340
<b>Bathrooms/Partial</b>	1/2	<b>Garage/No. of Cars</b>	Underground/Basement/2	<b>Phones</b>	

Nearby Neighbor #8					
<b>Address</b>	341 VASHON CT NE, RENTON, WA 98059		<b>APN</b>	937400-0140	
<b>Owner</b>	ACCAD AHMAD AL		<b>Lot Size (SF/AC)</b>	1,590/ .04	
<b>Bedrooms</b>	2	<b>Year Built</b>	2016	<b>Living Area (SF)</b>	1,340
<b>Bathrooms/Partial</b>	1/2	<b>Garage/No. of Cars</b>	Underground/Basement/2	<b>Phones</b>	



Nearby Neighbor #9					
Address	335 VASHON CT NE, RENTON, WA 98059			APN	937400-0130
Owner	DASGUPTA SOUMABRATA			Lot Size (SF/AC)	1,070/.02
Bedrooms	2	Year Built	2016	Living Area (SF)	1,310
Bathrooms/Partial	1/2	Garage/No. of Cars	Underground/Basement/2	Phones	

Nearby Neighbor #10					
Address	329 VASHON CT NE, RENTON, WA 98059			APN	937400-0120
Owner	COPELAND AARON; COPELAND MIRIAM			Lot Size (SF/AC)	1,050/.02
Bedrooms	2	Year Built	2016	Living Area (SF)	1,310
Bathrooms/Partial	1/2	Garage/No. of Cars	Underground/Basement/2	Phones	

Nearby Neighbor #11					
Address	323 VASHON CT NE, RENTON, WA 98059			APN	937400-0110
Owner	BRADEN LUCAS WAYNE			Lot Size (SF/AC)	1,415/.03
Bedrooms	2	Year Built	2016	Living Area (SF)	1,340
Bathrooms/Partial	1/2	Garage/No. of Cars	Underground/Basement/2	Phones	

Nearby Neighbor #12					
Address	326 UNION AVE NE, RENTON, WA 98059			APN	518210-0013
Owner	UNION SQUARE BUSINESS PARK			Lot Size (SF/AC)	29,360/.67
Bedrooms	0	Year Built	1979	Living Area (SF)	7,544
Bathrooms/Partial		Garage/No. of Cars		Phones	

Nearby Neighbor #13					
Address	4215 NE 3RD LN, RENTON, WA 98059			APN	937400-0100
Owner	MEARS DOUG E			Lot Size (SF/AC)	1,025/.02
Bedrooms	3	Year Built	2016	Living Area (SF)	1,590
Bathrooms/Partial	1/3	Garage/No. of Cars	Underground/Basement/1	Phones	

Nearby Neighbor #14					
Address	4105 NE 4TH ST, RENTON, WA 98059			APN	518210-0008
Owner	WALGREEN CO			Lot Size (SF/AC)	47,001/1.08
Bedrooms	0	Year Built	2009	Living Area (SF)	14,820
Bathrooms/Partial		Garage/No. of Cars		Phones	

Nearby Neighbor #15					
Address	4221 SE 3RD PL, RENTON, WA 98059			APN	937400-0090
Owner	FANG KENNY J; NG TSZ MEI			Lot Size (SF/AC)	845/.02
Bedrooms	3	Year Built	2016	Living Area (SF)	1,560
Bathrooms/Partial	1/3	Garage/No. of Cars	Underground/Basement/1	Phones	

# Public Schools Report

## Subject Property Location

**Property Address** 254 UNION AVE NE  
**City, State & Zip** RENTON, WA 98059-5033  
**County** KING COUNTY  
**Mailing Address** 3435 122ND PL NE, BELLEVUE, WA 98005-1237

**Report Date:** 11/15/2024  
**Order ID:** R166270800

**Property Use** Religious, Church, Worship (synagogue, temple, parsonage)  
**Parcel Number** 518210-0012

## Public School Summary

School Name	Grades	Distance from Subject Property
Maplewood Heights Elementary Scho	Grade KG - Grade 5	0.83 miles
Highlands Elementary School	Grade KG - Grade 5	0.97 miles
Mcknight Middle School	Grade 6 - Grade 8	1.51 miles
Hazen Senior High School	Grade 9 - Grade 12	1.11 miles

## MAPLEWOOD HEIGHTS ELEMENTARY SCHO

<b>Address</b>	13430 144TH AVE SE RENTON, WA 98059-4912	<b>Kindergarten</b>	112
<b>Phone Number</b>	425-204-4750	<b>Grade 1</b>	92
<b>Distance from Subject Property</b>	0.83 miles	<b>Grade 2</b>	91
<b>Grades</b>	Grade KG - Grade 5	<b>Grade 3</b>	101
<b>Student Teacher Ratio</b>	1:20.7	<b>Grade 4</b>	107
<b>Full Time Equivalent Administrators</b>	30.16	<b>Grade 5</b>	121
<b>API Score</b>	N/A	<b>Total</b>	624

## HIGHLANDS ELEMENTARY SCHOOL

<b>Address</b>	2720 NE 7TH ST RENTON, WA 98056-3034	<b>Kindergarten</b>	122
<b>Phone Number</b>	425-204-4600	<b>Grade 1</b>	93
<b>Distance from Subject Property</b>	0.97 miles	<b>Grade 2</b>	95
<b>Grades</b>	Grade KG - Grade 5	<b>Grade 3</b>	99
<b>Student Teacher Ratio</b>	1:20.7	<b>Grade 4</b>	89
<b>Full Time Equivalent Administrators</b>	28.77	<b>Grade 5</b>	97
<b>API Score</b>	N/A	<b>Total</b>	595

## MCKNIGHT MIDDLE SCHOOL

<b>Address</b>	1200 EDMONDS AVE NE RENTON, WA 98056-2763	<b>Grade 6</b>	351
<b>Phone Number</b>	425-204-3600	<b>Grade 7</b>	384
<b>Distance from Subject Property</b>	1.51 miles	<b>Grade 8</b>	377
<b>Grades</b>	Grade 6 - Grade 8	<b>Total</b>	1112
<b>Student Teacher Ratio</b>	1:20.2		
<b>Full Time Equivalent Administrators</b>	55.1		
<b>API Score</b>	N/A		

## HAZEN SENIOR HIGH SCHOOL

<b>Address</b>	1101 HOQUIAM AVE NE RENTON, WA 98059-4314	<b>Grade 9</b>	456
<b>Phone Number</b>	425-204-4200	<b>Grade 10</b>	309
<b>Distance from Subject Property</b>	1.11 miles	<b>Grade 11</b>	345
<b>Grades</b>	Grade 9 - Grade 12	<b>Grade 12</b>	285
<b>Student Teacher Ratio</b>	1:21.1	<b>Total</b>	1395
<b>Full Time Equivalent Administrators</b>	66.24		
<b>API Score</b>	N/A		

## SCHOOL DISTRICTS

RENTON SCHOOL DISTRICT					
<b>Address</b>	300 SW 7TH ST RENTON, WA 98055-2307	<b>Pupil Teacher Ratio</b>	19.5:1	<b>No of Teacher Aids</b>	153.2
<b>Phone Number</b>	425-204-2340	<b>Total Enrollment</b>	14,219	<b>No of Guidance Counselors</b>	28.4
<b>Grades</b>	PK- 12	<b>No of High School Graduates</b>	745	<b>No of School Administrators</b>	33.2
		<b>Number of Teachers</b>	729.7	<b>Number of Schools</b>	26

## About

### Public Schools

The Public School Report lists schools closest to the subject property. For a complete listing of schools in your area, please go to <http://www.nces.ed.gov/globallocator>.

### API Index

The Academic Performance Index (API) measures academic performance and growth of schools, which includes results of the Stanford 9. The API reports a numeric scale that ranges from 200 to 1000. A school's score or position on the API indicates the level of a school's performance.





# AREA INFORMATION

---

# COMMUNITY SERVICES KING COUNTY

---

## CAR RACING (for King, Pierce & Snohomish Counties)

* Pacific Raceways	31001 - 144th Ave SE, Kent	253-639-5927	<a href="http://pacificraceways.com">pacificraceways.com</a>
* Int'l Race Drivers' Club	1107 S 4th St, Renton	206-783-2641	<a href="http://www.irdc-racing.com">www.irdc-racing.com</a>

## CHAMBER OF COMMERCE

* Auburn	108 S Division St, Ste B	253-833-0700	<a href="http://www.auburnareawa.org">www.auburnareawa.org</a>
* Bellevue	302 Bellevue Square	425-454-2464	<a href="http://www.bellevuechamber.org">www.bellevuechamber.org</a>
* Bothell	10017 NE 185th St	425-485-4353	<a href="http://www.bothellchamber.com">www.bothellchamber.com</a>
* Burien	14220 Interurban Ave S, Ste 134, Tukwila	206-575-1633	<a href="http://swkcc.org">swkcc.org</a> (Community Profiles)
* Covington	27112 - 167th Pl SE, Ste 102	253-631-6117	<a href="http://www.covingtonchamber.org">www.covingtonchamber.org</a>
* Des Moines	14220 Interurban Ave S, Ste 134, Tukwila	206-575-1633	<a href="http://swkcc.org">swkcc.org</a> (Community Profiles)
* Enumclaw	1421 Cole St	360-825-7666	<a href="http://www.enumclawchamber.com">www.enumclawchamber.com</a>
* Federal Way	31919 - 1st Ave S, Ste 202	253-838-2605	<a href="http://www.federalwaychamber.com">www.federalwaychamber.com</a>
* Issaquah	155 NW Gilman Blvd	425-392-7024	<a href="http://www.issaquahchamber.com">www.issaquahchamber.com</a>
* Kent	524 W Meeker St, Ste 1	253-854-1770	<a href="http://www.kentchamber.com">www.kentchamber.com</a>
* Kirkland	233 Kirkland Ave, Ste 102	425-822-7066	<a href="http://www.kirklandchamber.org">www.kirklandchamber.org</a>
* Maple Valley	23745 - 225th Way SE, Ste 205	425-432-0222	<a href="http://www.maplevalley.com">www.maplevalley.com</a>
* Mercer Island	7605 SE 27th St, Ste 109	206-232-3404	<a href="http://www.mercerislandchamber.com">www.mercerislandchamber.com</a>
* Newcastle	6947 Coal Creek Parkway SE, #150	425-462-3351	<a href="http://www.newcastlecc.com">www.newcastlecc.com</a>
* Redmond	16210 NE 80th St	425-885-4014	<a href="http://www.redmondchamber.com">www.redmondchamber.com</a>
* Renton	300 Rainier Ave N	425 226 4560	<a href="http://www.gorenton.com">www.gorenton.com</a>
* SeaTac	14220 Interurban Ave S, Ste 134, Tukwila	206 575 1633	<a href="http://swkcc.org">swkcc.org</a> (Community Profiles)
* Seattle	1301 Fifth Ave, Ste 2500	206-389-7200	<a href="http://www.seattlechamber.com">www.seattlechamber.com</a>
* SW King County	14220 Interurban Ave S, Ste 134, Tukwila	206-575-1633	<a href="http://swkcc.org">swkcc.org</a> (Community Profiles)
* Snoqualmie Valley	38767 SE River St	425-888-4440	<a href="http://www.snovalley.org">www.snovalley.org</a>
* Tukwila	14220 Interurban Ave S, Ste 134	206-575-1633	<a href="http://swkcc.org">swkcc.org</a> (Community Profiles)
* Woodinville	17401 - 133rd Ave NE	425-481-8300	<a href="http://www.woodinvillechamber.org">www.woodinvillechamber.org</a>

## CITY HALL

Additional City and County information can be found at [www.mrsc.org](http://www.mrsc.org)

* Auburn	25 W Main St	253-931-3000	<a href="http://www.auburnwa.gov">www.auburnwa.gov</a>
* Bellevue	450 - 110th Ave NE	425-452-6800	<a href="http://www.bellevuewa.gov">www.bellevuewa.gov</a>
* Bothell	18305 - 101st Ave NE	425-486-3256	<a href="http://www.ci.bothell.wa.us">www.ci.bothell.wa.us</a>
* Burien	400 SW 152nd, Ste 300	206-241-4647	<a href="http://www.burien.wa.gov">www.burien.wa.gov</a>
* Covington	16720 SE 271st St, Ste 100	253-638-1110	<a href="http://www.ci.covington.wa.us">www.ci.covington.wa.us</a>
* Des Moines	21630 - 11th Ave S	206-878-4595	<a href="http://www.desmoineswa.gov">www.desmoineswa.gov</a>
* Enumclaw	1339 Griffin Ave	360-825-3591	<a href="http://www.ci.enumclaw.wa.us">www.ci.enumclaw.wa.us</a>
* Federal Way	33325 - 8th Ave S	253-835-7000	<a href="http://www.cityoffederalway.com">www.cityoffederalway.com</a>
* Issaquah	130 E Sunset Way	425-837-3000	<a href="http://www.ci.issaquah.wa.us">www.ci.issaquah.wa.us</a>
* Kenmore	18120 - 68th Ave NE	425-398-8900	<a href="http://www.cityofkenmore.com">www.cityofkenmore.com</a>
* Kent	220 Fourth Ave S	253-856-5200	<a href="http://www.kentwa.gov">www.kentwa.gov</a>
* Kirkland	123 Fifth Ave	425-587-3000	<a href="http://www.ci.kirkland.wa.us">www.ci.kirkland.wa.us</a>
* Maple Valley	22017 SE Wax Rd, Ste 200	425-413-8800	<a href="http://www.ci.maplevalley.wa.us">www.ci.maplevalley.wa.us</a>
* Mercer Island	9611 SE 36th St	206-275-7793	<a href="http://www.mercerislandgov.org">www.mercerislandgov.org</a>
* North Bend	211 Main Ave N	425-888-1211	<a href="http://www.ci.north-bend.wa.us">www.ci.north-bend.wa.us</a>
* Redmond	15670 NE 85th	425-556-2900	<a href="http://www.ci.redmond.wa.us">www.ci.redmond.wa.us</a>
* Renton	1055 S Grady Way	425-430-6400	<a href="http://www.ci.renton.wa.us">www.ci.renton.wa.us</a>
* Sammamish	801 - 228th Ave SE	425-295-0500	<a href="http://www.ci.sammamish.wa.us">www.ci.sammamish.wa.us</a>
* SeaTac	4800 S 188th St	206-973-4800	<a href="http://www.ci.seatac.wa.us">www.ci.seatac.wa.us</a>
* Seattle	600 - 4th Ave	206-684-8888	<a href="http://www.cityofseattle.net">www.cityofseattle.net</a>
* Shoreline	17500 Midvale Ave N	206-801-2700	<a href="http://www.cityofshoreline.com">www.cityofshoreline.com</a>
* Tukwila	6200 Southcenter Blvd	206-433-1800	<a href="http://www.ci.tukwila.wa.us">www.ci.tukwila.wa.us</a>
* Woodinville	17301 - 133rd Ave NE	425-489-2700	<a href="http://www.ci.woodinville.wa.us">www.ci.woodinville.wa.us</a>

# COMMUNITY SERVICES KING COUNTY

## GOLF COURSES

Additional golf course information, advice, lessons and answers to other questions can be found at: [golfwashington.com](http://golfwashington.com), [golfersweb.com](http://golfersweb.com), and [seattlegolfguide.com](http://seattlegolfguide.com).

### 18 Hole Public Courses

* Auburn Golf Course	29630 Green River Rd SE, Auburn	253-833-2350	<a href="http://www.auburngolf.org">www.auburngolf.org</a>
* Bellevue Municipal Golf	5500 - 140th NE, Bellevue	425-452-7250	<a href="http://www.bellevuepgc.com">www.bellevuepgc.com</a>
* Druids Glen Golf Course	29925 - 207th Ave SE, Kent	253-638-1200	<a href="http://www.druidsglengolf.com">www.druidsglengolf.com</a>
* Elk Run Golf Course	22500 SE 275th Pl, Maple Valley	425-432-8800	<a href="http://www.elkrungolf.com">www.elkrungolf.com</a>
* Foster Golf Links	13500 Interurban Ave S, Tukwila	206-242-4221	<a href="http://www.fostergolfinks.com">www.fostergolfinks.com</a>
* Jackson Park Golf Course	1000 NE 135th, Seattle	206-363-4747	<a href="http://www.premiergc.com">www.premiergc.com</a>
* Jefferson Park Golf Course	4101 Beacon Ave S, Seattle	206-762-4513	<a href="http://www.premiergc.com">www.premiergc.com</a>
* Lake Wilderness GC	25400 Witte Rd SE, Maple Valley	425-432-9405	<a href="http://www.lakewildernessgc.com">www.lakewildernessgc.com</a>
* Maplewood Golf Course	4050 SE Maple Valley Hwy, Renton	425-430-6800	
* Mount Si Golf Course	9010 Boalch Ave SE, Snoqualmie	425-391-4926	<a href="http://www.mtsigolf.com">www.mtsigolf.com</a>
* Golf Club at Newcastle	15500 Six Penny Lane, Newcastle	425-793-5566	<a href="http://www.newcastlegolf.com">www.newcastlegolf.com</a>
* Riverbend Golf Course	2019 W Meeker, Kent	253-854-3673	<a href="http://www.ci.kent.wa.us/riverbend">www.ci.kent.wa.us/riverbend</a>
* Snoqualmie Falls GC	35109 SE Fish Hatchery Rd, Fall City	425-222-5244	<a href="http://www.snoqualmiefallsgolf.com">www.snoqualmiefallsgolf.com</a>
* Trilogy Golf Course	11825 Trilogy Pkwy NE, Redmond	425-284-1560	<a href="http://www.trilogygolfclub.com">www.trilogygolfclub.com</a>
* Twin Rivers Golf Course	4446 Preston-Fall City Rd SE, Fall City	425-222-7575	<a href="http://twinriversgolfcourse.com">twinriversgolfcourse.com</a>
* Tye Valley Golf Course	2401 S 192nd, Seatac	206-878-3540	
* Wayne Golf Course	16721 - 96th Ave NE, Bothell	425-485-6237	
* Washington Nat'l GC	14330 SE Husky Way, Auburn	253-333-5000	<a href="http://washingtonnationalgolfclub.com">washingtonnationalgolfclub.com</a>
* West Seattle Golf Course	4470 - 35th SW, Seattle	206-935-5187	<a href="http://www.premiergc.com">www.premiergc.com</a>
* Willows Run Golf Course	10442 Willows Rd NE, Redmond	425-883-1200	<a href="http://www.willowsrun.com">www.willowsrun.com</a>

### 9 Hole Public Courses

* Crossroads Golf Course	15801 NE 15th St, Bellevue	425-452-4873	
* Green Lake Golf Course	5701 W Greenlake Way N, Seattle	206-632-2280	
* Interbay Golf Course	2501 - 15th Ave W, Seattle	206-285-2200	<a href="http://www.premiergc.com">www.premiergc.com</a>
* Jade Greens Golf Course	18330 SE Lake Holm Rd, Auburn	253-931-8562	<a href="http://www.jadegreens.com">www.jadegreens.com</a>
* Cascade Golf Course	14319 436th Ave SE, North Bend	425-888-4653	<a href="http://www.cascadegolfcourse.com">www.cascadegolfcourse.com</a>
* Links at Olson Mansion	21401 - 244th Ave SE, Maple Valley	425-413-1900	<a href="http://www.olsonmansion.com">www.olsonmansion.com</a>
* Tall Chief Golf Course	1313 W Snoqualmie River Rd SE, Fall City	425-222-5911	<a href="http://www.tallchiefgolfcourse.com">www.tallchiefgolfcourse.com</a>
* Wellington Hills GC	7026 - 240th St SE, Woodinville	425-485-5589	<a href="http://www.wellingtonhillsgcc.com">www.wellingtonhillsgcc.com</a>

### 18 Hole Private Courses

* Bear Creek Country Club	13737 - 202nd Ave NE, Woodinville	425-883-4770	<a href="http://www.bearcreekcc.com">www.bearcreekcc.com</a>
* Broadmoor Golf Club	2340 Broadmoor Dr E, Seattle	206-325-5600	<a href="http://broadmoorgolfclub.com">broadmoorgolfclub.com</a>
* Fairwood Golf & CC	17070 - 140th SE, Renton	425-226-7890	<a href="http://www.fairwood.org">www.fairwood.org</a>
* Glendale Golf & CC	13440 Main St, Bellevue	425-746-7944	<a href="http://www.glendalecc.com">www.glendalecc.com</a>
* Inglewood Country Club	6505 Inglewood Rd NE, Kenmore	425-488-8800	<a href="http://www.inglewoodgolfclub.com">www.inglewoodgolfclub.com</a>
* Members Club @ Alderra	29125 SE Duthie Hill Rd, Fall City	425-222-7828	<a href="http://themembersclubatalderra.com">themembersclubatalderra.com</a>
* Meridian Valley Golf & CC	24830 - 136th Ave SE, Kent	253-631-3133	<a href="http://www.meridianvalleycc.com">www.meridianvalleycc.com</a>
* Mill Creek Golf & CC	15550 Country Club Dr, Mill Creek	206-624-2050	<a href="http://www.millcreek.cc">www.millcreek.cc</a>
* Overlake Golf & CC	8000 NE St, Medina	425-454-7971	<a href="http://www.overlakegolfcc.com">www.overlakegolfcc.com</a>
* Plateau Golf & CC	25625 Plateau Dr, Sammamish	425-868-6063	<a href="http://www.plateauclub.com">www.plateauclub.com</a>
* Rainier Golf & CC	11133 Des Moines Mem Dr S, Seattle	206-242-2800	<a href="http://www.rainiergolfcc.com">www.rainiergolfcc.com</a>
* Sahalee Country Club	21200 Sahalee CC Dr, Redmond	425-868-8800	<a href="http://www.sahalee.com">www.sahalee.com</a>
* Sand Point Country Club	8333 - 55th NE, Seattle	206-523-4994	<a href="http://www.sandpointcc.com">www.sandpointcc.com</a>
* Seattle Golf & CC	210 NW 145th, Seattle	206-363-5444	<a href="http://www.seattlegolfclub.com">www.seattlegolfclub.com</a>
* Snoq Ridge TPC	36005 SE Ridge Street, Snoqualmie	425-396-6000	<a href="http://www.TPCSR.com">www.TPCSR.com</a>
* Twin Lakes Golf & CC	3538 SW 320th, Federal Way	253-927-4440	<a href="http://www.tiwnlakesgolf.net">www.tiwnlakesgolf.net</a>

### 9 Hole Private Courses

* Brae Burn Golf & CC	2409 - 182nd Ave NE, Redmond	425-378-9355	
* Glen Acres Golf Club	1000 S 112th St, Seattle	206-244-3786	<a href="http://www.glenacresgolf.com">www.glenacresgolf.com</a>
* Tam O'Shanter Golf & CC	1313 - 183rd Ave NE, Bellevue	425-746-1578	<a href="http://www.tamoshanter.net">www.tamoshanter.net</a>

## HORSE RACING (for King, Pierce & Snohomish Counties)

* Emerald Downs	2300 Emerald Downs Dr, Auburn	253-288-7000	<a href="http://www.emeralddowns.com">www.emeralddowns.com</a>
-----------------	-------------------------------	--------------	--

# COMMUNITY SERVICES KING COUNTY

## HOSPITALS

* Auburn Regional Medical Ctr	253-833-7711	202 N Division St, Auburn	<a href="http://www.auburnregional.com">www.auburnregional.com</a>
* Children's Hospital Ctr	206-987-2000	4800 Sand Point Way NE, Seattle	<a href="http://www.seattlechildrens.org">www.seattlechildrens.org</a>
* Evergreen Hospital	425-899-1000	12040 NE 128th St, Kirkland	<a href="http://www.evergreenhealthcare.org">www.evergreenhealthcare.org</a>
* Group Health Coop/ES	206-326-3000	201 - 16th Ave E, Seattle	<a href="http://www.ghc.org">www.ghc.org</a>
* Harborview Medical Ctr	206-744-3300	325 Ninth Ave, Seattle	<a href="http://uwmedicine.org/Facilities/Harborview">uwmedicine.org/Facilities/Harborview</a>
* Highline Community Hospital	206-244-9970	16251 Sylvester Rd SW, Burien	<a href="http://www.highlinemedicalcenter.org">www.highlinemedicalcenter.org</a>
* Overlake Hospital	425-688-5211	1035 - 116th Ave, Bellevue	<a href="http://www.overlakehospital.org">www.overlakehospital.org</a>
* St. Francis Hospital	253-835-8100	34515 Ninth Ave S, Federal Way	<a href="http://www.fhshealth.org">www.fhshealth.org</a>
* Swedish/Edmonds	425-640-4000	21601 - 76th Ave W, Edmonds	<a href="http://www.swedish.org">www.swedish.org</a>
* Swedish Medical Ctr	206-386-6000	747 Broadway, Seattle	<a href="http://www.swedish.org">www.swedish.org</a>
* Swedish Medical Cherry Hill	206-320-2000	500 - 17th Ave, Seattle	<a href="http://www.swedish.org">www.swedish.org</a>
* Valley Medical Ctr	425-228-3450	400 S 43rd St, Renton	<a href="http://www.valleymed.org">www.valleymed.org</a>
* U of WA Medical Ctr	206-598-3300	1959 NE Pacific St, Seattle	<a href="http://www.uwmedicine.org">www.uwmedicine.org</a>

## MOVERS

Additional information can be found at [www.moving-tips.net](http://www.moving-tips.net) or [www.moving.org](http://www.moving.org)

* A & E Relocation Services	800-496-8276	<a href="http://movingservices.com/aanderelocation">movingservices.com/aanderelocation</a>
* A Aaron Glide Self Mover Service	206-328-5424	<a href="http://www.aaronglide.com">www.aaronglide.com</a>
* AAA Half Price Moving	206-789-3567	<a href="http://www.aaahalfpricemovingco.com">www.aaahalfpricemovingco.com</a>
* All My Sons Moving & Storage	800-726-1579	<a href="http://www.allmysons.com">www.allmysons.com</a>
* Allied Van Lines	800-444-6787	<a href="http://www.allied.com">www.allied.com</a>
* American Red Ball International	800-733-8139	<a href="http://www.redball.com">www.redball.com</a>
* Bekins	866-856-6107	<a href="http://www.bekins.com">www.bekins.com</a>
* Cascade Moving & Storage Inc	206-762-9100	<a href="http://www.cascademovingandstorage.com">www.cascademovingandstorage.com</a>
* Continental Van Lines Inc	206-937-2261	<a href="http://www.continentalvan.com">www.continentalvan.com</a>
* Crown Moving Company Inc	206-336-2500	<a href="http://www.crownmoving.com">www.crownmoving.com</a>
* Hansen Bros Moving & Storage	206-365-4454	<a href="http://www.hansenbros.com">www.hansenbros.com</a>
* Neighbors Moving & Storage	253-872-9400	<a href="http://www.neighborsmoving.com">www.neighborsmoving.com</a>
* PODS-Portable On Demand	877-770-7637	<a href="http://www.pods.com">www.pods.com</a>
* Seattle Movers	206-284-9445	<a href="http://www.seattlemovers.com">www.seattlemovers.com</a>
* Starving Students	877-327-0228	<a href="http://www.ssmovers.com">www.ssmovers.com</a>
* United Van Lines	877-740-3040	<a href="http://www.unitedvanlines.com">www.unitedvanlines.com</a>
* University Moving & Storage	206-362-0508	<a href="http://www.universitymovingandstorage.com">www.universitymovingandstorage.com</a>
* World Cargo International Services	800-839-5003	<a href="http://www.worldcargosvc.com">www.worldcargosvc.com</a>

## MOVIE THEATERS

Additional information can be found at [fandango.com](http://fandango.com), [movietickets.com](http://movietickets.com), [regmovies.com](http://regmovies.com) (Regal) or [amctheatres.com](http://amctheatres.com) (AMC)

### Auburn

* Cinema 17	Super Mall, Auburn	253-735-6721
* Valley 6 Outdoor Theaters	S 277th & Auburn Way N, Auburn	253-854-1250

### Bainbridge Island

* Bainbridge Cinemas	403 N Madison Ave, Bainbridge Island	206-855-8173
----------------------	--------------------------------------	--------------

### Bellevue

* Crossroads Cinema	NE 8th & 156th Ave NE, Bellevue	425-562-7230
* Factoria Cinemas	3505 - 128th SE, Bellevue	425-641-9206
* Lincoln Square Cinemas	700 Bellevue Way NE, Bellevue	425-454-7400

### Enumclaw

* Chalet Theatre	1721 Well, Enumclaw	360-825-3881
* Enumclaw Cinema	258 Roosevelt E, Enumclaw	360-825-3888

### Federal Way

* Century 16	1928 S Commons, Federal Way	253-839-3050
* Galaxy Gateway 8	2501 Gateway Ctr Pl, Federal Way	253-946-5289

### Issaquah

* Issaquah 9 Theatre	1490 NW 11th Ave, Issaquah	425-313-5666
----------------------	----------------------------	--------------

### Kent

* Kent Station Cinema	426 Ramsay Way, Kent	253-850-2684
-----------------------	----------------------	--------------

(Movie Theater Information continued next page)



# COMMUNITY SERVICES KING COUNTY

## MOVIE THEATERS (CONTINUED)

Additional information can be found at [fandango.com](http://fandango.com), [movietickets.com](http://movietickets.com), [edwardscinemas.com](http://edwardscinemas.com) (Regal Cinemas) or [amctheatres.com](http://amctheatres.com)

<b>Kirkland</b>		
* Kirkland Parkplace	404 Park Place Center, Kirkland	425-827-9000
* Totem Lake Cinemas	12232 NE Totem Lake Way, Kirkland	425-820-5929
<b>Redmond</b>		
* Bella Bottega 11 Cinema	8890 NE 161st Ave, Redmond	425-556-9323
<b>Renton</b>		
* East Valley Cinema	Hwy 167 & East Valley Rd, Renton	425-333-2283
* The Landing Stadium 14	900 North 10th Place, Renton	425-203-9263
<b>Tukwila</b>		
* Parkway Plaza Cinema	7374 S Center Parkway, Tukwila	206-575-1313
* Southcenter 16	Southcenter Mall, Tukwila	888-262-4386
<b>Seattle</b>		
* Admiral Theatres	2343 California SW, Seattle	206-938-3456
* Cinerama Theatre	2100 - 4th, Seattle	206-443-0808
* Crest Cinema Center	16505 - 5th NE, Shoreline	206-781-5755
* Egyptian Theatre	805 E Pine, Seattle	206-781-5755
* Guild 45th Theatre	2115 N 45th, Seattle	206-781-5755
* Harvard Exit	807 E Roy, Seattle	206-781-5755
* Majestic Bay Theatre	2044 NW Market, Ballard	206-781-2229
* Metro Cinemas	4500 - 9th NE, Seattle	206-781-5755
* Meridian 16	1501 7th Ave, Seattle	206-622-2434
* Neptune Theatre	1303 NE 45th, Seattle	206-781-5755
* Oak Tree Cinemas	10006 Aurora N, Seattle	206-527-1748
* Omnidome Film Exp	Pacific Science Center 200 - 2nd Ave, Seattle	206-443-2001
* Pacific Place 11	600 Pine St, Ste 400, Seattle	206-575-1313
* Pike Street Cinemas	1108 Pike, Seattle	
* Seven Gables Theatre	911 NE 50th, Seattle	206-781-5755
* Uptown Cinemas	511 Queen Anne N, Seattle	206-285-1022
* Varsity Theatre	4329 University Way NE, Seattle	206-781-5755
<b>Vashon</b>		
* Vashon Theater	17723 Vashon Highway SW, Vashon	206-463-3232

## MUSEUMS

* Bellevue Arts Museum	510 Bellevue Way NE, Bellevue	425-519-0770	<a href="http://www.bellevuearts.org">www.bellevuearts.org</a>
* Burke Museum	17th Ave NE & 45th Ave NE, Seattle	206-543-5590	<a href="http://www.burkemuseum.org">www.burkemuseum.org</a>
* Center for Wooden Boats	1010 Valley St, Seattle	206-382-2628	<a href="http://www.cwb.org">www.cwb.org</a>
* The Children's Museum	305 Harrison St, Ctr House, Seattle	206-441-1768	<a href="http://www.thechildrensmuseum.org">www.thechildrensmuseum.org</a>
* Coast Guard Museum	1519 Alaska Way S, Seattle	206-217-6993	<a href="http://www.uscg.mil">www.uscg.mil</a> - Search Seattle Museum
* EMP - Experience Music Project	325 - 5th Ave N, Seattle	877-367-5483	<a href="http://www.emplive.org">www.emplive.org</a>
* Museum of Flight	9404 E Marginal Way S, Tukwila	206-764-5720	<a href="http://www.museumofflight.org">www.museumofflight.org</a>
* Frye Art Museum	704 Terry Ave, Seattle	206-622-9250	<a href="http://www.fryeart.org">www.fryeart.org</a>
* Museum of Glass	1801 Dock Street, Tacoma	253-284-4750	<a href="http://www.museumofglass.org">www.museumofglass.org</a>
* Henry Art Gallery	15th Ave NE & NE 45th St, Seattle	206-221-4980	<a href="http://www.henryart.org">www.henryart.org</a>
* Museum of History & Industry	2700 - 24th Ave E, Seattle	206-324-1126	<a href="http://www.seattlehistory.org">www.seattlehistory.org</a>
* Indian Cultural Center	Discovery Pk, 3801 W Gov Wy, Seattle	206-285-4425	<a href="http://www.unitedindians.com">www.unitedindians.com</a>
* Klondike Gold Rush Nat'l Park	319 - 2nd Ave S, Seattle	206-220-4240	<a href="http://www.nps.gov/klse">www.nps.gov/klse</a>
* Nordic Heritage Museum	3014 NW 67th St, Seattle	206-789-5707	<a href="http://www.nordicmuseum.com">www.nordicmuseum.com</a>
* Odyssey, Maritime Discovery Ctr	2205 Alaskan Way, Seattle	206-374-4000	<a href="http://www.ody.org">www.ody.org</a>
* Olympic Sculpture Park	2901 Western Ave, Seattle	206-654-3100	<a href="http://seattleartmuseum.org/Visit/OSP">seattleartmuseum.org/Visit/OSP</a>
* Pacific Science Center	200 Second Ave N, Seattle	206-443-2001	<a href="http://www.pacsci.org">www.pacsci.org</a>
* Science Fiction Museum	325 - 5th Ave N, Seattle	877-724-3428	<a href="http://www.sfhomeworld.org">www.sfhomeworld.org</a>
* Seattle Art Museum	100 University St, Seattle	206-654-3100	<a href="http://www.seattleartmuseum.org">www.seattleartmuseum.org</a>
* Seattle Asian Art Museum	1400 E Prospect St, Seattle	206-654-3100	<a href="http://www.seattleartmuseum.org">www.seattleartmuseum.org</a>
* Seattle Metro Police Museum	317 Third Ave S, Seattle	206-748-9991	
* Whyel Museum of Dolls	1116 - 108th Ave NE, Bellevue	425-455-1116	<a href="http://www.dollart.com">www.dollart.com</a>
* Wing Luke Asian Museum	719 S King St, Seattle	206-623-5524	<a href="http://www.wingluke.org">www.wingluke.org</a>



# COMMUNITY SERVICES KING COUNTY

## PARKS AND RECREATION

Additional websites to help with information on parks: [parks.wa.gov](http://parks.wa.gov) and [metrokc.gov/parks/trails](http://metrokc.gov/parks/trails).

* Big Finn Hill Park	Kirkland	* Kanaskat-Palmer State Park	Enumclaw
* Blake Island State Park	Blake Island	* Lk Sammamish State Park	Issaquah
* Bridle Trails State Park	Bellevue	* Marymoor State Park	Redmond
* Burke Gilman-Sammamish River Trail	Ballard to Redmond	* Mukilteo State Park	Mukilteo
* Cedar River Trail	Renton to Four Corners	* Nolte State Park	Enumclaw
* Cougar Mountain Park	Issaquah	* Olallie State Park	North Bend
* Dash Point State Park	Federal Way	* Saltwater State Park	Des Moines
* Fay Bainbridge State Park	Bainbridge Island	* Snoqualmie Valley Trail	Duvall to North Bend
* Federation Forest State Park	Enumclaw	* Soos Creek Trail	Renton to Kent
* Flaming Geyser State Park	Black Diamond	* St Edward State Park	Kenmore
* Interurban/Green River Trail	Tukwila to Pacific	* West Hylebos State Pk (AKA Dash point)	Federal Way

## PERFORMING ARTS & THEATER

* The 5th Avenue	1308 - 5th Ave, Seattle	206-625-1418	<a href="http://www.5thavenuetheatre.org">www.5thavenuetheatre.org</a>
* ACT Theatre	700 Union St, Seattle	206-292-7676	<a href="http://www.acttheatre.org">www.acttheatre.org</a>
* Bathhouse Theatre	7312 W Greenlake Dr N, Seattle	206-524-1300	<a href="http://seattlepublictheater.org">seattlepublictheater.org</a>
* Bellevue Philharmonic	1805 - 136thPI NE #206 Bellevue	425-455-4171	<a href="http://www.bellevuephil.org">www.bellevuephil.org</a>
* Benaroya Hall	200 University St, Seattle	206-215-4800	<a href="http://www.seattlesymphony.org">www.seattlesymphony.org</a>
* Federal Way Philharmonic	30819 - 14th Ave S, #C, Federal Way	253-529-9857	<a href="http://federalwaysymphony.org">federalwaysymphony.org</a>
* Green Stage	Local parks in Seattle area	206-748-1551	<a href="http://www.greenstage.org">www.greenstage.org</a>
* Intiman Theatre Company	201 Mercer St, Seattle	206-269-1900	<a href="http://www.intiman.org">www.intiman.org</a>
* Meany Theatre	4001 University Way NE, Seattle	206-543-4880	<a href="http://www.meany.org">www.meany.org</a>
* Northwest Chamber Chorus	Seattle area Churches and Town Hall	206-343-0445	<a href="http://northwestchamberchorus.org">northwestchamberchorus.org</a>
* Pacific Northwest Ballet	301 Mercer St, Seattle	206-441-9411	<a href="http://www.pnb.org">www.pnb.org</a>
* Paramount	911 Pine St, Seattle	206-467-5510	<a href="http://andersonparamount.org">andersonparamount.org</a>
* Plateau Ballet	1210 Griffen Ave, Enumclaw	360-825-2196	<a href="http://the-ballet-workshop.com">the-ballet-workshop.com</a>
* Rainier Symphony Kent	Foster & Renton Ikea Performing Arts Ctrs	206-781-5618	<a href="http://www.rainiersymphony.org">www.rainiersymphony.org</a>
* Seattle Children's Theatre	201 Thomas St, Seattle	206-441-3322	<a href="http://www.sct.org">www.sct.org</a>
* Seattle Opera	1020 John St, Seattle	206-389-7600	<a href="http://www.seattleopera.org">www.seattleopera.org</a>
* Seattle Repertory Theatre	155 Mercer St, Seattle	206-443-2222	<a href="http://www.seattlerep.org">www.seattlerep.org</a>
* Seattle Symphony	200 University St, Seattle	206-215-4747	<a href="http://www.seattlesymphony.org">www.seattlesymphony.org</a>

## PUB/BREWERIES (for King, Pierce & Snohomish Counties)

* Baron Brewing Co	1605 S 93rd St Bldg E, Seattle	206-764-1213	<a href="http://www.baronbeer.com">www.baronbeer.com</a>
* Big Time Brewery	4133 University Way NE, Seattle	206-545-4509	<a href="http://www.bigtimebrewery.com">www.bigtimebrewery.com</a>
* Dad Watson's	3601 Fremont Ave N, Seattle	206-632-6505	<a href="http://www.mcmenamins.com">www.mcmenamins.com</a>
* Diamond Know Brewery	621 Front St Mukilteo	425-355-4488	<a href="http://www.diamondknot.com">www.diamondknot.com</a>
* Elk Head Brewing	28120 Highway 410, Buckley	360-829-BREW	
* Elliot Bay Brew & Pub	4720 California Ave SW, Seattle	206-932-8695	<a href="http://www.elliottbaybrewing.com">www.elliottbaybrewing.com</a>
* Elysian Brewing Co	1221 E Pike St, Seattle	206-382-3539	<a href="http://www.elysianbrewing.com">www.elysianbrewing.com</a>
* Engine House #9	611 North Pine, Tacoma	253-272-3435	<a href="http://www.ehouse9.com">www.ehouse9.com</a>
* Flying Pig Brewery	2929 Colby, Everett	425-339-1393	<a href="http://flyingpigrestaurants.com">flyingpigrestaurants.com</a>
* Georgetown Brewing Co	5840 Airport Way S, Seattle	206-766-8055	<a href="http://www.georgetownbeer.com">www.georgetownbeer.com</a>
* Gordon Biersch Brewing	600 Pine St, Seattle	423-424-2000	<a href="http://www.gordonbiersch.com">www.gordonbiersch.com</a>
* Hale's Ales	4301 Leary Way NW, Seattle	206-782-0737	<a href="http://www.halesales.com">www.halesales.com</a>
* Harmon Brewery	1938 Pacific Ave, Tacoma	206-782-0737	<a href="http://www.harmonbrewing.com">www.harmonbrewing.com</a>
* Mac & Jack's Brewery Inc.	17825 NE 65th St, Redmond	425-558-9697	<a href="http://www.macandjacks.com">www.macandjacks.com</a>
* Maritime Pacific Brewing Co	1514 NW Leary Way, Seattle	206-782-6181	<a href="http://www.maritimebrewery.com">www.maritimebrewery.com</a>
* Pacific Rim Brewing Co	9832 14th Ave SW, Seattle	206-764-3844	<a href="http://www.pacificrimbrewing.com">www.pacificrimbrewing.com</a>
* Pike Brewing Co	1415 First Ave, Seattle	206-622-3373	<a href="http://www.pikebrewing.com">www.pikebrewing.com</a>
* Pyramid Breweries	91 S Royal Brougham Wy, Seattle	206-682-8322	<a href="http://www.pyramidbrew.com">www.pyramidbrew.com</a>
* Redhook Ale Brewery	14300 NE 145th St, Woodinville	425-483-3232	<a href="http://www.redhook.com">www.redhook.com</a>
* Rock Bottom Brewing Co	550 106th Ave NE, Bellevue	425-462-9300	<a href="http://www.rockbottom.com">www.rockbottom.com</a>
* Snoqualmie Falls Brewing Co	8032 Falls Ave SE, Snoqualmie	425-831-2337	<a href="http://www.fallsbrew.com">www.fallsbrew.com</a>
* Scuttlebutt Brewing Co	1524 W Marine View Dr Everett	425-257-9316	<a href="http://www.scuttlebuttbrewing.com">www.scuttlebuttbrewing.com</a>

---

# COMMUNITY SERVICES KING COUNTY

---

## SCHOOL DISTRICTS

Additional information can be found at [www.k12.wa.us/maps/sdmainmap.aspx](http://www.k12.wa.us/maps/sdmainmap.aspx) or [www.access.wa.gov/education](http://www.access.wa.gov/education)

* Auburn SD #408	915 - 4th St NE, Auburn	253-931-4914	<a href="http://www.auburn.wednet.edu">www.auburn.wednet.edu</a>
* Bellevue SD #405	12111 NE 1st St, Bellevue	425-456-5200	<a href="http://www.bsd405.org">www.bsd405.org</a>
* Enumclaw SD #216	2929 McDougall Ave, Enumclaw	360-802-7100	<a href="http://www.enumclaw.wednet.edu">www.enumclaw.wednet.edu</a>
* Federal Way SD #210	31405 - 18th Ave S, Federal Way	253-945-2000	<a href="http://www.fwps.org">www.fwps.org</a>
* Highline SD #401	15675 Ambaum Blvd SW, Burien	206-433-2217	<a href="http://www.hsd401.org">www.hsd401.org</a>
* Issaquah SD #411	565 NW Holly St, Issaquah	425-837-7002	<a href="http://www.issaquah.wednet.edu">www.issaquah.wednet.edu</a>
* Kent SD #415	12033 SE 256th St, Kent	253-373-7200	<a href="http://www.kent.k12.wa.us">www.kent.k12.wa.us</a>
* Lk Washington SD #414	16250 NE 74th St, Redmond	425-702-3257	<a href="http://www.lwsd.org">www.lwsd.org</a>
* Mercer Island SD #400	4160 - 86th Ave SE, Mercer Isl.	206-236-3300	<a href="http://www.misd.k12.wa.us">www.misd.k12.wa.us</a>
* North Shore SD #417	3330 Monte Villa Parkway, Bothell	425-489-6000	<a href="http://www.nsd.org">www.nsd.org</a>
* Renton SD #403	300 SW 7th St, Renton	425-204-2340	<a href="http://www.renton.wednet.edu">www.renton.wednet.edu</a>
* Seattle SD #1	2445 3rd Ave S, Seattle	206-252-0100	<a href="http://www.seattleschools.org">www.seattleschools.org</a>
* Snoqualmie Valley SD #410	8001 Silva Ave SE, Snoqualmie	425-831-8000	<a href="http://www.svsd410.org">www.svsd410.org</a>
* Tahoma SD #409	25720 Mpl Vly-Blk Dmnd Rd SE, Maple Valley	425-413-3400	<a href="http://www.tahoma.wednet.edu">www.tahoma.wednet.edu</a>
* Tukwila SD #406	4640 S 144th St, Tukwila	206-901-8000	<a href="http://www.tukwila.wednet.edu">www.tukwila.wednet.edu</a>

## SHOPPING

* Bellevue Square	NE 4th St/Bellevue Way, Bellevue	425-454-3322	<a href="http://www.bellevuesquare.com">www.bellevuesquare.com</a>
* City Centre	1420 - 5th Ave, Seattle	206-624-8800	
* The Commons	1928 S 320th St, Federal Way	253-839-6150	<a href="http://www.tcafw.com">www.tcafw.com</a>
* Northgate Mall	401 NE Northgate Way, Seattle	206-362-4777	<a href="http://www.simon.com">www.simon.com</a>
* Pacific Place	600 Pine St, Seattle	206-405-2655	<a href="http://www.pacificplaceseattle.com">www.pacificplaceseattle.com</a>
* Pike Place Public Market	1529 Pike Place, Seattle	206-682-7453	<a href="http://www.pikeplacemarket.org">www.pikeplacemarket.org</a>
* Redmond Town Center	16495 NE 74th St, Redmond	425-867-0808	<a href="http://www.redmondtowncenter.com">www.redmondtowncenter.com</a>
* Southcenter Mall	2800 Southcenter Mall, Tukwila	425-867-0808	<a href="http://www.westfield.com/southcenter">www.westfield.com/southcenter</a>
* Super Mall	1101 Supermall Way, Auburn	800-729-8258	<a href="http://www.supermall.com">www.supermall.com</a>
* University Village Shopping	2623 NE U Village, Seattle	206-523-0622	<a href="http://www.uvillage.com">www.uvillage.com</a>
* Westlake Center	400 Pine St, Seattle	206-467-1600	<a href="http://www.westlakecenter.com">www.westlakecenter.com</a>
* Ye Olde Curiosity Shop	1001 Alaskan Way, Pier 54,	206-682-5844	<a href="http://www.yeoldecuriosityshop.com">www.yeoldecuriosityshop.com</a>

## SKI AREAS

Additional websites to help with information on ski areas, weather and resorts: [ski-guide.com](http://ski-guide.com), [pnsa.org](http://pnsa.org) and [skiwashington.com](http://skiwashington.com).

* Crystal Mountain Ski Area	33914 Crystal Mtn Blvd Crystal Mtn	360-663-2265	<a href="http://www.crystalmt.com">www.crystalmt.com</a>
* Mission Ridge Ski Area	7500 Mission Ridge Rd Wenatchee	509-663-6543	<a href="http://www.missionridge.com">www.missionridge.com</a>
* Mt Baker Ski Area	1019 Iowa St, Bellingham	206-734-6771	<a href="http://www.mtbakerskiarea.com">www.mtbakerskiarea.com</a>
* Stevens Pass Ski Area	Summit, US Hwy 2, Skykomish	206-634-1645	<a href="http://www.stevenspass.com">www.stevenspass.com</a>
* The Summit	1001 State Route 906, Snoqualmie Pass	425-454-7669	<a href="http://summit-at-snoqualmie.com">summit-at-snoqualmie.com</a>
* White Pass Ski Area	US Highway 12, White Pass	509-453-8731	<a href="http://www.skiwhitepass.com">www.skiwhitepass.com</a>

## SPORTS TEAMS (SEMI-PRO AND PROFESSIONAL)

* Everett AquaSox	3900 Broadway, Everett	425-258-3673	<a href="http://www.aquasox.com">www.aquasox.com</a>
* Everett Silvertips	Everett Events Center - 2000 Hewitt Ave	425-252-5100	<a href="http://everettsilvertips.com">everettsilvertips.com</a>
* Seattle Mariners	Safeco Field - First Ave S & Edgar Martinez Dr	206-628-0888	<a href="http://www.mariners.mlb.com">www.mariners.mlb.com</a>
* Seattle SeaHawks	Qwest Field - 800 Occidental Ave S	206-628-0888	<a href="http://www.seahawks.com">www.seahawks.com</a>
* Seattle Storm	Key Arena - 305 Harrison St	206-217-9622	<a href="http://www.wnbs.com/storm">www.wnbs.com/storm</a>
* Seattle Sounders	Qwest Field - 800 Occidental Ave S	800-796-5425	<a href="http://seattlesounders.net">seattlesounders.net</a>
* Seattle Thunderbirds	Kent Events Center - 220 Fourth Ave S	206-448-PUCK	<a href="http://seattle-thunderbirds.com">seattle-thunderbirds.com</a>
* Tacoma Rainiers Baseball	2502 S Tyler St, Tacoma	800-281-3834	<a href="http://tacoma.rainiers.milb.com">tacoma.rainiers.milb.com</a>

# COMMUNITY SERVICES KING COUNTY

## TOURS & AREA ATTRACTIONS (for King, Pierce & Snohomish Counties)

Additional information can be found at [www.seattleattractions.com/allattractions.html](http://www.seattleattractions.com/allattractions.html) or [www.seattle.net](http://www.seattle.net)

### Attractions

* Arboretum @ Washington Pk	2300 Arboretum Drive East, Seattle	206-684-4725	<a href="http://depts.washington.edu/wpa/index.htm">depts.washington.edu/wpa/index.htm</a>
* Gameworks	1511 7th Ave, Seattle	206-521-0952	<a href="http://gameworks.com/locations/seattle.php">gameworks.com/locations/seattle.php</a>
* Monorail	Westlake, 3rd Floor, 5th Ave/Pine St, Seattle	206-905-2620	<a href="http://www.seattlemonorail.com">www.seattlemonorail.com</a>
* Seattle Public Library	1000 Fourth Ave,	206-386-4636	<a href="http://www.spl.org">www.spl.org</a>
* Seattle Glassblowing Studio	2227 5th Ave, Seattle	206-448-2181	<a href="http://www.seattleglassblowing.com">www.seattleglassblowing.com</a>
* Space Needle	400 Broad St, Seattle	206-905-2100	<a href="http://www.spaceneedle.com">www.spaceneedle.com</a>
* Tillicum Village	2992 SW Avalon Way, Seattle	206-933-8600	<a href="http://www.tillicumvillage.com">www.tillicumvillage.com</a>
* Wild Waves & Enchanted Village	36201 Enchanted Pkwy S, Federal Way	206-521-0952	<a href="http://www.wildwaves.com">www.wildwaves.com</a>

### Cruises/Tours

* Argosy Cruise	1101 Alaskan Way, Seattle	206-623-1445	<a href="http://www.argosycruises.com">www.argosycruises.com</a>
* Ballard Locks	3015 NW 54th St, Seattle	206-905-2620	<a href="http://seattle.gov/tour/locks.htm">seattle.gov/tour/locks.htm</a>
* Boeing Tour	8415 Paine Field Blvd, Mukilteo	206-768-1234	<a href="http://seattlecitytours.com/boeing.html">seattlecitytours.com/boeing.html</a>
* Brew Hops Tour	2403 Dexter Ave N, Seattle	206-283-8460	
* Chinatown Discovery	719 S King St, Seattle	206-623-5124	<a href="http://seattlechinatowntour.com">seattlechinatowntour.com</a>
* Discover Houseboating	117 East Louisa Street, Seattle	206-322-9157	<a href="http://discoverhouseboating.com">discoverhouseboating.com</a>
* Kenmore Air Tours	Lk Union, 950 Westlake Ave N, Seattle	425-486-1257	<a href="http://www.kenmoreair.com">www.kenmoreair.com</a>
* Seattle Food Tours	1st Ave. & Pike St, Seattle	800.838.3006	<a href="http://www.savorseattlestours.com">www.savorseattlestours.com</a>
* Ride the Ducks	516 Broad St, Seattle	206-441-3825	<a href="http://ridetheducksofseattle.com">ridetheducksofseattle.com</a>
* Seattle Underground Tour	608 First Ave, Seattle	206-682-3705	<a href="http://www.undergroundtour.com">www.undergroundtour.com</a>
* Seattle Architecture Tour	1333 Fifth Ave, Ste 300, Seattle	206.667.9184	<a href="http://www.seattlearchitecture.org">www.seattlearchitecture.org</a>
* Victoria Clippers	2701 Alaskan Way, Pier 69, Seattle	206-448-5000	<a href="http://www.victoriaclipper.com">www.victoriaclipper.com</a>

### Zoos and Aquariums

* Cougar Mountain Park	19525 SE 54th, Issaquah	425-391-5508	<a href="http://www.cougarmountainzoo.org">www.cougarmountainzoo.org</a>
* Northwest Trek	11610 Trek Dr E, Eatonville	360-832-6117	<a href="http://www.nwtrek.org">www.nwtrek.org</a>
* The Outback	10030 State Route 530 NE, Arlington	360-403-7474	<a href="http://christmastreesandroos.com">christmastreesandroos.com</a>
* Pt Defiance Zoo & Aquarium	5400 N Pearl St, Tacoma	253-591-5337	<a href="http://www.pdza.org">www.pdza.org</a>
* Seattle Aquarium	1483 Alaskan Way, Seattle	206-386-4300	<a href="http://www.seattleaquarium.org">www.seattleaquarium.org</a>
* Woodland Park Zoo	5500 Phinney Ave N, Seattle	206-684-4800	<a href="http://www.zoo.org">www.zoo.org</a>

## TRAVEL/TRANSPORTATION

For additional airline information, see [www.portseattle.org/seatac/flights/](http://www.portseattle.org/seatac/flights/)

### Airline Information

* Aeromexico	800-237-6639	<a href="http://www.aeromexico.com/en_us">www.aeromexico.com/en_us</a>
* Air Canada	800-247-2262	<a href="http://www.aircanada.ca">www.aircanada.ca</a>
* Air France	800-237-2747	<a href="http://www.airfrance.us">www.airfrance.us</a>
* AirTran Airways	800-247-8726	<a href="http://www.airtran.com">www.airtran.com</a>
* Alaska Airlines	800-426-0333	<a href="http://www.alaskaair.com">www.alaskaair.com</a>
* American Airlines	800-433-7300	<a href="http://www.aa.com">www.aa.com</a>
* Asiana Airlines	800-227-4262	<a href="http://www.asiana.co.jp">www.asiana.co.jp</a>
* British Airways	800-247-9297	<a href="http://www.britishairways.com">www.britishairways.com</a>
* Continental Airlines	800-525-0280	<a href="http://www.continental.com">www.continental.com</a>
* Delta Airlines	800-221-1212	<a href="http://www.delta.com">www.delta.com</a>
* EVA Air	800-695-1188	<a href="http://www.evaair.com">www.evaair.com</a>
* Frontier Airlines	800-432-1359	<a href="http://www.frontierairlines.com">www.frontierairlines.com</a>
* Hainan Airlines	888-688-8813	<a href="http://global.hnair.com">http://global.hnair.com</a>
* Hawaiian Airlines	800-367-5320	<a href="http://www.hawaiianair.com">www.hawaiianair.com</a>
* Horizon Air	800-547-9308	<a href="http://www.alaskaair.com">www.alaskaair.com</a>
* Icelandair	800-223-5500	<a href="http://www.icelandair.com">www.icelandair.com</a>
* JetBlue Airways	800-JETBLUE	<a href="http://www.jetblue.com">www.jetblue.com</a>
* Korean Air	800-438-5000	<a href="http://www.koreanair.com">www.koreanair.com</a>
* Lufthansa Airlines	800-399-LUFT	<a href="http://www.lufthansa.com">www.lufthansa.com</a>
* Midwest Airlines	800-452-2022	<a href="http://www.midwestairlines.com">www.midwestairlines.com</a>
* Southwest Airlines	800-435-9792	<a href="http://www.southwest.com">www.southwest.com</a>
* Sun Country	800-359-6786	<a href="http://www.suncountry.com">www.suncountry.com</a>
* United Airlines (including United Express)	800-241-6522	<a href="http://www.united.com">www.united.com</a>
* US Airways	800-428-4322	<a href="http://www.usairways.com">www.usairways.com</a>
* Virgin America	877-359-8474	<a href="http://www.virginamerica.com">www.virginamerica.com</a>

---

# COMMUNITY SERVICES

## KING COUNTY

---

### TRAVEL/TRANSPORTATION (CONTINUED)

#### Airline Shuttle Information

* Shuttle Express	425-981-7000	<a href="http://www.shuttleexpress.com">www.shuttleexpress.com</a>
* Airporter Shuttle	360-380-8800	<a href="http://www.airporter.com">www.airporter.com</a>
* Black Hills Transportation	360-786-0636	
* Bremerton/Kitsap Airporter	360-876-1737	<a href="http://www.kitsapairporter.com">www.kitsapairporter.com</a>
* Greyline Airporter	206-626-6088	<a href="http://www.graylineseattle.com/airportexpress1.cfm">www.graylineseattle.com/airportexpress1.cfm</a>
* Olympic Bus Lines	360-417-0700	<a href="http://www.olympicbuslines.com">www.olympicbuslines.com</a>
* Whidbey-SeaTac Shuttle	360-679-4003	<a href="http://www.seatacshuttle.com">www.seatacshuttle.com</a>

#### Taxi Information

* Farwest Taxi	206-622-1717	<a href="http://www.1800taxicab.com/static/seattle.htm">www.1800taxicab.com/static/seattle.htm</a>
* Green Cab	206-575-4040	<a href="http://www.greencabseattle.com">www.greencabseattle.com</a>
* Graytop Cab	206-782-8294	<a href="http://www.yellowtaxi.net">www.yellowtaxi.net</a>
* No Limit Transfer & Limo	206-227-4126	
* North End Taxi	425-363-3333	
* Seattle Limousine Service	206-762-3339	<a href="http://www.seattletowncarinc.com">www.seattletowncarinc.com</a>
* Seattle Town Car	206-369-9199	<a href="http://www.seattletowncarinc.com">www.seattletowncarinc.com</a>
* Yellow Cabs	206-622-6500	<a href="http://www.yellowtaxi.net">www.yellowtaxi.net</a>

#### Transit Information

* Amtrak Trains	800-872-7245	<a href="http://www.amtrak.com">www.amtrak.com</a>
* Community Transit	425-353-RIDE	<a href="http://www.comtrans.org">www.comtrans.org</a>
* DART	425-347-5912	<a href="http://www.dialaride.org">www.dialaride.org</a>
* Everett Transit (Snohomish County)	425-257-7777	<a href="http://www.everettwa.org">www.everettwa.org</a>
* Greyhound Bus Lines	800-231-2222	<a href="http://www.greyhound.com">www.greyhound.com</a>
* Metro Transit (King County)	800-553-3000	<a href="http://www.transit.metrokc.gov">www.transit.metrokc.gov</a>
* Northwestern Trailways	800-366-3830	<a href="http://www.trailways.com">www.trailways.com</a>
* Pierce Transit (Pierce County)	800-201-4900	<a href="http://www.piercetransit.org">www.piercetransit.org</a>
* Sound Transit	800-201-4900	<a href="http://www.soundtransit.org">www.soundtransit.org</a>
* Washington State Ferries	888-808-7977	<a href="http://www.wsdot.wa.gov/ferries">www.wsdot.wa.gov/ferries</a>

### VEHICLE EMISSION TESTING

For more information, go to [www.ecy.wa.gov/programs/air/cars/automotive\\_pages.htm](http://www.ecy.wa.gov/programs/air/cars/automotive_pages.htm).

The state requires an auto inspection for out-of-state vehicles. This is done by the Washington State Patrol for a fee. Vehicle emission tests are also required, depending on the county. There is a fee for emission testing. Call your Washington State Patrol for a fee.

#### King County Locations

* Auburn	3002 "A" St SE, Auburn	253-939-1225
* Bellevue	15313 SE 37th St, Bellevue	425-644-1803
* North Seattle	12040 Aurora Ave N, Seattle	206-362-5173
* Redmond	18610 NE 67th Ct, Redmond	425-882-3317
* Renton	805 SW 10th St, Renton	425-228-6453
* South Seattle	3820 6th Ave S, Seattle	206-624-1254

### VEHICLE REGISTRATION & LICENSING

For more information, go to [www.dol.wa.gov](http://www.dol.wa.gov).

New residents are required to obtain a valid Washington driver's license within 30 days of taking residence. Applicants must show proof of age and identity and pass the required examinations.

Those who do not have a valid driver's license in their possession must have proof of license eligibility from the state in which the license was held. There is a fee. Call your local agency for quotes.

Washington license plates can be obtained by providing an emissions test report; previous registration, license plates and title; and a Washington State Patrol inspection slip. If you are from out-of-state, you have 60 days to obtain vehicle license plates.

#### King County Locations

* Alpine Management Svcs	1175 NW Gilman Blvd, Issaquah	425-369-0409
* Auburn License Agency	124 Auburn Way N, Auburn	253-833-9696
* Ballard Auto Licensing	2232 NW Market St, Seattle	206-781-0199
* Bel Red Auto License	15600 NE 8th, #O-14, Bellevue	425-747-0444
* Bill Pierre License Agency	12631 - 30th Ave NE, Seattle	206-361-5505
* Eastside Auto Licensing	12006 NE 85th St, Kirkland	425-828-4661

(Vehicle Registration continued next page)

---

# COMMUNITY SERVICES

## KING COUNTY

---

### VEHICLE REGISTRATION & LICENSING (CONTINUED)

* Enumclaw License Agency	1612 Cole St, Enumclaw	360-825-2711
* Federal Way Auto License	32610 - 17th St S, C-4, Federal Way	253-874-8375
* Georgetown License	5963 Corson Ave S, Seattle	206-767-7782
* Intn'l Development Svcs	17602 - 99th Place SW, Vashon	206-463-9170
* Kent Licensing Agency	331 Washington Ave S, Kent	253-852-3110
* King County Records	500 - 4th Ave, Rm 401, Seattle	206-296-4000
* Puget Sound License	53820 Rainier Ave S, #C, Seattle	206-723-9370
* Renton License Agency	329 Williams Ave S, Renton	425-228-5640
* Siler Licensing	628 SW 151st St, Seattle	206-243-8222
* Sno Falls Credit Union	9025 Meadow Brook Way SE, Snoqualmie	425-888-8705
* University License Agency	5615 Roosevelt Way NE, Seattle	206-522-4090
* Wendels License & Svc	13201 Aurora Ave N, #2, Seattle	206-362-6161

### VOTER REGISTRATION

For more information, go to [www.secstate.wa.gov/elections/register.aspx](http://www.secstate.wa.gov/elections/register.aspx).

You must complete a voter registration form if you are voting for the first time in Washington or if you have moved to a new county. If you have moved within the same county, you may transfer your registration by completing a new form or contacting your County Auditor by mail, email or phone.

You must be a citizen of the United States, a legal resident of Washington State and at least 18 years old by election day to register to vote in this state.

You may not register to vote if you are presently denied your civil rights due to a felony conviction or judicially declared mentally incompetent and ineligible to vote. You may not register in more than one county or state.

If you register by mail and do not have a Washington State driver's license, Washington State ID card, or a Social Security number, you will be required to provide one of the following items when you cast your ballot: valid photo ID, valid tribal ID of a federally recognized Indian tribe in Washington State, copy of a current utility bill, current bank statement, copy of a current government check, copy of a current paycheck, a government document that shows both your name and address. If you do not provide one of the above items either before or at the time of voting, your ballot will be treated as a provisional ballot.

### WINERIES (for King & Snohomish Counties)

* Bainbridge Island Vineyards	8989 Day Rd E, Bainbridge Island	206-842-9463	bainbridgevineyards.com
* Betz Family Winery	18512 142nd Ave NE Woodinville	425-861-9823	www.betzfamilywinery.com
* Cadence Winery	432 Yale Ave N, Seattle	206-381-9507	www.cadencewinery.com
* Cavatappi Winery	9702 120th Place, Kirkland	425-823-6533	www.cavatappi.com
* Chateau Ste. Michelle	14111 NE 145th, Woodinville	425-488-1133	chateau-ste-michelle.com
* Chatter Creek Winery	620 NE 55th St, Seattle	206-985-2816	www.chattercreek.com
* Chuckanut Ridge Winery	1017 N State St, Bellingham	360-734-3537	www.chuckanutridge.net
* Columbia Winery	14030 NE 145th, Woodinville	425-488-2776	www.columbiawinery.com
* Covey Run Winery	14030 NE 145th St, Woodinville	888-659-7900	www.coveyrun.com
* EB Foote Winery	127B SW 153rd St, Burien	206-242-3852	www.ebfootewinery.com
* Facelli Winery	16120 Wdnvll'-Redmond Rd, Woodinville	425-488-1020	www.facelliwinery.com
* Isabella Grace Winery	28611 SE 204th St, Hobart	425-941-6364	isabellagracewinery.com
* Lopez Island Vineyard & Winery	724 Fisherman Bay Rd, Lopez Island	360-468-3644	lopezislandvineyards.com
* Mark Ryan Winery	19495 - 144th Ave NE, Woodinville	206-295-6796	www.markryanwinery.com
* Novelty Hill Winery	19730 - 144th Ave NE, Woodinville	425-481-8317	www.noveltyhillwines.com
* Silver Lake Winery	15029 Wdnvll'-Redmond Rd, Woodinville	425-485-2437	www.silverlakewinery.com
* Washington Hills Cellars	(Apex) 10604 NE 38th Place, Kirkland	425-889-9463	www.washingtonhills.com
* Whidbey Isl. Vineyard & Winery	5237 S Langley Rd, Langley	360-221-2040	whidbyislandwinery.com



# UTILITY LOCATOR KING COUNTY

GARBAGE	PHONE	FAX	WEBSITE
* Auburn	206-682-9735 206-652-8831 800-592-9995	253-872-3916	www.rabanco.com www.ci.auburn.wa.us www.wmnorthwest.com
* Bellevue	206-682-9730 425-452-4762	425-646-2440	www.rabanco.com
* Bothell	206-682-9730 800-592-9995	425-646-2440	www.rabanco.com www.wmnorthwest.com
* Burien	800-592-9995		www.wmnorthwest.com
* Covington	206-682-9735 253-872-7220	253-872-3916	www.rabanco.com
* Des Moines	206-682-9735 253-872-7220 800-592-9995	253-872-3916	www.rabanco.com www.rabanco.com www.wmnorthwest.com
* Enumclaw	800-592-9995		www.wmnorthwest.com
* Federal Way	425-392-6651 800-592-9995		www.ci.burien.wa.us www.wmnorthwest.com
* Issaquah	253-833-3333 206-682-9730 800-592-9995 425-837-3050	425-646-2440	www.wmnorthwest.com www.rabanco.com www.wmnorthwest.com www.ci.issaquah.wa.us
* Kent	206-682-9735 800-592-9995	253-872-3916	www.rabanco.com www.wmnorthwest.com
* Kirkland	206-682-9730 800-592-9995	425-646-2440	www.rabanco.com www.wmnorthwest.com
* Maple Valley	206-682-9730	425-646-2440	www.rabanco.com
* Mercer Island	206-682-9730	425-646-2440	www.rabanco.com
* Newcastle	800-592-9995		www.wmnorthwest.com
* North Bend	206-682-9730 425-392-6651	425-646-2440	www.rabanco.com www.ci.north-bend.wa.us
* Redmond	206-682-9730 800-592-9995	425-646-2440	www.rabanco.com www.wmnorthwest.com
* Renton	206-682-9730 206-682-9735 800-592-9995	425-646-2440 253-872-3916	www.rabanco.com www.rabanco.com www.wmnorthwest.com
* SeaTac	206-682-9735 800-592-9995	253-872-3916	www.rabanco.com www.wmnorthwest.com
* Seattle	206-682-9735 206-332-7777	253-872-3916 206-332-7627	www.rabanco.com www.rabanco.com
* Skyway	800-592-9995		www.wmnorthwest.com
* Woodinville	800-592-9995		www.wmnorthwest.com
* Vashon Transfer Station	866-740-2455 206-296-4466		www.murreysdisposal.com

## TELEPHONE

* Century Link	800-475-7526		www.centurylink.com
* AT&T	800-222-0300		www.consumer.att.com
* Comcast	888-226-2278		www.comcast.com
* CenturyTel	800-831-1733		www.centurytel.com
* Verizon	800-483-3000		www.verizon.com

## HEATING / ELECTRICITY/NATURAL GAS

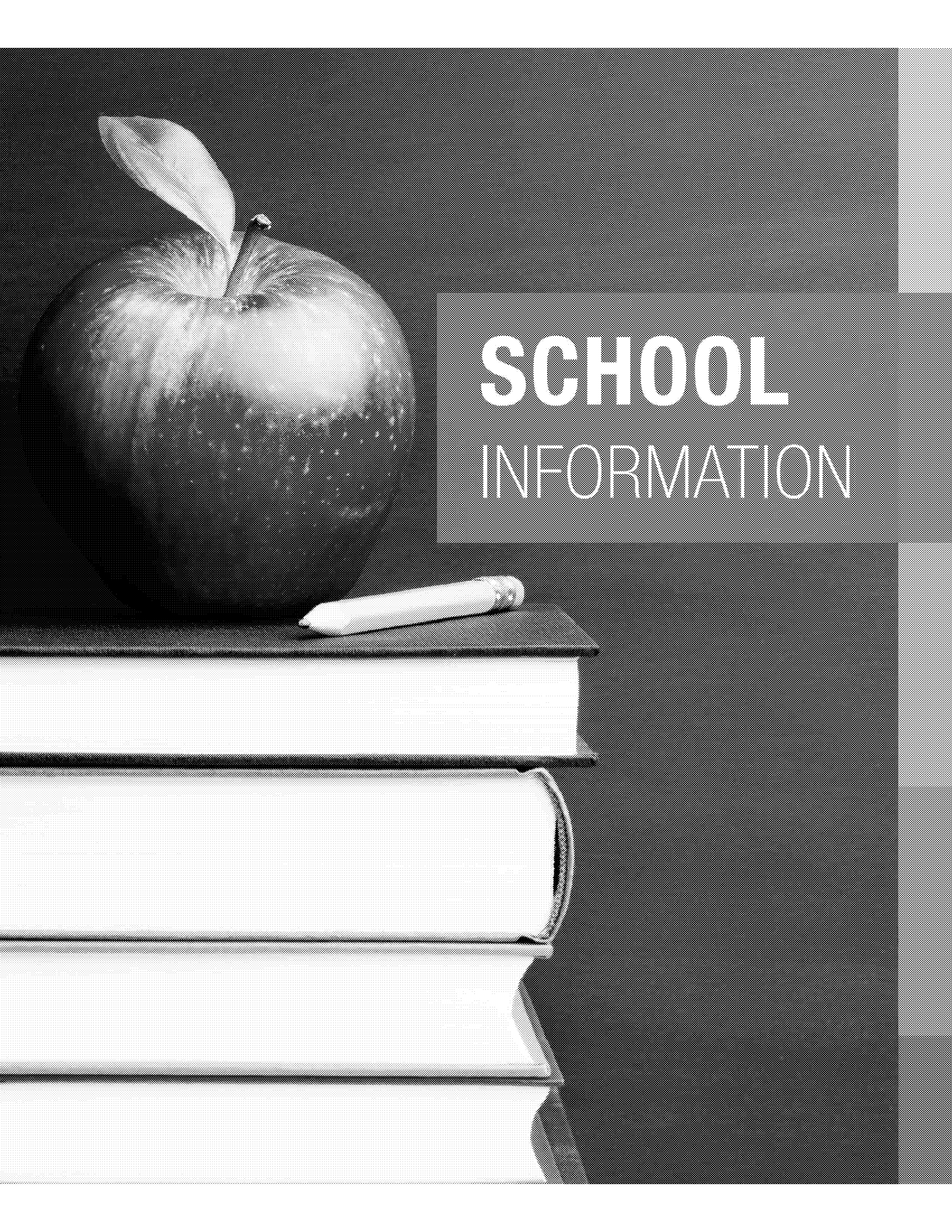
* Puget Sound Energy	888-225-5773		www.pse.com
* Seattle City Light	206-684-3000		www.cityofseattle.net/light
* Bowman Payless Oil	206-772-4447		
* Norgas Propane	253-839-5062		
* Vashon Island Energy	206-463-3637		

## CABLE & TELEVISION OPTIONS

* Comcast	888-266-2278		www.comcast.com
* Direct TV	888-777-2454		www.directv.com
* Dish Network	888-825-2557		www.dishnetwork.com
* Day Wireless Systems	800-503-3433	206-878-1926	www.daywireless.com

# UTILITY LOCATOR KING COUNTY

WATER & SEWER	PHONE	FAX	WEBSITE
* Auburn Utilities	253-931-3038	253-876-1900	<a href="http://www.ci.auburn.wa.us">www.ci.auburn.wa.us</a>
* Bellevue Water District #107	425-452-6973	425-452-4095	<a href="http://www.ci.bellevue.wa.us">www.ci.bellevue.wa.us</a>
* Bothell	425-486-6250	425-486-1992	<a href="http://www.ci.bothell.wa.us">www.ci.bothell.wa.us</a>
* Burien			
Water District #20	206-243-3990	206-244-7514	
Water District #49	206-242-8535		
Highline Water District	206-824-0375	206-824-0806	<a href="http://www.highlinewater.org">www.highlinewater.org</a>
Seattle Water District	206-684-5900		
SW Suburban Sewer	206-244-9575	206-433-8546	<a href="http://www.swssd.com">www.swssd.com</a>
Midway Sewer	206-824-4960	206-878-2692	
Val View Sewer	206-242-3236	206-242-1527	<a href="http://www.valview.com">www.valview.com</a>
* Covington Water District	253-631-0565	253-867-5233	<a href="http://www.covingtonwater.com">www.covingtonwater.com</a>
Water District #111	253-631-3770		
Soos Creek W&S	253-630-9900	253-630-5289	<a href="http://www.sooscreek.com">www.sooscreek.com</a>
* Des Moines Water District #54	206-878-7210		
Lake Haven	253-941-1516		<a href="http://www.lakehaven.org">www.lakehaven.org</a>
Highline Water District	206-824-0375	206-824-0806	<a href="http://www.highlinewater.org">www.highlinewater.org</a>
Midway Sewer	206-824-4960	206-878-2692	
* Enumclaw Public Works	360-825-3591		
* Federal Way			
Lake Haven	253-941-1516		<a href="http://www.lakehaven.org">www.lakehaven.org</a>
Highline Water District	206-824-0375	206-824-0806	<a href="http://www.highlinewater.org">www.highlinewater.org</a>
* Issaquah			
NE LK Sam S&W	425-868-1144	425-868-4005	<a href="http://www.nesswd.org">www.nesswd.org</a>
Sammamish Plateau W&S	425-392-6256	425-391-5389	<a href="http://www.sammplat.wa.org">www.sammplat.wa.org</a>
* Kent Water District #111	253-631-3770		
	253-856-5201		
Soos Creek W&S	253-630-9900	253-630-5289	<a href="http://www.sooscreek.com">www.sooscreek.com</a>
Highline Water District	206-824-0375	206-824-0806	<a href="http://www.highlinewater.org">www.highlinewater.org</a>
Midway Sewer	206-824-4960	206-878-2692	
* Kirkland	425-587-3150		<a href="http://www.ci.kirkland.wa.us">www.ci.kirkland.wa.us</a>
* Maple Valley Water	253-631-0565		<a href="http://www.ci.maple-valley.wa.us">www.ci.maple-valley.wa.us</a>
Covington Water	253-631-0565		
Cedar River	425-255-6370		<a href="http://www.crwsd.com">www.crwsd.com</a>
Soos Creek W&S	253-630-9900	253-630-5289	<a href="http://www.sooscreek.com">www.sooscreek.com</a>
* Mercer Island	206-236-3557	206-2363462	
* North Bend - Sallal Water	425-888-3650		
* Newcastle - Coal Creek Utility	425-235-9200	425-228-7429	<a href="http://www.ccud.org">www.ccud.org</a>
* Redmond	425-556-2152	425-556-2198	<a href="http://www.ci.redmond.wa.us">www.ci.redmond.wa.us</a>
* Renton			
Water District #90	425-255-9600		<a href="http://www.ci.renton.wa.us">www.ci.renton.wa.us</a>
	425-430-7400		
Coal Creek Utility	425-235-9200	425-228-7429	<a href="http://www.ccud.org">www.ccud.org</a>
Cedar River	425-255-6370		<a href="http://www.crwsd.com">www.crwsd.com</a>
Soos Creek W&S	253-630-9900	253-630-5289	<a href="http://www.sooscreek.com">www.sooscreek.com</a>
* Sammamish Plateau W&S	425-392-6256	425-391-5389	<a href="http://www.sammplat.wa.org">www.sammplat.wa.org</a>
* Seahurst Water District #20	206-243-3990	206-244-7514	
* SeaTac			
Water District #125	206-242-9547	206-248-1744	<a href="http://www.waterdistrict125.com">www.waterdistrict125.com</a>
Highline Water District	206-824-0375	206-824-0806	<a href="http://www.highlinewater.org">www.highlinewater.org</a>
Midway Sewer	206-824-4960	206-878-2692	
* Seattle Public Utilities	206-684-3000		<a href="http://www.seattle.gov/util">www.seattle.gov/util</a>
* Vashon Island - District 19	206-463-9007		<a href="http://www.water19.com">www.water19.com</a>
* Woodinville	425-487-4100		<a href="http://www.woodinvillewater.com">www.woodinvillewater.com</a>



# SCHOOL INFORMATION

# Private Schools Report

## Subject Property Location

**Property Address** 254 UNION AVE NE  
**City, State & Zip** RENTON, WA 98059-5033  
**County** KING COUNTY  
**Mailing Address** 3435 122ND PL NE, BELLEVUE, WA 98005-1237

**Report Date:** 11/15/2024  
**Order ID:** R166270801

**Property Use** Religious, Church, Worship (synagogue, temple, parsonage)  
**Parcel Number** 518210-0012

## Private School Summary

School Name	Grades	Distance from Subject Property
Rainier Christian School-highlands	Prekindergarten - Grade 6	0.59 miles
Rainier Christian Schools	Prekindergarten - Grade 6	1.72 miles
Renton Christian School	Kindergarten - Grade 9	2.03 miles
Cedar River Montessori School	Prekindergarten - Grade 6	2.16 miles
St Anthony Elementary School	Kindergarten - Grade 8	2.42 miles
City Kids	Prekindergarten - Kindergarten	2.51 miles
Family Circle	Prekindergarten - Kindergarten	3.20 miles
Maple Valley Christian School	Prekindergarten - Grade 6	3.20 miles
Rainier Christian Schools-maple Valley	Prekindergarten - Grade 6	3.20 miles
Rainier Christian Schools	Prekindergarten - Grade 12	3.20 miles
New Horizon School	Grade 6 - Grade 12	3.38 miles
King Of Kings Lutheran Preschool	Prekindergarten - Kindergarten	3.49 miles

## RAINIER CHRISTIAN SCHOOL-HIGHLANDS

<b>Address</b>	850 UNION AVENUE NE RENTON, WA 98059-4503	<b>Prekindergarten</b>	66
<b>Phone Number</b>	425-228-9897	<b>Kindergarten</b>	11
<b>Distance from Subject Property</b>	0.59 miles	<b>Grade 1</b>	8
<b>Gender</b>	Coed	<b>Grade 2</b>	8
<b>Grades</b>	Prekindergarten - Grade 6	<b>Grade 3</b>	8
<b>Affiliation</b>	Christian (no specific denomination)	<b>Grade 4</b>	8
<b>Student Teacher Ratio</b>	1:8.3	<b>Grade 5</b>	9
<b>Full Time Equivalent Administrators</b>	6.5	<b>Grade 6</b>	2
		<b>Total</b>	120

## RAINIER CHRISTIAN SCHOOLS

<b>Address</b>	PO BOX 2578 RENTON, WA 98056-0578	<b>Prekindergarten</b>	64
<b>Phone Number</b>	425-228-9897	<b>Kindergarten</b>	12
<b>Distance from Subject Property</b>	1.72 miles	<b>Grade 1</b>	9
<b>Gender</b>	Coed	<b>Grade 2</b>	8
<b>Grades</b>	Prekindergarten - Grade 6	<b>Grade 3</b>	6
<b>Affiliation</b>	Christian (no specific denomination)	<b>Grade 4</b>	8
<b>Student Teacher Ratio</b>	1:9.6	<b>Grade 5</b>	7
<b>Full Time Equivalent Administrators</b>	5.6	<b>Grade 6</b>	4
		<b>Total</b>	118

## RENTON CHRISTIAN SCHOOL

<b>Address</b>	15717 152ND AVENUE SE RENTON, WA 98058-6330	<b>Kindergarten</b>	95
<b>Phone Number</b>	425-226-0820	<b>Grade 1</b>	59
<b>Distance from Subject Property</b>	2.03 miles	<b>Grade 2</b>	51
<b>Gender</b>	Coed	<b>Grade 3</b>	50
<b>Grades</b>	Kindergarten - Grade 9	<b>Grade 4</b>	46
<b>Affiliation</b>	Assembly of God	<b>Grade 5</b>	46
<b>Student Teacher Ratio</b>	1:17.4	<b>Grade 6</b>	41
<b>Full Time Equivalent Administrators</b>	27	<b>Grade 7</b>	37
		<b>Grade 8</b>	36
		<b>Grade 9</b>	8
		<b>Total</b>	469

**CEDAR RIVER MONTESSORI SCHOOL**

<b>Address</b>	15828 SE JONES ROAD RENTON, WA 98058-8141	<b>Prekindergarten</b>	26
<b>Phone Number</b>	425-271-9614	<b>Kindergarten</b>	16
<b>Distance from Subject Property</b>	2.16 miles	<b>Grade 1</b>	10
<b>Gender</b>	Coed	<b>Grade 2</b>	3
<b>Grades</b>	Prekindergarten - Grade 6	<b>Grade 3</b>	6
<b>Affiliation</b>	Nonsectarian	<b>Grade 4</b>	5
<b>Student Teacher Ratio</b>	1:8.6	<b>Grade 5</b>	2
<b>Full Time Equivalent Administrators</b>	5.6	<b>Grade 6</b>	6
		<b>Total</b>	74

**ST ANTHONY ELEMENTARY SCHOOL**

<b>Address</b>	336 SHATTUCK AVENUE S RENTON, WA 98057-2429	<b>Kindergarten</b>	57
<b>Phone Number</b>	425-255-0059	<b>Grade 1</b>	60
<b>Distance from Subject Property</b>	2.42 miles	<b>Grade 2</b>	58
<b>Gender</b>	Coed	<b>Grade 3</b>	58
<b>Grades</b>	Kindergarten - Grade 8	<b>Grade 4</b>	57
<b>Affiliation</b>	Roman Catholic	<b>Grade 5</b>	59
<b>Student Teacher Ratio</b>	1:16.5	<b>Grade 6</b>	59
<b>Full Time Equivalent Administrators</b>	31.5	<b>Grade 7</b>	59
		<b>Grade 8</b>	53
		<b>Total</b>	520

**CITY KIDS**

<b>Address</b>	PO BOX 1604 RENTON, WA 98057-1604	<b>Prekindergarten</b>	20
<b>Phone Number</b>	425-264-0432	<b>Kindergarten</b>	3
<b>Distance from Subject Property</b>	2.51 miles	<b>Total</b>	23
<b>Gender</b>	Coed		
<b>Grades</b>	Prekindergarten - Kindergarten		
<b>Affiliation</b>	Nonsectarian		
<b>Student Teacher Ratio</b>	1:1.3		
<b>Full Time Equivalent Administrators</b>	2.4		

**FAMILY CIRCLE**

<b>Address</b>	10717 SE 172ND STREET RENTON, WA 98055-5487	<b>Prekindergarten</b>	30
<b>Phone Number</b>	425-271-9119	<b>Kindergarten</b>	30
<b>Distance from Subject Property</b>	3.20 miles	<b>Total</b>	60
<b>Gender</b>	Coed		
<b>Grades</b>	Prekindergarten - Kindergarten		
<b>Affiliation</b>	Nonsectarian		
<b>Student Teacher Ratio</b>	1:15.0		
<b>Full Time Equivalent Administrators</b>	2		

**MAPLE VALLEY CHRISTIAN SCHOOL**

<b>Address</b>	PO BOX 58129 RENTON, WA 98058-1129	<b>Prekindergarten</b>	54
<b>Phone Number</b>	425-226-4640	<b>Kindergarten</b>	27
<b>Distance from Subject Property</b>	3.20 miles	<b>Grade 1</b>	25
<b>Gender</b>	Coed	<b>Grade 2</b>	34
<b>Grades</b>	Prekindergarten - Grade 6	<b>Grade 3</b>	35
<b>Affiliation</b>	Christian (no specific denomination)	<b>Grade 4</b>	14
<b>Student Teacher Ratio</b>	1:12.8	<b>Grade 5</b>	33
<b>Full Time Equivalent Administrators</b>	15.9	<b>Grade 6</b>	35
		<b>Total</b>	257

**RAINIER CHRISTIAN SCHOOLS-MAPLE VALLEY**

<b>Address</b>	PO BOX 58129 RENTON, WA 98058-1129	<b>Prekindergarten</b>	60
<b>Phone Number</b>	425-226-4640	<b>Kindergarten</b>	26
<b>Distance from Subject Property</b>	3.20 miles	<b>Grade 1</b>	25
<b>Gender</b>	Coed	<b>Grade 2</b>	33
<b>Grades</b>	Prekindergarten - Grade 6	<b>Grade 3</b>	33
<b>Affiliation</b>	Christian (no specific denomination)	<b>Grade 4</b>	14
<b>Student Teacher Ratio</b>	1:12.9	<b>Grade 5</b>	33
<b>Full Time Equivalent Administrators</b>	15.4	<b>Grade 6</b>	35
		<b>Total</b>	259



**RAINIER CHRISTIAN SCHOOLS**

<b>Address</b>	PO BOX 58249 RENTON, WA 98058-1249	<b>Prekindergarten</b>	131
<b>Phone Number</b>	253-852-6393	<b>Kindergarten</b>	115
<b>Distance from Subject Property</b>	3.20 miles	<b>Grade 1</b>	68
<b>Gender</b>	Coed	<b>Grade 2</b>	76
<b>Grades</b>	Prekindergarten - Grade 12	<b>Grade 3</b>	76
<b>Affiliation</b>	Christian (no specific denomination)	<b>Grade 4</b>	51
<b>Student Teacher Ratio</b>	1:10.1	<b>Grade 5</b>	67
<b>Full Time Equivalent Administrators</b>	76.9	<b>Grade 6</b>	60
		<b>Grade 7</b>	56
		<b>Grade 8</b>	57
		<b>Grade 9</b>	47
		<b>Grade 10</b>	38
		<b>Grade 11</b>	35
		<b>Grade 12</b>	34
		<b>Total</b>	911

**NEW HORIZON SCHOOL**

<b>Address</b>	1111 S CARR ROAD RENTON, WA 98055-5839	<b>Grade 6</b>	3
<b>Phone Number</b>	425-226-3717	<b>Grade 7</b>	6
<b>Distance from Subject Property</b>	3.38 miles	<b>Grade 8</b>	9
<b>Gender</b>	Coed	<b>Grade 9</b>	16
<b>Grades</b>	Grade 6 - Grade 12	<b>Grade 10</b>	11
<b>Affiliation</b>	Nonsectarian	<b>Grade 11</b>	12
<b>Student Teacher Ratio</b>	1:6.3	<b>Grade 12</b>	6
<b>Full Time Equivalent Administrators</b>	10	<b>Total</b>	63

**KING OF KINGS LUTHERAN PRESCHOOL**

<b>Address</b>	18207 108TH AVENUE SE RENTON, WA 98055-6440	<b>Prekindergarten</b>	86
<b>Phone Number</b>	425-255-8520	<b>Kindergarten</b>	14
<b>Distance from Subject Property</b>	3.49 miles	<b>Total</b>	100
<b>Gender</b>	Coed		
<b>Grades</b>	Prekindergarten - Kindergarten		
<b>Affiliation</b>	Lutheran Church - Missouri Synod		
<b>Student Teacher Ratio</b>	1:14.0		
<b>Full Time Equivalent Administrators</b>	1		

**About****Private Schools**

As private schools are not subject to district boundaries, we list up to 15 of the schools closest to the subject property within a five mile radius of the subject property.

**Disclaimer**

THIS REPORT IS INTENDED FOR USE BY YOU AS AN END USER SOLELY FOR YOUR INTERNAL BUSINESS PURPOSES. YOU SHALL NOT RESELL, RELICENSE OR REDISTRIBUTE THIS REPORT, IN WHOLE OR IN PART. THE USE OF THIS REPORT BY ANY PARTY OTHER THAN YOURSELF FOR ANY PURPOSE IS STRICTLY PROHIBITED. THIS REPORT IS PROVIDED AS-IS WITHOUT WARRANTY OF ANY KIND, EITHER EXPRESS OR IMPLIED, INCLUDING WITHOUT LIMITATION, ANY WARRANTIES OF MERCHANTABILITY, NON-INFRINGEMENT, OR FITNESS FOR A PARTICULAR PURPOSE. INTERCONTINENTAL EXCHANGE, INC. (ICE) SHALL HAVE NO LIABILITY IN CONTRACT, TORT, OR OTHERWISE ARISING OUT OF OR IN CONNECTION WITH THIS REPORT. ICE DOES NOT REPRESENT OR WARRANT THAT THE REPORT IS COMPLETE OR FREE FROM ERROR. YOU UNDERSTAND AND ACKNOWLEDGE THAT THE AVAILABILITY, COMPLETENESS AND FORMAT OF THE DATA ELEMENTS MAY VARY SUBSTANTIALLY FROM AREA-TO-AREA. THE INFORMATION CONTAINED IN THIS REPORT IS DERIVED FROM PUBLICLY AVAILABLE SOURCES FOR THE SUBJECT PROPERTY OR COMPARABLE PROPERTIES LISTED ABOVE AND HAS NOT BEEN INDEPENDENTLY VERIFIED BY ICE THROUGH ANY FORM OF INSPECTION OR REVIEW. THIS REPORT DOES NOT CONSTITUTE AN APPRAISAL OF ANY KIND AND SHOULD NOT BE USED IN LIEU OF AN INSPECTION OF A SUBJECT PROPERTY BY A LICENSED OR CERTIFIED APPRAISER. THIS REPORT CONTAINS NO REPRESENTATIONS, OPINIONS OR WARRANTIES REGARDING THE SUBJECT PROPERTY'S ACTUAL MARKETABILITY, CONDITION (STRUCTURAL OR OTHERWISE), ENVIRONMENTAL, HAZARD OR FLOOD ZONE STATUS, AND ANY REFERENCE TO ENVIRONMENTAL, HAZARD OR FLOOD ZONE STATUS IS FOR INFORMATIONAL PURPOSES ONLY AND SHALL BE INDEPENDENTLY VERIFIED BY THE END USER. THE INFORMATION CONTAINED HEREIN SHALL NOT BE UTILIZED: (A) TO REVIEW OR ESTABLISH A CONSUMER'S CREDIT AND/OR INSURANCE ELIGIBILITY OR FOR ANY OTHER PURPOSE THAT WOULD CAUSE THE REPORT TO CONSTITUTE A "CONSUMER REPORT" UNDER THE FAIR CREDIT REPORTING ACT, 15 U.S.C. § 1681 ET SEQ.; OR (B) IN CONNECTION WITH CERTIFICATION OR AUTHENTICATION OF REAL ESTATE OWNERSHIP AND/OR REAL ESTATE TRANSACTIONS. ADDITIONAL TERMS AND CONDITIONS SHALL APPLY PURSUANT TO THE APPLICABLE AGREEMENT.

**Copyright**

CONFIDENTIAL, PROPRIETARY AND/OR TRADE SECRET. TM SM ® TRADEMARK(S) OF INTERCONTINENTAL EXCHANGE, INC. AND ITS SUBSIDIARIES AND AFFILIATES.  
© 2024 INTERCONTINENTAL EXCHANGE, INC. ALL RIGHTS RESERVED.