



53779 Generations Dr.

South Bend, IN, 46635

A well-located professional office space offering strong visibility and easy, convenient access to major roads. Surrounded by a growing community and nearby amenities, this location is perfect for businesses seeking a centrally located office.

Highlights

- 1,549 SF of modern office space available for lease, with flexible layout options
- Conveniently located near SR 23 and Douglas Road, offering easy access to key South Bend destinations
- Close to Memorial Hospital and St. Joseph Regional Medical Center, ideal for medical, professional, or support services
- Well-maintained building with a ractive exterior and professional interior finishes; two suites currently available
- Situated in Foundation Center Office Park on Generations Drive, a premier business community with a strong mix of professional tenants

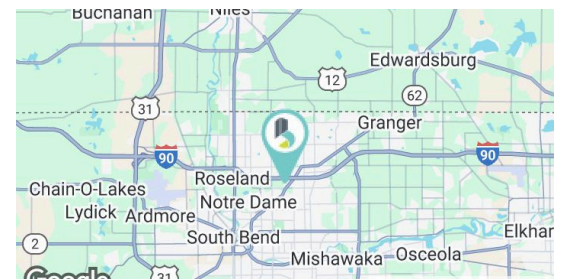
Lease Rate \$22.00 (MG)

Leasable 1,549 SF

Building Size (SF) 8,235 SF

Zoning B

Traffic Count ADT 26,323 (SR 23)



Gage Hudak, CCIM

ghudak@bradleyco.com
c 574.855.5706

John Jessen

jjessen@bradleyco.com
c 574.968.9270

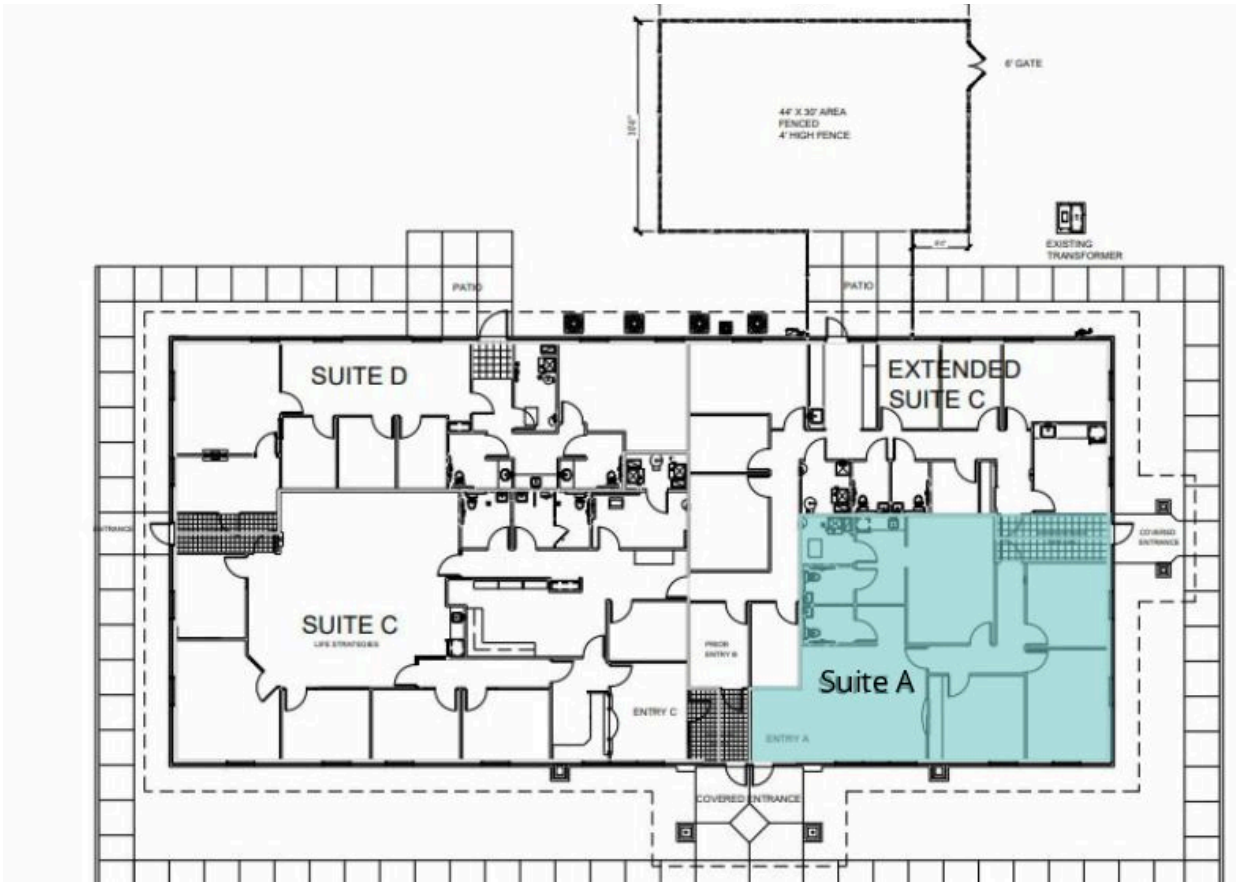
Rebecca Ward

rward@bradleyco.com
c 574.855.5718

www.bradleyco.com

Plans

53779 Generations Dr., South Bend, IN 46635



Spaces	Lease Rate	Space Size	Lease Type
Suite A	\$22/SF/Year	1,549 sqft	MG

Photos

53779 Generations Dr., South Bend, IN 46635



Photos

53779 Generations Dr., South Bend, IN 46635



Retailer Map

