

Office Space **AVAILABLE** FOR LEASE

2000
Oak Street
Bakersfield, CA

Property Highlights

- Second floor availability
- Convenient downtown location with easy access to Highway 99 and Westside Parkway
- Prominent monument signage available on Oak Street and 21st Street
- Upgraded interior improvements throughout
- New elevator installed 2017
- Private restroom in suite



The information contained herein may have been obtained from sources other than ASU Commercial. We have not verified such information and make no guarantees, warranties or representations about such information. It is your responsibility to independently confirm its accuracy and completeness prior to purchasing/leasing the property.



Matthew E. Starr, SIOR, CCIM • Principal • 661 616 3570 • matthew@asuassociates.com • CA RE #01367855
Martin J. Starr • Principal • 661 616 3567 • mjstarr@asuassociates.com • CA RE #01179469
11601 Bolthouse Drive Suite 110 • Bakersfield, CA 93311 • 661 862 5454 main • 661 862 5444 fax

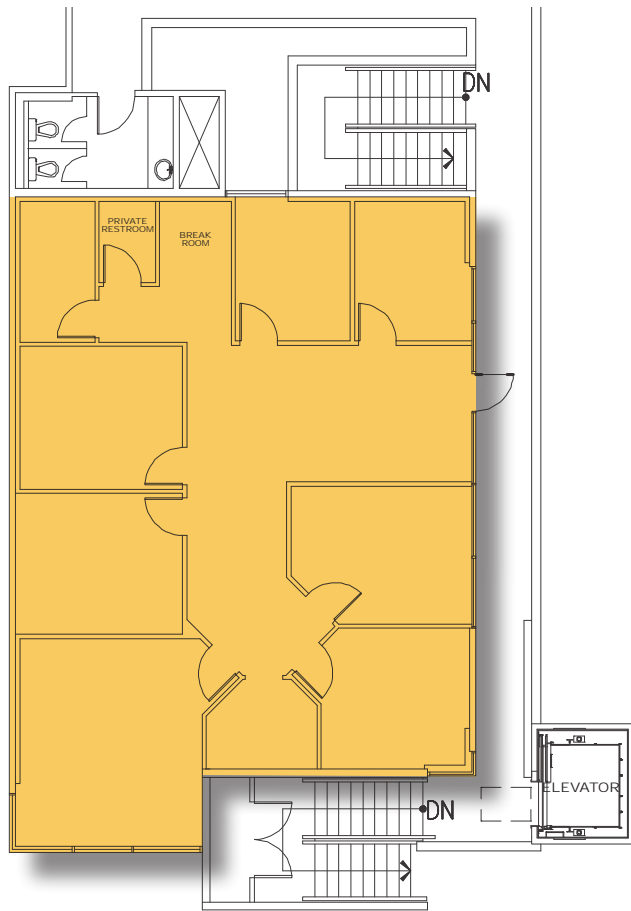
Office Space Available For Lease

Second Floor Availability | Floor Plan

2000 Oak Street - Suite 200 - Bakersfield, CA

Lease Offering

- **Availability** Suite 200 - 1,891SF
- **Rental Rate** \$1.75 per RSF Modified Gross, excluding utilities and janitorial services
- **Tenant Improvements** Negotiable



*Plans deemed to be accurate, but not guaranteed. Plan not to scale.

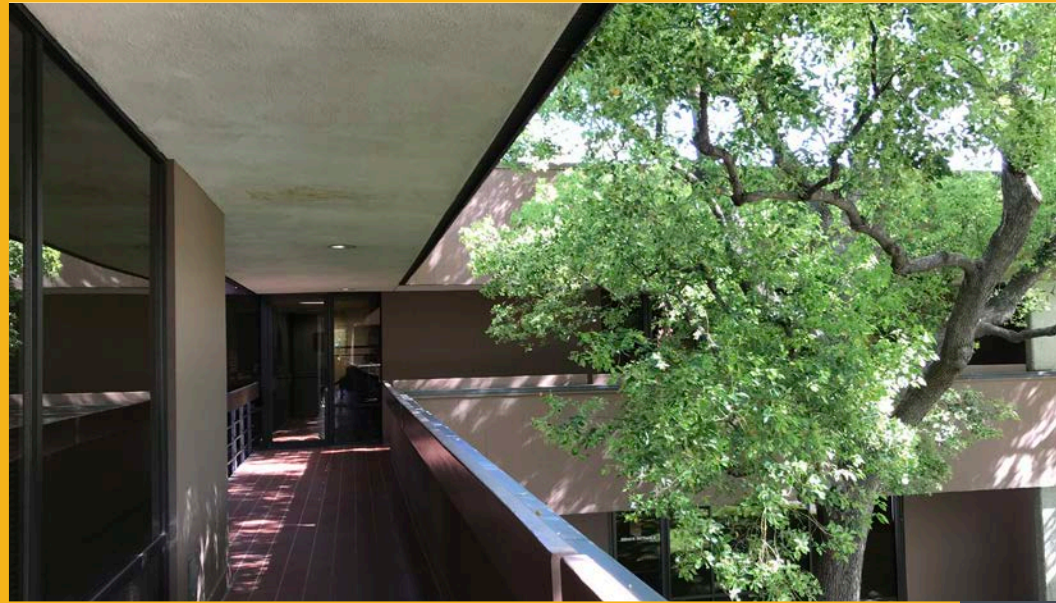


Matthew E. Starr, SIOR, CCIM ▪ Principal ▪ 661 616 3570 ▪ matthew@asuassociates.com ▪ CA RE #01367855
Martin J. Starr ▪ Principal ▪ 661 616 3567 ▪ mjstarr@asuassociates.com ▪ CA RE #01179469
11601 Bolthouse Drive Suite 110 ▪ Bakersfield, CA 93311 ▪ 661 862 5454 main ▪ 661 862 5444 fax

Office Space Available For Lease

Property Photos

2000 Oak Street - Suite 200 - Bakersfield, CA



Office Space Available For Lease

Aerial of University Centre Submarket

2000 Oak Street - Suite 200 - Bakersfield, CA



Matthew E. Starr, SIOR, CCIM - Principal - 661 616 3570 - matthew@asuassociates.com - CA RE #01367855
Martin J. Starr - Principal - 661 616 3567 - mjstarr@asuassociates.com - CA RE #01179469
11601 Bolthouse Drive Suite 110 - Bakersfield, CA 93311 - 661 862 5454 main - 661 862 5444 fax