

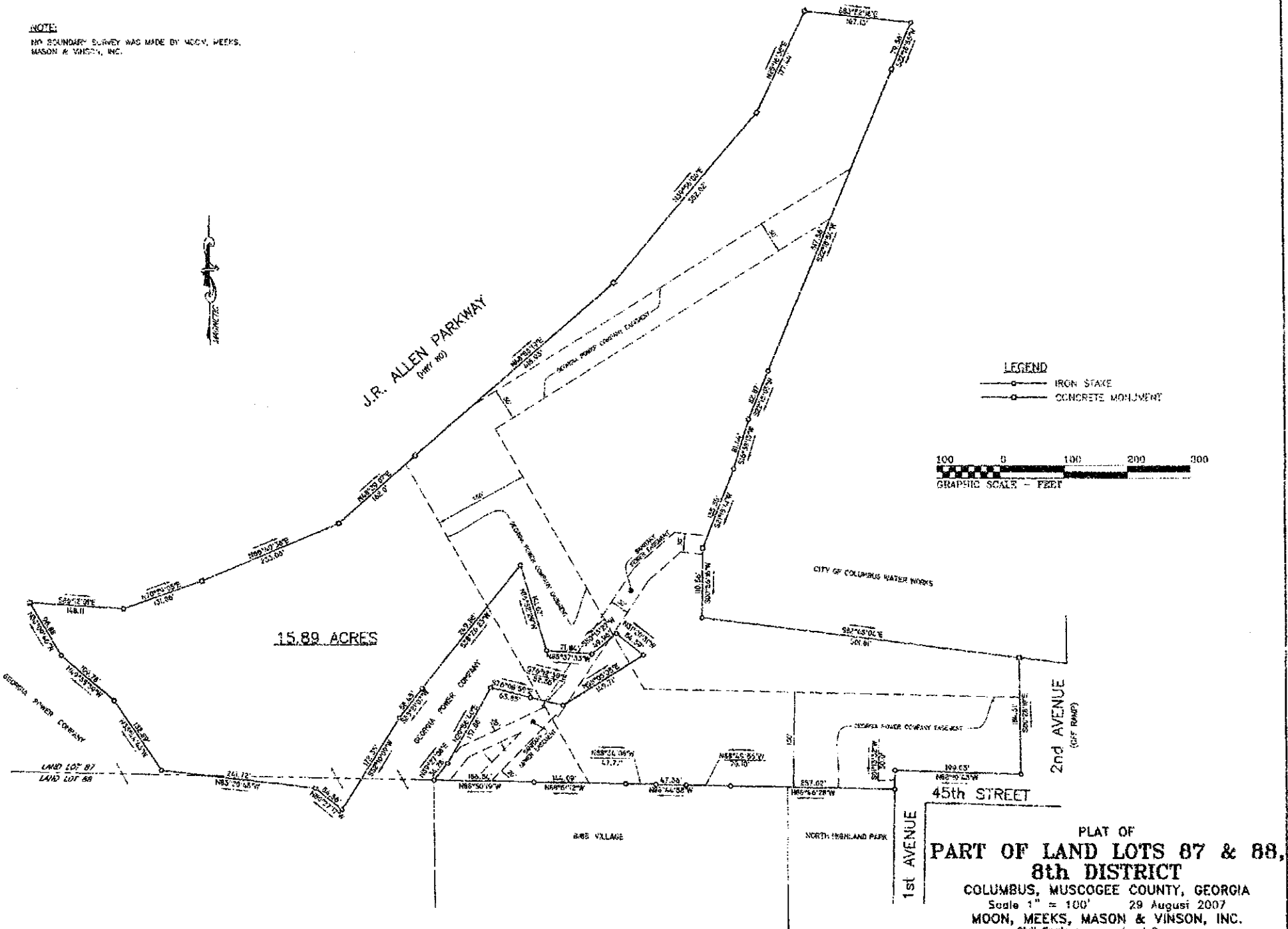
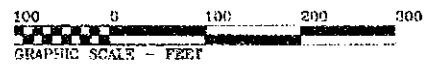
NOTE:
 NO BOUNDARY SURVEY WAS MADE BY MOON, MEEKS,
 MASON & VINSON, INC.



J.R. ALLEN PARKWAY
 (PWT #0)

15.89 ACRES

LEGEND
 —○— IRON STAKE
 —□— CONCRETE MONUMENT



PLAT OF
PART OF LAND LOTS 87 & 88,
8th DISTRICT
 COLUMBUS, MUSCOGEE COUNTY, GEORGIA
 Scale 1" = 100' 29 August 2007
MOON, MEEKS, MASON & VINSON, INC.
 Civil Engineers - Land Surveyors
 3900 Rosemont Drive, Columbus, Georgia, 31904
 (706) 327-8306