



11 Poplar Ave  
Wilmington, DE 19805

For Lease

## Property Description

Unlock the potential of your business with this highly visible and versatile commercial space in the heart of Wilmington. Located at 11 Poplar Ave, this property offers flexible square footage ideal for retail, office, or service-based businesses. Benefit from easy access to major roadways, ample foot traffic, and nearby residential neighborhoods. With on-site parking and a clean, open layout ready for customization, this is the perfect spot to grow your business.

## Property Details

- Unique opportunity to lease space and be part of the Elsmere Town Hall complex & New Castle County Library
- At grade automatic glass entrance shared with New Castle County Library & a separate entrance off Poplar Ave.
- Elevator service
- New windows to be installed in the fall 2025
- Existing Fire Alarm System
- Kitchen has updated Ansul suppression system for hood and new gas stove
- Kitchen has cafeteria style set up with open spaces for tables
- Office /assembly/kitchen areas have new ceiling mounted mini-split HVAC systems
- Three (3) restrooms
- Ample parking shared with Town Hall & New Castle County Library
- Existing playground equipment on site
- Ideal for educational, church/religious, administrative offices for nonprofit or daycare type uses
- Close to many eateries and coffee shops along Kirkwood Highway retail corridor

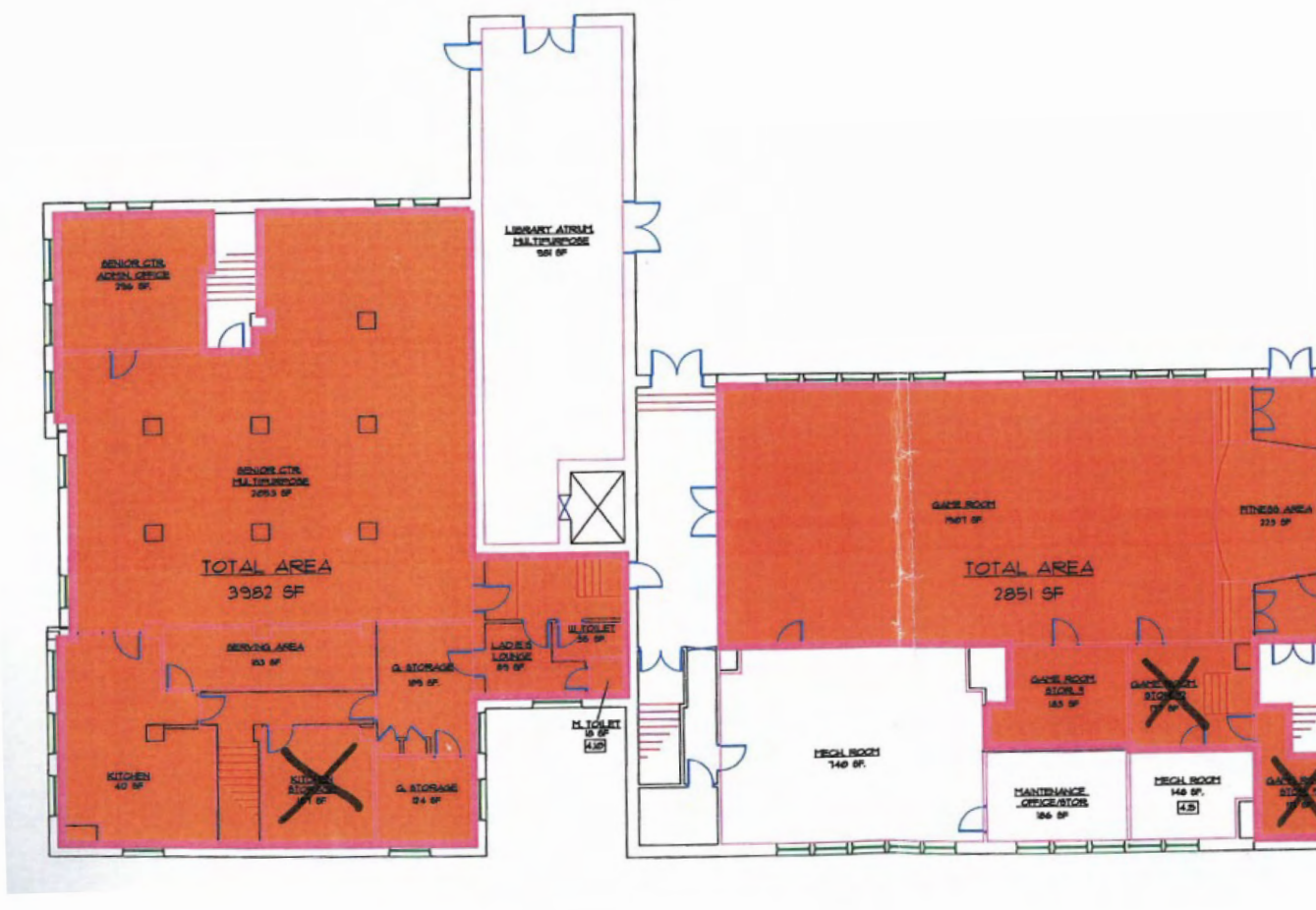
















11 Poplar Ave  
Wilmington, DE 19805

For Lease

**Exterior Entrance**



**Interior Atrium Entrance**

