

# Class "A" Office Available For Lease

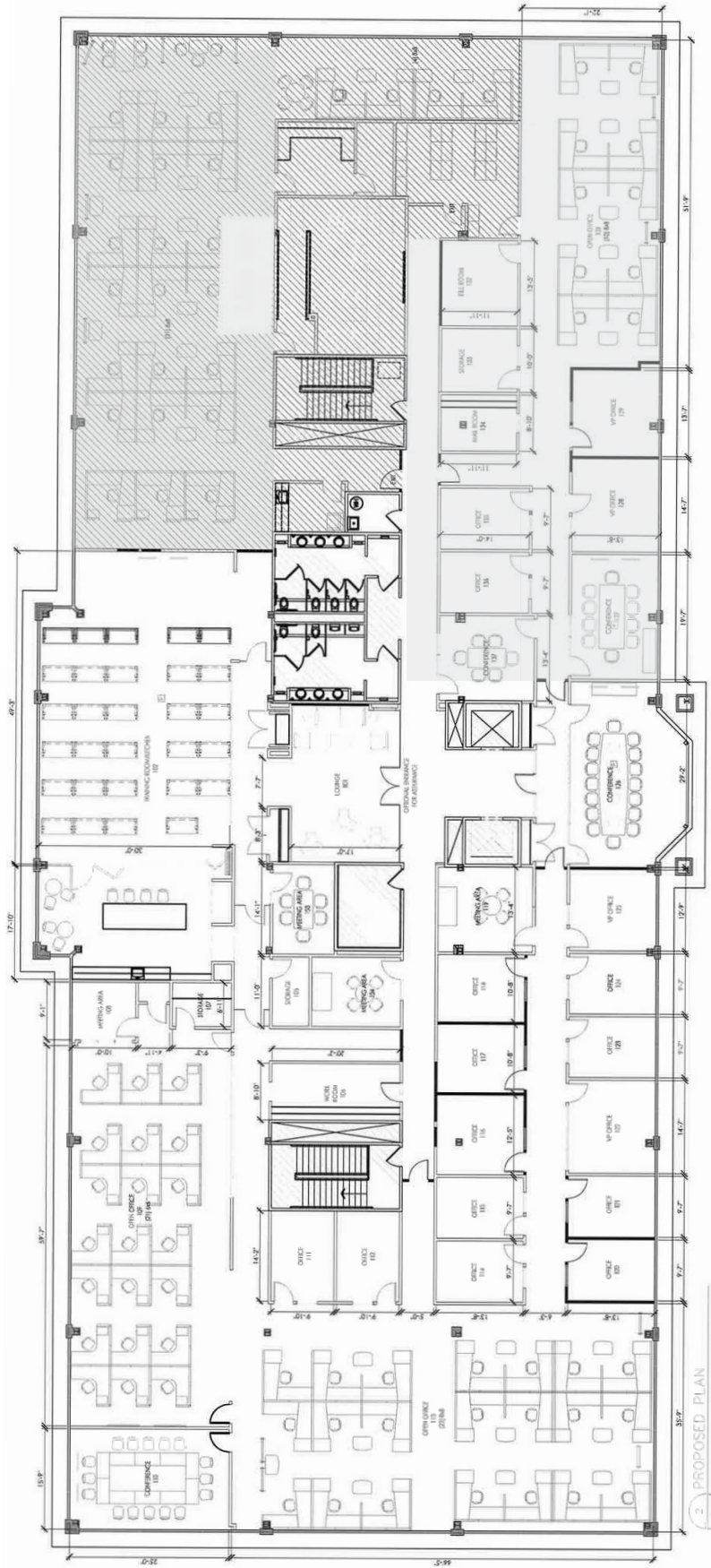


## 800 Adams Ave Valley Forge, PA



For More Information Contact:  
**Frank O'Neill 484 684 4198**

Arlington Group Real Estate, Licensed Real Estate Broker



2 PROPOSED PLAN



Designed For: **800 Adams Fitness**  
 Plan Number: \_\_\_\_\_ Date: **03/5/20**  
 Version: **Opt.1 v1** Approx SF: **n/a**  
 Design Consultant: **Jaime Salazar** P: 323-432-4811  
 E: jsalazar@fitnessdesigngroup.com

Room specifications included in this layout have been approved for FDG by the client. These specifications may include information on room dimensions as well as ceiling height, placement of windows, doors, closets, electrical, audio/visual, lighting and any pre-existing equipment. This design submission represents a proposed layout for equipment placement purposes only, and should not serve as a replacement for licensed architectural measurement and specification of electrical, mechanical, or other permanent facility alterations.

This document contains information proprietary to Fitness Design Group and is furnished in confidence for the limited purpose of evaluation, bidding, or review. This document or its contents may not be used for any other purpose and may not be reproduced or disclosed to others without prior written consent of Fitness Design Group.

© 2017 Fitness Design Group, Inc. All rights reserved.



fitnessdesigngroup.com



Designed For: **800 Adams Fitness**  
 Plan Number: \_\_\_\_\_ Date: **03/5/20**  
 Version: **Opt.1 v1** Approx SF: **n/a**  
 Design Consultant: **Jaime Salazar** P: 323-432-4811  
 E: jsalazar@fitnessdesigngroup.com

Room specifications included in this layout have been approved for FDG by the client. These specifications may include information on room dimensions as well as ceiling height, placement of windows, doors, closets, electrical, audio/visual, lighting and any pre-existing equipment. This design submission represents a proposed layout for equipment placement purposes only, and should not serve as a replacement for licensed architectural measurement and specification of electrical, mechanical, or other permanent facility alterations.

This document contains information proprietary to Fitness Design Group and is furnished in confidence for the limited purpose of evaluation, bidding, or review. This document or its contents may not be used for any other purpose and may not be reproduced or disclosed to others without prior written consent of Fitness Design Group.

© 2017 Fitness Design Group, Inc. All rights reserved.



fitnessdesigngroup.com

## BUILDING HIGHLIGHTS

- Up to 11,000 SF available on the 3<sup>rd</sup> Floor
- 4/1000 parking
- Brand new state of the art Fitness Center with TV and showers
- Complimentary Coffee Bar
- European style bathrooms
- 9' ceilings
- An oversized VAV system
- Main Secondary Entrance
- 5 Minutes from the King of Prussia Mall and Town Center
- Located adjacent to Starbucks, First Watch, Wawa and More.



For More Information Contact:  
**Frank O'Neill 484 684 4198**

Arlington Group Real Estate, Licensed Real Estate Broker