

FOR LEASE

THE CROSSINGS

11969-11975 Westline Industrial Dr.
St. Louis, MO 63146





THE CROSSINGS



**FOR
LEASE**

3,217 - 14,024 SF Available



Property Features

- First-class office building located in the heart of Westport
- Recently completed renovations include upgraded lobby and common areas, complemented with newly added collaboration spaces
- Building and monument signage opportunities
- 5:1,000 SF parking ratio
- Conveniently located near the intersection of I-270 and Page Avenue
- Minutes from St. Charles, Lambert-St. Louis International Airport, and Downtown St. Louis
- The Westport/Maryland Heights Submarket is home to Fortune 1000 companies including Centene, Edward Jones, and Graybar Electric

NEW AMENITIES!

**OUTDOOR
PATIO**



**PICKLEBALL
COURT**



AMENITIES NEARBY

WESTPORT PLAZA

Westport Plaza is a vibrant 42-acre business and entertainment district and is a mere 0.3 miles from The Crossings. It is centrally located and will allow you to get anywhere from St. Louis to St. Charles in just minutes.

Westport Plaza boasts 200,000 SF of restaurants, retail shops, and entertainment venues. Having Westport Plaza as your neighbor makes working, playing, and dining that much easier.

There are a lot of new and exciting things that have recently come to Westport Plaza. Check out just a few of them below.



NEW TO THE PLAZA



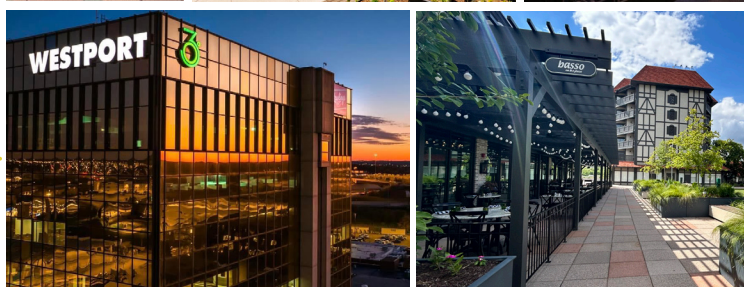
The Porter at Westport
255 luxury apartments | June 2025



New Courtyard
for concerts and shows in and around the plaza



Rawlings
New Headquarters | Now Open



New Restaurants
360 West | Now Open
Soda Fountain | Now Open
Basso | Now Open

WESTPORT DINING



City of
Maryland
Heights

THE CROSSINGS



360 WEST ROOFTOP

STARBUCKS



ST. LOUIS BREAD CO.

SODA FOUNTAIN

TRAINWRECK SALOON

KOBE JAPANESE GRILL

DRUNKEN FISH

McDONALD'S

BASSO ON THE PLAZA

FUZZY'S TACO SHOP

JOVICK BROTHERS' DELI

WESTPORT SOCIAL

WESTPORT PLAZA



PAGE AVENUE

PAGE AVENUE

CONTACT THE BROKERS



JOEL MEYER | SIOR

Principal
(314) 744-8992
jmeyer@intcre.com



MICHAEL BACKER | SIOR

Vice Preseident | Brokerage
(314) 744-8979
mbacker@intcre.com



ED BACKER | SIOR

Principal | Brokerage
(314) 744-8997
ebacker@intcre.com



ERICKA SEIDEL

Senior Associate | Brokerage
(314) 971-0750
eseidel@intcre.com



11701 BORMAN DRIVE | ST. LOUIS, MO 64146 | INTELICACRE.COM