

FOR SALE

5600 ELBOW DRIVE SW

RARE HIGH-EXPOSURE STANDALONE
OPPORTUNITY ALONG ELBOW DRIVE



KPLI
GLOBAL

Property Details

5600 ELBOW DRIVE SW

Property Type

Standalone Building

Land Size

5,965 sf

Building Size

1,127 sf (Main building)

287 sf (Secondary building)

1,414 sf (Total)

Year Built

1952

Property Tax

\$14,166.76/annum

Parking

Up to 9 stalls (surface tandem)

Street parking available

Zoning

Direct Control 54Z96



Property Highlights

Opportunity

Fully built-out dental facility

Location

Prime location on Elbow Drive

High Exposure

Pylon sign directly on Elbow Drive with excellent exposure

Parking

Ample on-site parking for up to 9 cars in tandem configuration

Free street parking

Flexible Zoning

Ideal for professional & health-service users

Amenity Rich

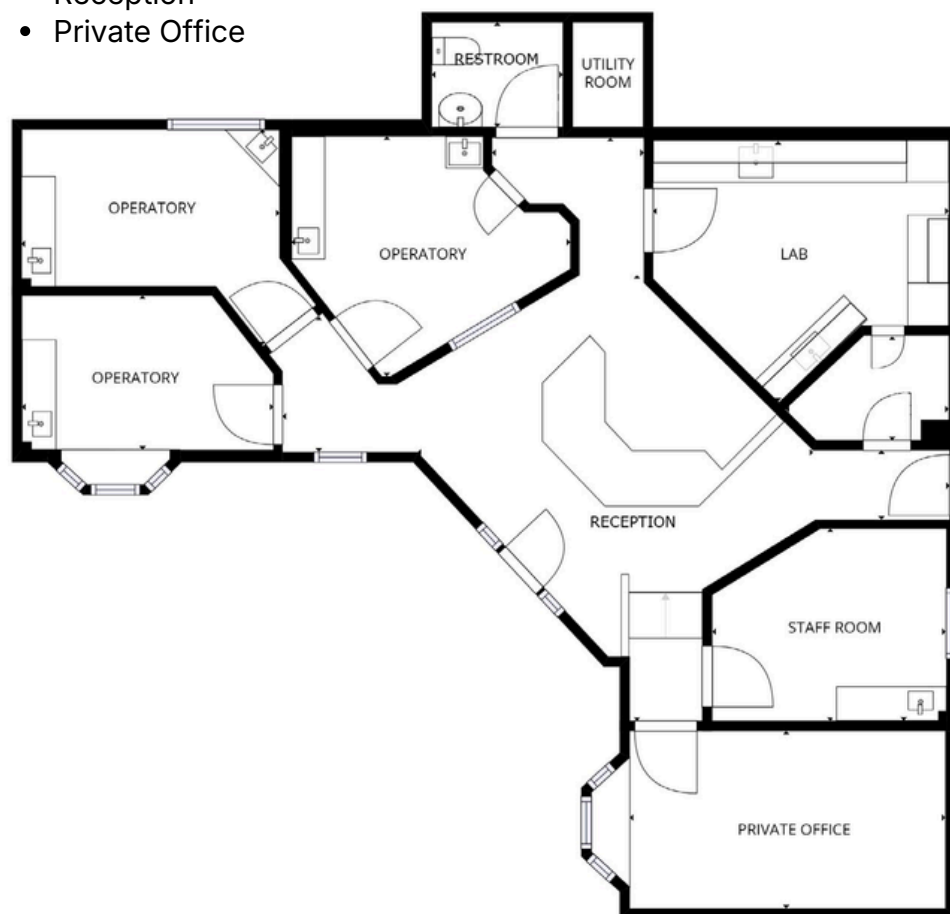
Minutes to Restaurants, Cafés, and amenities



Main Building

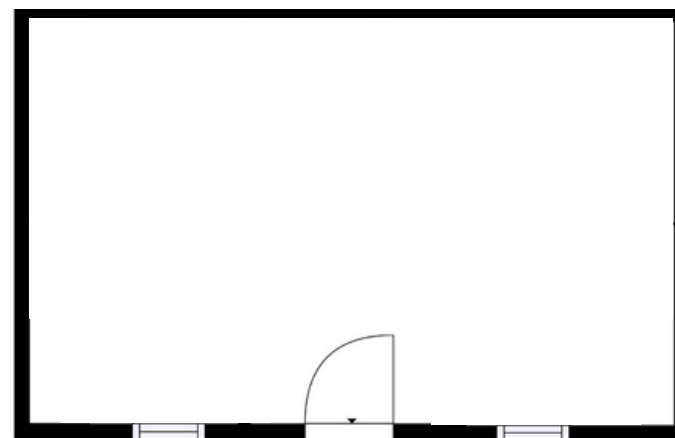
1,127 sf

- 3 Operatories
- Staff Room
- Dental Lab
- Reception
- Private Office



Secondary Structure

287 sf





FOR MORE INFORMATION



Estelle Tran

Managing Director

403 993 2898

estelle.tran@kpliglobal.com



Anastasiya Gryshchenko

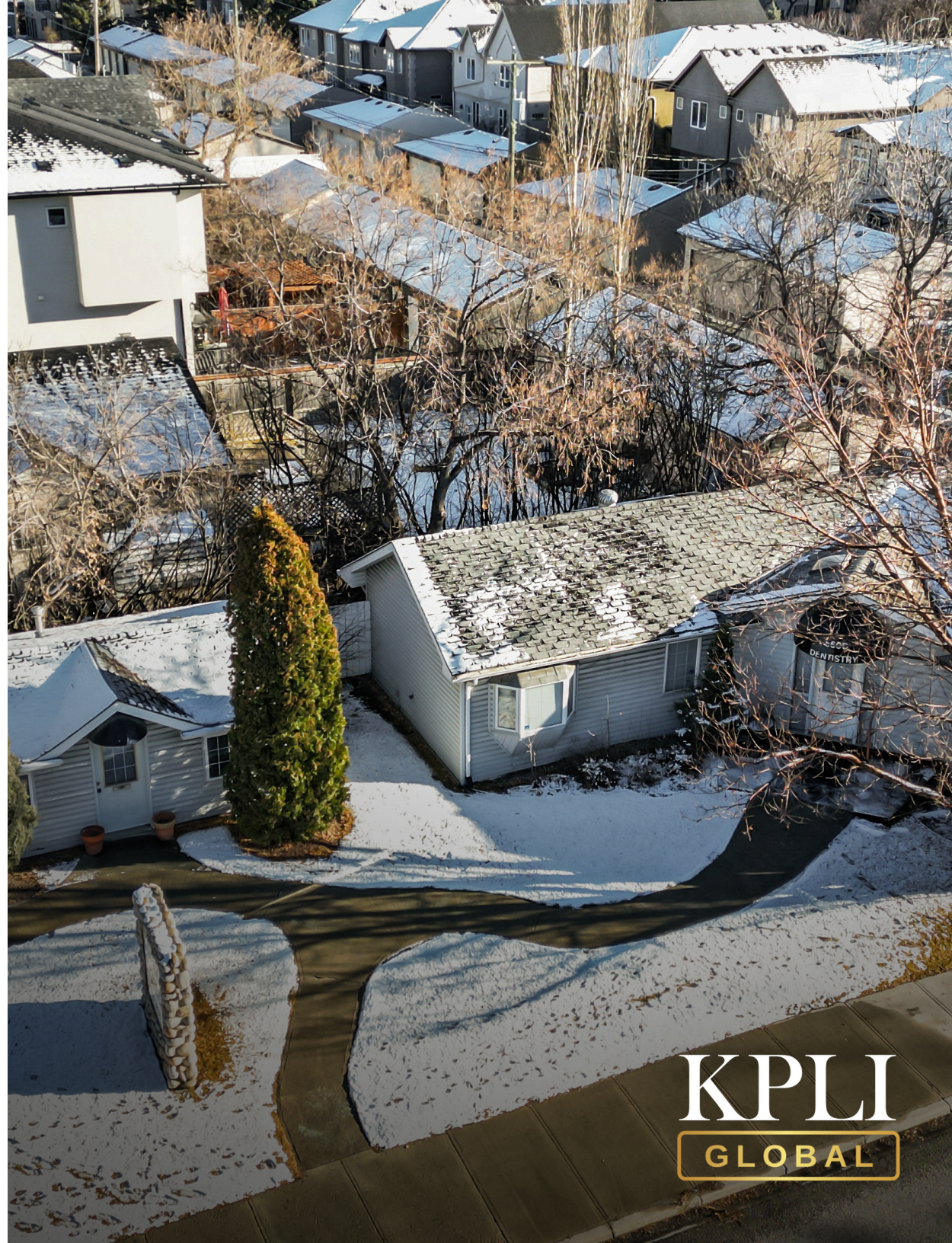
Vice President

825 994 2314

ana.gryshchenko@kpliglobal.com

KPLIGLOBAL.COM

© 2025 KPLI Global Corp. All rights reserved.



KPLI
GLOBAL