

LEASE AVAILABLE

I-94 & MOORLAND ROAD BROOKFIELD, WI

FOUNDERS 3
REAL ESTATE SERVICES

Specifications

AVAILABLE SPACE	1,300 SF
Center Size	11,000 SF
Lease Rate	Contact Broker
Lease Term	10 Years
Lease Type	NNN
Buildout	Negotiable
Add'l Charges	CAM, Ins., Taxes: \$8.00 PSF

Traffic Counts

Moorland Rd.	39,600 cpd
I-94	127,000 cpd

Demographics

	1 Mile	3 Miles	5 Miles
Pop.	5,405	46,953	151,146
Daytime Pop.	7,875	53,839	150,585
Median HH Inc.	\$64,395	\$77,758	\$69,253

Contact

Ross Koepsel, CCIM

Principal
414.249.2222
rkoepsel@founders3.com

Jon Thoresen

Principal
414.249.2211
jthoresen@founders3.com



414.271.1111 | www.founders3.com

Information shown herein was provided by Seller/Lessor and/or third parties and has not been verified by the broker unless otherwise indicated.

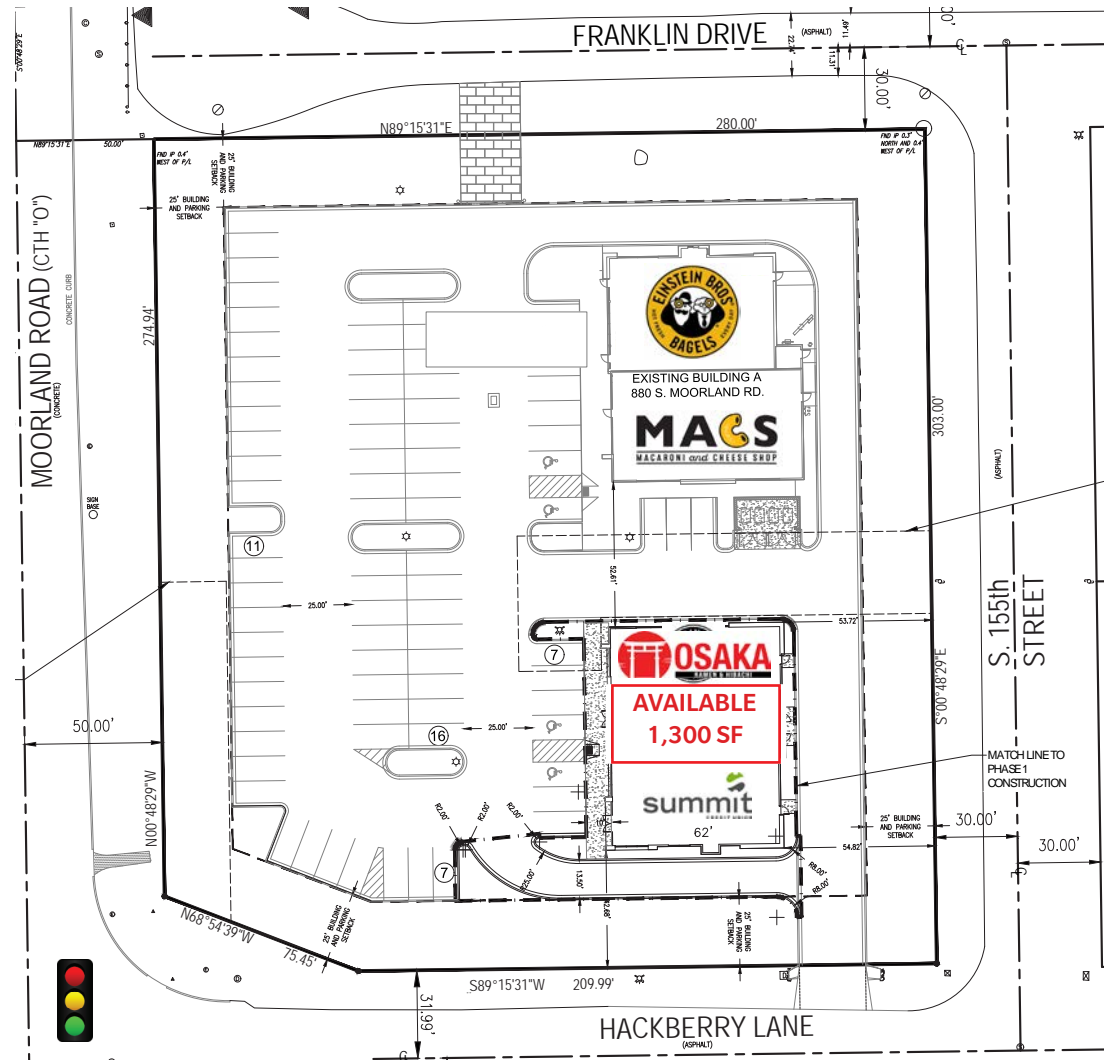
LEASE AVAILABLE

I-94 & MOORLAND ROAD BROOKFIELD, WI

FOUNDERS **3**
REAL ESTATE SERVICES

SITE PLAN

AVAILABLE SPACE 1,300 SF



414.271.1111 | wwwFOUNDERS3.com

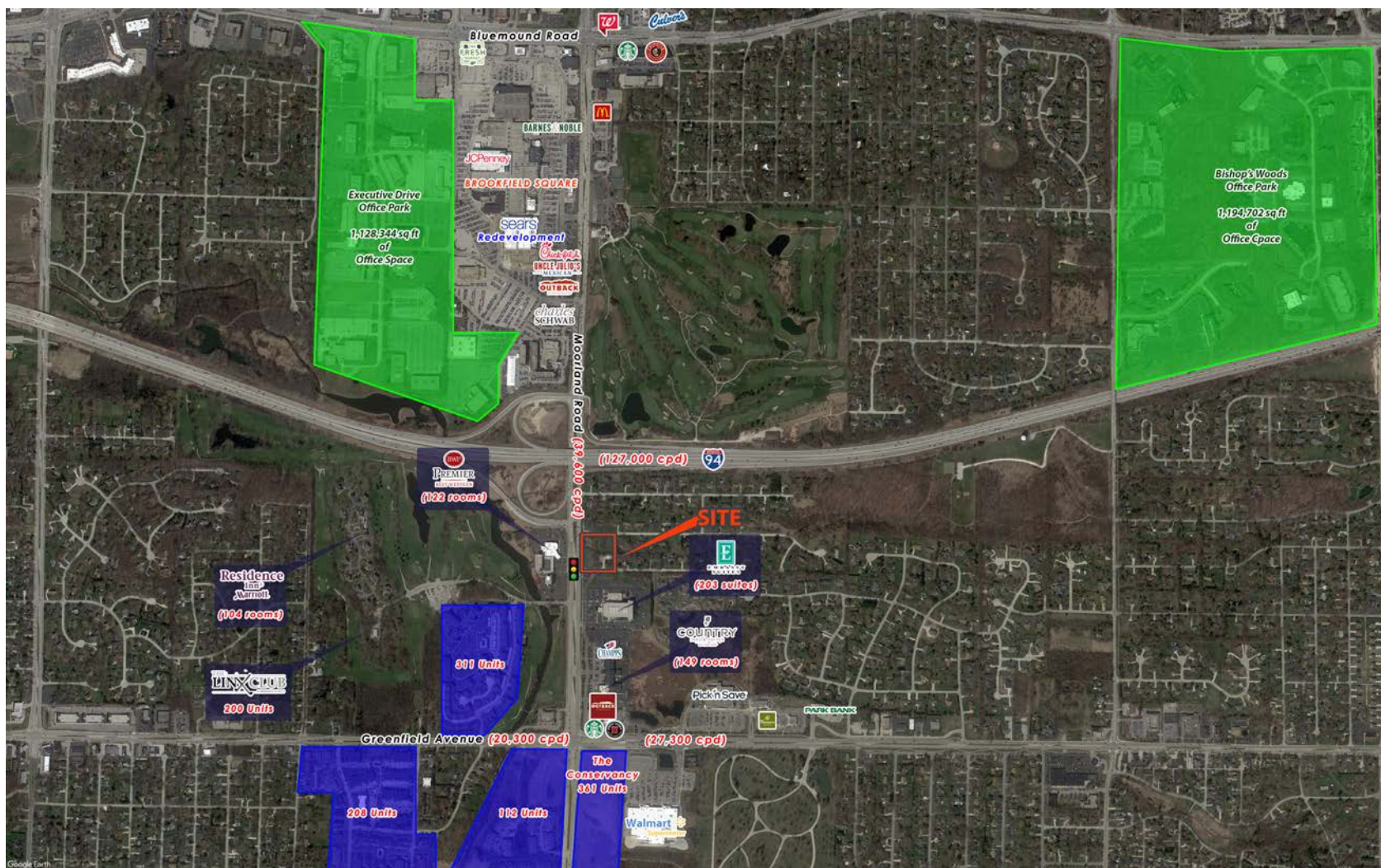
Information shown herein was provided by Seller/Lessor and/or third parties and has not been verified by the broker unless otherwise indicated.

LEASE AVAILABLE

I-94 & MOORLAND ROAD BROOKFIELD, WI

FOUNDERS **3**
REAL ESTATE SERVICES

AERIAL



414.271.1111 | wwwFOUNDERS3.com

Information shown herein was provided by Seller/Lessor and/or third parties and has not been verified by the broker unless otherwise indicated.

LEASE AVAILABLE

I-94 & MOORLAND ROAD
BROOKFIELD, WI

FOUNDERS **3**
REAL ESTATE SERVICES

NEARBY DEVELOPMENT - THE CONSERVANCY

THE CONSERVANCY

Residential Buildings

- Conservancy Center
- The Conservator
- Woodlands Residences
- Meadows Residences
- The Conservancy Resident Club



414.271.1111 | wwwFOUNDERS3.com

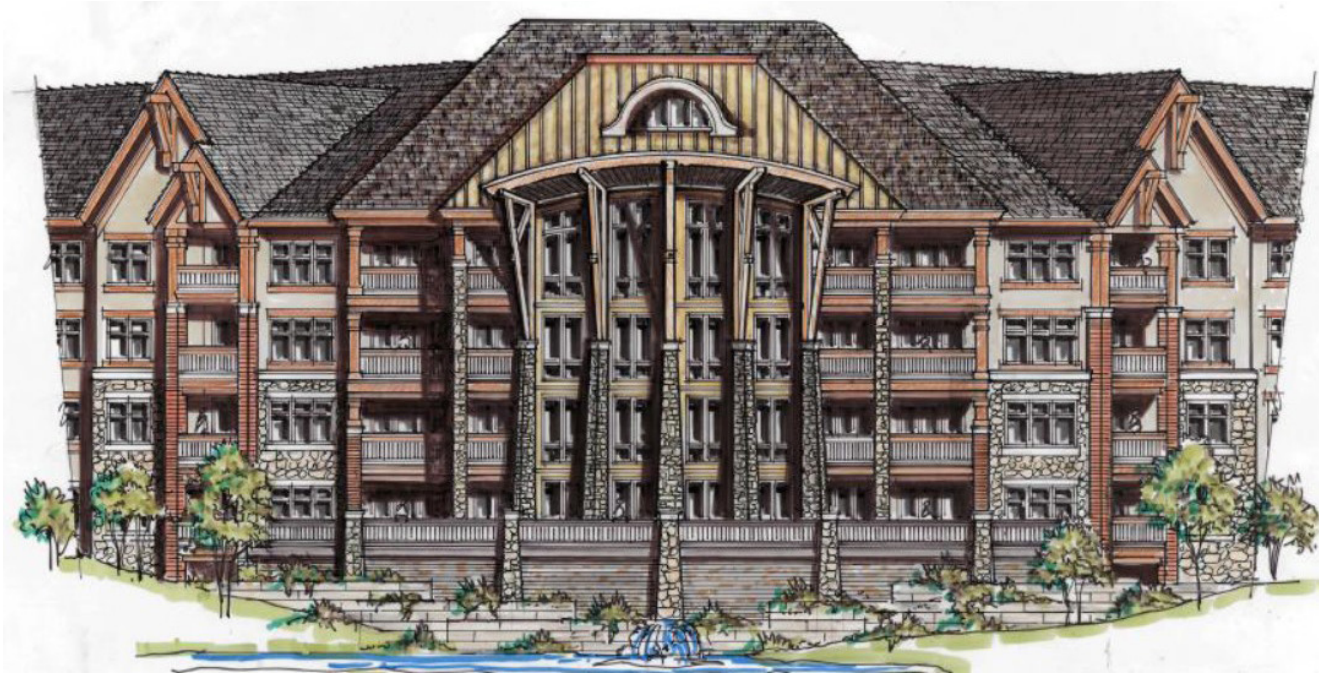
Information shown herein was provided by Seller/Lessor and/or third parties and has not been verified by the broker unless otherwise indicated.

LEASE AVAILABLE

I-94 & MOORLAND ROAD BROOKFIELD, WI

FOUNDERS **3**
REAL ESTATE SERVICES

NEARBY DEVELOPMENT - THE CONSERVANCY



WIMMER COMMUNITIES - THE CONSERVANCY

- Vacant 34 Acre parcel will be developed into hundreds of apartments and commercial space
- Wimmer Communities purchased the site in August 2024 for \$11 million
- 361 market-rate apartments and commercial space planned in a town center-style neighborhood
- Known as the Conservancy, Wimmer's project would be walkable and interwoven with nature trails, woodlands, wetlands, ponds, and greenspace
- A nearby clubhouse for residents will include an outdoor pool, pet space, and health club
- The development will include a mix of one-, two-, and three-bedroom apartment units and nearly 700 parking spaces are proposed, including a mix of surface parking and garage spaces
- Work on Phase I will begin in August 2025 with the completion of the final phase by the end of 2029
- The Conservancy is estimated to be worth more than \$63 million at full buildout



414.271.1111 | wwwFOUNDERS3.com

Information shown herein was provided by Seller/Lessor and/or third parties and has not been verified by the broker unless otherwise indicated.

STATE OF WISCONSIN
BROKER DISCLOSURE

Wisconsin law requires all real estate licenses to give the following information about brokerage services to prospective customers.

Prior to negotiating on your behalf the Brokerage firm, or an agent associated with the firm, must provide you the following disclosure statement.

Disclosure to Customers

You are a customer of the brokerage firm (hereinafter Firm). The Firm is either an agent of another party in the transaction or a subagent of another firm that is the agent of another party in the transaction. A broker or a salesperson acting on behalf of the Firm may provide brokerage services to you. Whenever the Firm is providing brokerage services to you, the Firm and its brokers and salespersons (hereinafter Agents) owe you, the customer, the following duties:

- The duty to provide brokerage services to you fairly and honestly.
- The duty to exercise reasonable skill and care in providing brokerage services to you.
- The duty to provide you with accurate information about market conditions within a reasonable time if you request it, unless disclosure of the information is prohibited by law.
- The duty to disclose to you in writing certain Material Adverse Facts about a property, unless disclosure of the information is prohibited by law.
- The duty to protect your confidentiality. Unless the law requires it, the Firm and its Agents will not disclose your confidential information or the confidential information of other parties.
- The duty to safeguard trust funds and other property held by the Firm or its Agents.
- The duty, when negotiating, to present contract proposals in an objective and unbiased manner and disclose the advantages and disadvantages of the proposals.

Please review this information carefully. An Agent of the Firm can answer your questions about brokerage services, but if you need legal advice, tax advice, or a professional home inspection, contact an attorney, tax advisor, or home inspector. This disclosure is required by section 452.135 of the Wisconsin statutes and is for information only. It is a plain-language summary of the duties owed to a customer under section 452.133(1) of the Wisconsin statutes.

Confidentiality Notice to Customers

The Firm and its Agents will keep confidential any information given to the Firm or its Agents in confidence, or any information obtained by the Firm and its Agents that a reasonable person would want to be kept confidential, unless the information must be disclosed by law or you authorize the Firm to disclose particular information. The Firm and its Agents shall continue to keep the information confidential after the Firm is no longer providing brokerage services to you.

No representation is made as to the legal validity of any provision or the adequacy of any provision in any specific transaction.

The following information is required to be disclosed by law:

1. Material Adverse Facts, as defined in section 452.01(5g) of the Wisconsin Statutes (see "Definition of Adverse Facts" below).
2. Any facts known by the Firm or its Agents that contradict any information included in a written inspection report on the property or real estate is the subject of the transaction.

To ensure that the Firm and its Agents are aware of what specific information you consider confidential, you may list that information below or provide that information to the Firm or its Agents by other means. At a later time, you may also provide the Firm or its Agents with other information you consider to be confidential.

CONFIDENTIAL INFORMATION

NON-CONFIDENTIAL INFORMATION

(the following information may be disclosed to the Firm and its Agents)

(Insert information you authorize to be disclosed, such as financial qualification information.)

Definition of Material Adverse Facts

A "Material Adverse Fact" is defined in Wis. Stat. 452.01(5g) as an Adverse Fact that a party indicates is of such significance, or that is generally recognized by a competent licensee as being of such significance to a reasonable party, that it affects or would affect the party's decision to enter into a contract or agreement concerning a transaction or affects or would affect the party's decision about the terms of such a contract or agreement.

An "Adverse Fact" is defined in Wis. Stat. 452.01(1e) as a condition or occurrence that a competent licensee generally recognizes will significantly and adversely affect the value of the property, significantly reduce the structural integrity of improvements to real estate, or present a significant health risk to occupants of the property, or information that indicates that a party to a transaction is not able to or does not intend to meet his or her obligations under a contract or agreement made concerning the transaction.

Notice About Sex Offender Registry

You may obtain information about the sex offender registry and persons registered with the registry by contacting the Wisconsin Department of Corrections on the Internet at <http://www.doc.wi.gov> or by telephone at 608-240-5830.