

# For Sale

1,617 SF AVAILABLE FOR SALE  
260 LOOKOUT PLACE, UNIT 107 • MAITLAND, FL 32751

1,617 SF AVAILABLE

## Lake Faith Office Condo

260 Lookout Place, Unit 107, Maitland, FL 32751



### DESCRIPTION

Professional office condo located within the Lake Faith Professional Center. Ideal for professional office users such as a medical doctor, med spa, attorney, tax office, wealth management, insurance, real estate office & more.

### PROPERTY OVERVIEW

AVAILABLE	1,617 SF
ASKING RATE	\$525,000

### HIGHLIGHTS

- Class A medical office condo located on the corner of Maitland Avenue and Maitland Boulevard adjacent to Lake Faith
- Turn-key medical office including:
  - Reception and waiting area
  - 3 exam rooms
  - 2 offices
  - Break room & Restroom
- One mile from Interstate 4 and US Highway 17-92

FOR MORE INFORMATION, PLEASE CONTACT:

**Rebekah Marrero**  
407.863.2968  
Senior Associate  
Rebekah@AtriumCommercial.com

**JP Beaulieu, CCIM, CLS**  
407.863.2966  
Principal  
JP@AtriumCommercial.com

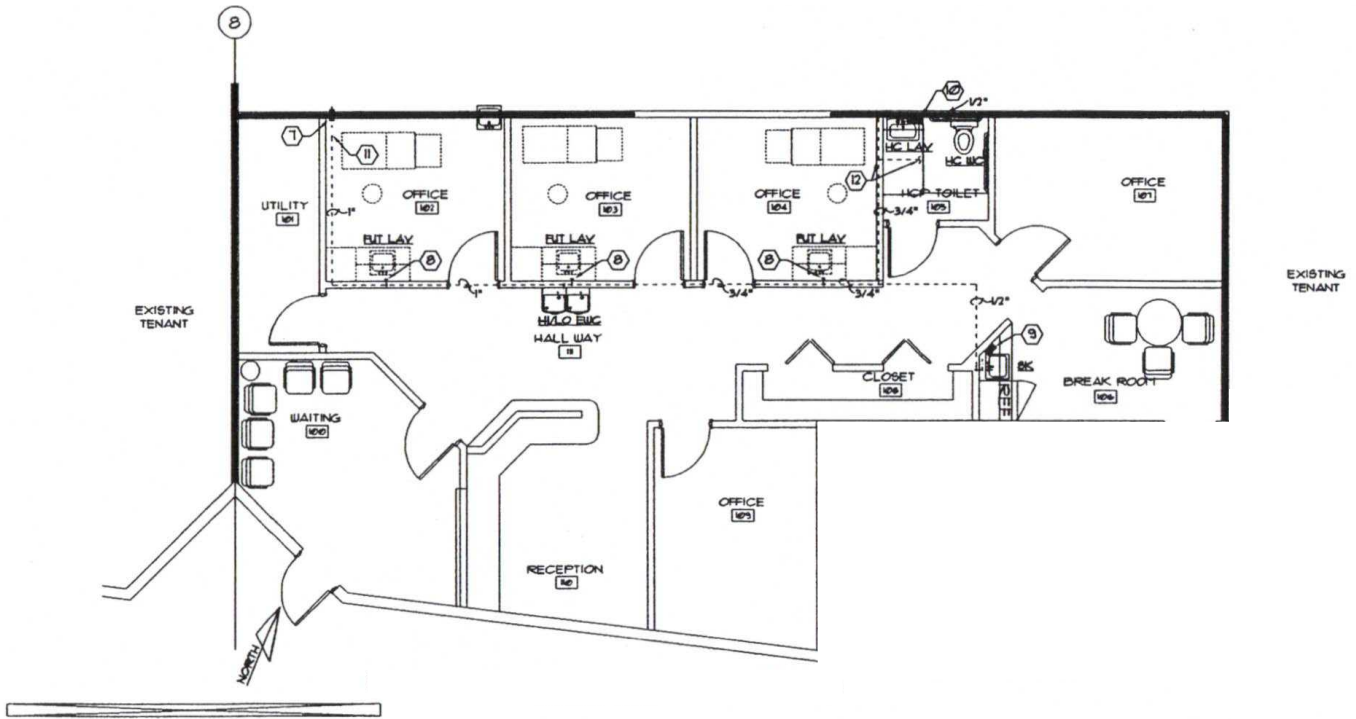
**ATRIUM** | COMMERCIAL  
REAL ESTATE

[ATRIUMCOMMERCIAL.COM](http://ATRIUMCOMMERCIAL.COM)

The information contained herein has been provided by sources believed to be reliable, however Atrium Commercial Real Estate makes no representation, expressed or implied, as to its accuracy and said information is subject to errors, omissions, or changes.



### FLOOR PLAN



FOR MORE INFORMATION, PLEASE CONTACT:

**Rebekah Marrero**  
 407.863.2968  
 Senior Associate  
 Rebekah@AtriumCommercial.com

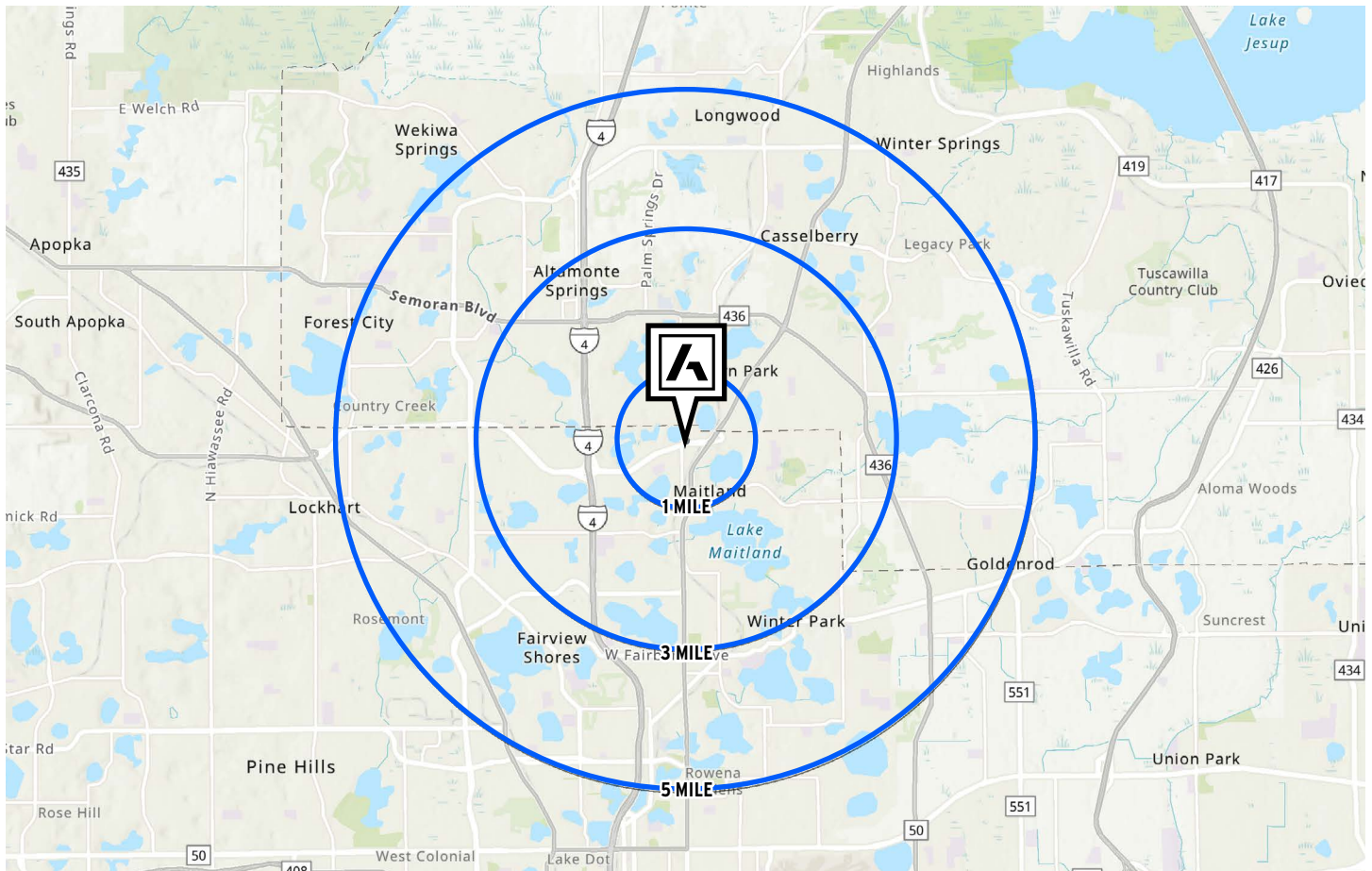
**JP Beaulieu, CCIM, CLS**  
 407.863.2966  
 Principal  
 JP@AtriumCommercial.com

**ATRIUM** | COMMERCIAL  
 REAL ESTATE

[ATRIUMCOMMERCIAL.COM](http://ATRIUMCOMMERCIAL.COM)



### DEMOGRAPHICS



1-MILE



8,936  
ESTIMATED POPULATION



3,949  
HOUSEHOLDS



9,398  
TOTAL EMPLOYEES



151,757  
AVERAGE HOUSEHOLD INCOME

3-MILES



97,581  
ESTIMATED POPULATION



44,225  
HOUSEHOLDS



89,628  
TOTAL EMPLOYEES



\$112,261  
AVERAGE HOUSEHOLD INCOME

5-MILES



269,530  
ESTIMATED POPULATION



115,986  
HOUSEHOLDS



197,832  
TOTAL EMPLOYEES



\$112,528  
AVERAGE HOUSEHOLD INCOME

FOR MORE INFORMATION, PLEASE CONTACT:

**Rebekah Marrero**  
407.863.2968  
Senior Associate  
Rebekah@AtriumCommercial.com

**JP Beaulieu, CCIM, CLS**  
407.863.2966  
Principal  
JP@AtriumCommercial.com



[ATRIUMCOMMERCIAL.COM](http://ATRIUMCOMMERCIAL.COM)