

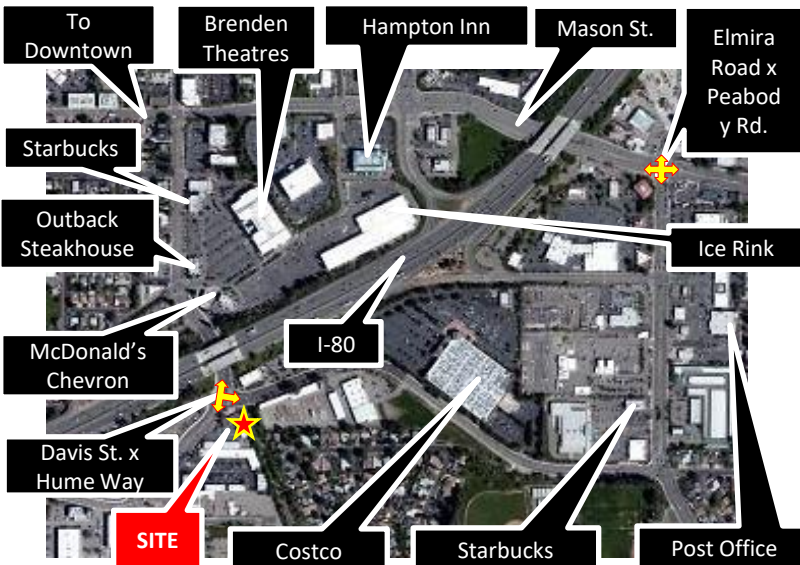


## RARE OFFICE AND WAREHOUSE SPACE



**801 Davis** is a professionally managed, rare light industrial property with small to medium office and warehouse spaces. On-site parking and signage available.

**Subject Property** is located in core Vacaville, close to freeway and public transit. Near downtown, close to shops, dining, and other professional businesses. Property is convenient and efficient for a variety of businesses. No overnight storage in parking lot permitted.



### Property Features

<b>Building Size</b>	12,790sf
<b>Features</b>	<ul style="list-style-type: none"> <li>• Previous Barber shop</li> <li>• Building Signage</li> <li>• Monument Signage</li> <li>• Parking</li> </ul>
<b>Ste E 900sf Office Only</b>	<p>\$2.25/sf/mo mod gross</p> <p>Open floorplan office suite with semi-private office and restroom.</p>

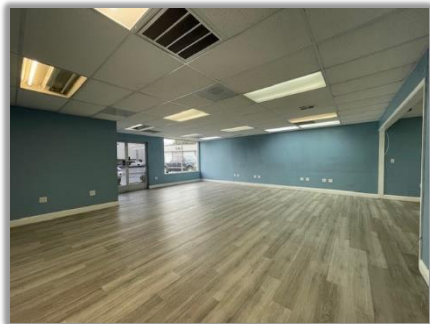
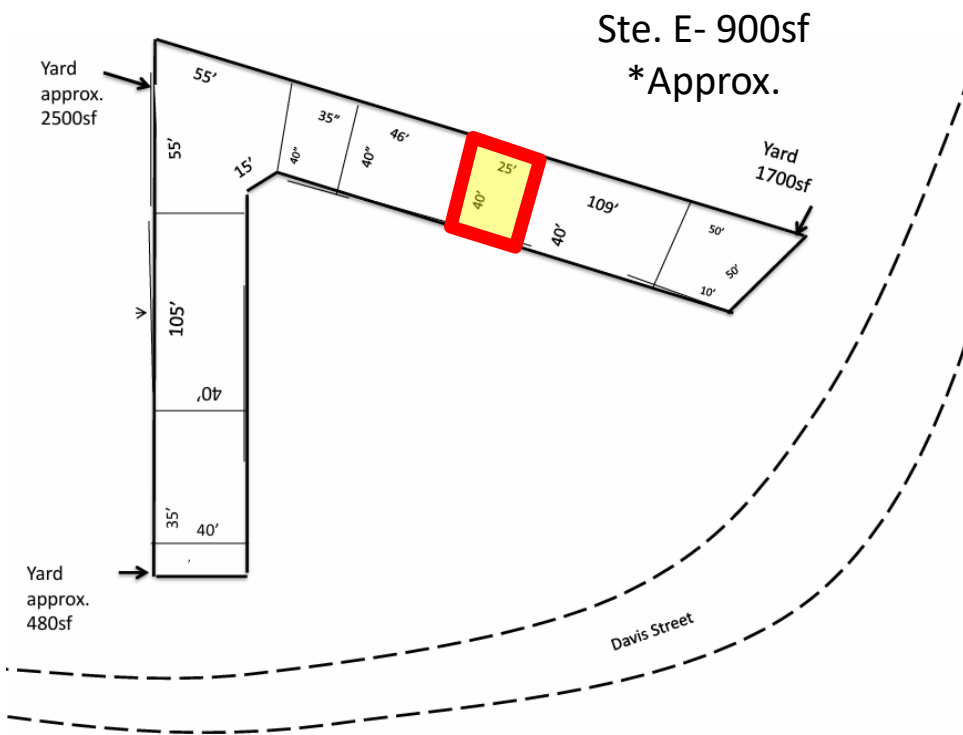
FOR MORE INFORMATION PLEASE CALL 707-469-8000

**Spectrum Properties Commercial Real Estate Services**  
785 Alamo Dr. Ste 170  
Vacaville, CA 95688  
[www.SpectrumPropertiesRE.com](http://www.SpectrumPropertiesRE.com)



OFFERED FOR LEASE BY  
**SPECTRUM PROPERTIES**

801 Davis St.  
Vacaville CA



OFFERED FOR LEASE BY  
**SPECTRUM PROPERTIES**

801 Davis St.  
Vacaville CA

