

# 1NE EI8HTY SE7EN

187 DANBURY ROAD  
WILTON, CONNECTICUT 06897



TIME EQUITIES INC.  
DIVERSIFIED REAL ESTATE INVESTMENT COMPANY ESTABLISHED 1966



BEST IN CLASS  
OFFICE SPACE  
NEW OWNERSHIP  
1,060 - 40,228 SF AVAILABLE

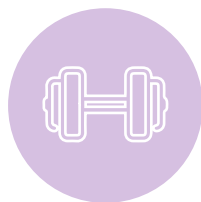
## PROPERTY HIGHLIGHTS



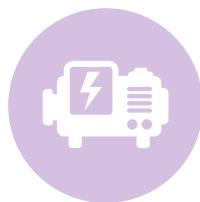
RECENT RENOVATIONS TO LOBBY, BATHROOMS, FITNESS CENTER, & CAFETERIA



FULL-SERVICE CAFETERIA WITH OUTDOOR SEATING AREA



WELL-EQUIPPED FITNESS CENTER WITH LOCKER ROOMS & SHOWERS



FULL POWER GENERATOR BACK-UP FOR ALL TENANTS



AMPLE SURFACE AND COVERED PARKING UP TO 4/1,000



BEAUTIFUL VIEWS OF NORWALK RIVER VALLEY TRAIL



## BUILDING HIGHLIGHTS

- » Turn-key solutions
- » Modern style contemporary finishes throughout
- » Creative deal structures
- » Quality ownership and responsive management
- » Best value in the market



FORMAL DINING CAFE



OUTDOOR DINING



RIVERVIEW LOBBY

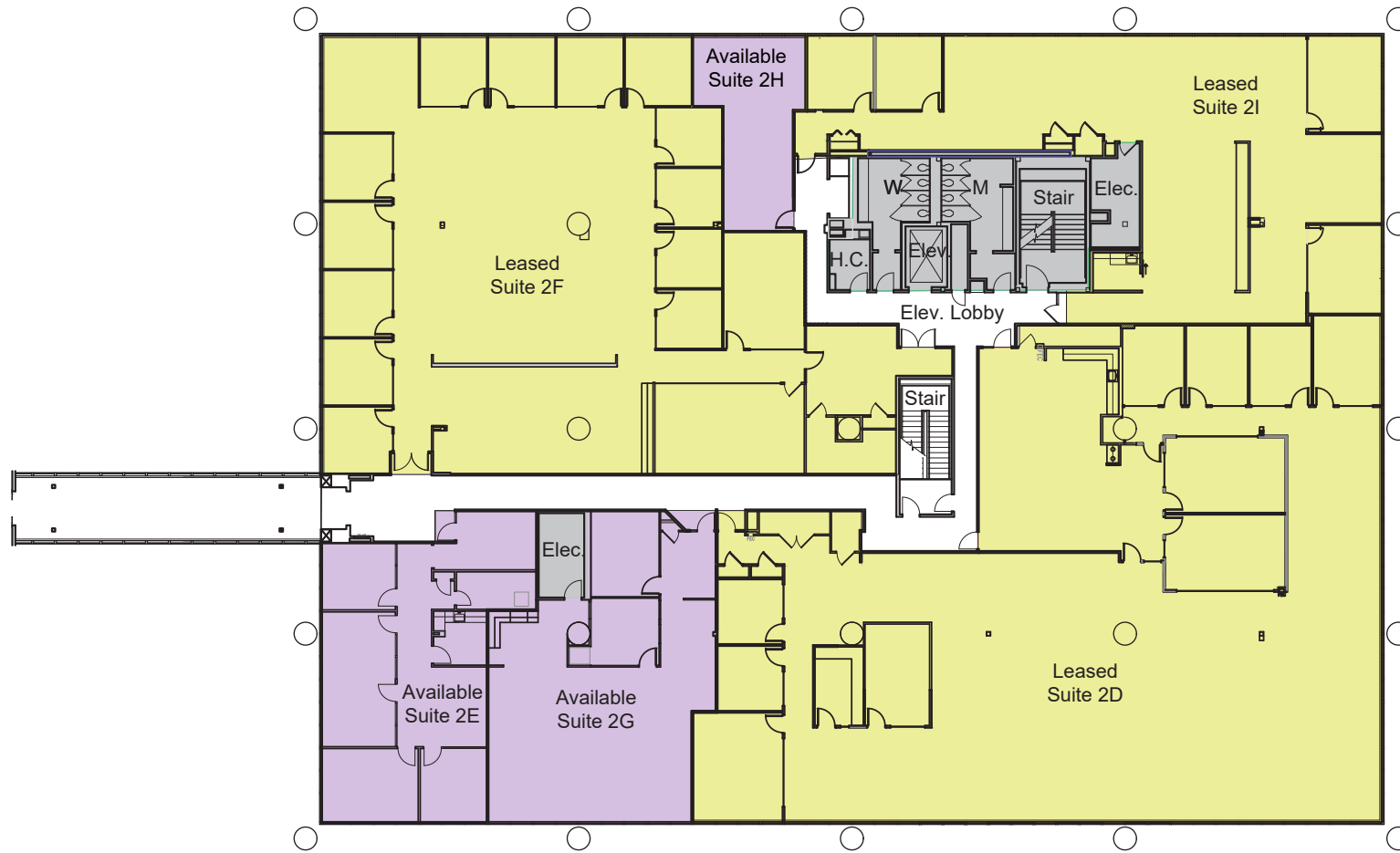
## AVAILABLE SUITES

RIVERSIDE		COURTSIDE	
2	2E	1	1F
	2,162 SF		2,011 SF
	2G		1D
2,543 SF	1,060 SF		
2H	1A		
920 SF	1,560 SF		
3	3A	2	2C
	18,541 SF		16,629 SF
	3B		2B
4,395 SF	5,855 SF		
3C	3A		
2,568 SF	17,744 SF		



# 2

RIVERSIDE / FLOOR 2



2,162 - 30,429 SF AVAILABLE

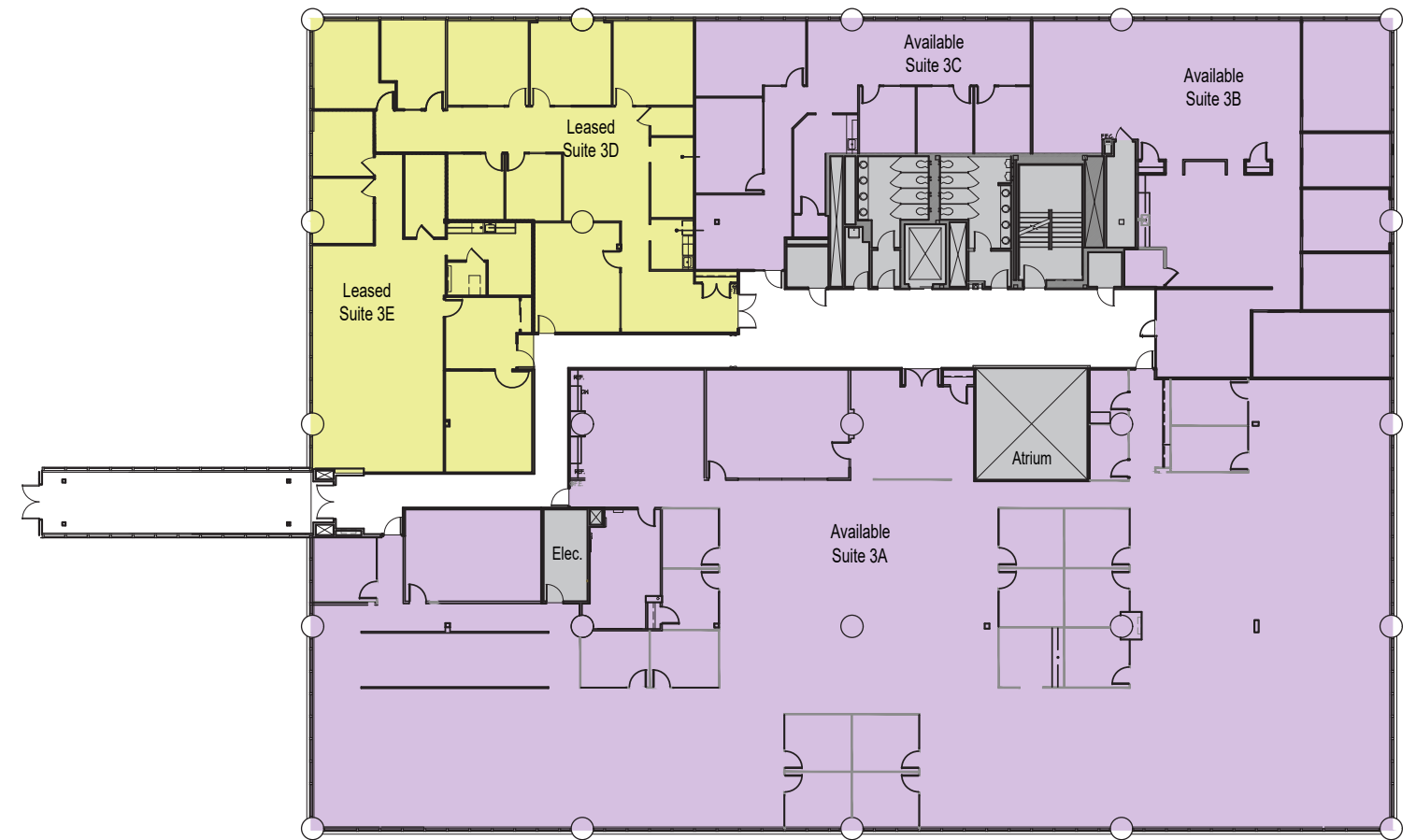
SUITE 2E | 2,162 SF

SUITE 2G | 2,543 SF

SUITE 2H | 920 SF

# 3

RIVERSIDE / FLOOR 3



2,568 - 32,254 SF AVAILABLE

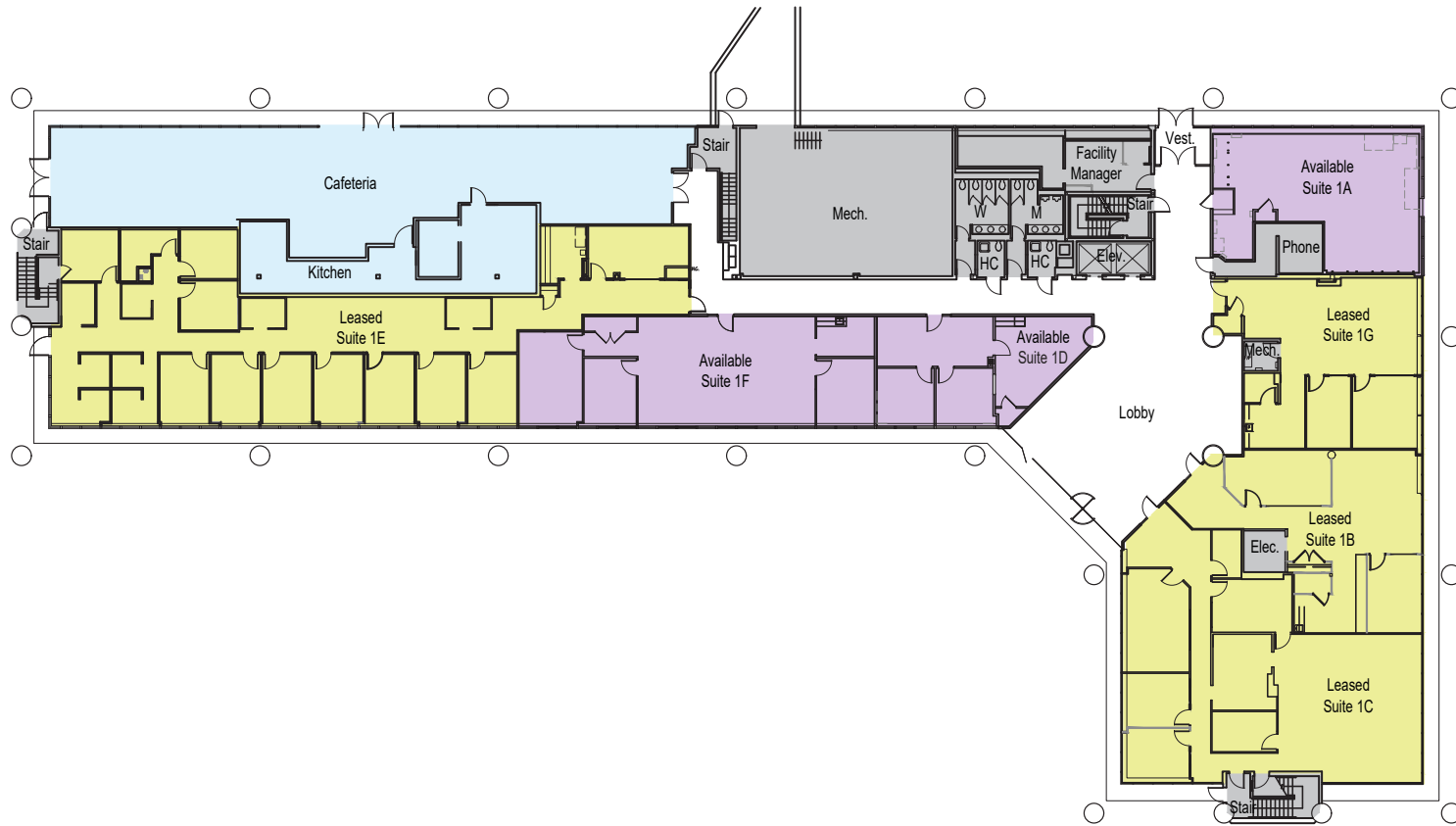
SUITE 3A | 18,541 SF

SUITE 3B | 4,395 SF

SUITE 3C | 2,568 SF

# 1

COURTSIDE / FLOOR 1



1,060 - 15,624 SF AVAILABLE

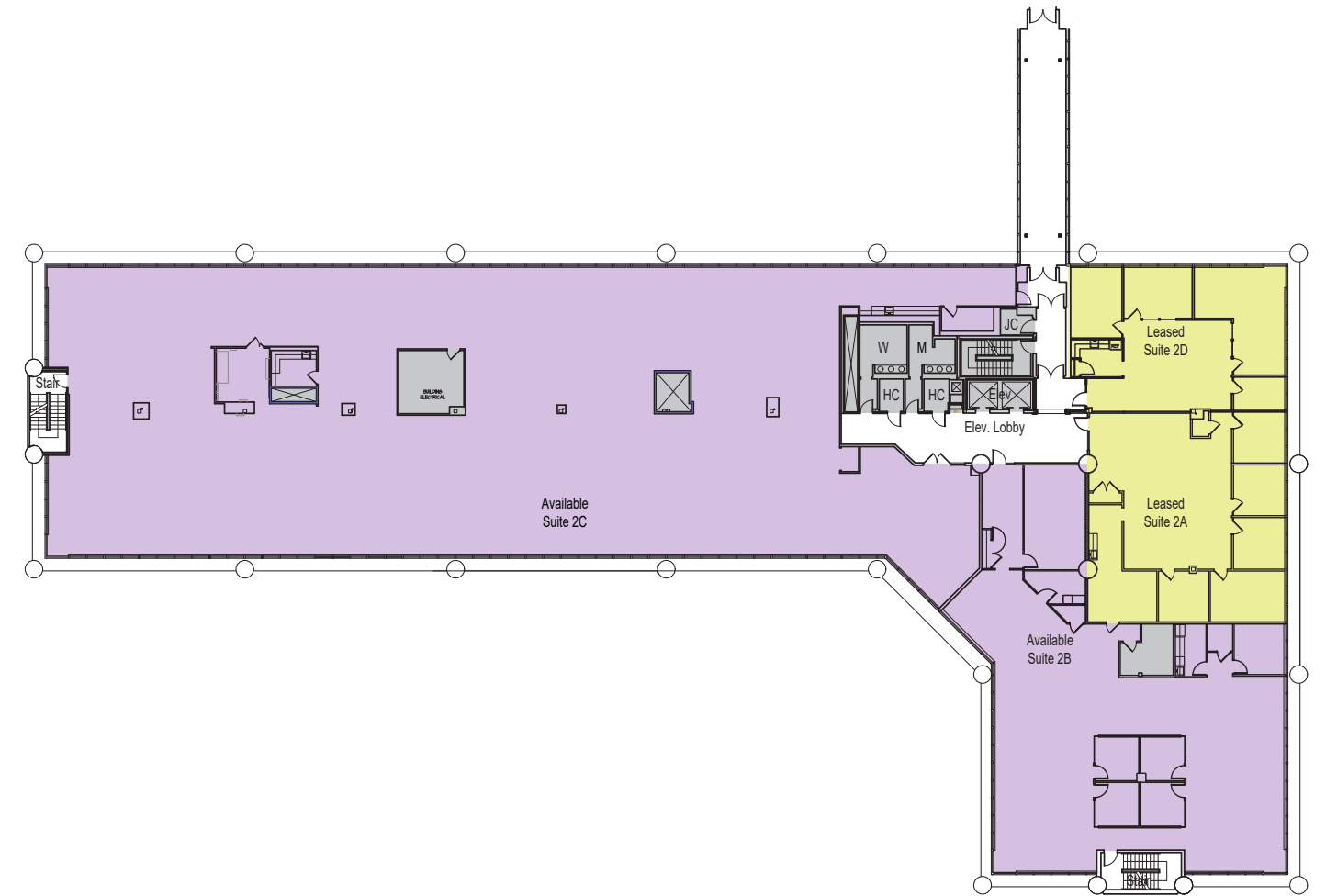
SUITE 1F | 2,011 SF

SUITE 1D | 1,060 SF

SUITE 1A | 1,560 SF

# 2

COURTSIDE / FLOOR 2



2,021 - 27,145 SF AVAILABLE

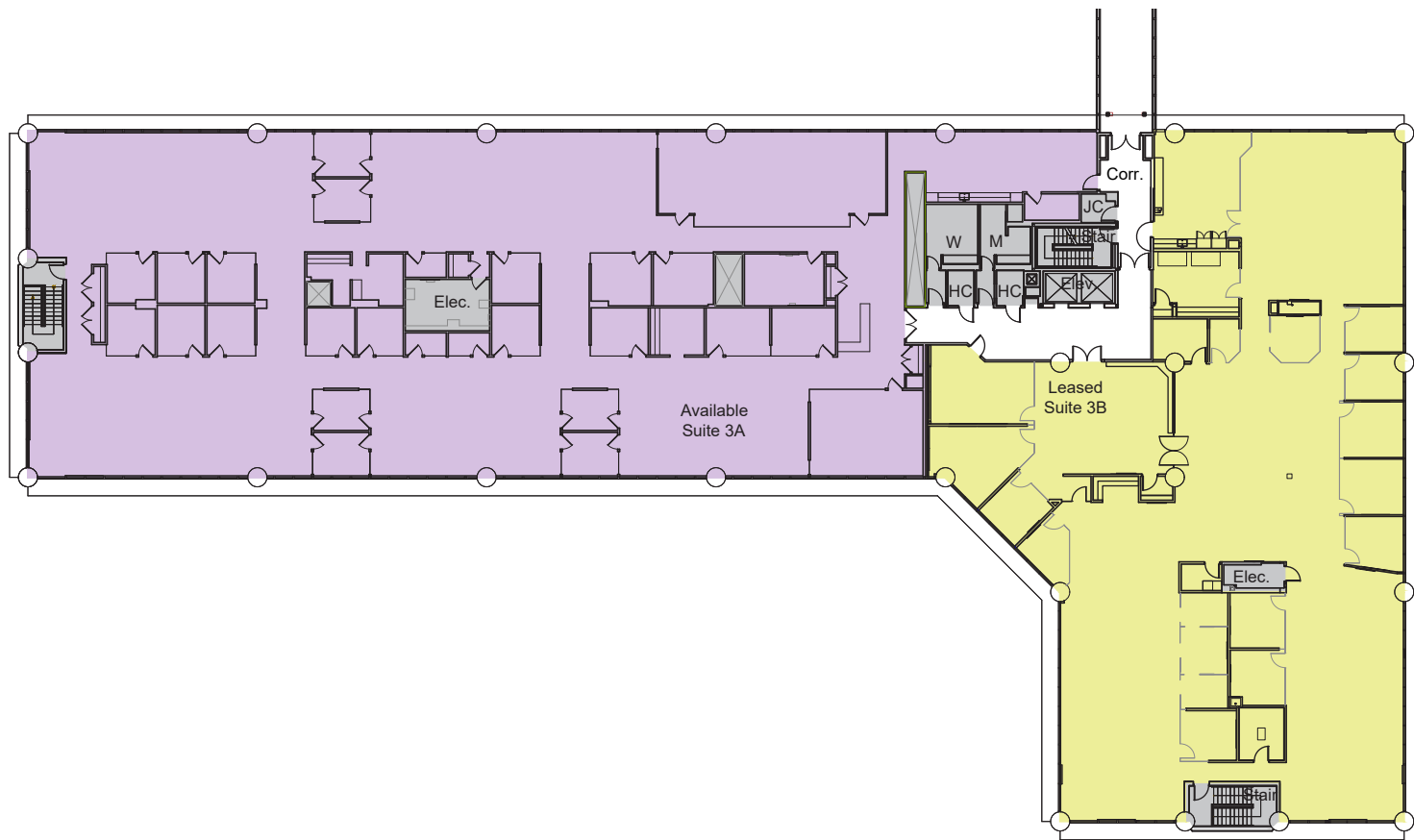
SUITE 2C | 16,629 SF

SUITE 2B | 5,855 SF



# 3

COURTSIDE / FLOOR 3



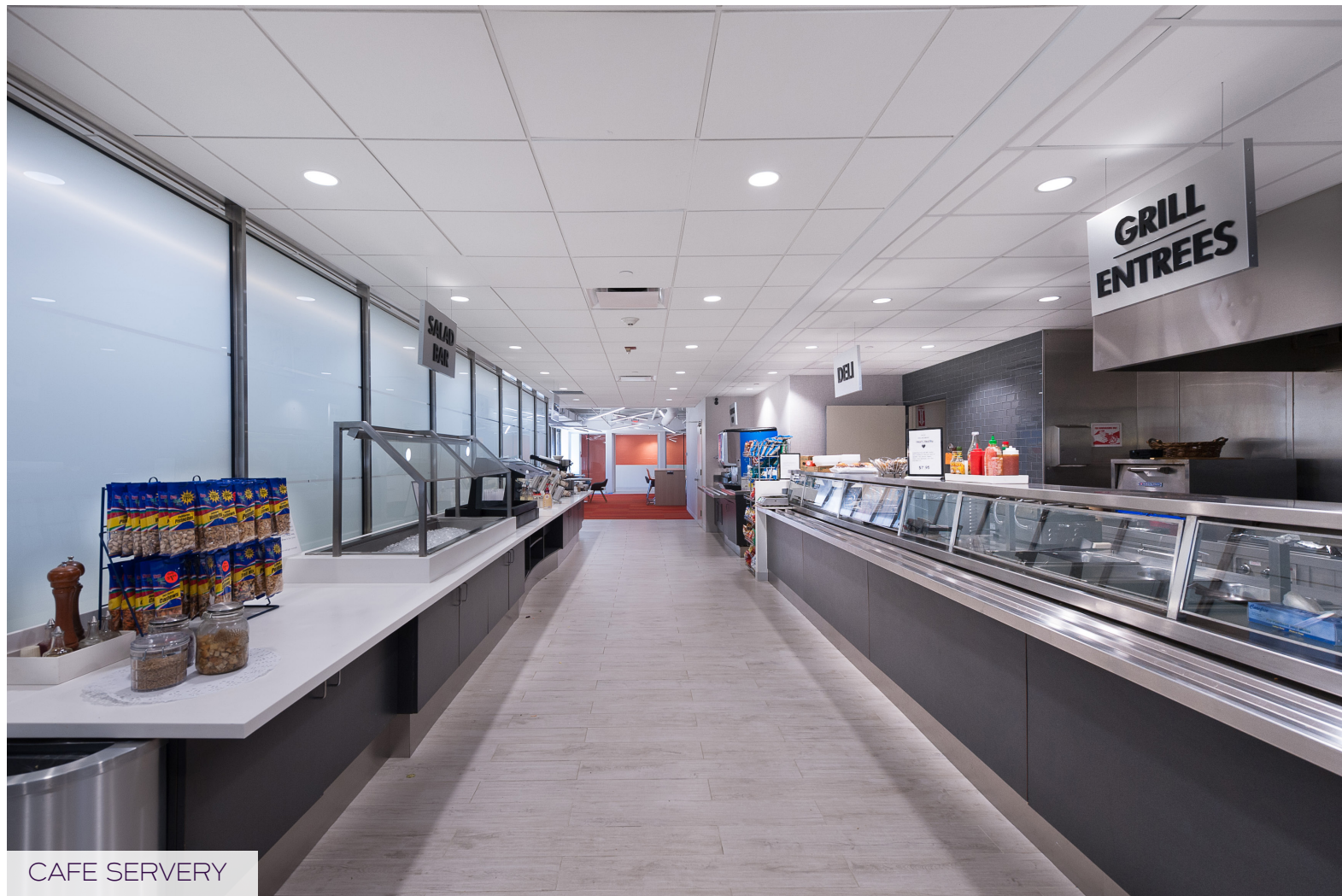
17,744 SF AVAILABLE

SUITE 3A | 17,744 SF





SIRIUS DECISIONS CAFE



CAFE SERVERY



SIRIUS DECISIONS



1NE  
EI8HTY  
SE7EN

187 DANBURY ROAD  
WILTON, CONNECTICUT 06897



TIME EQUITIES INC.  
DIVERSIFIED REAL ESTATE INVESTMENT COMPANY ESTABLISHED 1966



FOR MORE INFORMATION, CONTACT: \_\_\_\_\_

STEVE BAKER  
+ 1 203 326 5818  
steve.baker@cushwake.com

ADAM KLIMEK  
+ 1 203 326 5856  
adam.klimek@cushwake.com

Cushman & Wakefield of Connecticut, Inc.  
Four Stamford Plaza  
107 Elm Street, 8th Floor  
Stamford, CT 06902  
cushmanwakefield.com

©2022 Cushman & Wakefield. All rights reserved. The information contained in this communication is strictly confidential. This information has been obtained from sources believed to be reliable but has not been verified. NO WARRANTY OR REPRESENTATION, EXPRESS OR IMPLIED, IS MADE AS TO THE CONDITION OF THE PROPERTY (OR PROPERTIES) REFERENCED HEREIN OR AS TO THE ACCURACY OR COMPLETENESS OF THE INFORMATION CONTAINED HEREIN, AND SAME IS SUBMITTED SUBJECT TO ERRORS, OMISSIONS, CHANGE OF PRICE, RENTAL OR OTHER CONDITIONS, WITHDRAWAL WITHOUT NOTICE, AND TO ANY SPECIAL LISTING CONDITIONS IMPOSED BY THE PROPERTY OWNER(S). ANY PROJECTIONS, OPINIONS OR ESTIMATES ARE SUBJECT TO UNCERTAINTY AND DO NOT SIGNIFY CURRENT OR FUTURE PROPERTY PERFORMANCE.