

**11543-11545 Olympic Blvd.
2146 S. Colby Ave.**

Los Angeles, California 90064

Property Highlights

- Within close proximity to the 10 & 405 Freeways
- 19 private parking spaces on-site
- Signalized corner
- High traffic count
- Fantastic Synergy
- Great layout

Offering Summary

Lease Rate:	Negotiable
Building Size:	7,685 SF
Available SF:	660 - 7,685 SF
Lot Size:	13,503 SF

For More Information

Sam Kangavari

O: 310 801 0631

skangavari@naicapital.com | CalDRE #01846336

Joshua Shadpour

Shadpour Brokerage

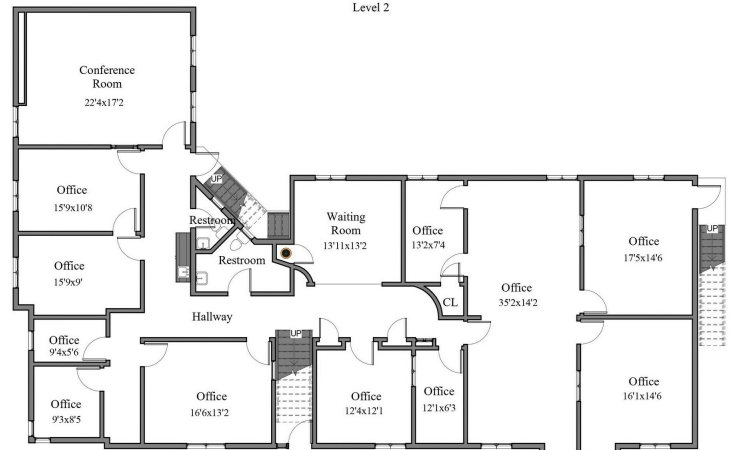
O: 310 228 7300

josh@shadpour.com | CalDRE #01467689

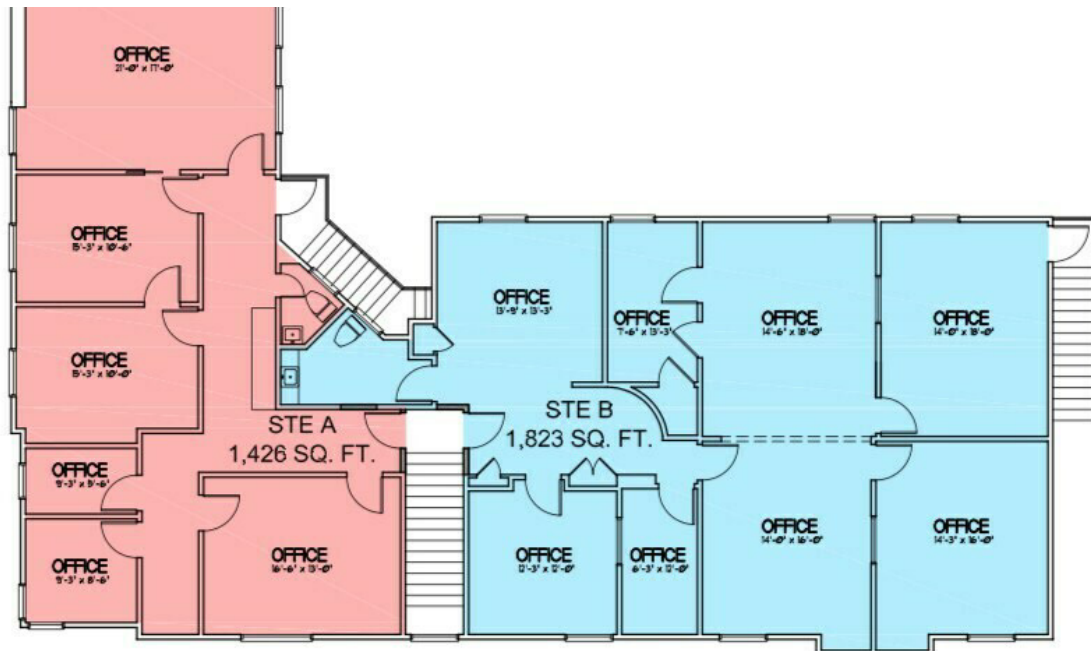
For Lease

660 - 7,685 SF | Negotiable
Retail Space

11543 West Olympic Blvd | Los Angeles, CA 90064



All measurements are approximate and not guaranteed. This illustration is provided for marketing and convenience only. All information should be verified independently. Floorplan.com



P.O. Box 800315
SANTA CLARITA, CA 91360

DRAWING TITLE
11545 OLMPIC BLVD
LOS ANGELES, CA

DATE
2023FEB11
PROJECT NUMBER
D230211

For Lease

660 - 7,685 SF | Negotiable
Retail Space

