

Property For Lease

# 7 North Station Plaza

7 North Station Plaza Great Neck, NY 11021



For More Information:

**Rozita Soomekh- Results Powered by Rozita**

Licensed Associate Real Estate Broker  
Douglas Elliman Commercial - Long Island  
516.498.2152  
rozita.soomekh@elliman.com



[WWW.ELLIMANCOMMERCIAL.COM](http://WWW.ELLIMANCOMMERCIAL.COM)

THE PROPERTY CONTAINED WITHIN THIS DOCUMENT IS BEING EXCLUSIVELY REPRESENTED BY DOUGLAS ELLIMAN REAL ESTATE COMMERCIAL DIVISION, 650 SMITHTOWN BYPASS STE. 117 SMITHTOWN, NY 11787 631 868-2405 © 2023 DOUGLAS ELLIMAN COMMERCIAL OF LI, LLC. ALL MATERIAL PRESENTED HEREIN IS INTENDED FOR INFORMATION PURPOSES ONLY. WHILE THIS INFORMATION IS BELIEVED TO BE CORRECT, IT IS REPRESENTED SUBJECT TO ERRORS, OMISSIONS, CHANGES OR WITHDRAWAL WITHOUT NOTICE. ALL PROPERTY INFORMATION, INCLUDING, BUT NOT LIMITED TO SQUARE FOOTAGE, ROOM COUNT, ZONING IN THE LISTING SHOULD BE VERIFIED BY YOUR OWN ATTORNEY, ARCHITECT OR ZONING EXPERT. IF YOUR PROPERTY IS CURRENTLY LISTED WITH ANOTHER REAL ESTATE BROKER, PLEASE DISREGARD THIS OFFER. IT IS NOT OUR INTENTION TO SOLICIT THE OFFERINGS OF OTHER REAL ESTATE BROKERS. WE COOPERATE WITH THEM FULLY. EQUAL HOUSING OPPORTUNITY.



# Office Property For Lease

## 7 North Station Plaza Great Neck, NY 11021



Offering Summary	
Lease Rate:	\$4,000.00 per month (MG)
Building Size:	38,514 SF
Available SF:	890 SF + Basement

### Property Overview

Prime Retail Space for Lease in Great Neck:

- High Visibility: Prominent street-front location for excellent exposure
- High Foot Traffic: Steady flow of pedestrians drives potential customers
- Central Location: In the heart of Great Neck, close to local amenities
- Convenient Transit: 3-minute walk to Great Neck LIRR station
- High Exposed Ceiling: Modern, stylish look

Located in the vibrant heart of Great Neck Plaza, this spacious 890 square foot commercial property offers a unique opportunity for any type of business. The space features beautiful wood floors, modern exposed lighting, and a back door providing a convenient second exit. With ample exposure and high visibility, this property is ideally situated directly across from the LIRR, ensuring excellent foot traffic and accessibility for your customers. The property also includes a basement, offering extra storage or workspace.

For More Information:

**Rozita Soomekh- Results Powered by Rozita**

Licensed Associate Real Estate Broker  
 Douglas Elliman Commercial - Long Island  
 516.498.2152  
 rozita.soomekh@elliman.com



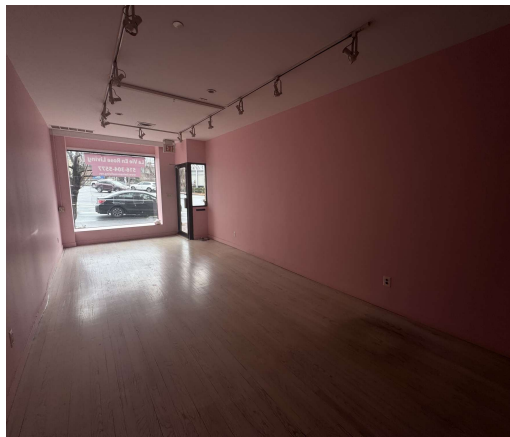
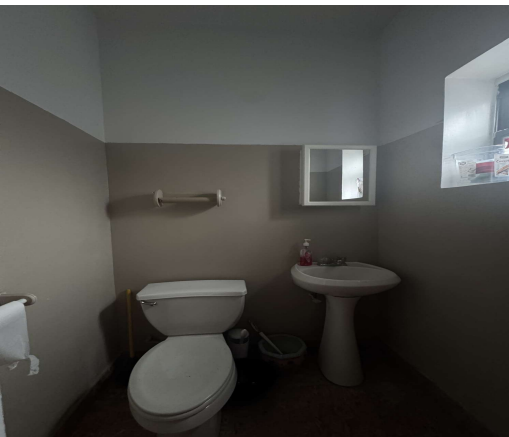
[WWW.ELLIMANCOMMERCIAL.COM](http://WWW.ELLIMANCOMMERCIAL.COM)

THE PROPERTY CONTAINED WITHIN THIS DOCUMENT IS BEING EXCLUSIVELY REPRESENTED BY DOUGLAS ELLIMAN REAL ESTATE COMMERCIAL DIVISION, 550 SMITHTOWN BYPASS STE. 117 SMITHTOWN, NY 11787 631.858.2405 © 2023 DOUGLAS ELLIMAN COMMERCIAL OF LI, LLC. ALL MATERIAL PRESENTED HEREIN IS INTENDED FOR INFORMATION PURPOSES ONLY. WHILE THIS INFORMATION IS BELIEVED TO BE CORRECT, IT IS REPRESENTED SUBJECT TO ERRORS, OMISSIONS, CHANGES OR WITHDRAWAL WITHOUT NOTICE. ALL PROPERTY INFORMATION, INCLUDING, BUT NOT LIMITED TO SQUARE FOOTAGE, ROOM COUNT, ZONING IN THE LISTING SHOULD BE VERIFIED BY YOUR OWN ATTORNEY, ARCHITECT OR ZONING EXPERT. IF YOUR PROPERTY IS CURRENTLY LISTED WITH ANOTHER REAL ESTATE BROKER, PLEASE DISREGARD THIS OFFER. IT IS NOT OUR INTENTION TO SOLICIT THE OFFERINGS OF OTHER REAL ESTATE BROKERS. WE COOPERATE WITH THEM FULLY. EQUAL HOUSING OPPORTUNITY.



# Office Property For Lease

## 7 North Station Plaza Great Neck, NY 11021



For More Information:

**Rozita Soomekh- Results Powered by Rozita**

Licensed Associate Real Estate Broker  
Douglas Elliman Commercial - Long Island  
516.498.2152  
rozita.soomekh@elliman.com



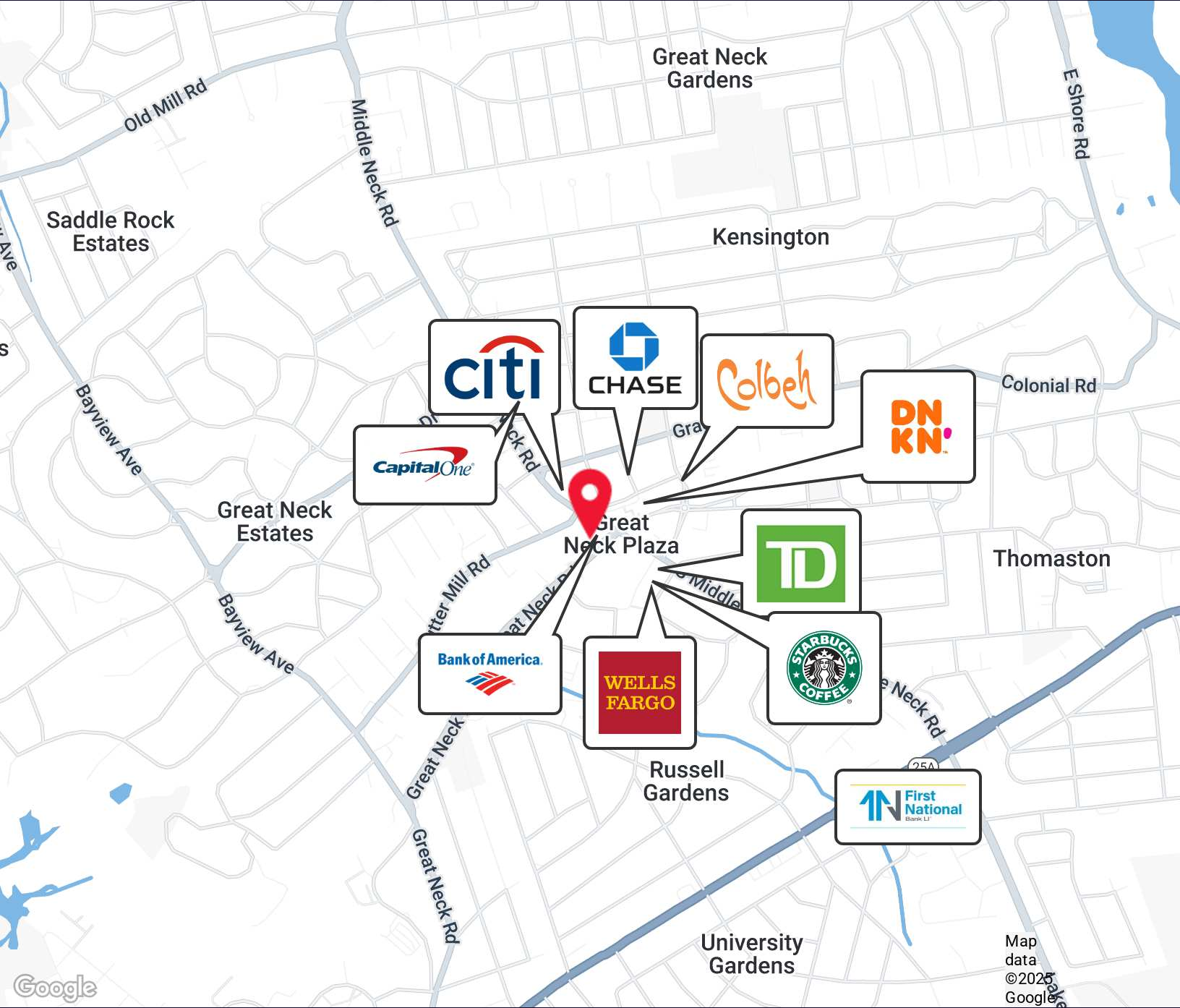
[WWW.ELLIMANCOMMERCIAL.COM](http://WWW.ELLIMANCOMMERCIAL.COM)

THE PROPERTY CONTAINED WITHIN THIS DOCUMENT IS BEING EXCLUSIVELY REPRESENTED BY DOUGLAS ELLIMAN REAL ESTATE COMMERCIAL DIVISION, 550 SMITHTOWN BYPASS STE. 117 SMITH-TOWN, NY 11787 631.858.2405 © 2023 DOUGLAS ELLIMAN COMMERCIAL OF LI, LLC. ALL MATERIAL PRESENTED HEREIN IS INTENDED FOR INFORMATION PURPOSES ONLY. WHILE THIS INFORMATION IS BELIEVED TO BE CORRECT, IT IS REPRESENTED SUBJECT TO ERRORS, OMISSIONS, CHANGES OR WITHDRAWAL WITHOUT NOTICE. ALL PROPERTY INFORMATION, INCLUDING, BUT NOT LIMITED TO SQUARE FOOTAGE, ROOM COUNT, ZONING IN THE LISTING SHOULD BE VERIFIED BY YOUR OWN ATTORNEY, ARCHITECT OR ZONING EXPERT. IF YOUR PROPERTY IS CURRENTLY LISTED WITH ANOTHER REAL ESTATE BROKER, PLEASE DISREGARD THIS OFFER. IT IS NOT OUR INTENTION TO SOLICIT THE OFFERINGS OF OTHER REAL ESTATE BROKERS. WE COOPERATE WITH THEM FULLY. EQUAL HOUSING OPPORTUNITY.



# Office Property For Lease

## 7 North Station Plaza Great Neck, NY 11021



For More Information:

**Rozita Soomekh- Results Powered by Rozita**

Licensed Associate Real Estate Broker  
Douglas Elliman Commercial - Long Island  
516.498.2152  
rozita.soomekh@elliman.com



[WWW.ELLIMANCOMMERCIAL.COM](http://WWW.ELLIMANCOMMERCIAL.COM)

THE PROPERTY CONTAINED WITHIN THIS DOCUMENT IS BEING EXCLUSIVELY REPRESENTED BY DOUGLAS ELLIMAN REAL ESTATE COMMERCIAL DIVISION, 550 SMITHTOWN BYPASS STE. 117 SMITHTOWN, NY 11787 631.858.2405 © 2023 DOUGLAS ELLIMAN COMMERCIAL OF LI, L.L.C. ALL MATERIAL PRESENTED HEREIN IS INTENDED FOR INFORMATION PURPOSES ONLY. WHILE THIS INFORMATION IS BELIEVED TO BE CORRECT, IT IS REPRESENTED SUBJECT TO ERRORS, OMISSIONS, CHANGES OR WITHDRAWAL WITHOUT NOTICE. ALL PROPERTY INFORMATION, INCLUDING, BUT NOT LIMITED TO SQUARE FOOTAGE, ROOM COUNT, ZONING IN THE LISTING SHOULD BE VERIFIED BY YOUR OWN ATTORNEY, ARCHITECT OR ZONING EXPERT. IF YOUR PROPERTY IS CURRENTLY LISTED WITH ANOTHER REAL ESTATE BROKER, PLEASE DISREGARD THIS OFFER. IT IS NOT OUR INTENTION TO SOLICIT THE OFFERINGS OF OTHER REAL ESTATE BROKERS. WE COOPERATE WITH THEM FULLY. EQUAL HOUSING OPPORTUNITY.



# Office Property For Lease

## 7 North Station Plaza Great Neck, NY 11021



### Rozita Soomekh- Results Powered By Rozita

Licensed Associate Real Estate Broker

rozita.soomekh@elliman.com

Direct: 516.498.2152 | Cell: 516.205.2279

### Professional Background

Rozita Soomekh

Top Commercial Real Estate Agent | Douglas Elliman

With over two decades of success in the real estate industry, Rozita Soomekh has built a reputation as one of the leading commercial real estate professionals in New York. Since 2000, Rozita has been providing exceptional service to a diverse range of clients, including individual investors, developers, large franchises, and well-established businesses.

Clients choose to work with Rozita for her comprehensive, full-service approach, integrity, extensive market knowledge, and tireless work ethic. Whether her clients are buying, selling, or investing in real estate, Rozita consistently delivers results that exceed expectations.

Her success is driven by a loyal base of repeat clients, many of whom are prominent developers and business leaders. Rozita has successfully marketed and sold commercial and residential properties across the five boroughs of New York, including Nassau, Queens, the Bronx, Manhattan, Brooklyn, and Suffolk.

In late 2018, Rozita expanded her business by forming The Rozita Soomekh Team, enabling her to better meet the growing demands of her clientele. Under her leadership, the team has excelled in closing high-value transactions and building long-term client relationships. Rozita's commitment to staying ahead of market trends and her dedication to providing clients with the best marketing strategies and negotiation tactics have earned her multiple awards and industry recognition.

At Douglas Elliman, Rozita is able to leverage the firm's vast resources and marketing capabilities to ensure her clients receive the highest level of service and the best possible outcomes. With a proven track record of success and a commitment to excellence, Rozita Soomekh continues to be a trusted name in commercial real estate.

#### Douglas Elliman Commercial - Long Island

550 Smithtown Bypass Suite 117

Smithtown, NY 11787

631.858.2405

For More Information:

### Rozita Soomekh- Results Powered by Rozita

Licensed Associate Real Estate Broker

Douglas Elliman Commercial - Long Island

516.498.2152

rozita.soomekh@elliman.com



WWW.ELLIMANCOMMERCIAL.COM

THE PROPERTY CONTAINED WITHIN THIS DOCUMENT IS BEING EXCLUSIVELY REPRESENTED BY DOUGLAS ELLIMAN REAL ESTATE COMMERCIAL DIVISION, 550 SMITHTOWN BYPASS STE. 117 SMITHTOWN, NY 11787 631.858.2405 © 2023 DOUGLAS ELLIMAN COMMERCIAL OF LI, LLC. ALL MATERIAL PRESENTED HEREIN IS INTENDED FOR INFORMATION PURPOSES ONLY. WHILE THIS INFORMATION IS BELIEVED TO BE CORRECT, IT IS REPRESENTED SUBJECT TO ERRORS, OMISSIONS, CHANGES OR WITHDRAWAL WITHOUT NOTICE. ALL PROPERTY INFORMATION, INCLUDING, BUT NOT LIMITED TO SQUARE FOOTAGE, ROOM COUNT, ZONING IN THE LISTING SHOULD BE VERIFIED BY YOUR OWN ATTORNEY, ARCHITECT OR ZONING EXPERT. IF YOUR PROPERTY IS CURRENTLY LISTED WITH ANOTHER REAL ESTATE BROKER, PLEASE DISREGARD THIS OFFER. IT IS NOT OUR INTENTION TO SOLICIT THE OFFERINGS OF OTHER REAL ESTATE BROKERS. WE COOPERATE WITH THEM FULLY. EQUAL HOUSING OPPORTUNITY.

## WE ARE COMMERCIAL REAL ESTATE

Commercial real estate involves more than just property listings. To get the most effective results, you need to partner with a company that has a full complement of services and an in-depth team of professionals to help with all of your needs. Douglas Elliman's team of commercial real estate experts is committed to unrivaled performance standards when working with tenants, investors, purchasers and owners. We represent all major property types including office, industrial, retail, apartment and land. We treat each assignment with commitment and focus, from a single transaction in a local market to national and multi-market assignments. We help negotiate contracts, coordinate construction and provide both property management as well as ongoing advisory service to satisfy your changing real estate needs. Our breadth of market knowledge, unprecedented network and use of innovative technology extend to all types of property transactions.

For More Information:

**Rozita Soomekh- Results Powered by Rozita**

Licensed Associate Real Estate Broker

516.498.2152

[rozita.soomekh@elliman.com](mailto:rozita.soomekh@elliman.com)

Office: 631.858.2405

Fax: 631.543.0851

550 Smithtown Bypass

Smithtown, NY 11787