



GENESEE
COMMERCIAL
GROUP, LLC

FOR LEASE

OFFICE

3082 EVERGREEN PARKWAY

Evergreen, Colorado 80439



PROPERTY FEATURES

- Great North Evergreen location
- Easy access to I-70
- Excellent visibility from Evergreen Parkway
- Beautifully landscaped
- Gorgeous views
- First floor suite

BUILDING SPECIFICATIONS

Available:	Suite C - 1,553 RSF
Lease Rate:	\$19.50/RSF MG
Building Size:	8,293 SF
Year Built:	1993
Stories:	2
Elevator:	1

FOR MORE INFORMATION CONTACT:

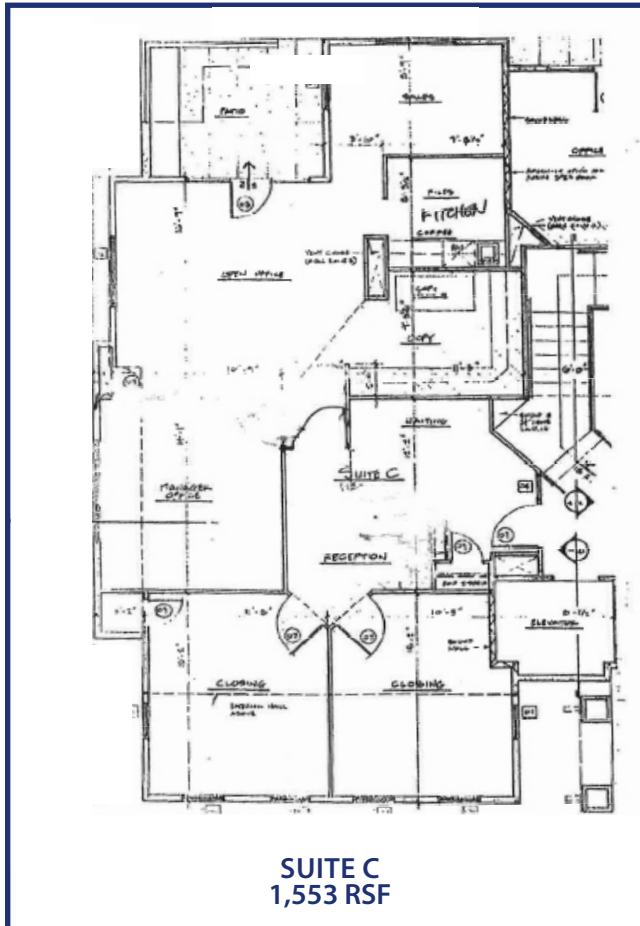
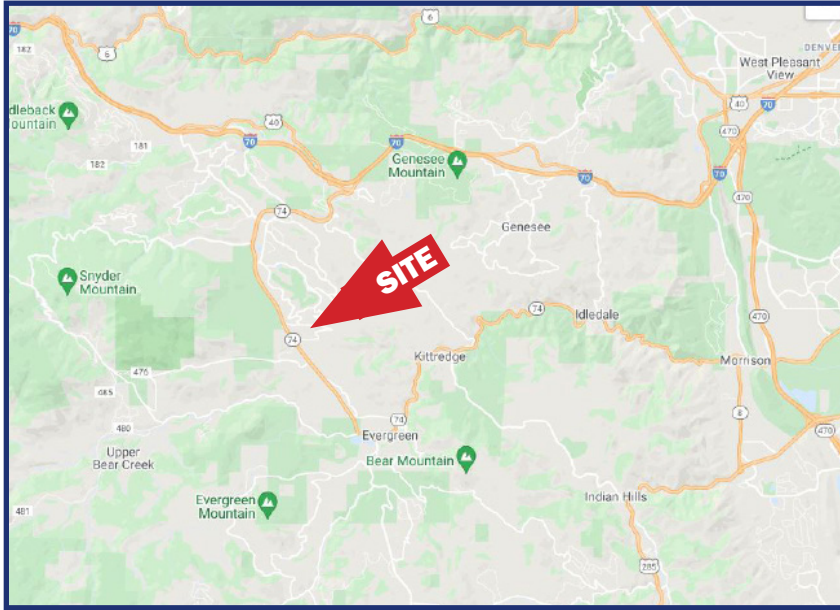
JAMIE MACBETH
jmacbeth@gcgcre.com | 720.476.5229

RENÉE SPICER
rspicer@gcgcre.com | 720.476.5226



3082 EVERGREEN PARKWAY

Evergreen, Colorado 80439



FOR MORE INFORMATION CONTACT:

JAMIE MACBETH
jmacbeth@gcgcre.com | 720.476.5229

RENÉE SPICER
rspicer@gcgcre.com | 720.476.5226

GENESEE COMMERCIAL GROUP, LLC | 710 KIPLING STREET, SUITE 403 | LAKEWOOD, COLORADO 80215 | WWW.GCGCRE.COM

No warranty or representation is made as to the accuracy of the foregoing information. Terms of sale or lease and availability are subject to change or withdrawal without notice.