

33760 FORD ROAD
WESTLAND, MICHIGAN

RETAIL/OFFICE FOR LEASE
450 Square Feet Available



**SIGNATURE
ASSOCIATES**
KNOW SIGNATURE | KNOW RESULTS



PROPERTY FEATURES

- 450 square feet available
- Recently updated retail/office building for lease on well-travel Ford Road
- Join many national retailers and receive high exposure to very densely populated area
- Lease Rate: \$1,000/month NNN



For more information, please contact:

JUSTIN GAFFREY
(248) 799 3143
jgaffrey@signatureassociates.com

SIGNATURE ASSOCIATES
One Towne Square, Suite 1200
Southfield, MI 48076
www.signatureassociates.com

33760 Ford Road – Westland, Michigan

Retail/Office For Lease

450
Square Feet
AVAILABLE

Interior
Photos



For more information, please contact:

JUSTIN GAFFREY
(248) 799 3143
jgaffrey@signatureassociates.com

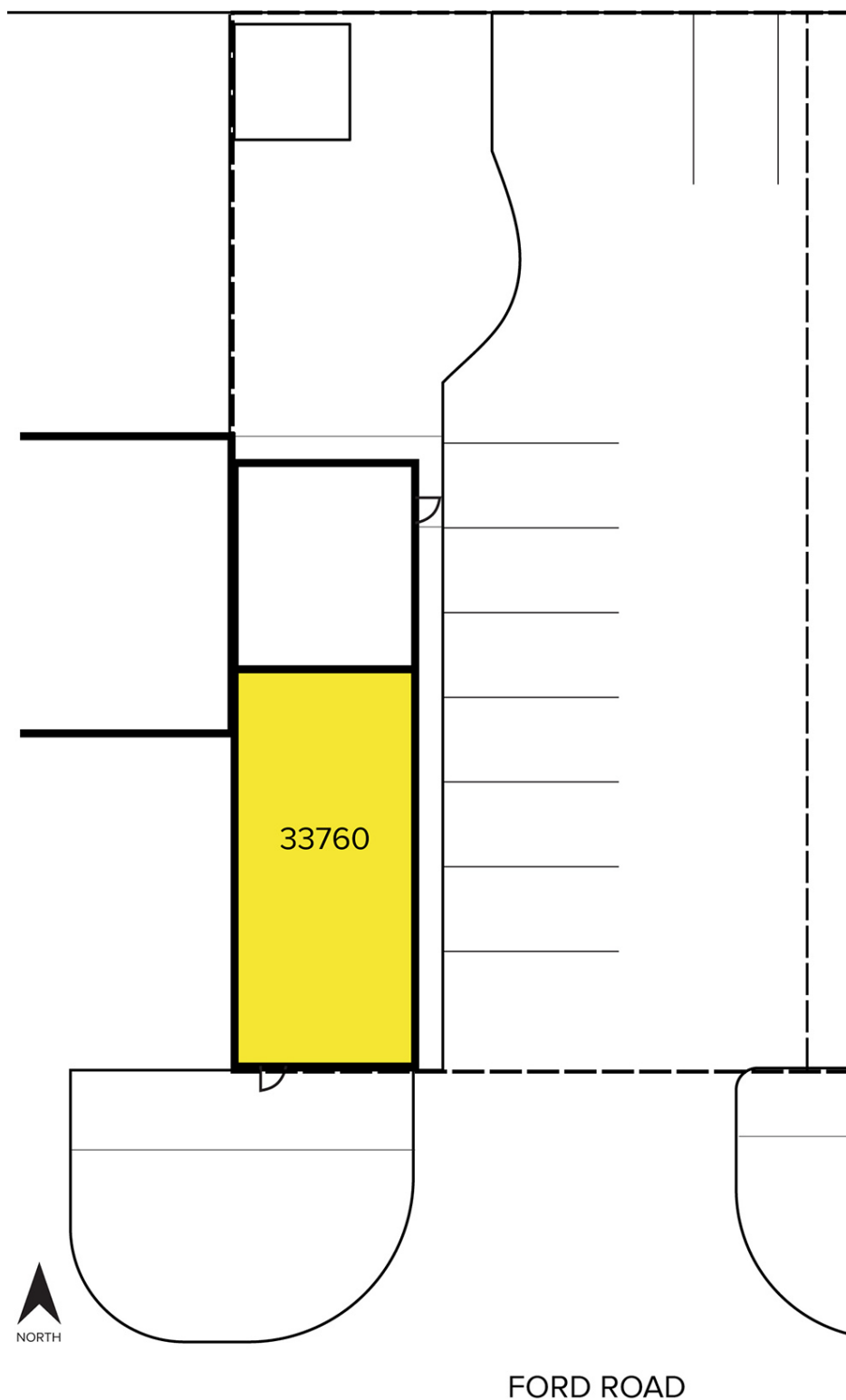
SIGNATURE ASSOCIATES
One Towne Square, Suite 1200
Southfield, MI 48076
www.signatureassociates.com

33760 Ford Road – Westland, Michigan

Retail/Office For Lease

450
Square Feet
AVAILABLE

Site Plan



For more information, please contact:

JUSTIN GAFFREY

(248) 799 3143

jgaffrey@signatureassociates.com

SIGNATURE ASSOCIATES

One Towne Square, Suite 1200

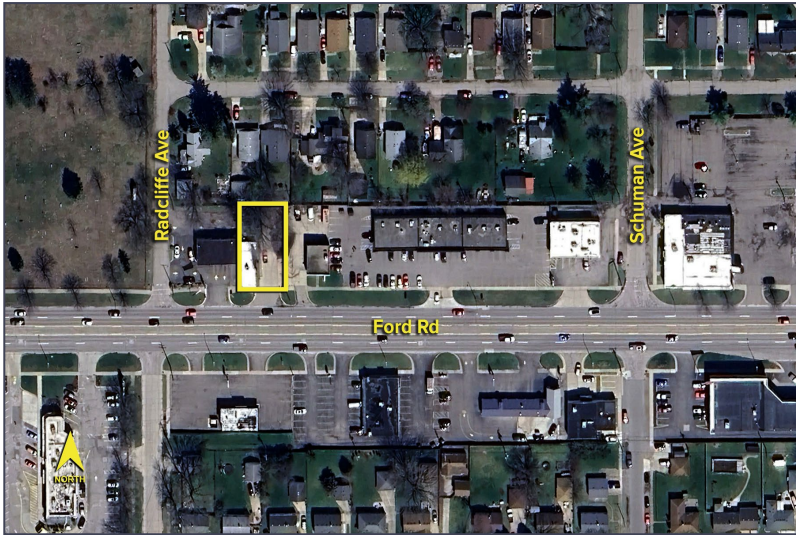
Southfield, MI 48076

www.signatureassociates.com

33760 Ford Road – Westland, Michigan

Retail/Office For Lease

450
Square Feet
AVAILABLE

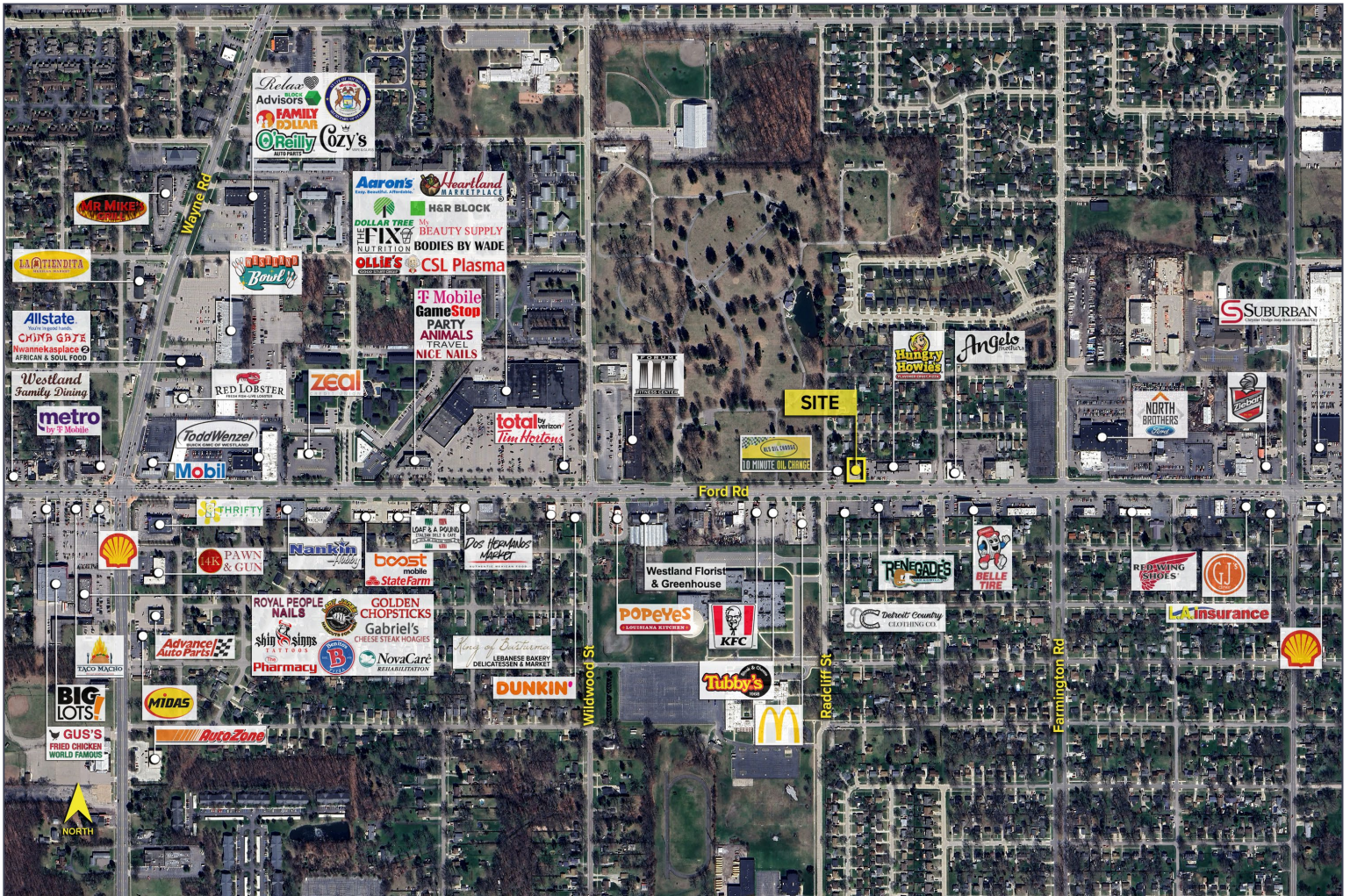


DEMOGRAPHICS

	POPULATION	MED. HH INCOME
1 MILE	12,456	\$62,569
3 MILE	114,818	\$66,020
5 MILE	266,468	\$71,692

TRAFFIC COUNTS (TWO-WAY)

41,421	Ford Rd. E of Wildwood St.
41,230	Ford Rd. W of Wildwood St.
6,454	Wildwood St. N of Ford Rd.
6,300	Wildwood St. S of Ford Rd.



For more information, please contact:

JUSTIN GAFFREY
(248) 799 3143
jgaffrey@signatureassociates.com

SIGNATURE ASSOCIATES
One Towne Square, Suite 1200
Southfield, MI 48076
www.signatureassociates.com