

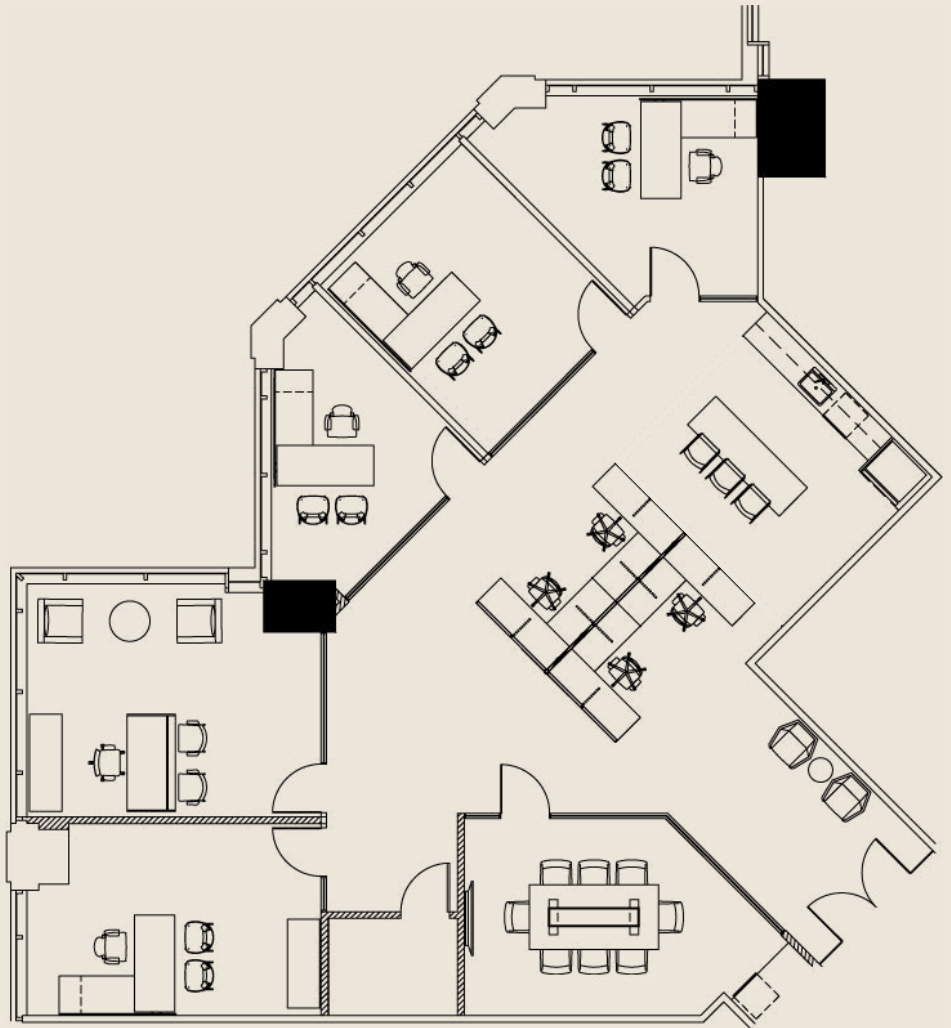
Suite 1600
2,889 SF

Lease Expiration
07/31/2028

Sublease Space
2,889 SF

Features

- Downtown Office
- Modern Build & Finishes
- Double Door Entry
- 16th Floor, Las Olas Views
- 5 Glass-Line Offices
- 1 Conference Room
- Employee Kitchenette
- Move-In Ready



Greg Martin

Principal, Managing Director

(954) 903-1815

greg.martin@avisonyoung.com

Justin Cope, SIOR

Principal

(954) 903-3701

justin.cope@avisonyoung.com

Lisa Blumer, CCIM

Principal

(954) 903-3703

lisa.blumer@avisonyoung.com

**AVISON
YOUNG**