

56306 PRECISION DRIVE  
CHESTERFIELD TWP., MICHIGAN

INDUSTRIAL FOR LEASE  
15,408 Square Feet Available



**SIGNATURE  
ASSOCIATES**  
KNOW SIGNATURE | KNOW RESULTS

**NORTH BAY PARK**



## PROPERTY FEATURES

- 15,408 square feet available
- 1,800 square feet of office
- 26'-29' clear height
- (1) 12x14 grade level doors, (1) truckwell
- Zoned Industrial
- 800 amps, 480 volts power
- Seconds from I-94 freeway
- Great manufacturing building
- Very clean high-bay space with 63' clear spans, truck dock and heavy power
- Lease Rate: \$9.50/sq. ft. Gross



For more information, please contact:

**BEN WILKEMEYER**  
(248) 359 0624  
bwilkiemeyer@signatureassociates.com

**SIGNATURE ASSOCIATES**  
One Towne Square, Suite 1200  
Southfield, MI 48076  
www.signatureassociates.com

Information is subject to verification and no liability for errors or omissions is assumed. Price is subject to change and listing withdrawal.

15,408  
Square Feet  
AVAILABLE

This floor plan illustrates a large industrial facility with a total area of 252,000 square feet. The building is divided into three main sections:

- AVAILABLE Section (Yellow):** A large rectangular area measuring 126.0' by 108.0'. It features a central cross-aisle with four 29' wide lanes and two 22' wide end lanes. A 12' x 14' overhead door is located on the left side, and a truck dock is situated at the top left corner.
- LEASED Section (Top Left):** A rectangular area measuring 36.0' by 100.0'. It includes a 12' x 14' overhead door and a truck dock.
- LEASED Section (Bottom):** A large rectangular area measuring 126.0' by 144.0'. It also features a 12' x 14' overhead door.

The plan includes various dimensions for internal spaces, aisles, and exterior setbacks. A north arrow is located in the bottom left corner, and a scale bar indicates distances of 15.0' and 50.0'.

**BEN WILKIEMEYER**  
(248) 359 0624  
bwilkiemeyer@signatureassociates.com

**SIGNATURE ASSOCIATES**  
One Towne Square, Suite 1200  
Southfield, MI 48076  
[www.signatureassociates.com](http://www.signatureassociates.com)

Information is subject to verification and no liability for errors or omissions is assumed. Price is subject to change and listing withdrawal.

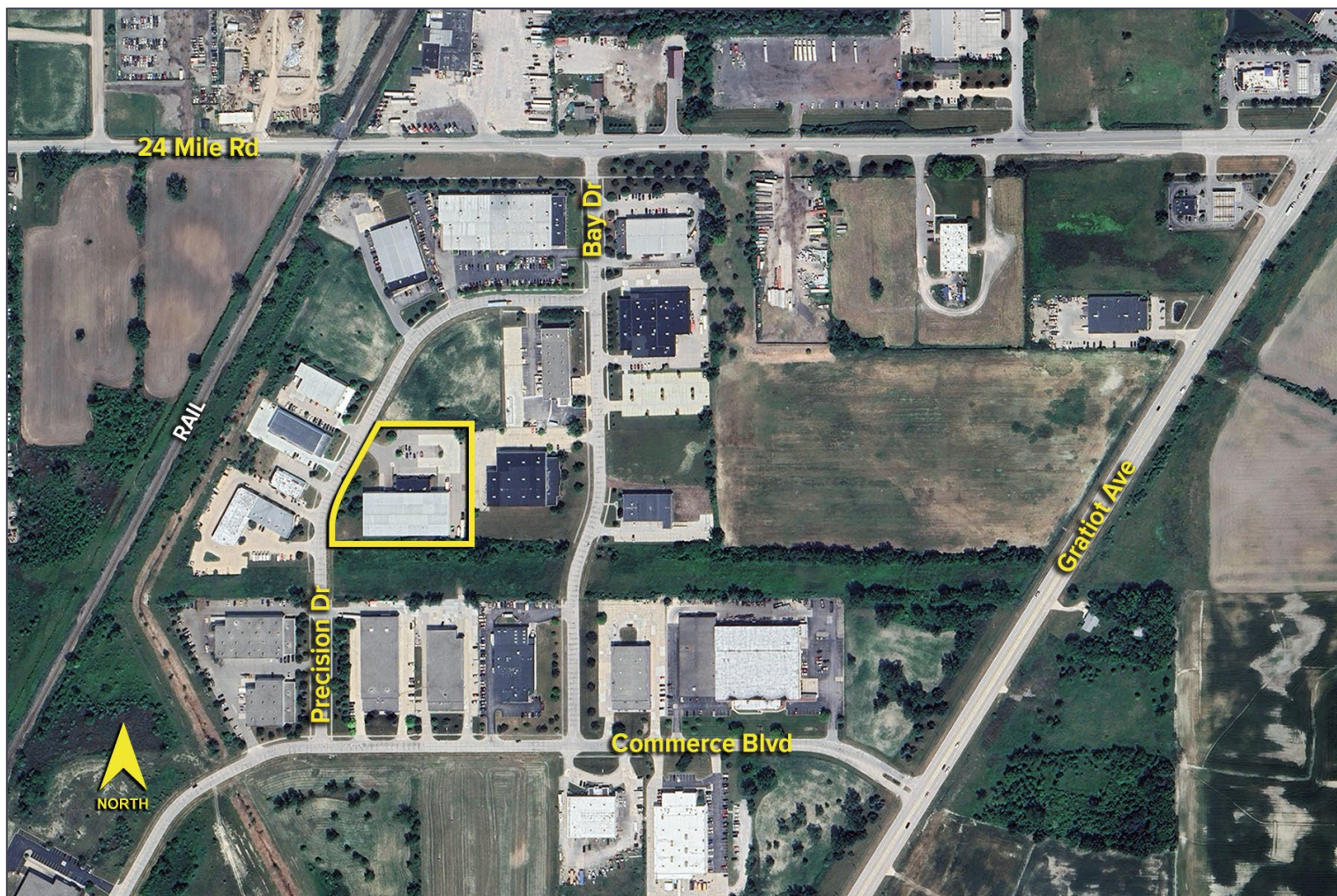


# 56306 Precision Drive – Chesterfield Twp., Michigan

## Industrial For Lease

15,408  
Square Feet  
AVAILABLE

Aerial



For more information, please contact:

**BEN WILKIEMEYER**  
(248) 359 0624  
bwilkiemeyer@signatureassociates.com

**SIGNATURE ASSOCIATES**  
One Towne Square, Suite 1200  
Southfield, MI 48076  
www.signatureassociates.com

Information is subject to verification and no liability for errors or omissions is assumed. Price is subject to change and listing withdrawal.