

4233 DELEMERE BOULEVARD
ROYAL OAK, MICHIGAN

INDUSTRIAL FOR LEASE
14,453 Square Feet Available



**SIGNATURE
ASSOCIATES**
KNOW SIGNATURE | KNOW RESULTS

FULLY RENOVATED INTERIOR & EXTERIOR



PROPERTY FEATURES

- 14,453 square feet available for sale or lease
- Industrial Showroom
- High end finishes – see photos
- Newly finished office plus two open bays of 9,000 square feet at 28' clear height & 4,000 square feet at 17' clear height
- 1,500 square foot open mezzanine, entertainment space
- (2) 14' x 16', 12' x 10' grade level doors
- 1400 amps, 120 volts
- Parking – 16 spaces max
- Lease Rate: \$14.00/sq. ft. NNN



For more information, please contact:

GRANT BRUCE
(248) 948 4188

gbruce@signatureassociates.com

JOHN DROZE
(248) 948 4191

jdroze@signatureassociates.com

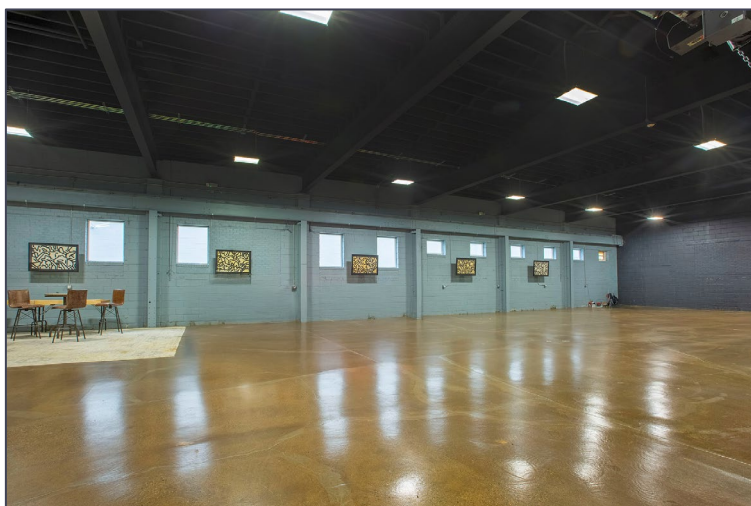
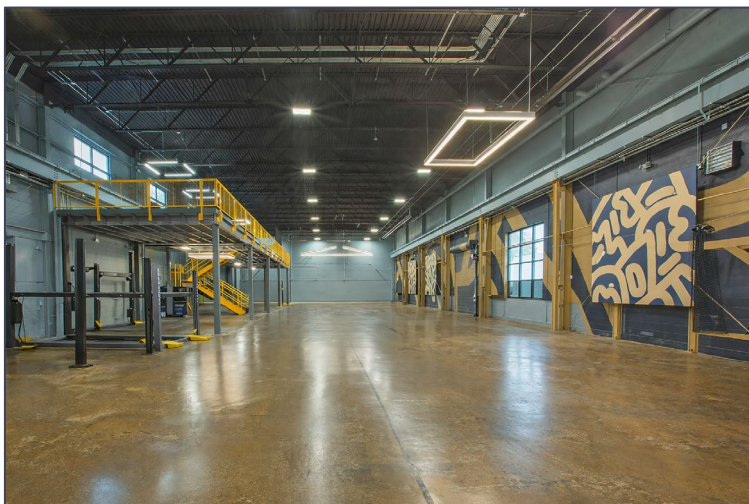
SIGNATURE ASSOCIATES
One Towne Square, Suite 1200
Southfield, MI 48076
www.signatureassociates.com

4233 Delemere Boulevard – Royal Oak, Michigan

Industrial For Lease

14,453
Square Feet
AVAILABLE

Interior Photos



For more information, please contact:

GRANT BRUCE

(248) 948 4188

gbruce@signatureassociates.com

JOHN DROZE

(248) 948 4191

jdroze@signatureassociates.com

SIGNATURE ASSOCIATES

One Towne Square, Suite 1200

Southfield, MI 48076

www.signatureassociates.com

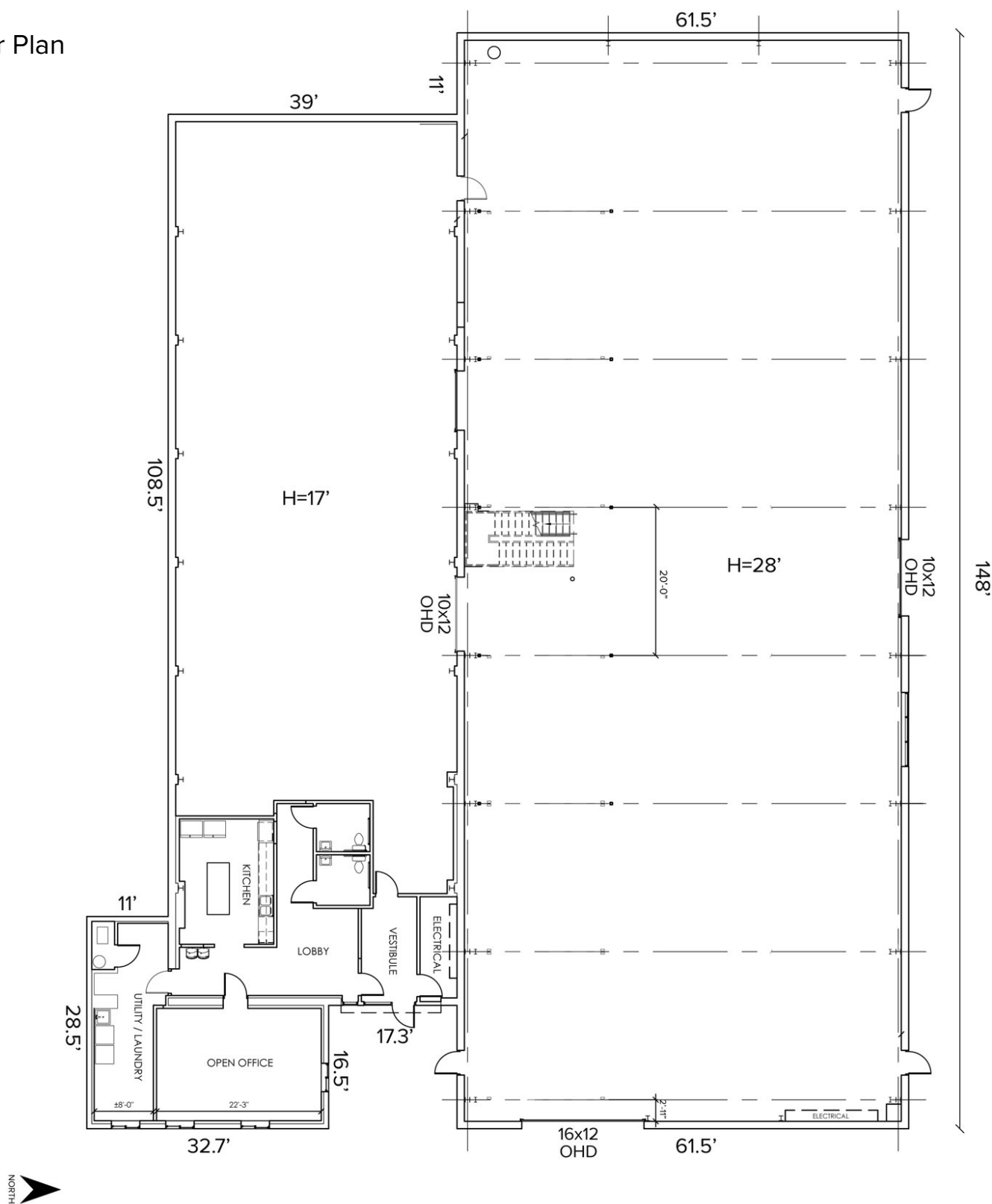
Information is subject to verification and no liability for errors or omissions is assumed. Price is subject to change and listing withdrawal.

4233 Delemere Boulevard – Royal Oak, Michigan

Industrial For Lease

14,453
Square Feet
AVAILABLE

Floor Plan



For more information, please contact:

GRANT BRUCE

(248) 948 4188

gbruce@signatureassociates.com

JOHN DROZE

(248) 948 4191

jdroze@signatureassociates.com

SIGNATURE ASSOCIATES

One Towne Square, Suite 1200

Southfield, MI 48076

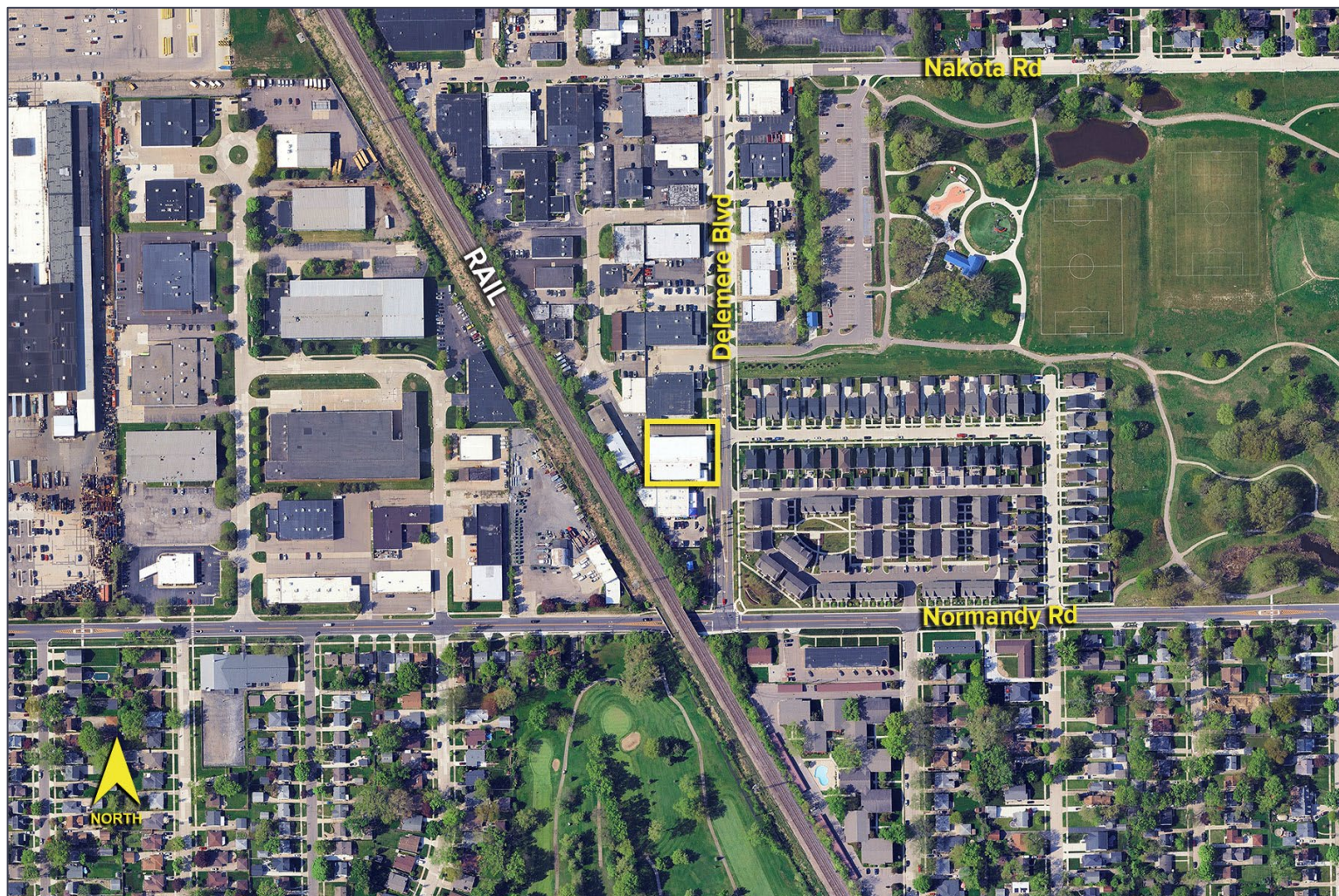
www.signatureassociates.com

4233 Delemere Boulevard – Royal Oak, Michigan

Industrial For Lease

14,453
Square Feet
AVAILABLE

Aerial



For more information, please contact:

GRANT BRUCE

(248) 948 4188

gbruce@signatureassociates.com

JOHN DROZE

(248) 948 4191

jdroze@signatureassociates.com

SIGNATURE ASSOCIATES

One Towne Square, Suite 1200

Southfield, MI 48076

www.signatureassociates.com

Information is subject to verification and no liability for errors or omissions is assumed. Price is subject to change and listing withdrawal.